

Lloyd's Register of Shipping.

SURVEYS FOR FREEBOARD.

(CONDITIONS OF ASSIGNMENT.)

Ship's Name **STEEL SINGLE SCREW TUG "EMPIRE TITAN"**

Port of Survey **HULL.**

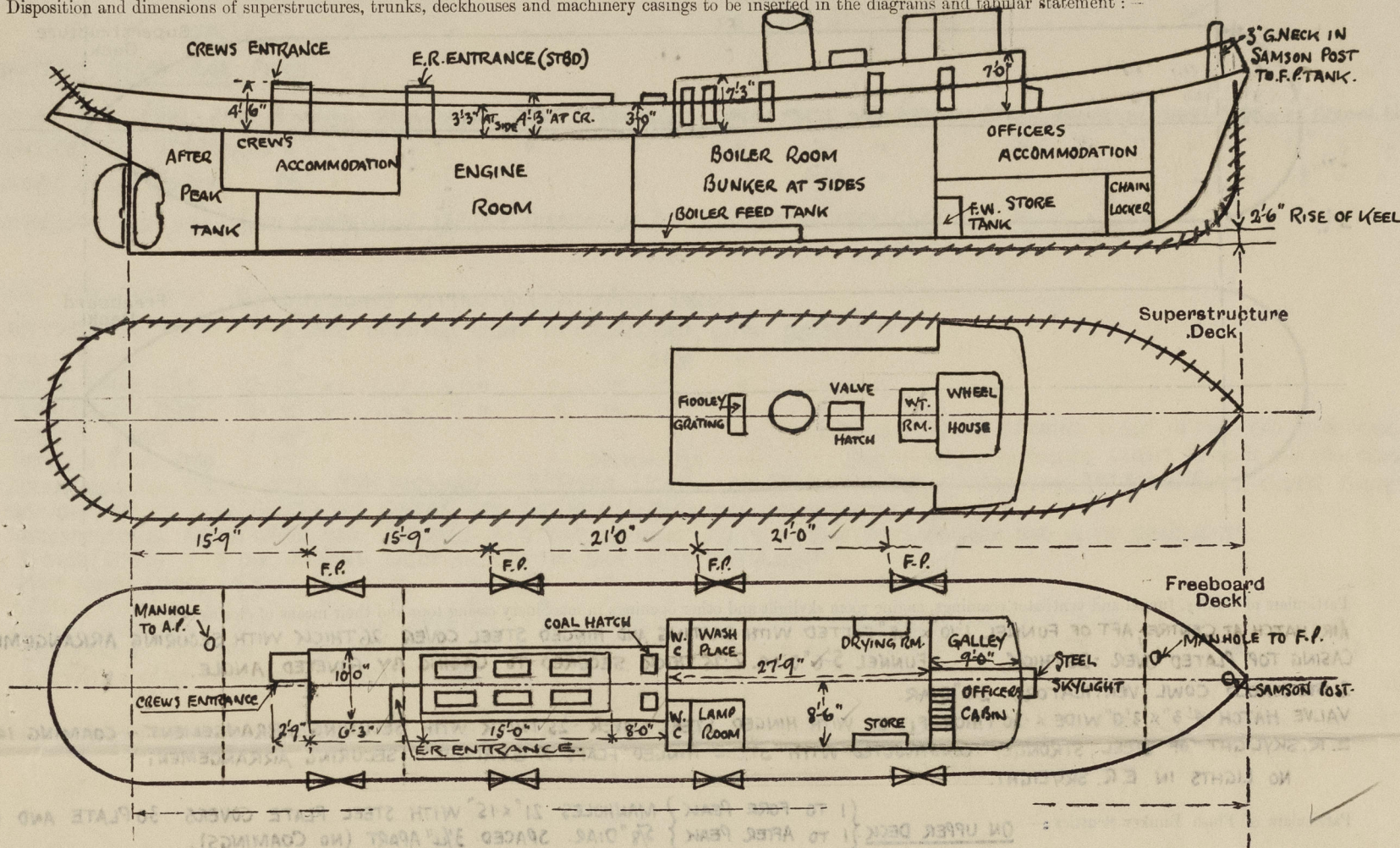
Official Number **167132**

Surveyor's Signature *J. Macleod*

Nationality and Port of Registry **BRITISH. HULL**

Date of Survey **WHILE BUILDING.**

Disposition and dimensions of superstructures, trunks, deckhouses and machinery casings to be inserted in the diagrams and tabular statement :-



Particulars of Superstructures, Trunks, Casings, Deckhouses.

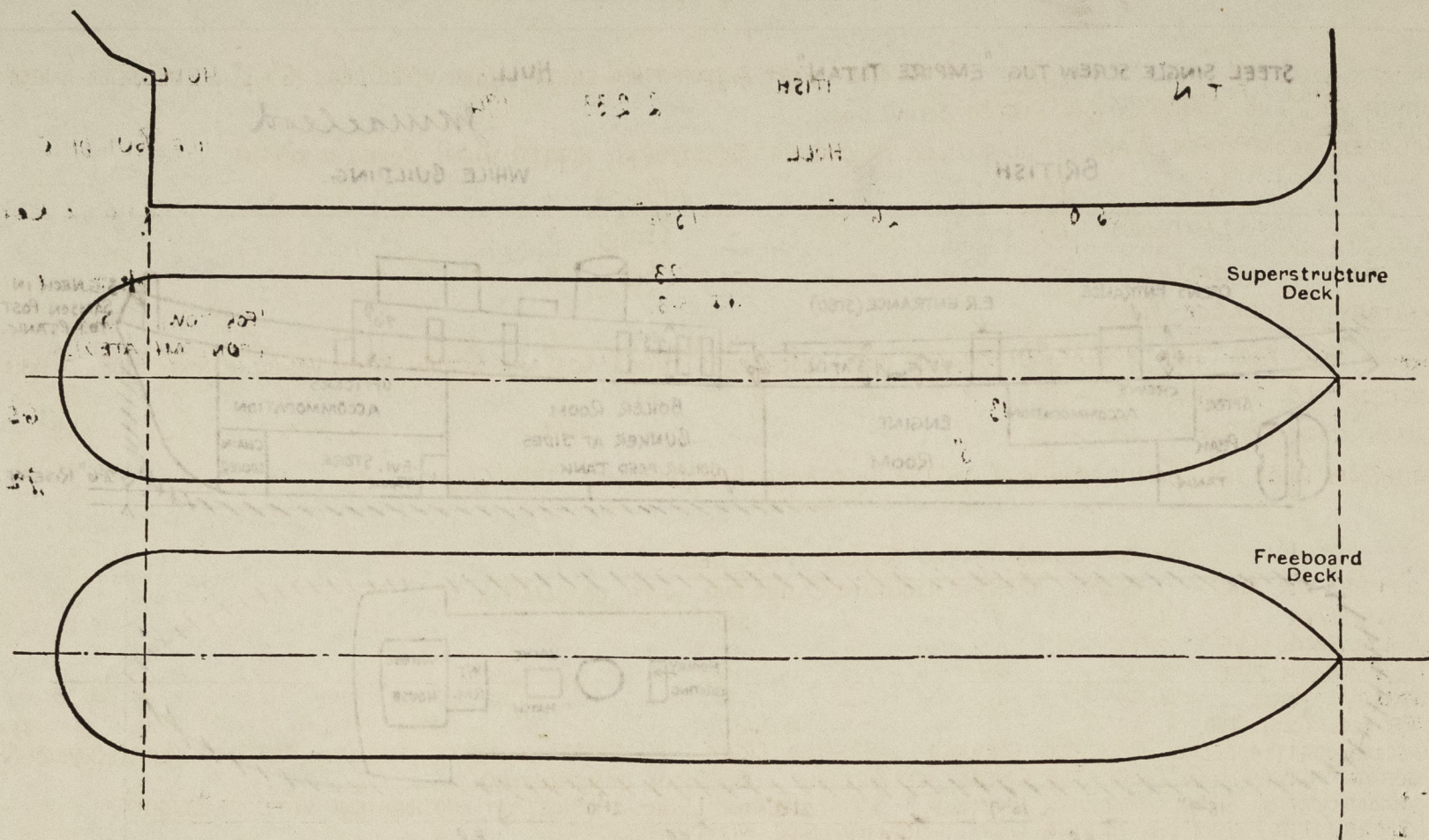
	Coaming	Plating	Stiffeners	Spacing	End Attachments of Stiffeners	Size of Openings	Height of Sills	Height of Casings
Poop Bulkhead								
Raised Quarter Deck Bulkhead								
Bridge, After Bulkhead								
Bridge, Forward Bulkhead								
Forecastle Bulkhead								
Trunk, Aft								
Trunk, Forward								
Exposed Machinery Casings on Freeboard or Raised Quarter Deck	18" x 31	26	6 x 3 3/8 B.A. IN WAY OF FUNNEL 3 x 2 1/2 x 28	23" to 28"	KNEES AT TOP	4' 11" x 23"	18"	7' 3"
Exposed Machinery Casings on Superstructure Decks								
Machinery Casings within Superstructures not fitted with Class I Closing Appliances								
Deckhouses on Flush Deck Ships	18" x 31	26	3" x 2 1/2 x 28	28"	KNEES AT TOP	4' 11" x 23"	18"	7' 0"

Particulars of Closing Appliances (state if capable of being manipulated from both sides).

Poop Bulkhead	
Raised Quarter Deck Bulkhead	
Bridge, After Bulkhead	
Bridge, Forward Bulkhead	
Forecastle Bulkhead	
Exposed Machinery Casings on Freeboard or Raised Quarter Deck	STEEL DOOR PORT SIDE TO W.C., WASH PLACE & DRYING ROOM 4' 11" x 23" " " " " " "
Exposed Machinery Casings on Superstructure Decks	STEEL DOORS STBD SIDE TO W.C. LAMP ROOM & STORE ROOM 4' 11" x 23" " " " " " "
Machinery Casings within Superstructures not fitted with Class I Closing Appliances	STEEL DOOR PORT SIDE TO GALLEY, IN HALVES 4' 11" x 23" WITH SPRING LOCK & HANDLES BOTH SIDES.
Deckhouses on Flush Deck Ships	STEEL DOOR STBD SIDE TO OFFICERS CABIN 4' 11" x 23" " " " " " "

PARTICULARS OF PROTECTION TO OPENINGS, ETC.

The following diagrams should be used to indicate the positions of cargo and coaling hatchways, gangway, cargo and coaling ports, ventilators, companionways, etc., which would affect the seaworthiness of the ship:—



Particulars of fiddley, funnel and ventilator coamings, engine room skylight and other openings in machinery casing tops and their means of closing:—

Particulars of fiddle, funnel and ventilator casings, engine room skylight and other openings in machinery casing tops and their means of closing :
 AIR HATCH AT CENTRE, AFT OF FUNNEL 1'10" x 1'8" FITTED WITH GRATING AND HINGED STEEL COVER .26 THICK WITH SECURING ARRANGEMENTS. ✓
 CASING TOP PLATED OVER .26 THICK. ✓ FUNNEL 5'6" DIAR. x .25 THICK SECURED TO CASING BY RIVETED ANGLE. ✓
 2 STOKEHOLD COWL VENTILATORS 24" DIAR.
 VALVE HATCH 4'3" x 3'0" WIDE x .30 THICK, FITTED WITH HINGED STEEL COVER .25 THICK WITH SECURING ARRANGEMENT - COAMING 14" HIGH.
 E. R. SKYLIGHT OF STEEL, STRONGLY CONSTRUCTED WITH STEEL HINGED FLAPS & QUADRANT SECURING ARRANGEMENT ✓
 NO LIGHTS IN E. R. SKYLIGHT.

Particulars of Flush Bunker Scuttles:— ON UPPER DECK { 1 TO FORE PEAK } MANHOLES 21" x 15" WITH STEEL PLATE COVERS 30 PLATE AND BOLTS.
{ 1 TO AFTER PEAK } 5/8" DIAR. SPACED 3/4" APART (NO COAMINGS).

ON UPPER DECK TO BUNKER. / PORT } WOOLLONS N°2 PATENT SCUTTLES 21" DIAR. SCREW JOINTED.
/ STBD } AND: FITTED WITH CHAIN ATTACHMENT. ✓

Particulars of Companionways— CREWS COMPANION (STEEL) ON UPPER DECK AFT WITH DOUBLE STEEL DOORS 26 THICK - SILL 15" - HAVING SPRING LOCK AND HANDLES BOTH SIDES.

OFFICERS ENTRANCE BY STEEL DOOR (STBD SIDE) DECKHOUSE FORWARD. - SILL 18" HIGH. ✓
E. R. ENTRANCE ON STBD. SIDE E. R. SKY LIGHT HAVING DOUBLE STEEL DOORS 30" THICK WITH SPRING LOCK & HANDLES BOTH SIDES - SILL 15"

Particulars of Ventilators in exposed positions on freeboard and superstructure decks :—

Particulars of Ventilators in exposed positions on freeboard and superstructure decks. —

1 COWL VENTILATOR 8" DIAM. ON PORT & STARBOARD SIDES OF CREWS COMPANION - COMPANION 3-1" HIGH X 30 THICK. PROTECTED BY E.R. SKYLIGHT.

1 " " 8" " ON TOP OF SKYLIGHT FORWARD (TO SALOON) 1'-8" HIGH ABOVE SKYLIGHT TOP X 30 - SKYLIGHT 2'-0" ABOVE DECK.

FRENCH HEAD VENTILATOR " " 9" DIAM X 5/16 THICK.

TO CAPTAIN & CHIEF ENGINEER - 1 GOOSENECK (P. & S.) 1'-8" TO MOUTH PROTECTED BY STEEL BULWARK.

TO ENGINE ROOM - 1-8" DIAM. COWL VENT AT PORT & STARBOARD SIDES OF CASING ON UPPER DECK - COAMING 2'-10" HIGH X 30 THICK.

" " " AT AFTER END (STARBOARD SIDE) 1-6 1/2" DIAM. FRENCH HEAD VENT. 2'-8" TO BOTTOM OF OPENING X 5/16" THICK COAMING.

TO GALLEY - 1-6" DIAM. COWL VENTILATOR 10 1/2" HIGH X 25 THICK ON BRIDGE DECK. - TO PASSAGE OUTSIDE OFFICERS CABIN 6" DIA. COWL VENT COAMING 16" X 25 ON BRIDGE DECK.

TO VVCS - 2-5" GOOSENECKS ON BRIDGE DECK 8 1/2" TO MOUTH

TO LAMP ROOM, WASH PLACE, DRYING ROOM & STORE - 4-3" DIAM. GOOSENECKS ON BRIDGE DECK 5" TO MOUTHS.

TO GALLEY AND OFFICERS CABIN - 2-5" DIAM. GOOSENECKS ON BRIDGE DECK 8" TO MOUTHS.

TO STORE BELOW UPPER DECK FORWARD - 1-2" DIAM. GOOSENECK ON PORT SIDE ON UPPER DECK - 18" TO MOUTH. PROTECTED BY STEEL BULWARK.

WOOD PLUGS CANVAS COVERS & GAUZZES HAVE BEEN SUPPLIED.

Particulars of Air Pipes in exposed positions on freeboard, raised quarter, or superstructure decks :—

TO FORE PEAK TANK 3" DIA. GOOSENECK WELDED TO SAMSON POST- PROTECTED BY BOWCHOCK. 2 1/2" HIGH. ✓
 TO AFTER PEAK TANK " " ON UPPER DECK 1 1/2" TO MOUTH PROTECTED BY STEEL BULWARK. ✓
 ON UPPER DECK FORWARD TO F.W. TANK AIR & FILLING PIPE (P+3). 2 1/2" DIA. GOOSENECK - 18" TO MOUTH. PROTECTED BY STEEL BULWARK.
 " " " " TO BOILER FEED TANK " " " " 20" " " " " " " " " " " "

WOOD PLUGS, CANVAS COVERS AND GAUZE HAVE BEEN SUPPLIED.

Particulars of Gangway Cargo and Coaling Ports:—

NONE

Particulars of Scuppers and Sanitary Discharge Pipes:— 4 SCUPPERS PORT & STBD THRO' SHELL FROM UPPER DECK 6" x 3"; STRINGER ANGLE CUT IN WAY AND COMPENSATION ^{ANGLE} FITTED BELOW DECK.

SCUPPER FROM WASH PLACE 2" DIAR. HOLE IN CASING SIDE (PORT); FITTED WITH COVER & CHAIN.

"	"	W.C ²	1 1/2"	"	"	"	"	(P. & S)	"	"	"	"	"
"	"	LAMP ROOM	1 1/2"	"	"	"	"	(STB)	"	"	"	"	"
"	"	GALLEY	2"	"	"	"	"	(PORT)	"	"	"	"	"

SANITARY DISCHARGE PIPES.

CREWS' W.C. PORT SIDE 4" DIAR. DISCHARGE PIPE, DISCHARGES THRO' M.C.I. NON-RETURN STORM VALVE IN SHIP'S SIDE - 12" BELOW U.DK.

[illegible]

GALLEY SINK (PORT) $1\frac{1}{2}''$ " " " " G.M. " " " " " " " " " " " "

BATHROOM PORT SIDE, BATH & WASH BASIN 1 1/2" DIA. DISCHARGE PIPE, DISCHARGES THRO' GM. " " " " " 15" " " "

Particulars of Side Scuttles:— NO SIDELIGHTS FITTED BELOW UPPER DECK.

TO OFFICERS W.L. PORT. 1-8" DIAR. OPENING LIGHT IN CASING END, WITH DEADLIGHT.

TO WASH PLACE " 1-8" " " " " SIDE " "

TO BOILER SPACE P.&S. 2-12" " " " " " "

TO DRYING ROOM PORT. F 8" " " " " " " " " "

TO OFFICERS ROOM STBD. 1-17" " " " " DECKHOUSE " "

TO ACCOMMODATION BELOW UPPER DECK FORWARD - 8" FIXED LIGHT ON SKYLIGHT TOP, FITTED WITH 3/8" STEEL PLATE COVER BOLTED TO

SKYLIGHT TOP BY 3-5/8" BOLTS - THE COVERS ARE PORTABLE & STRONGLY CONSTRUCTED. ✓

TO ACCOMMODATION BELOW UPPER DECK FORWARD- 3- 8" DIAR. OPENING LIGHTS IN SIDE (PORT) AND FORE END WITH DEADLIGHTS.
TO STOW (STBD) 1- 8" DIA OPENING LIGHT IN CASING SIDE WITH DEADLIGHT.

* LAMP ROOM (STBD) 1-8 DIA. " " " " " "

To CREW'S W.C. (") 1-8" " " " " " " " "

IN CREWS COMPANION AFT. - 1-8 DIA. OPENING LIGHT ON PORT SIDE, WITH DEADLIGHT, AND 1-8 FIXED LIGHT ON TOP OF
3 COMPANION, FITTED WITH 3/8" STEEL PLATE COVER, BOLTED TO TOP OF COMPANION BY 3-5/8" DIA. BOLTS - THE COVER IS
PORTABLE AND STRONGLY CONSTRUCTED.

Vertical distance of Sill of lowest Side Scuttle above top of keel

Particulars of Guard Rails :—

STEEL BULWARK ALL FORE AND AFT 3'-0" HIGH STRONGLY CONSTRUCTED

Particulars of Gangways, Lifelines, etc. :—


NONE

Particulars of Freeing Arrangements.						
	Length of Bulwark	Height of Bulwark	Size of Freeing Ports	Number each side	Area each side	Rule area each side
After Well	105' 0"	3' 0"	5' 2 1/2" x 6"	4	10 x 42 sq ft.	14 7 for 7L
Forward Well	✓	✓	✓	✓	✓	✓

State position of each freeing port { After Well :— FOR POSITION SEE SKETCH ON PAGE 1.
(F. and A. position and height above deck edge) { Forward Well :— 7 1/2" ABOVE DECK

State whether the freeing ports are fitted with shutters, bars, or rails, and give particulars of such :— No.

Additional area where sheer is less than standard. ✓



© 2021
Lloyd's Re
Foundati

PARTICULARS OF PROTECTION TO OPENINGS, ETC.

HATCHWAYS ON FREEBOARD AND SUPERSTRUCTURE DECKS.									
Description of Hatchway		2 COAL HATCHES (TRUNK TOP). (3'0" ABOVE UPPER DECK)			HATCH TO STORE AFT.				
Dimensions of Hatchway		5'9" x 5'6"			2'6" x 2'6"				
COAMINGS	Height above Deck	6"			18"				
	Thicknes	6" x 3" x 20 B.A.			9/16"				
	Sides	✓			✓				
	Ends	✓			✓				
HATCH BEAMS	Stiffeners	✓			✓				
	Brackets, Stays	✓			✓				
	Number	(22)			1/2"				
	Spacing	(22)			1/2"				
FORE AND AFTERS	Scantling and Sketch	NONE.			NONE				
	Bearing Surface	PINE			PINE				
	Number	2 1/2"			2 1/2"				
	Spacing	F. & A.			THWART SHIPS				
HATCH COVERS	How fitted	3"			3"				
	Bearing Surface	PINE			PINE				
	Material	PINE			PINE				
	Thickness	2 1/2"			2 1/2"				
Spacing of Cleats		24"			24"				
Number of Tarpaulins		2			2				
*Are wood fore and afters steel shod at all bearing surfaces? <input checked="" type="checkbox"/> Yes.									
Are battens and wedges efficient and in good condition? <input checked="" type="checkbox"/> Yes.									
Are tarpaulins in good condition and in accordance with rule requirements? <input checked="" type="checkbox"/> Yes.									
Are lashings provided in accordance with rule requirements? <input checked="" type="checkbox"/> Yes.									

Particulars of any special features:—

Endorsement at first survey and at surveys for renewal of Certificate:—

The fittings and appliances are in accordance with the particulars shown on this form (or as now modified) and are in good condition.



© 2021

Lloyd's Register
Foundation