

Lloyd's Register of Shipping.  
SURVEYS FOR FREEBOARD.  
(CONDITIONS OF ASSIGNMENT.)

20 AUG 1942

1752

Ship's Name NOT YET KNOWN.

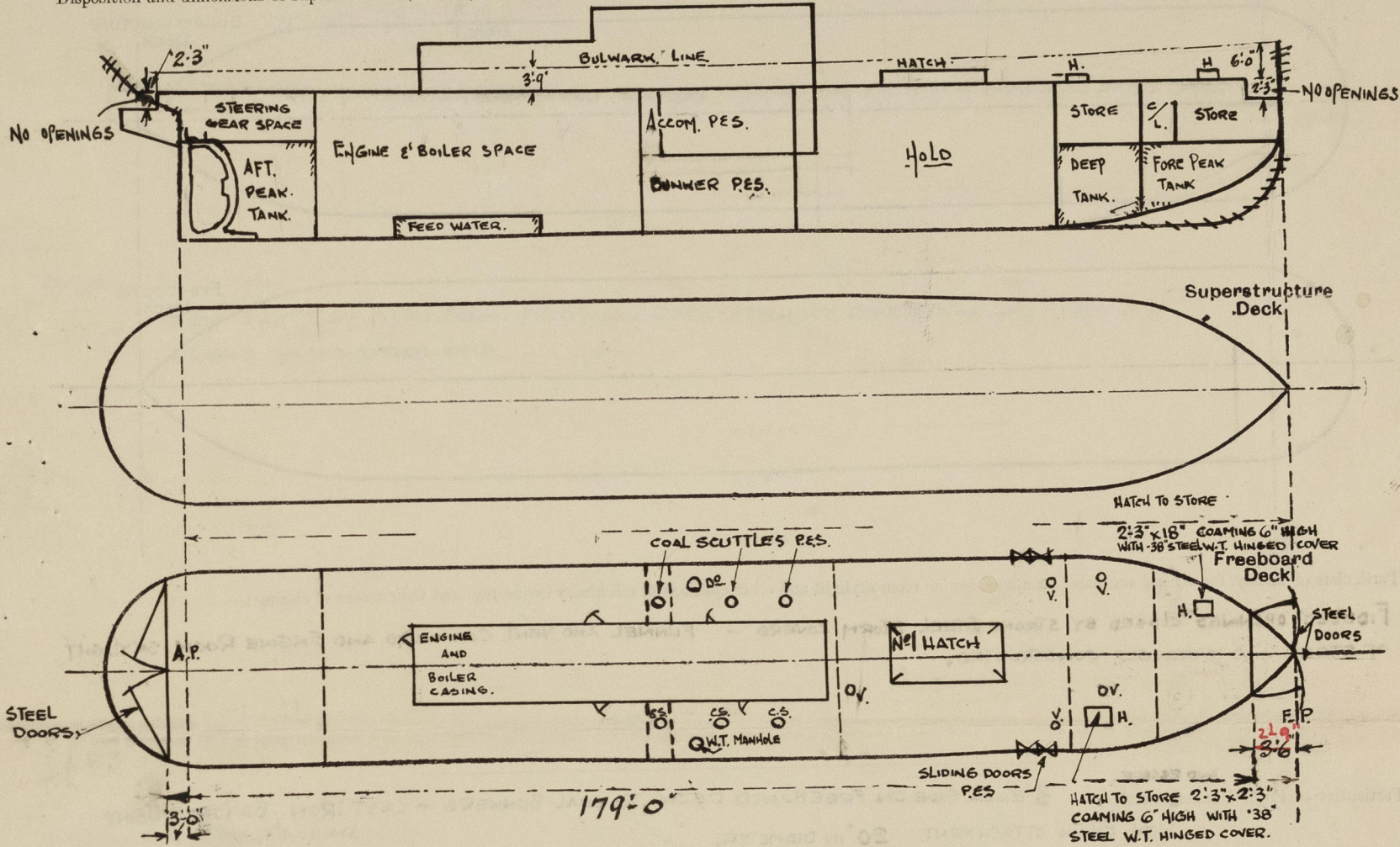
Port of Survey NEWCASTLE-ON-TYNE.

Official Number

Surveyor's Signature H. Little

Nationality and Port of Registry BRITISH. - PORT OF REGISTRY NOT YET KNOWN. Date of Survey DURING CONSTRUCTION.

Disposition and dimensions of superstructures, trunks, deckhouses and machinery casings to be inserted in the diagrams and tabular statement :-



Particulars of Superstructures, Trunks, Casings, Deckhouses.

	Coaming	Plating	Stiffeners	Spacing	End Attachments of Stiffeners	Size of Openings	Height of Sills	Height of Casings
Poop Bulkhead ... ..	—	—	—	—	—	—	—	—
Raised Quarter Deck Bulkhead ...	—	—	—	—	—	—	—	—
Bridge, After Bulkhead ... ..	—	—	—	—	—	—	—	—
Bridge, Forward Bulkhead ... ..	—	—	—	—	—	—	—	—
Forecastle Bulkhead ... ..	—	—	—	—	—	—	—	—
Trunk, Aft ... ..	—	—	—	—	—	—	—	—
Trunk, Forward ... ..	—	—	—	—	—	—	—	—
Exposed Machinery Casings on Freeboard or Raised Quarter Decks ...	34	30	6" x 3 1/2" x 44 B.A. 4" x 3" x 5/16"	22" - 33"	BRACKETED TOP	4 @ 4'10" x 2'2" 1 @ 4'10" x 2'4"	18'	7'0" AND 12'0"
Exposed Machinery Casings on Superstructure Decks ... ..	—	—	—	—	—	—	—	—
Machinery Casings within Superstructures not fitted with Class I Closing Appliances ... ..	—	—	—	—	—	—	—	—
Deckhouses on Flush Deck Ships ...	—	—	—	—	—	—	—	—

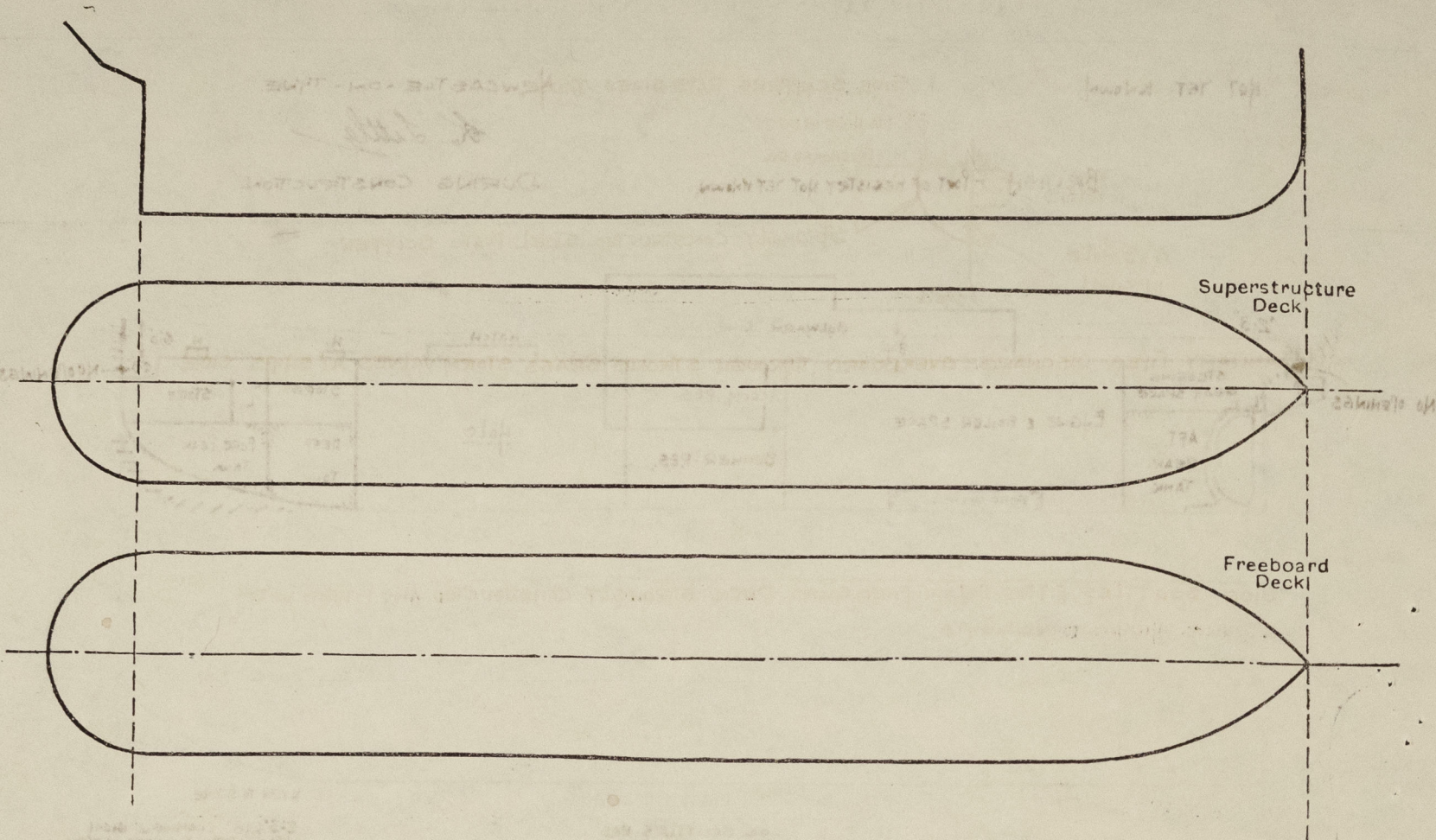
Particulars of Closing Appliances (state if capable of being manipulated from both sides).

Poop Bulkhead ... ..	—
Raised Quarter Deck Bulkhead ...	—
Bridge, After Bulkhead ... ..	—
Bridge, Forward Bulkhead ... ..	—
Forecastle Bulkhead ... ..	—
Exposed Machinery Casings on Freeboard or Raised Quarter Decks ...	HINGED STEEL DOORS CAPABLE OF BEING OPERATED FROM BOTH SIDES.
Exposed Machinery Casings on Superstructure Decks ... ..	—
Machinery Casings within Superstructures not fitted with Class I Closing Appliances ... ..	—
Deckhouses on Flush Deck Ships ...	—



### PARTICULARS OF PROTECTION TO OPENINGS, ETC.

The following diagrams should be used to indicate the positions of cargo and coaling hatchways, gangway, cargo and coaling ports, ventilators, companionways, etc., which would affect the seaworthiness of the ship :—



Particulars of fiddle, funnel and ventilator coamings, engine room skylight and other openings in machinery casing tops and their means of closing :—

FIDDLY OPENINGS CLOSED BY STRONG STEEL STORM COVERS - FUNNEL AND VENT. COAMINGS AND ENGINE ROOM SKYLIGHT OF STEEL AND STRONGLY CONSTRUCTED.

AND ESCAPE.

Particulars of Flush Bunker, Scuttles:— 3 EACH SIDE ON FREEBOARD DECK TO COAL BUNKERS + CAST IRON, BAYONET JOINT WITH CHAIN ATTACHMENT. 20" IN DIAMETER. ✓

1 W.T. ESCAPE SCUTTLE EACH SIDE ON FREEBOARD DECK TO CREWS ACCOMM. 18" x 14"  
FITTED WITH STRONG LOCKING BAR. COVER FITTED WITH CHAIN ATTACHMENT. ✓

Particulars of Companionways :—

NONE.

Particulars of Ventilators in exposed positions on freeboard and superstructure decks :—

ON FREEBOARD DECK.

2 AT 9" DIA. COAMING 36" x 32" C.V.

2 " 15" " " 54" x 36" M.R.T. SUITABLY SUPPORTED.

1 " 15" " " 36' x 36' C.V.

A NUMBER OF STRONGLY CONSTRUCTED GOOSENECK VENTS 8"x4", 36" HIGH TO OPENING ABOVE FREE BOARD DECK, FITTED UNDER BULWARKS  
ALL VENTS CLOSED BY WOOD PLUGS AND CANVAS COVERS AT SHIP'S SIDE.

Particulars of Air Pipes in exposed positions on freeboard, raised quarter, or superstructure decks :—

ON FREE BOARD DECK

2 AT 2½" DIA. TO AFT PEAK TANK. 36' HIGH TO OPENING ABOVE DW.

ALL AIR PIPES. CLOSED BY ~~WOOD PLUGS~~ <sup>WOOD PLUGS</sup> & CANVAS COVERS. ✓

4 " 2½ " " FEED TANK 36 " " " " "

2" 3" " " DEEP TANK 36" " " " " " ✓

2 " 2½ " " FORE PEAK TANK. 36 " " " " " ✓

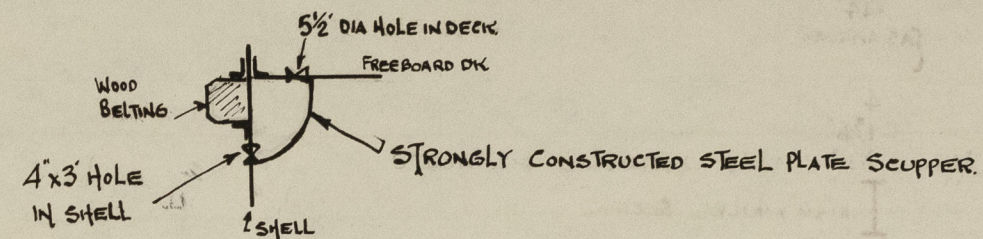
DOORS.

Particulars of Gangway ~~Cargo~~ and Coaling Ports:

AT FORE AND AFT END IN WAY OF BULWARKS } SEE ALSO SKETCH.  
AT FORE END P.E.S. IN WAY OF BULWARKS. }  
(SLIDING DOORS.) }  
ALL DOOR STRONGLY CONSTRUCTED, AND AS APPROVED ✓

ALL DOOR STRONGLY CONSTRUCTED, AND AS APPROVED.

Particulars of Scuppers and Sanitary Discharge Pipes :— SIDE SCUPPERS PE'S SIDES THUS :—



ALL SANITARY PIPES DISCHARGE OVERBOARD THROUGH STRONG BRASS STORM VALVES AT SHIPS SIDE.

Particulars of Side Scuttles :—

SIDE SCUTTLES FITTED BELOW FREE BOARD DECK STRONGLY CONSTRUCTED AND FITTED WITH STRONG HINGED DEADLIGHTS. ✓

Vertical distance of Sill of lowest Side Scuttle above top of keel.....12'-10"

Particulars of Guard Rails :—

NONE ✓

Particulars of Gangways, Lifelines, etc. :—

PROVISION MADE FOR RIGGING LIFE LINES IN ALL PARTS OF THE SHIP WHICH MIGHT HAVE TO BE USED BY THE CREW IN THE REGULAR WORKING THEREOF

Particulars of Freeing Arrangements.						
	Length of Bulwark	Height of Bulwark	Size of Freeing Ports	Number each side	Area each side	Rule area each side
After Well ... ..	176'-0" 179'-0"	3'-9" TO 6'-0" AT FORE END. (SEE SKETCH)	3'-0" x 1'-1½"	11	36 sq ft	35.2 sq ft.
Forward Well ... ..						

State position of each freeing port ... .. { After Well:— AS APPROVED - 7" ABOVE DECK. ✓  
(F. and A. position and height above deck edge) { Forward Well:—

State whether the freeing ports are fitted with shutters, bars, or rails, and give particulars of such:—

HINGED PLATE FLAPS AND 1 HORIZONTAL ROD
HINGES FITTED WITH BRASS PINS.

Additional area where sheer is less than standard.



# PARTICULARS OF PROTECTION TO OPENINGS, ETC.

HATCHWAYS ON FREEBOARD AND SUPERSTRUCTURE DECKS.									
Description of Hatchway	...	...	No 1 Hatch						
Dimensions of Hatchway	...	...	25'8" x 12'0"						
COAMINGS	{	Height above Deck	...	30"					
		Thickness	{ Sides	50"					
			{ Ends	44"					
		Stiffeners	...	AS APPROVED					
		Brackets, Stays	...						
HATCH BEAMS	{	Number	...	4					
		Spacing	...	5'1 3/8"					
		Scantling and Sketch	...						
		Bearing Surface	...	3 1/2"					
FORE AND AFTERS	{	Number	...						
		Spacing	...						
		Unsupported Lengths	...						
		Scantling* and Sketch	...	✓					
		Bearing Surface	...						
HATCH COVERS	{	Material	...	W.P.					
		Thickness	...	2 1/2"					
		How fitted	...	FEA.					
		Bearing Surface	...	3"					
Spacing of Cleats	...	...	...	21"					
Number of Tarpaulins	...	...	...	2					
<p>*Are wood fore and afters steel shod at all bearing surfaces? <input checked="" type="checkbox"/> YES</p> <p>Are battens and wedges efficient and in good condition? <input checked="" type="checkbox"/> YES</p> <p>Are tarpaulins in good condition and in accordance with rule requirements? <input checked="" type="checkbox"/> YES</p> <p>Are lashings provided in accordance with rule requirements? <input checked="" type="checkbox"/> YES</p>									

Particulars of any special features:—

DRAUGHT

OVERSHELL DISPLACEMENT AT 9'0" B.K. 1127 TONS      TONS PER INCH. 13.73

" " " 10'0 B.K. " 1297 "      " " " 14.29

DEPTH MOULDED TO STEP FORWARD AND AFTER END 12'9"

85% " " " " " " " 10'10"

MOULDED DISPLACEMENT AT 10'10" T.K. 1438 TONS.

" COEFFICIENT .649.

DEPTH OF KEEL 1/2"

Endorsement at first survey and at surveys for renewal of Certificate:—

The fittings and appliances are in accordance with the particulars shown on this form (or as now modified) and are in good condition.



© 2021

Lloyd's Register  
Foundation