

# S.S. "TUZLA". PROFILE & DECK PLAN.

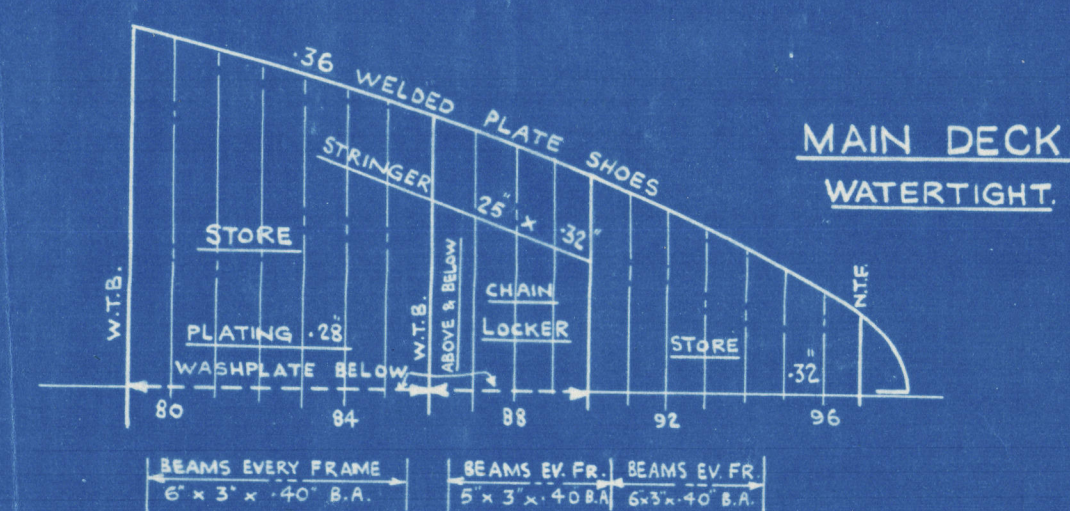
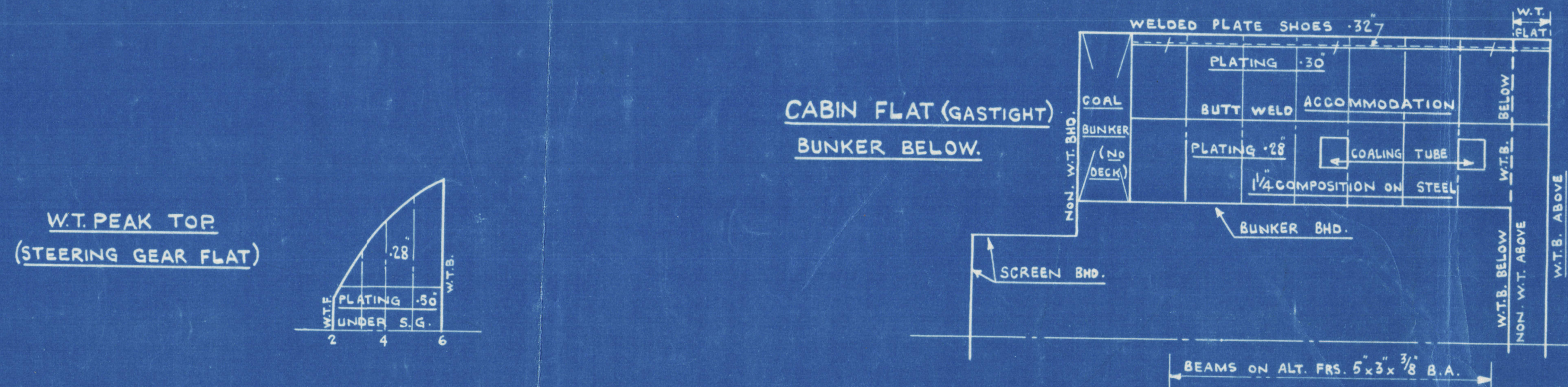
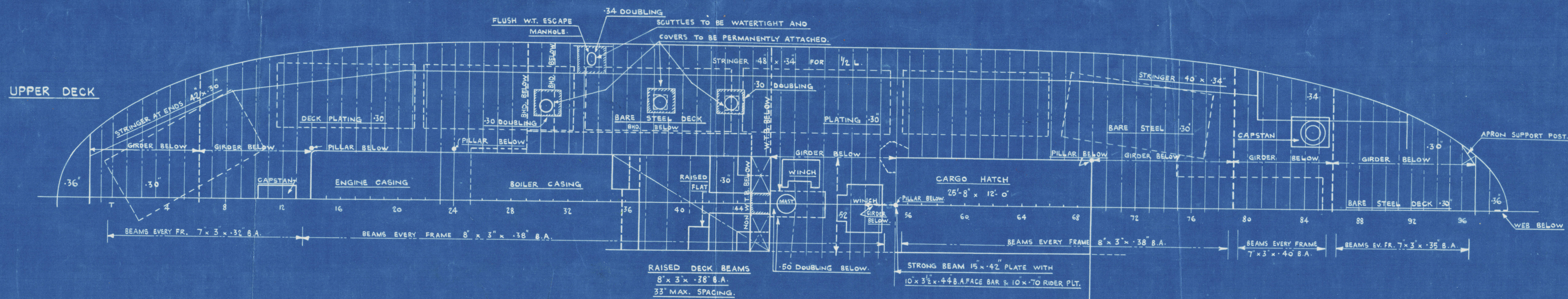
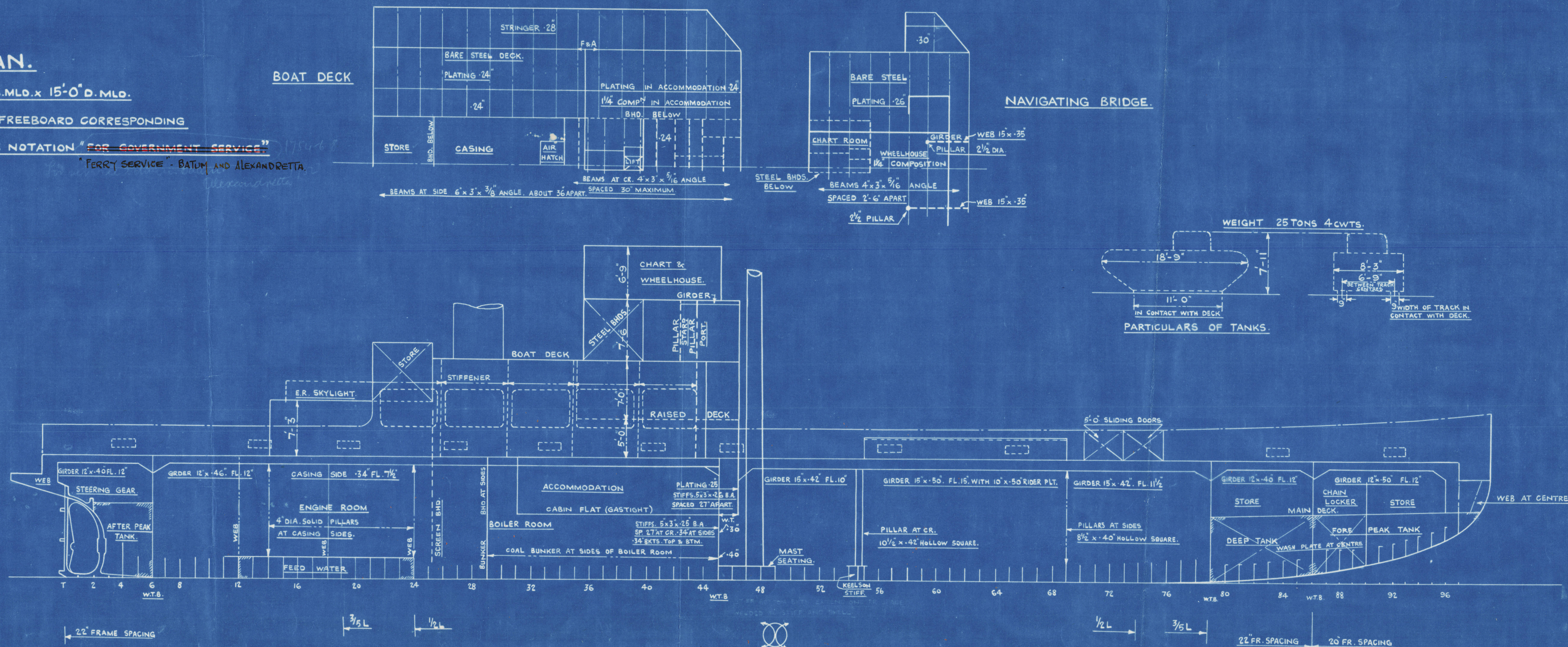
DIMENSIONS: 179'-6" P.P. x 40'-0" B.M.L.D. x 15'-0" D.M.L.D.

TO CLASS LLOYDS\*100 A.I. WITH A FREEBOARD CORRESPONDING

TO A DRAFT OF 9'-0" B.K. WITH THE NOTATION "FOR GOVERNMENT SERVICE"

SCALE 1/8" = 1'-0"

"FERRY SERVICE" - BATHY AND ALEXANDRETTA.





SWAN HUNTER & WIGHAM  
RICHARDSON LTD.

*Profile & Decks  
(as fitted)*

SS TUZLA

NEWCASTLE ON TYNE.

Report No. 100766.

008222-008230-0109



© 2021

Lloyd's Register  
Foundation