

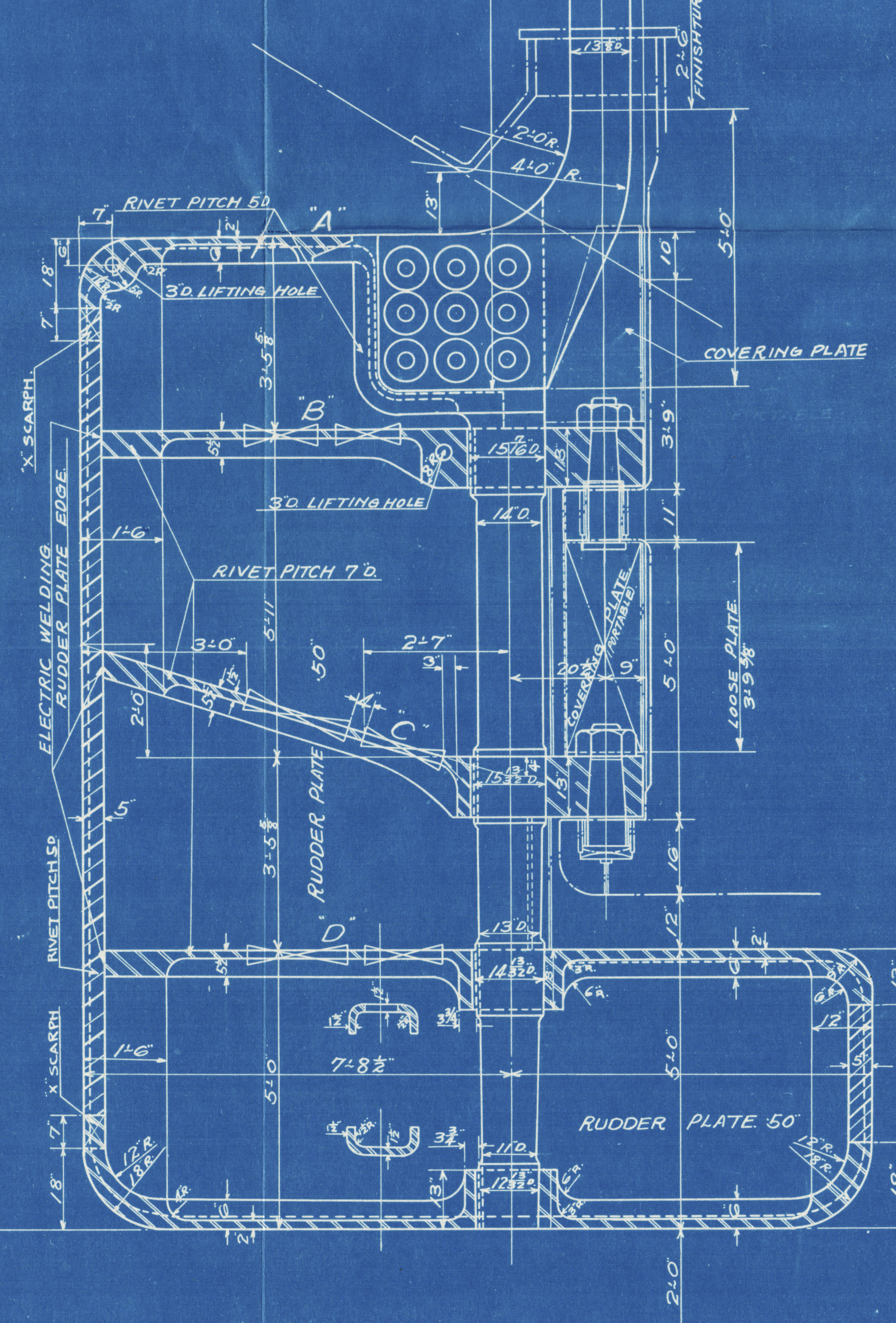
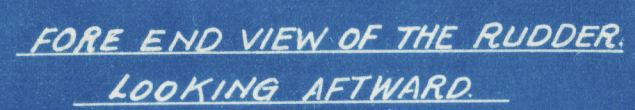
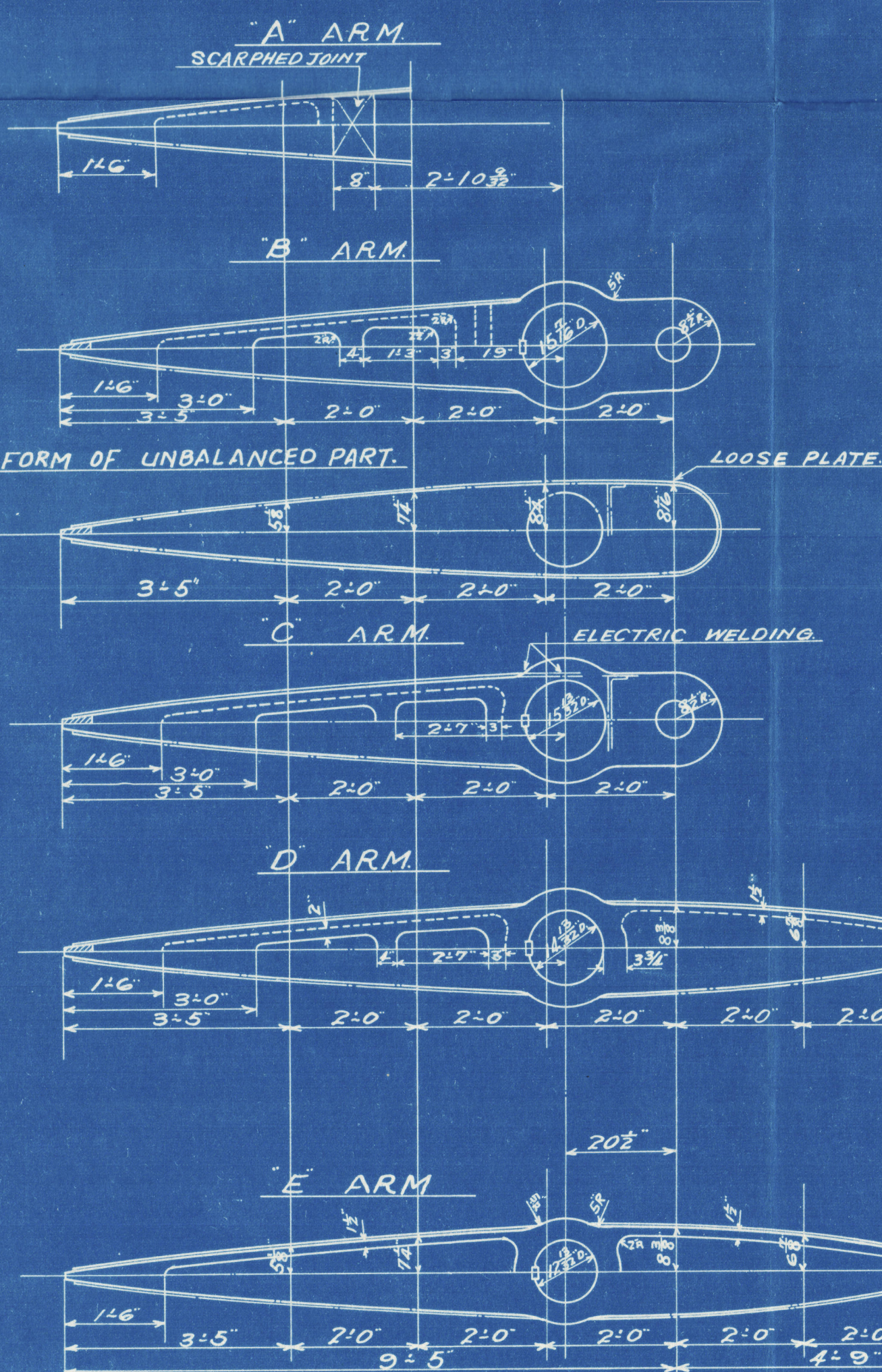
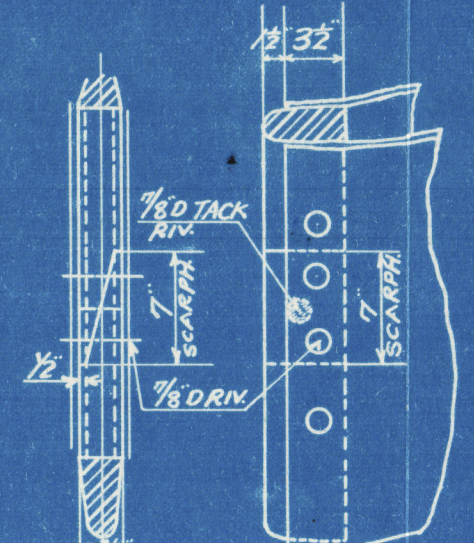
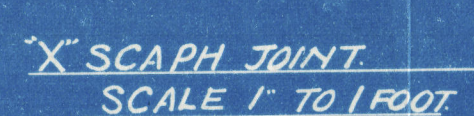
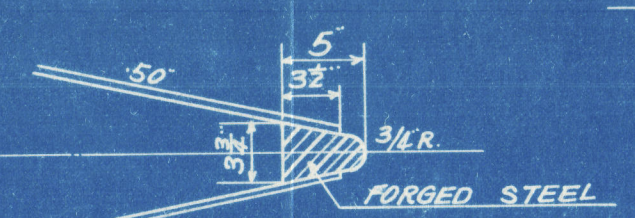
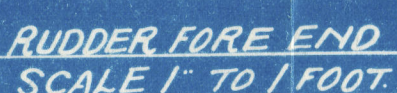
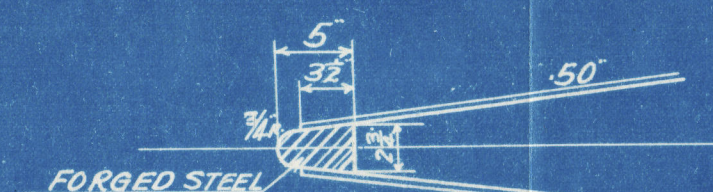
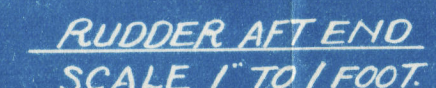
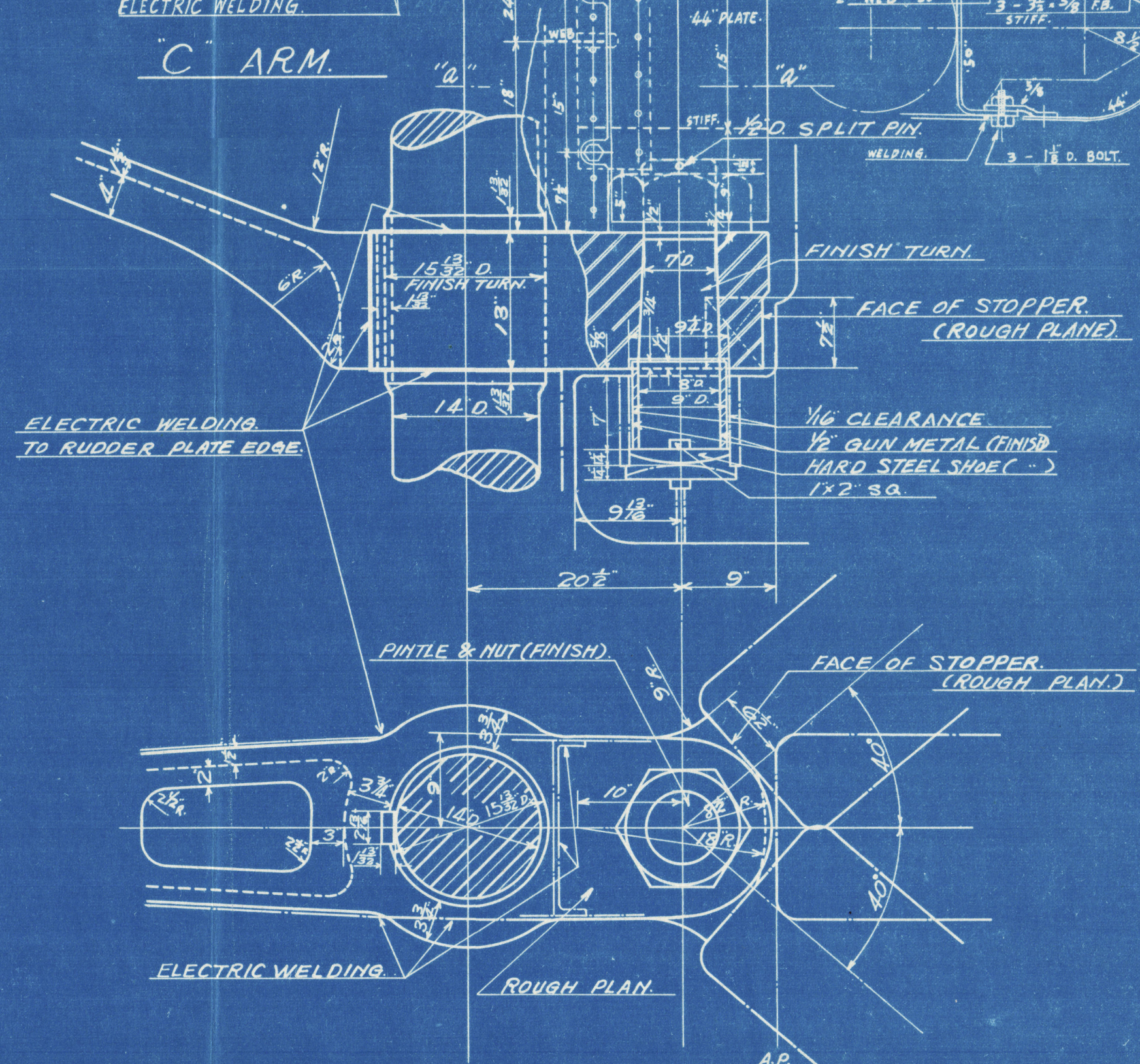
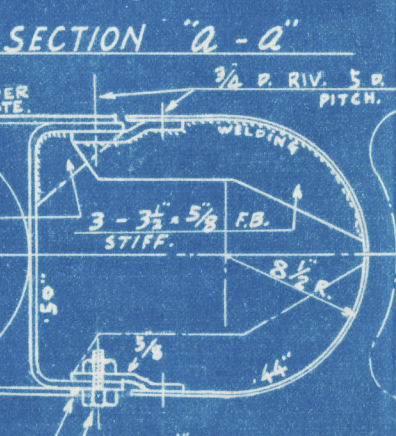
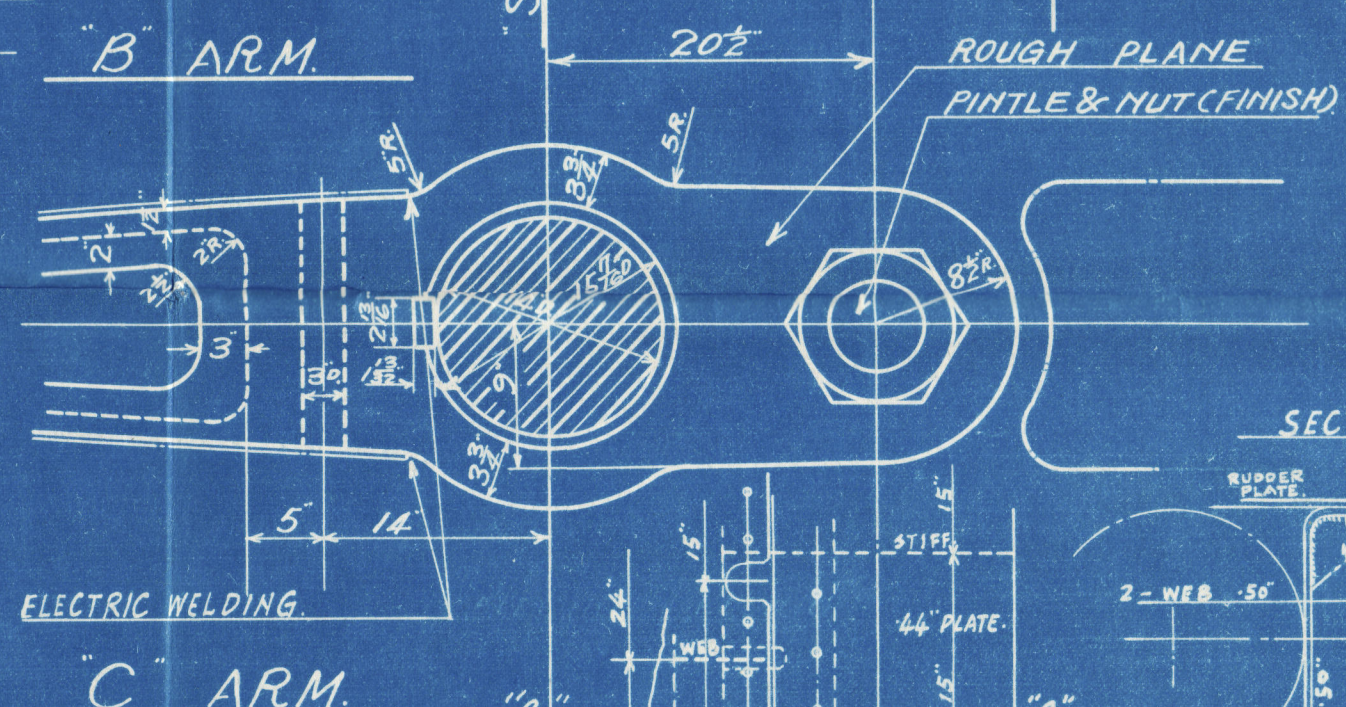
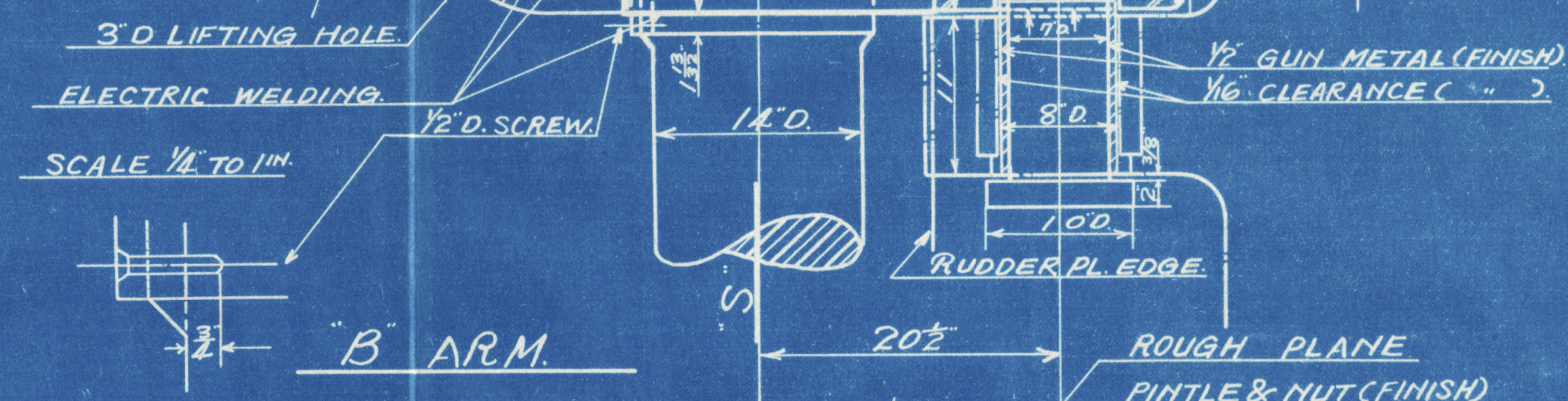
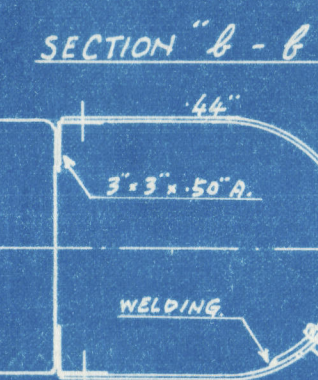
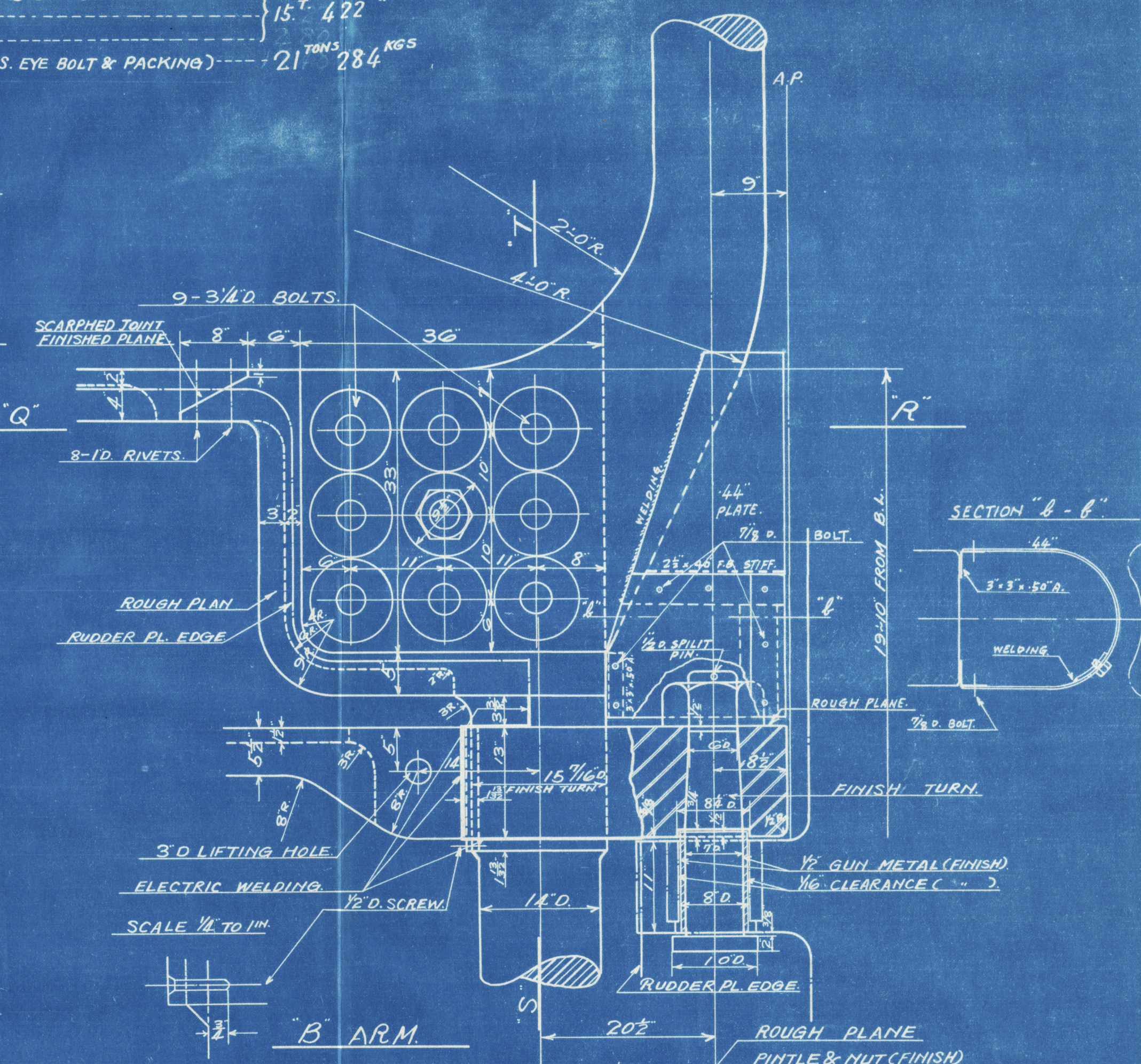
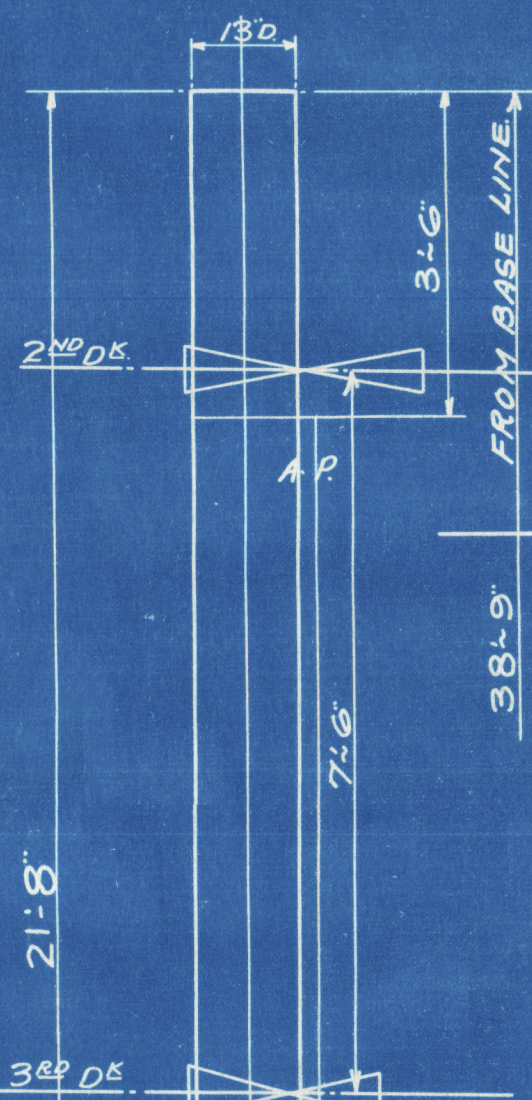
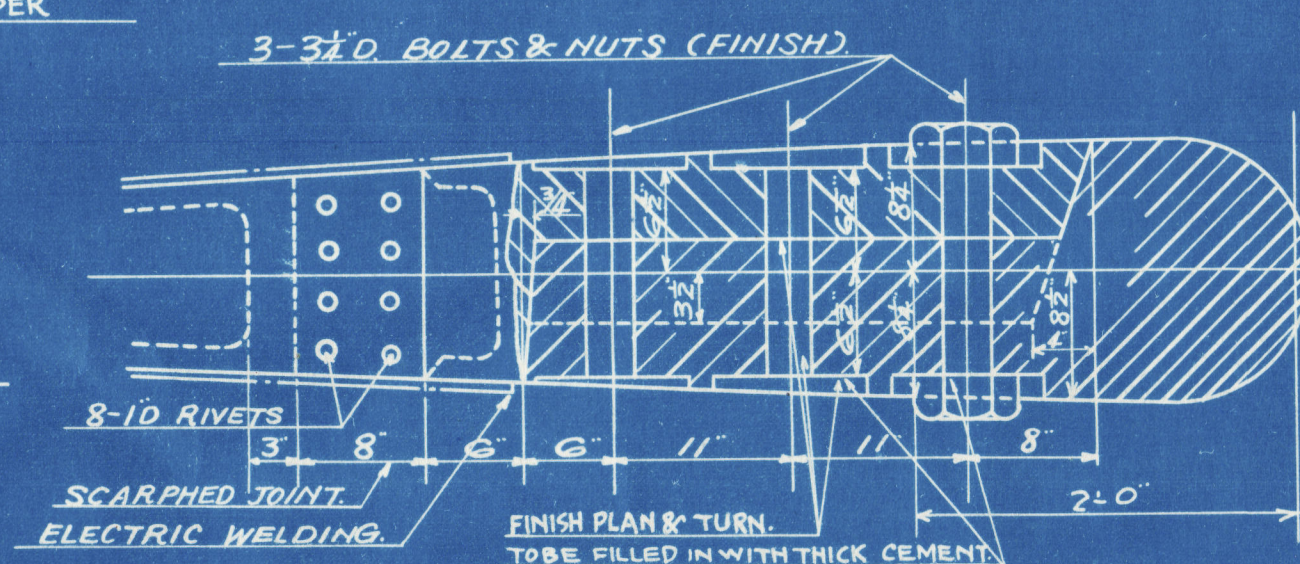
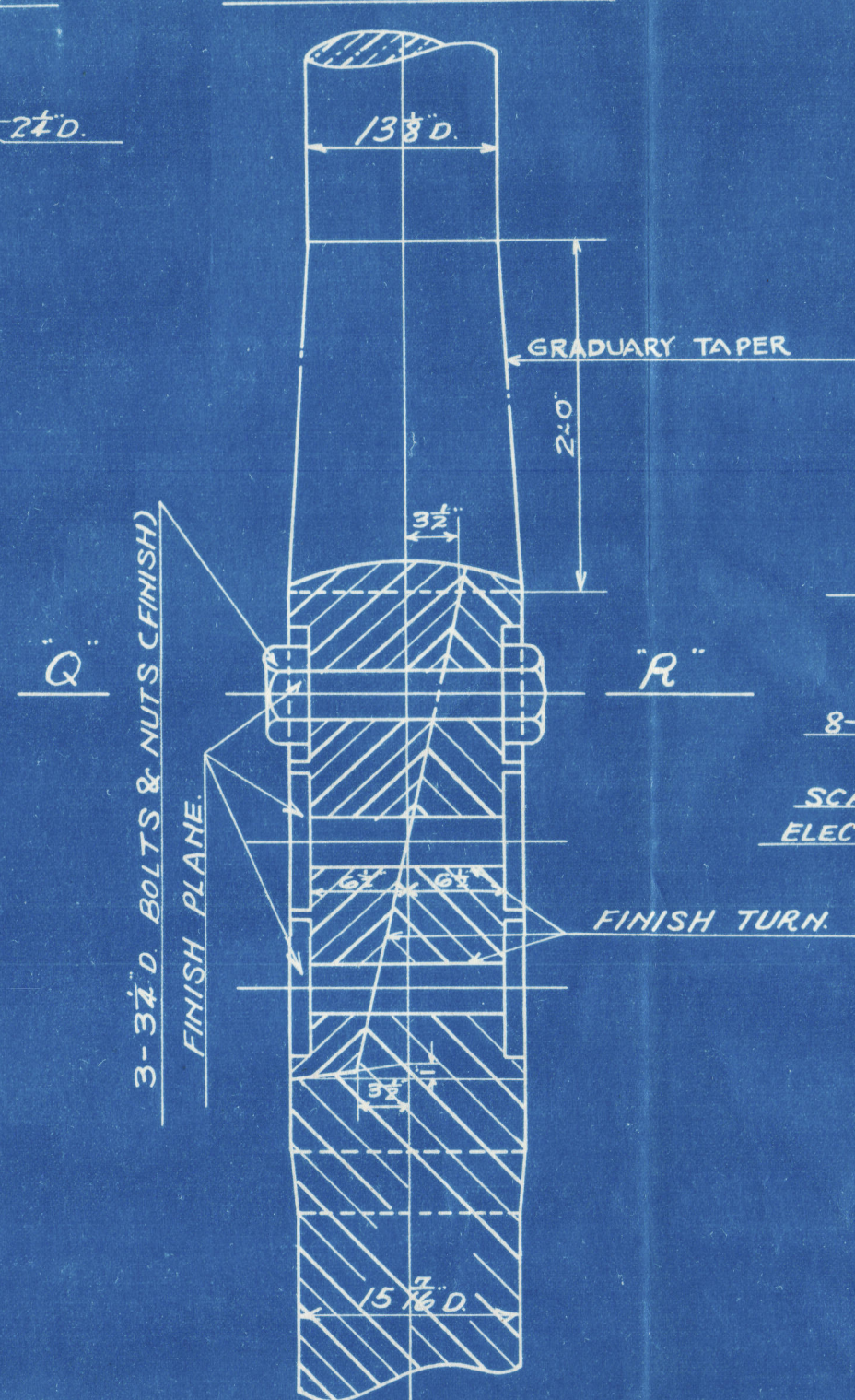
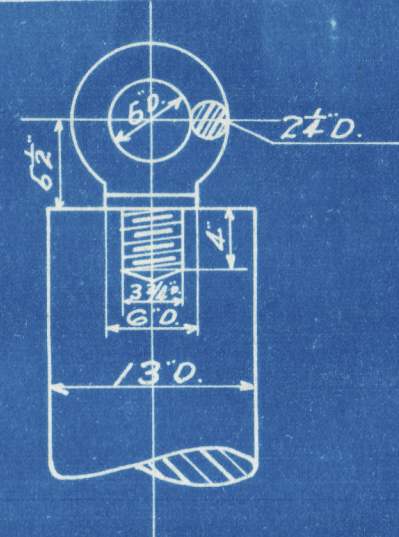
1. ALL RIVETS & TAP RIVETS TO BE  $\frac{7}{8}$  INCH DIA. EXCEPT THOSE OTHERWISE SPECIFIED.
2. INSIDE RUDDER SPACE TO BE PACKED WITH GRANULATED CORK MIXED WITH BITUMEN EXCEPT PINTLE COVERING PART, WHERE NO PACKING.
3. ALL BOLTS & NUTS TO BE WHITWORTH STANDARD SIZE.

RUDDER PARTICULARS:—	
SEA SPEED	14 $\frac{3}{4}$ KNOTS
TOTAL RUDDER AREA	185.3
RUDDER AREA EXCLUDING BALANCED PART & PINTLE COVERING LOOSE PART.	
(A)	147.18
A x D	773.50
D/A OF RUDDER HEAD	13 D.

WEIGHT:

RUDDER HEAD	5 <sup>T</sup> 878	KGS.
MAIN PIECE & ARMS (A,B,C,D,E)	15 <sup>T</sup> 422	"
PACKING		
PLATES		
TOTAL (INCL. PINTLES, BOLTS, EYE BOLT & PACKING)	21 <sup>TONS</sup> 284	KGS

**MATERIALS :**  
 RUDDER HEAD & MAIN PIECE-----FORGED STEEL  
 ARMS-----CAST STEEL  
 BOW OF THE RUDDER-----CAST OR FORGED S<sup>t</sup>  
 PINTLES, BOLTS, NUTS, & EYE BOLT--FORGED STEEL



M.V. "TOKAI MARU".  
Nagasaki Report No.1743.

HONOLULU MARU  
 RUDDER  
 SCALE 1/2 INCH TO 1 FOOT.  
 (DETAILS) 1 INCH TO 1 FOOT.  
 (445'-0" x 60'-6" x 40'-9")  
 (FINISHED PLAN)

