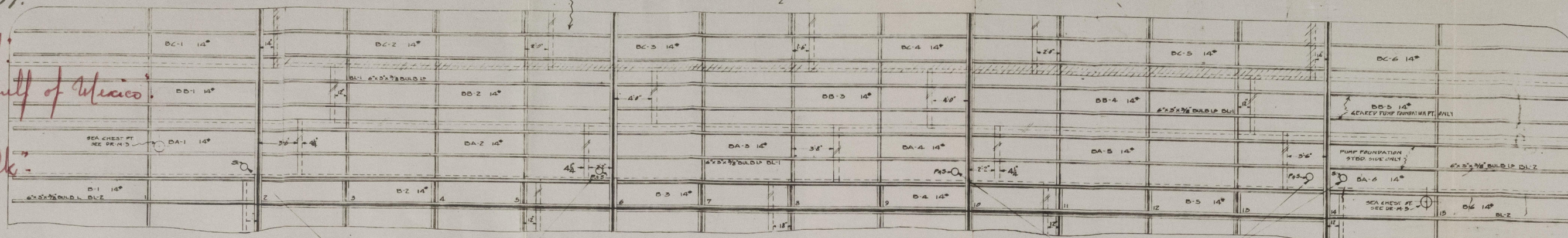


TEXACO 157 Gal. 3237.

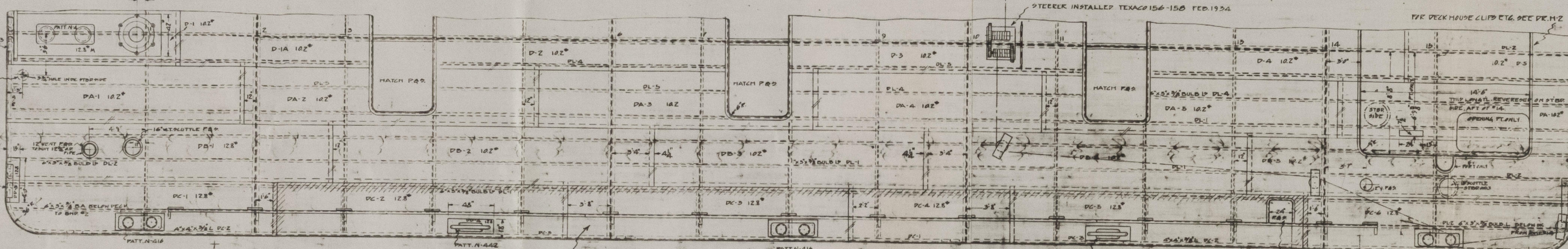
Class 'A' - Barge to be towed.
"For Coastwise Service in the Gulf of Mexico."
Longitudinal Framing
"Carrying petroleum in bulk."

THIS PLATE PLUS NEW TANKS RENEWED BY 1/2 PLATES



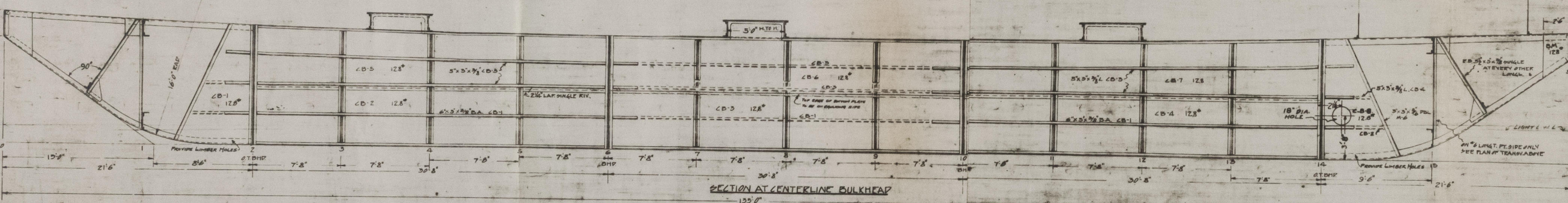
PLAN OF INNER BOTTOM

Location of Sleeper Plugs

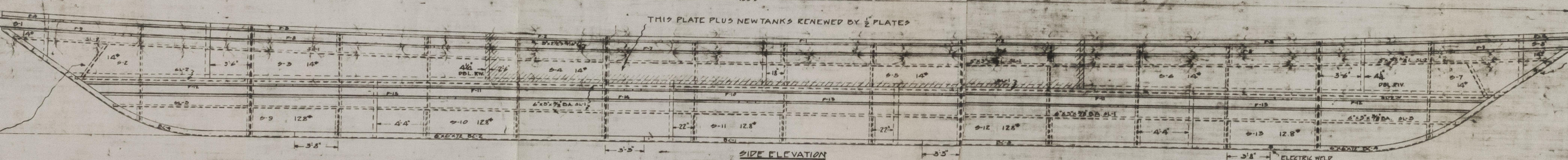


DECK PLAN

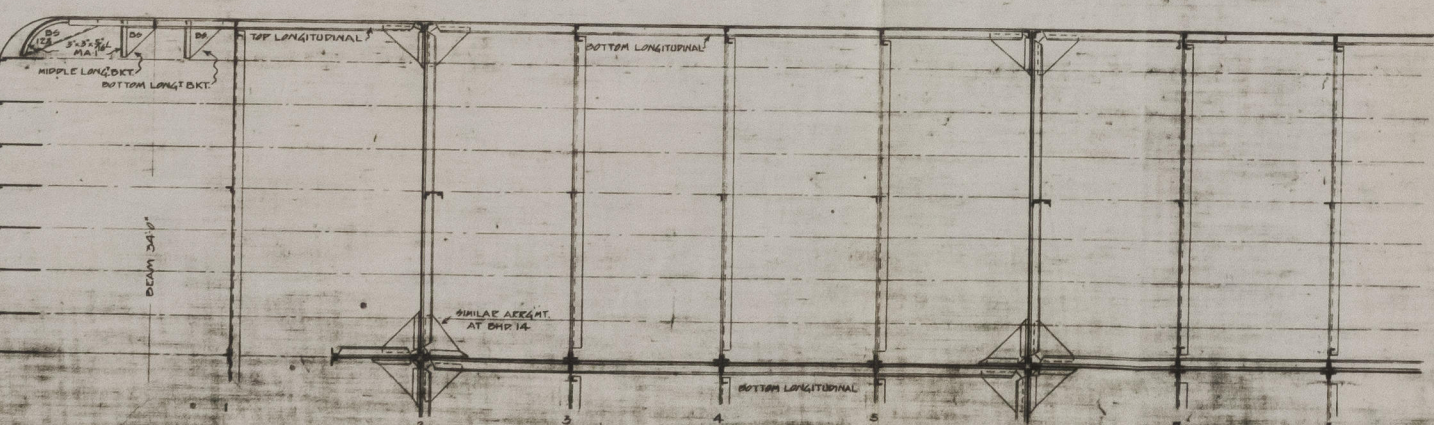
THIS PLATE PLUS NEW TANKS RENEWED BY 1/2 PLATES



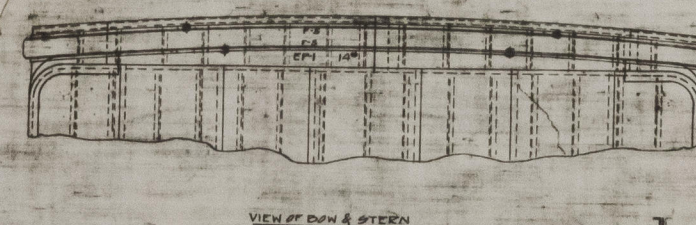
SECTION AT CENTERLINE BULKHEAD



SIDE ELEVATION

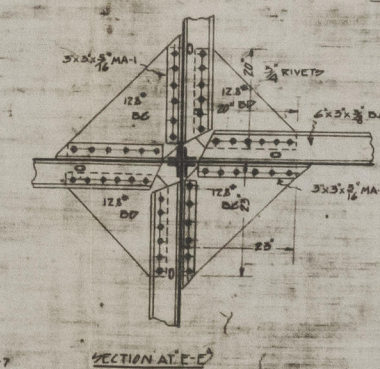


SHOULDER PLUGS AT BULKHEAD

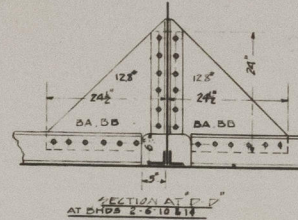


VIEW OF BOW & STERN

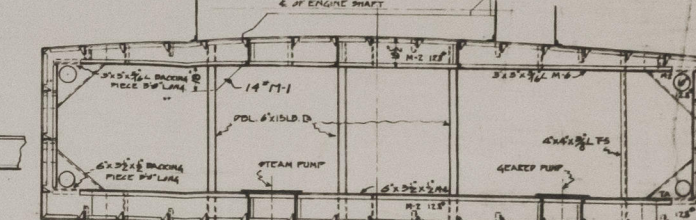
LONG SECTION THROUGH



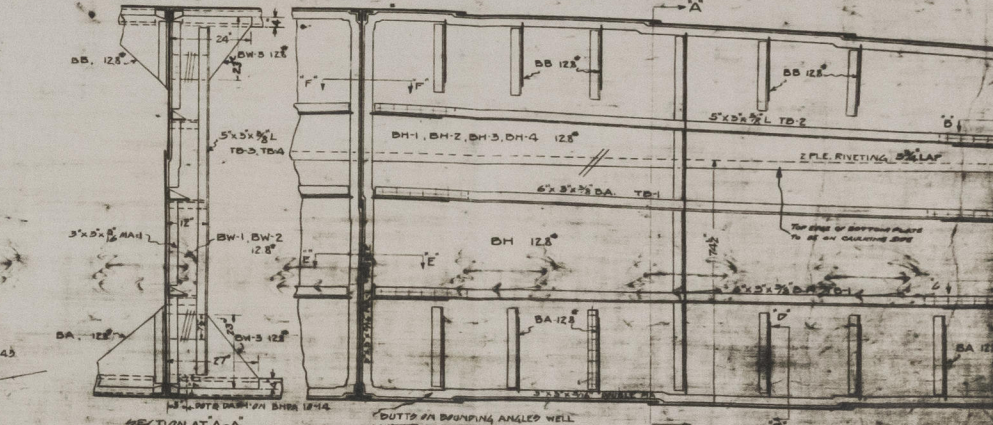
SECTION AT A-A



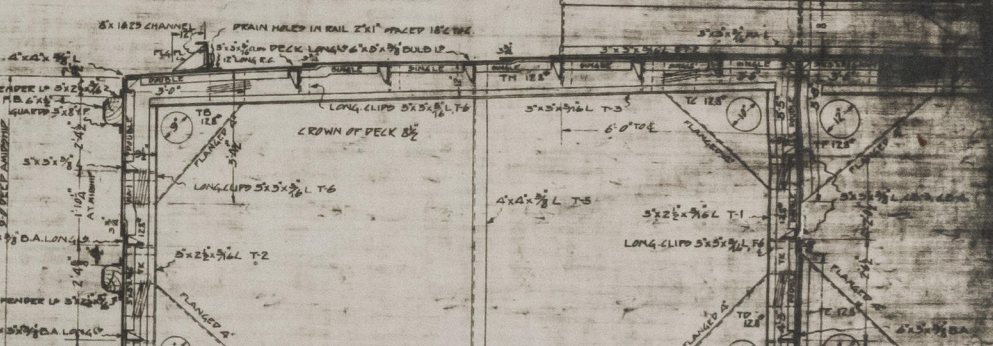
SECTION AT B-B



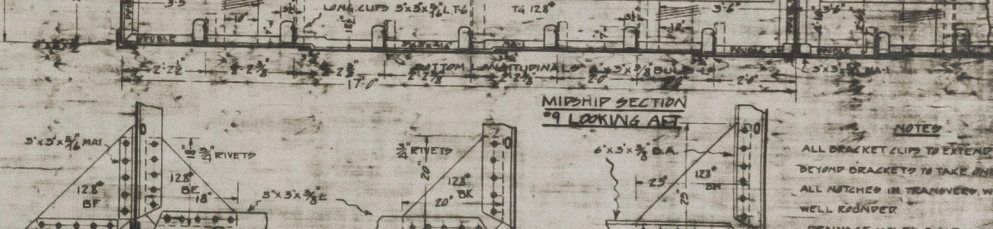
SECTION AT C-C



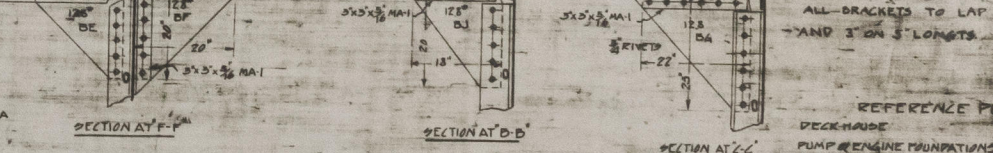
SECTION AT D-D



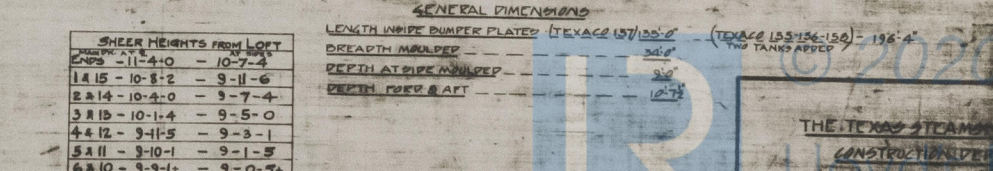
SECTION AT E-E



SECTION AT F-F



SECTION AT G-G



SECTION AT H-H

RIVETING SCHEDULE		
LOCATION	TYPE OF RIVET	SPACING OF RIVETS
END BOUNDING ANGLE TO END SHELL	3/8"	6" LONG TO C
BULKHEAD HEADS	3/8"	6" LONG TO C
STIFFENERS	3/8"	6" LONG TO C
DECK RIVETING	3/8"	6" LONG TO C
SHEER & END TANK RIVETING	3/8"	6" LONG TO C
ALL OTHER RIVETING NOTATED	3/8"	6" LONG TO C

NOTES
ALL DRACKET CUTS TO EXTEND TO CENTERLINE
BEHIND DRACKET TO TAKE ALL SHEER
ALL NOTCHED IN TRANSVERSE WELLS
WELL EXPOSED
DRAINAGE HOLES & AIR HOLES TO BE DRILLED
WALL LONGIT. & APPROX. 1/2"
ALL DRACKET TO LAP 1" ON 3" LONGT.
AND 1" ON 3" LONGT.

REFERENCE PLANS
DECKHEAD
PUMP ENGINE FOUNDATIONS
EXPANSION TANK COLLAR

GENERAL DIMENSIONS
LENGTH BARGE BULKHEAD (TOWAGE 157'-0") (TEXAS 157'-0")
DEPTH BARGE BULKHEAD (TOWAGE 157'-0") (TEXAS 157'-0")
DEPTH BARGE BULKHEAD (TOWAGE 157'-0") (TEXAS 157'-0")
DEPTH BARGE BULKHEAD (TOWAGE 157'-0") (TEXAS 157'-0")

THE TEXAS STEAMSHIP
CONSTRUCTION
LLOYD'S REGISTER
HULL & ENGINE
MIDSHIP FOUNDATION

REPAIR PLUGS OF LOWER HULLS...
TWO TANKS...
PLATING INCREASED IN THICKNESS...

APPROVED

JUL 6 1937

LLOYD'S REGISTER OF SHIPPING
NEW YORK

Superior Copy

0000-012800-102800