

140'-0" x 27'-0" x 10'-6"

7'-6" Draft

140
10.5

KINGSTON-WOLFE ISLAND FERRY

28 AUTOMOBILES
500 PASSENGERS
(CONVERTED "C" CLASS COASTER)
SCALE 1/8" = 1'-0"

14 SEP 1946

Approval by
25-9-46
F.H.

Cubic ft.

Spam container

$$40 \times 27 \times 10.5 \times .75 = 297$$

$$62 \times 7 \times 27 \times .5 = 59$$

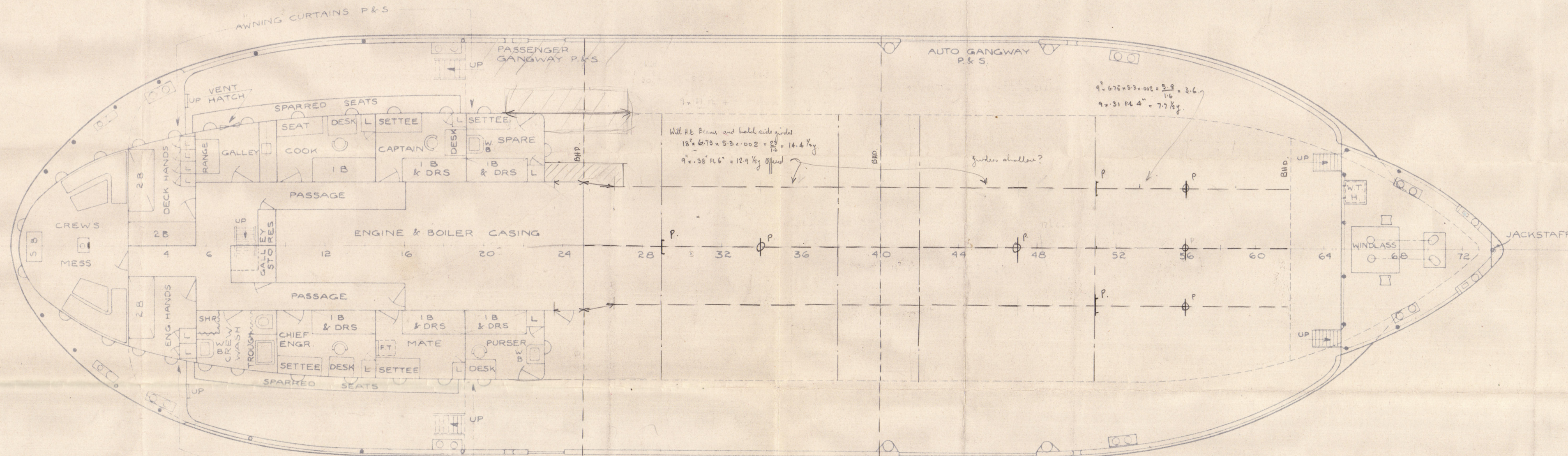
$$27 \times 27 \times 7 \times .75 = 19$$

$$297 + 59 + 19 = 375$$

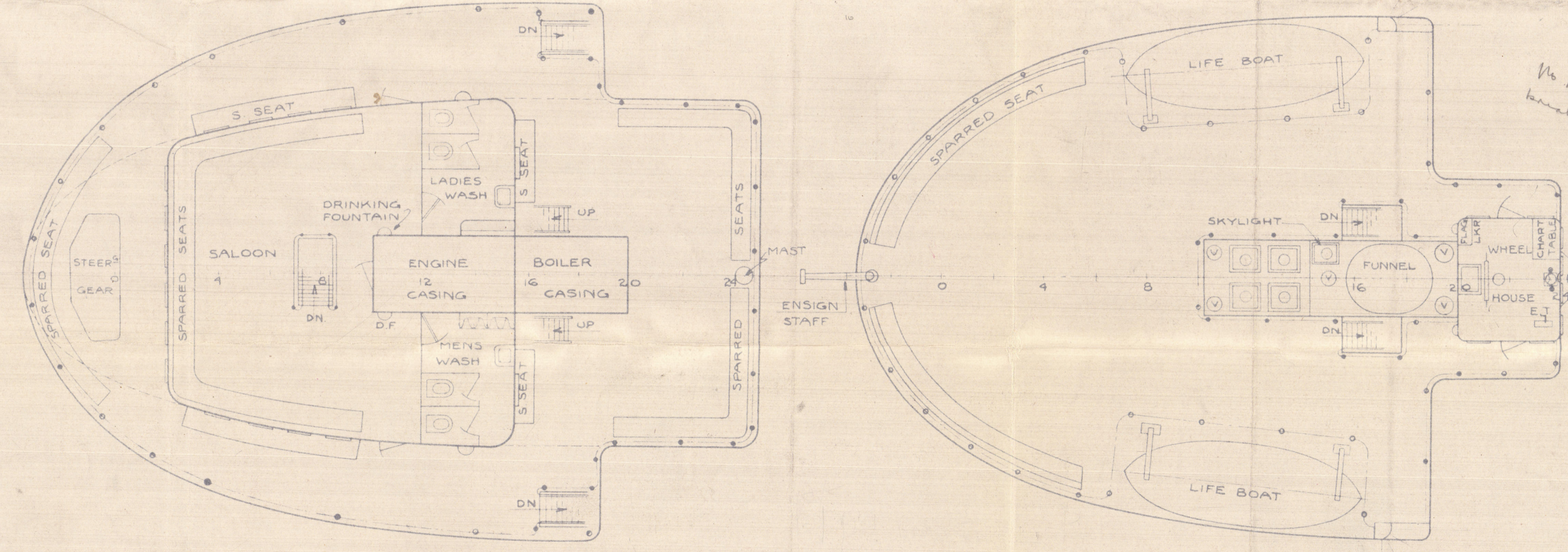
W.L. 7'-6"

OUTBOARD PROFILE

$$(104 + 35) + 8 + 5 = 152'$$

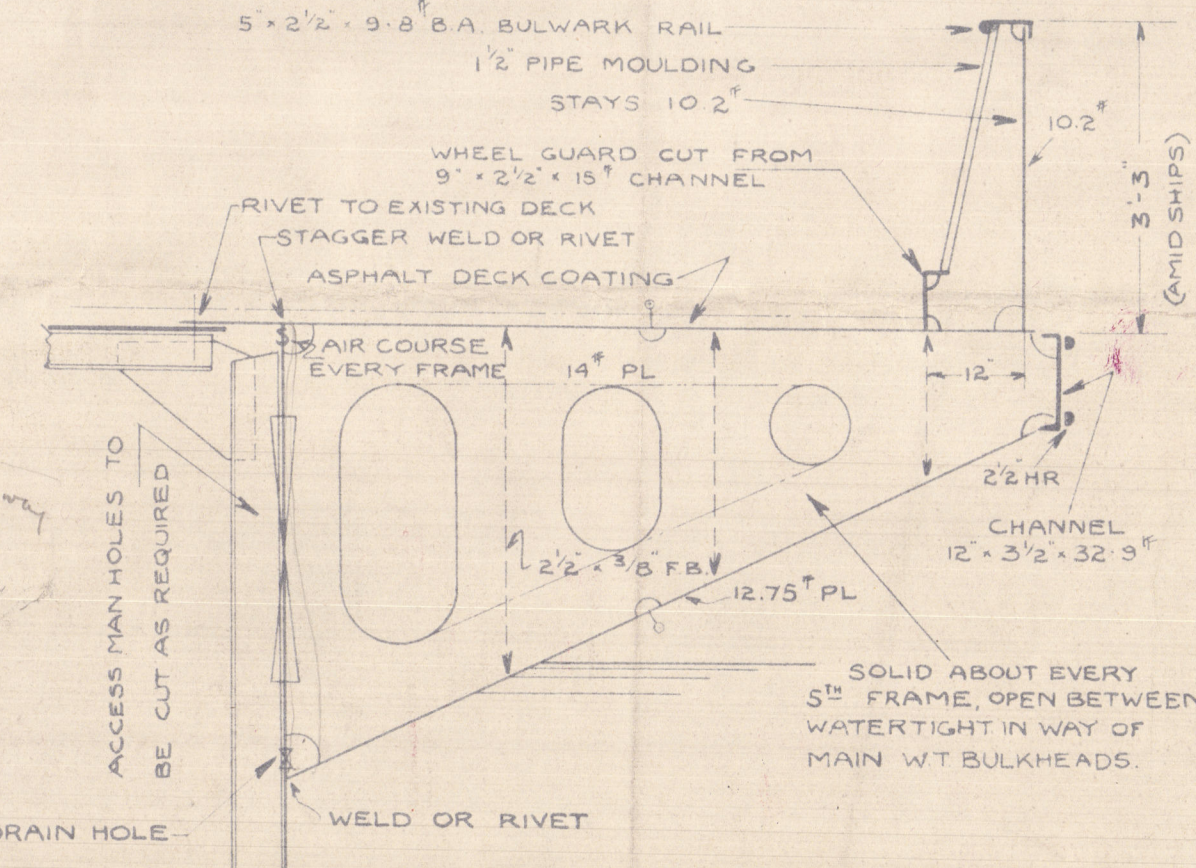


AUTO DECK



PROMENADE

BOAT DECK



SPONSON DETAIL

STRAIGHT PLATING FORWARD CURVED OUTWARD FOR INCREASED BUOYANCY AFT

Detail plans to be submitted

Glasgow



DESIGN NO. 659

GERMAN & MOINE
NAVAL ARCHITECTS
MONTREAL

Lloyd's Register
Foundation

AUGUST 6, 1946

008186-008200-0103

1232

Profile Decks.

Hollingswood Shipyard. Ltd.

Kingston-Wolfe Island Ferry

25.9.46.

WOLFE ISLANDER.

Profile & Deck

Geman & Milner

(Kingston-Wolfe Island Ferry)

14 SEP 1946

Box

008186-008200-0103

Profile Deck



© 2021

Lloyd's Register Foundation