

FRI. 1 JUL 1921

Index No. 29520
(For London Office only.)

Lloyd's Register of Shipping.

SURVEYS FOR FREEBOARD.—STEAM SHIPS.

3164

PARTICULARS RELATING TO ALL STEAM SHIPS EITHER FLUSH DECKED, OR WITH TOP GALANTRY FORECASTLES, SHORT POOPS AND BRIDGE HOUSES DISCONNECTED, OR WITH TOP GALANTRY FORECASTLES HAVING LONG POOPS, OR RAISED QUARTER DECKS CONNECTED WITH BRIDGE HOUSES, OR OTHERWISE.

Port of Survey *Kobe*
Date of Survey *While building*
Name of Surveyor *H. F. House*

Ship's Name
TACHIBANA MARU

Port of Registry and Nationality.
OK.
JAPANESE

Official Number.

Gross Tonnage.

Date of Build.
1921

Particulars of Classification
100 A1 Carrying Petroleum in bulk. Long framing (contemplated)

Number in Register Book

Registered dimensions from Ship's Register.	LENGTH.	BREADTH.	DEPTH.	UNDER DECK TONNAGE.
	420.0	54.0	32.4 <i>actual taken</i>	5576.92
Length on LOADLINE.		Frame Depth 9 Rule 7 <i>2x2-4" 2</i> <i>70 Sggs + 4"</i>	Ceiling 0 Sheer 0	Peak } included Tanks }
CORRECTED DIMENSIONS.	420.0	54.0	32.4	5673.92 <i>Eng. room tank</i> <i>F.W. 97.0 tons</i>

Moulded Depth as measured.....**33.0"**

NOTE.—If the depth is measured when vessel is afloat, the details of measurement should be reported.

Addition for Keel below base line for draught record.....**2 3/4"** inches.

CORRECTION FOR LENGTH.

Length of Ship on Loadline.....	420.0	✓
Length in Table	396.0	
Difference	24.0	
Correction for 10ft., Table A.	1.6	Table C. .8
× Difference divided by 10	3.84 (if required.)	1.92
If $\frac{1}{10}$ ths length covered divide by 2	+ 3 3/4	+ 2" ✓

CORRECTION FOR IRON DECK.

Proportion covered, if less than $\frac{1}{10}$ ths length covered4458	
Thickness of usual wood deck, less stringer	3.24	- 1 1/2" ✓

CORRECTION FOR ROUND OF BEAM.

Breadth at Gunwale amidships.....	54.0	
Round of Beam	13 1/2	
Normal round.....	13 1/2	
Difference	✓ ÷ 2 =	✓
Proportion of Deck uncovered (Para. 19)		✓

NOTE.—The round of beam should be reported on the full breadth of vessel at the gunwale.

Co-efficient of fineness.....**.77**
Any modification necessary }
[Para. 4 (a) to (e)]*
Co-efficient as corrected**.77** ✓

Sheer { Stem.....**95.0**
at { Sternpost ...**57.25** } **152.25 ÷ 2 = 76.125**...Mean
Sheer at $\frac{1}{2}$ of the length from { Stem **31.5**
Sternpost **21.0** } **52.5 ÷ 2 = 26.25**...Mean
Gradual mean Sheer *plotted* **45.78** ✓
Standard mean Sheer [Table, Para. 18]**52.00** Correction
Difference.....**6.22 ÷ 4 = 1.55**
§ If limited as Para. 18 (f)**+ 1 1/2"**

— SHEER HEIGHTS —

Rise in Sheer from amidships [Para. 18 (e)]	At front of bridge house	1/8 FROM AFT	57 1/4
	At after end of forecastle	1/8 FROM AFT	21
Fall in Sheer Para. 18 (d)		1/8	0
Length uncovered		1/8	0
		FOR PER	95
			Correction ✓

ALLOWANCE FOR DECK ERECTIONS:—

Freeboard, Table C.....	5'-7 3/8"	✓
Correction for Length, if required (Para. 12, 13, and 14)	+ 2"	✓
Freeboard by Table A, corrected for sheer, and for length, if required (Para. 12, 13, and 14)	9'-3"	✓
Difference	3'-3 3/8"	✓
Percentage as below.....	78.2%	✓
	= 11.63	

Correction for R. Q. Dk. if engine and boiler openings not covered by bridge house (Para. 11) **- 1 1/2"**
Allowance for Deck Erections

	Length.	Length allowed.	Height.
Forecastle.....	34'-0"	34.0 ✓	7'-6"
Bridge House	36'-0"	36.0	8'-0"
† Raised Qr. Dk.....	✓		
Poop.....	117'-3"	117.25 ✓	8'-0"
Total		187.25	44'-58"
Length of Ship		420.0	
Corresponding percentage (Para. 11, 12, 13, and 14) }	78.2%		

FREEBOARD recommended amidships from centre of Disc to top of Statutory Deck Line, (Iron) Deck:—

5.7.21	Fresh Water Line	above centre of Disc	...
	Indian Summer Line	" " "	...
	Winter Line	below " "	...
	Winter North Atlantic Line	" " "	...

† If the frames, skin planking, or ceiling are of unusual thickness the breadth of vessel to inside of ceiling should be reported if possible.
† In vessels obtaining an allowance for deck erections under Para. 11 where the sheer drops abaft amidships the height of the R.Q.D. is to be taken from the level of the top of the amidship beam.
§ In flush-decked vessels the total standard mean sheer means the sheer measured at the stem and stern-post. In vessels having poops and forecastles, it means the sheer measured at points distant one-eighth of the vessel's length from stem and stern-post.

Freeboard, Table A	8'-9 1/4"	✓
Correction for Sheer	+ 1 1/2"	✓
Correction for Length	+ 3 3/4"	✓
Allowance for Deck Erections	9'-3"	✓
Correction for Round of Beam.....	- 1 1/2"	✓
Correction for fall in Sheer (if any).....	8'-2"	✓
Correction for Iron Deck (if required)	+ 1 1/2"	✓
Additions for non-compliance with provisions of Para. 11 (d) and (e) †		✓
Other Corrections (if any)		✓

Winter Freeboard**8'-2"** ✓
Summer Freeboard**7'-8"** ✓
Indian Summer Freeboard**7'-2"** ✓
~~N.A. Winter Freeboard~~

Correction necessary because clearside amidships, measured in accordance with the Statute is not taken at the intersection of the ~~wood~~ or iron deck with side. **+ 1 1/2"**

Winter Freeboard from deck line	8'-3 3/4"	✓
Summer " " " "	7'-9 3/4"	✓
Indian Summer " " " "	7'-3 3/4"	✓
N.A. Winter " " " "		
(Iron) Deck:—	7'-9 3/4"	✓

† State dimensions of freeing port area on back of this form.
† The Surveyor should state whether the fall in sheer as reported is measured relatively to the straight line of keel or to the water line. If measured relatively to water line the vessel's draft at time of survey, and also the usual load draft forward and aft should be reported.

008168-008176-0139

RECEIVED 27.21

Do all the Frames extend to the top height in the Poop? *Long framing* Raised Quarter Deck? *-* Bridge House? *Long framing* Forecastle? *Long framing*

To what height do the Reverse Frames extend?

Has the Poop ~~Raised Quarter~~ Deck an efficient Iron Bulkhead at the fore end? *yes*

Give particulars of the means for closing the openings in Bulkhead *2 Hinged steel doors 5'-0" x 3'-3" W.J.*

Is the Poop ~~Raised Quarter~~ Deck connected with the Bridge House? *no* Has the Bridge House an efficient Bulkhead at the fore end? *yes*

Give particulars of the means for closing the openings in Bulkhead *2 Hinged steel doors 5'-0" x 3'-3" W.J.*

What is the thickness of the Bridge Front plating? *.42* and Coaming plate? *.50*

Give scantlings and spacing of the Stiffeners *10" x 3 1/2" x .56" Built angle spaced 39" apart*

Are bracket plates fitted at each end of the Stiffeners? *yes* Are hor'l. brackets fitted connecting Bridge Bulk'd. with Bulwarks? *yes*

Has the Bridge House an efficient Iron Bulkhead at the after end? *yes*

How are the openings closed? *Storm boards - full height*

Is the Forecastle at least as high as the main or top-gallant rail? *yes* Has the Forecastle an efficient Iron or Wood Bulk'd. at after end? *Steel bulkhead*

Are the Engine and Boiler openings covered by a Bridge, Poop, Raised Quarter Deck, or enclosed by a Strong Iron or Steel Deckhouse? *Poop Deck*

If the openings are not so protected are the exposed parts of the Casings efficiently constructed? *-*

Give thickness of plating; scantlings and spacing of Stiffeners *-*

What is the height of the exposed Casings? *-* Are suitable means provided for closing all openings in them in bad weather? *-*

Are the Weather Deck Hatchways efficiently constructed and at least equal to the requirements of Section 28 of the Rules for 1904-5? Give particulars below:—

Position and Size.		CARGO HATCH FORWARD		CARGO HATCH - POOP DECK							
Item.	Ship.	Rule.	Ship.	Rule.	Ship.	Rule.	Ship.	Rule.	Ship.	Rule.	
COAMING.	Height above top of DECK	24'	24	18	18						
	Thickness {	Sides.....	.44	.44	.46	.46					
		Ends.....	.44	.44	.46	.46					
WEATHER DECK WEB PLATES.	Number	1	1	1	1						
	Section and Scantlings	as approved		as approved							
	Material.....	Steel 18"x36" _{1/2} 4"x3"x.44		Steel 18"x36" _{1/2} 4"x3"x.44							
* FORE AND AFTERS.	Number										
	Section and Scantlings	-	-	-	-						
	Material										
HATCHES Thickness	3"	3	3"	3"							
Remarks.....											

* The depth of Fore and Afters should be stated from the underside of the hatches in all cases.

(If the sill of the lowest side scuttle will be less than 6 inches above the Indian Summer Load Line if assigned under the tables, state vertical distance from top of deck at side amidships to lower edge of lowest side scuttle.)

The following information is to be given in all Cases of vessels dealt with under Paras. 11, 12 (under 15 feet Moulded depth) and under Shelter Deck Rules.

What is the thickness of the Bridge Sheerstrake?

Strake between Main and Bridge Sheerstrakes?

Delete the words { The Crew are, are not, berthed in the bridge house.

that do not apply { The arrangements to enable them to get backwards and forwards from their quarters are, are not satisfactory.

Length of Bulwarks in well

Area of Freeing Ports required by Para. 11 (e) each side of vessel =

Sq. ft.

Ft. Tenths. Ft. Tenths. No.

x

x

Freeing Ports (each side of vessel) =

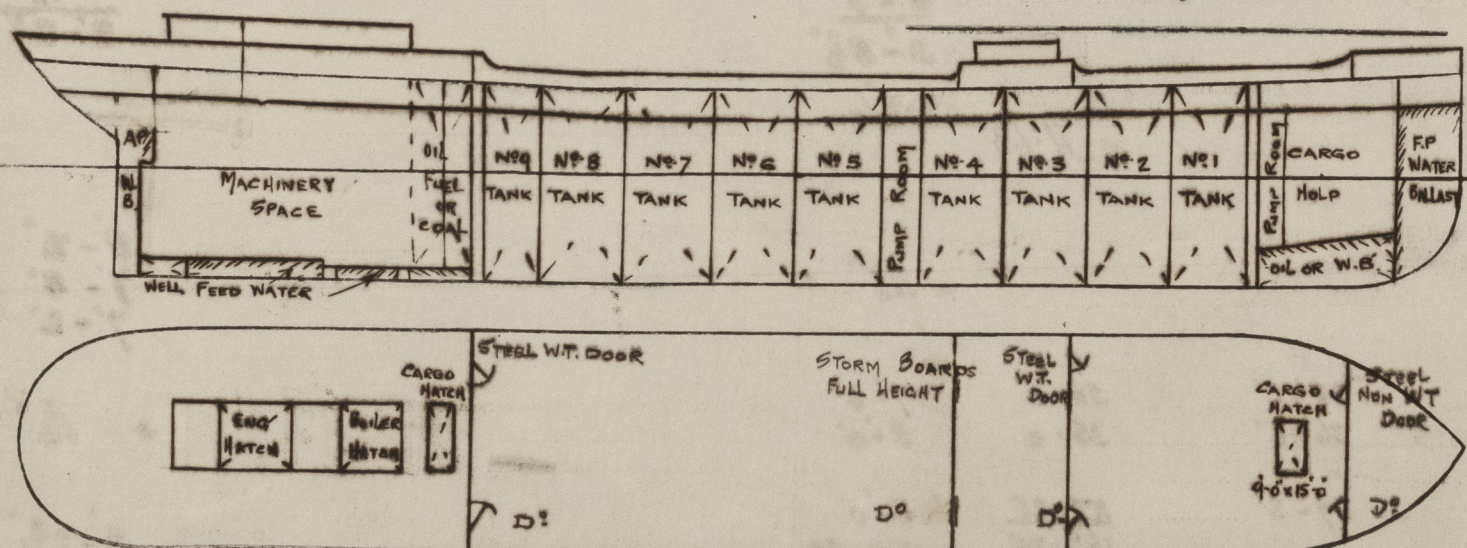
Sq. ft.

x

x

Total deficiency or excess =

Sq. ft.



Show hereon line of Floors or Tank Top with position of any Breaks in same; also height of Peak Tank tops, &c., &c.

State any special features in the construction of the Vessel

The freeboard as recommended has been marked on the vessels side and a verification form is enclosed.

Owners

Teikoku Steamship Company.

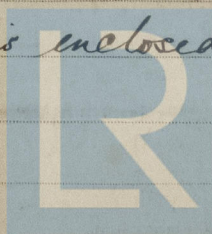
Address

Kobe

Fee

150.00

Received by me



Lloyd's Register Foundation