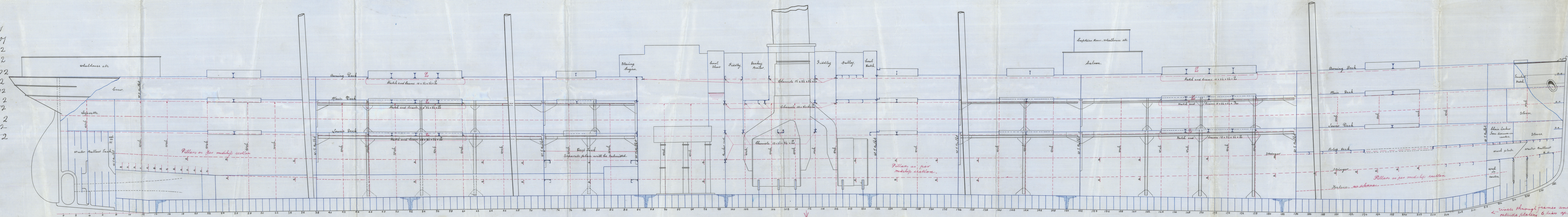


Longitudinal Section of Twin Screw Steamer.

As built. L.M.
Dimensions 505'-0" x 58'-0" x 12'-6" Mod to drawing 84

Scale 1/8" = one foot.

29.11.01
24.12.01
16.1.02
31.1.02
4.2.02
11.3.02
12.4.02
19.4.02
29.4.02
15.7.02
23.7.02
31.7.02

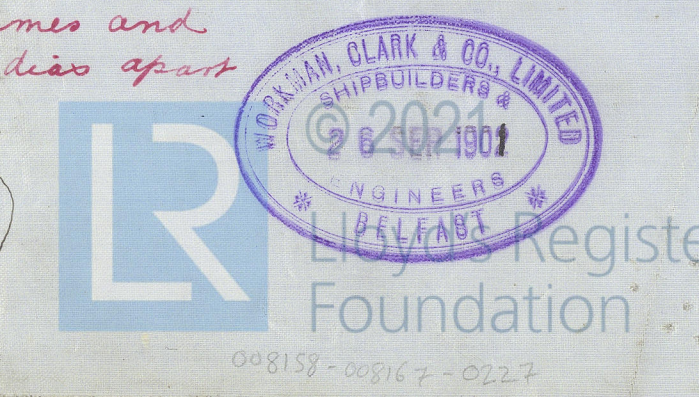


ribs through frames and outside plating 6 dia apart.

ribs through frames and outside plating 6 dia apart.

Bottom forward strengthened as per Rule.

ribs through frames and outside plating 6 dia apart.
Stops Railways Stamp 28.9.01
29.11.01



Handwritten notes in the top right corner, including '29.11.01' and '24.12.01'.

Workman Clark & Co Ltd

SS 195

Profile As built

embodying app^d alterations

T.S.S. Wayfarer

Ref. 5555*



© 2021

Lloyd's Register
Foundation

008158-008167-0227