

# SN: 108-108 RUDDER & STERN FRAME

SCALE 1/5, 1/5

### PARTICULARS:-

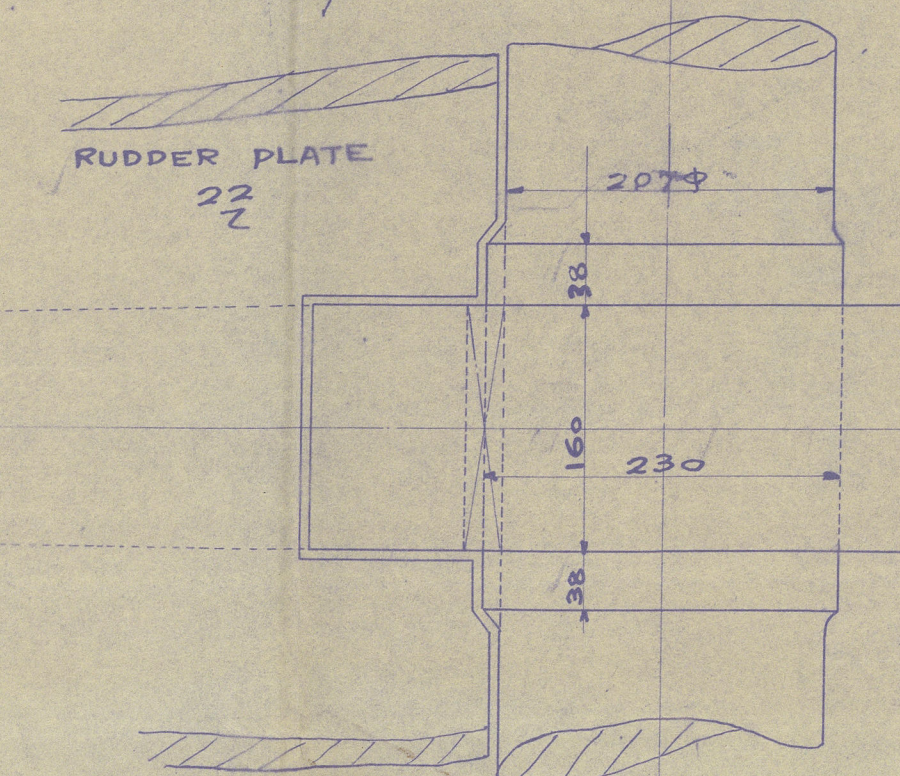
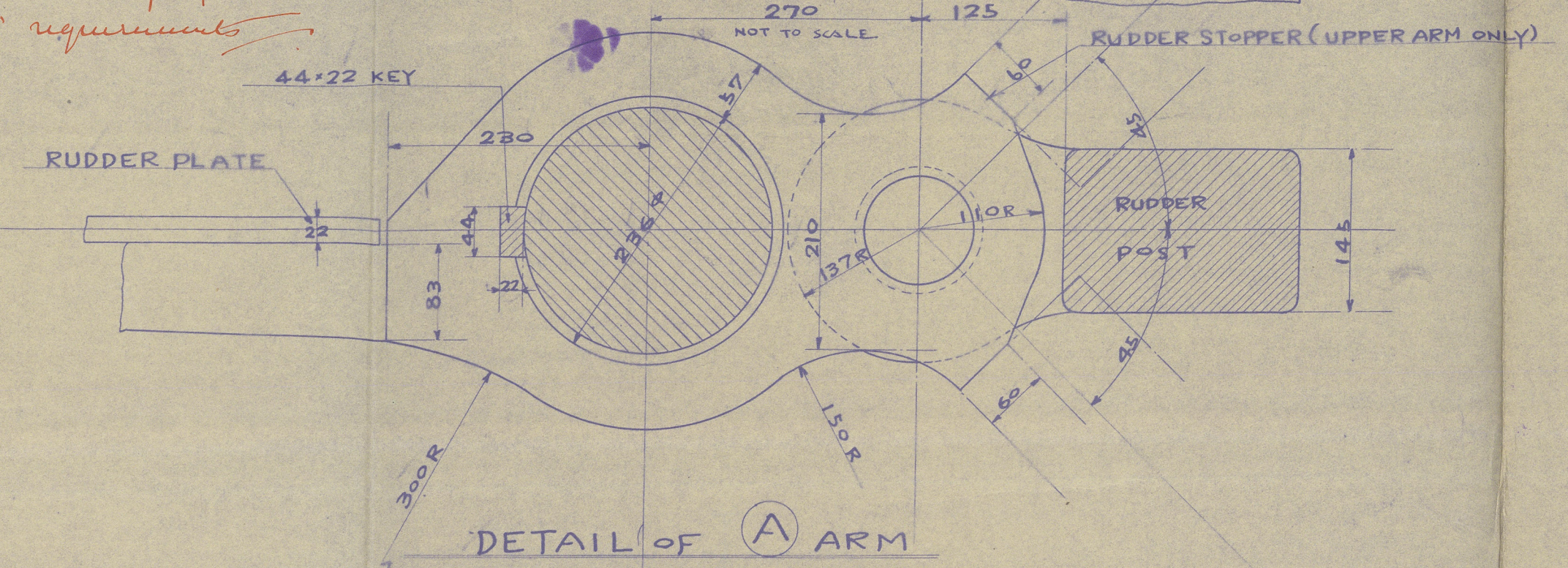
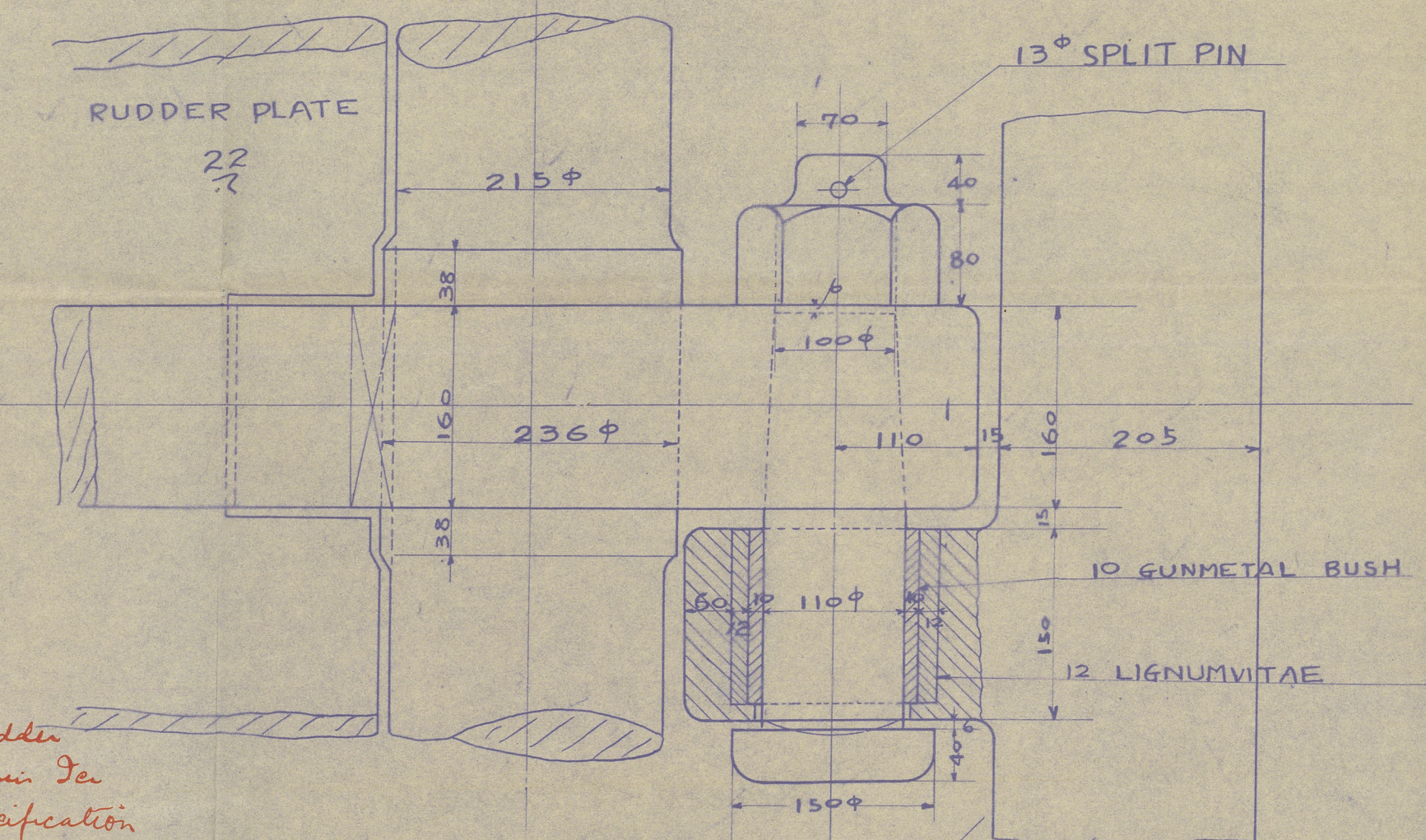
RUDDER AREA (A)	6933 <sup>50M</sup>
C.G. OF AREA (D)	0.795 <sup>M</sup>
100x A x D	551
RATIO OF AREA (A/D)	1/60
SEA SPEED (V)	12 KNOT

### MATERIAL:-

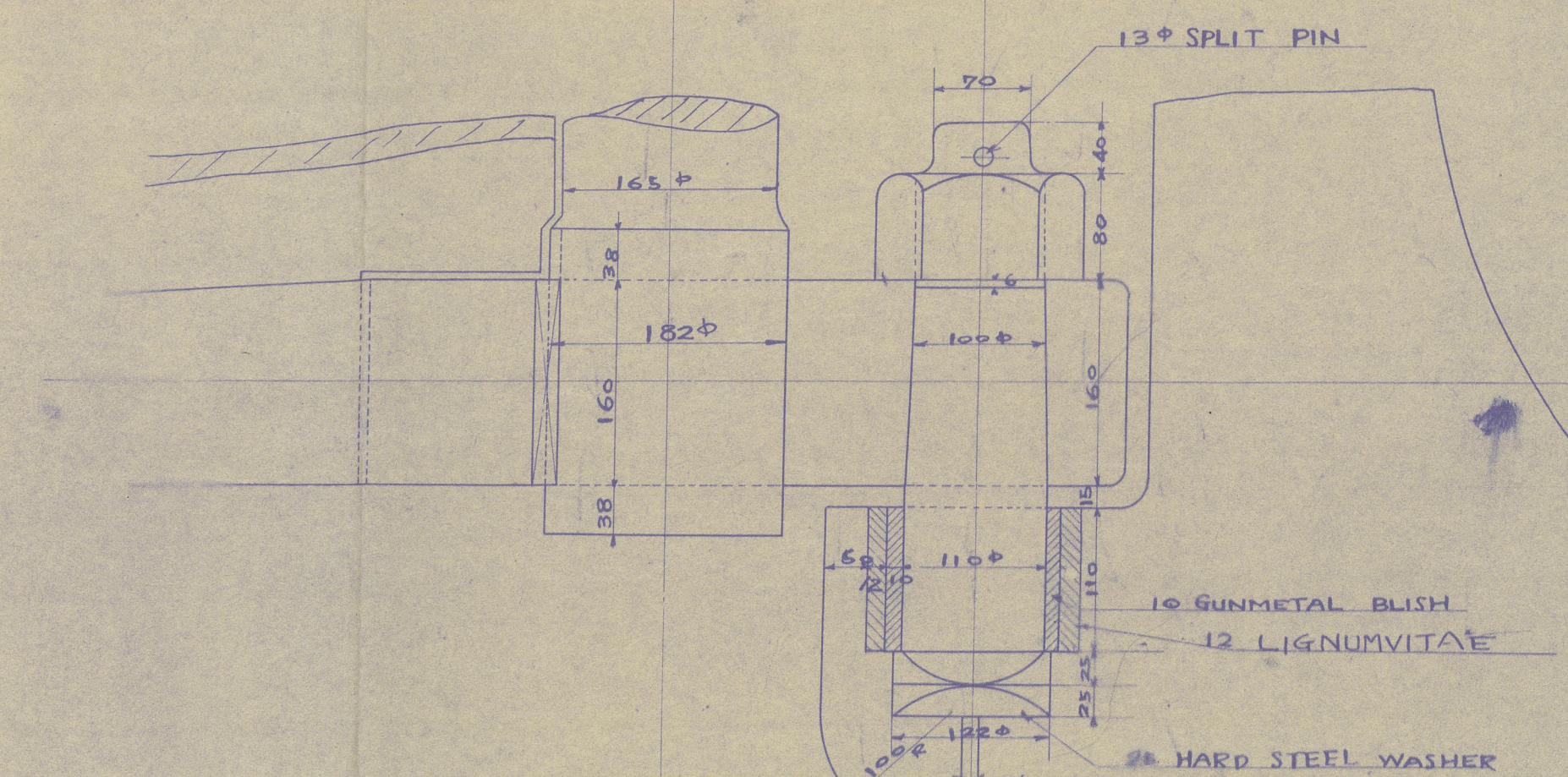
STERN FRAME	CAST STEEL
RUDDER STOCK	FORGED STEEL
RUDDER ARM	D <sub>2</sub>
PINTLE	D <sub>2</sub>
MAIN PIECE	D <sub>2</sub>
TILLER	D <sub>2</sub>

*Notes:*  
In Rule diameter of Rudder Stock for Navigation in Dec in 1921 m. In Specification for British requirements.

### DETAIL OF STOPPER ARM



### DETAIL OF B ARM



APPROVED

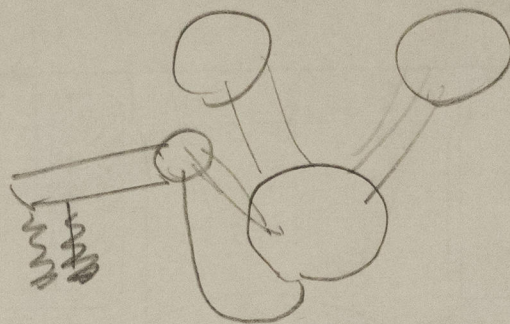
DEC 15 1936

KOBE

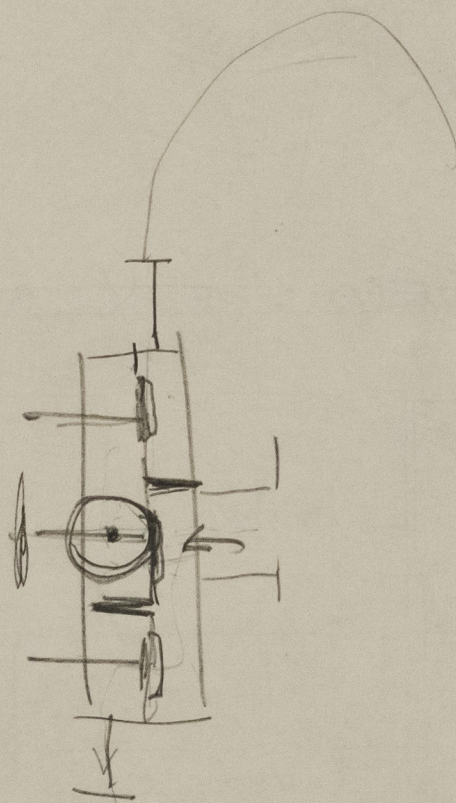
TSUBO  
BOCKYARD ENGINE WORKS  
NAGASAKI  
NOV 27 1936  
NAGASAKI JAPAN

TSUBO  
BOCKYARD ENGINE WORKS  
NAGASAKI  
DRAWN BY  
TRACED BY  
CHECKED BY  
DATE Nov. 25 1936





RUDDER & STERNFRAME  
 FOR  
TENRYO MARU  
MINRYO MARU  
TIRYO MARU

© 2021

Lloyd's Register  
Foundation

9210-791800-851800