

Cargo ship for creatures

Alteration of L.C.T. 8. 4027

Midship section, profile and Deck

Scale: 1:100 & 1:50

Dimensions:

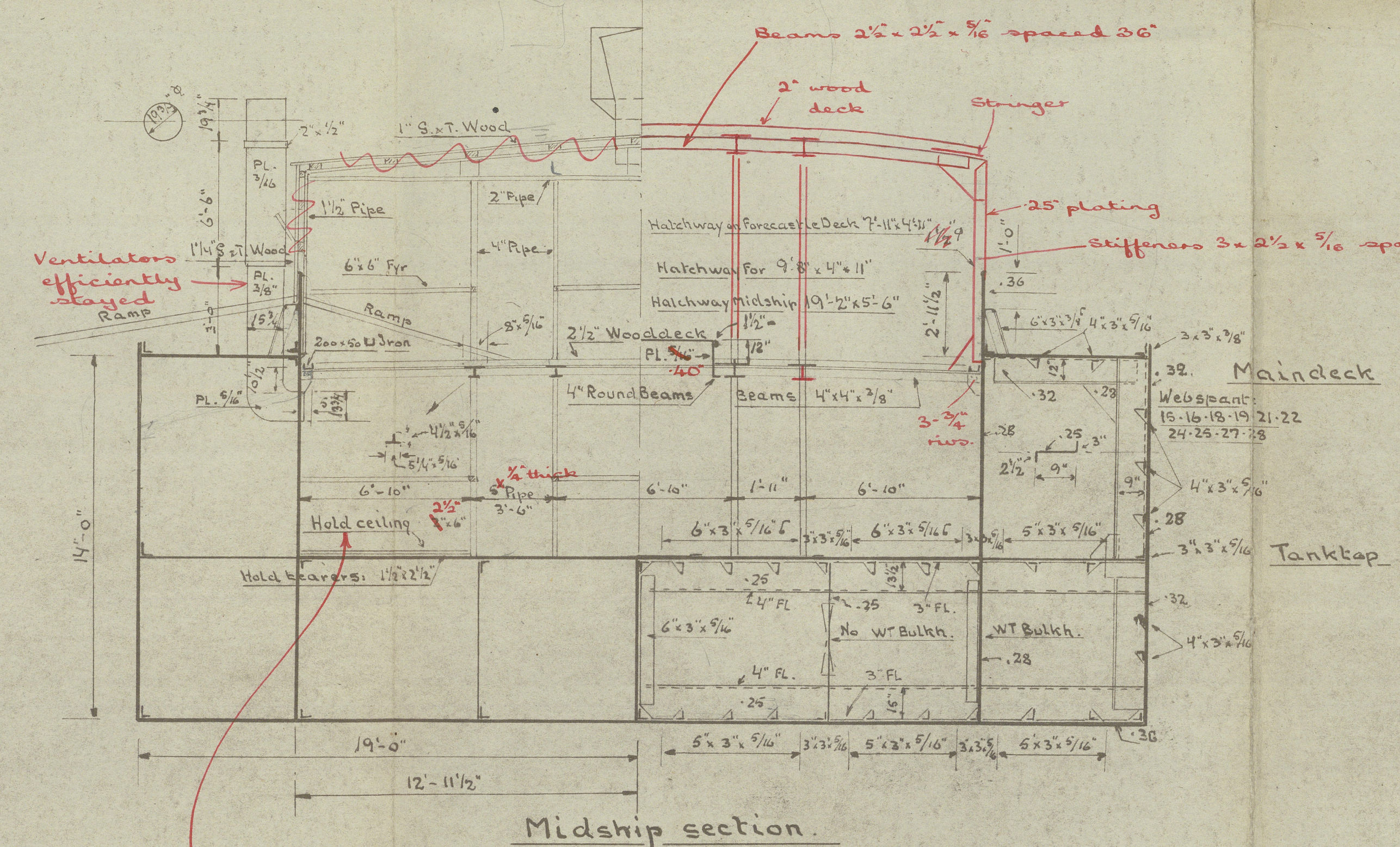
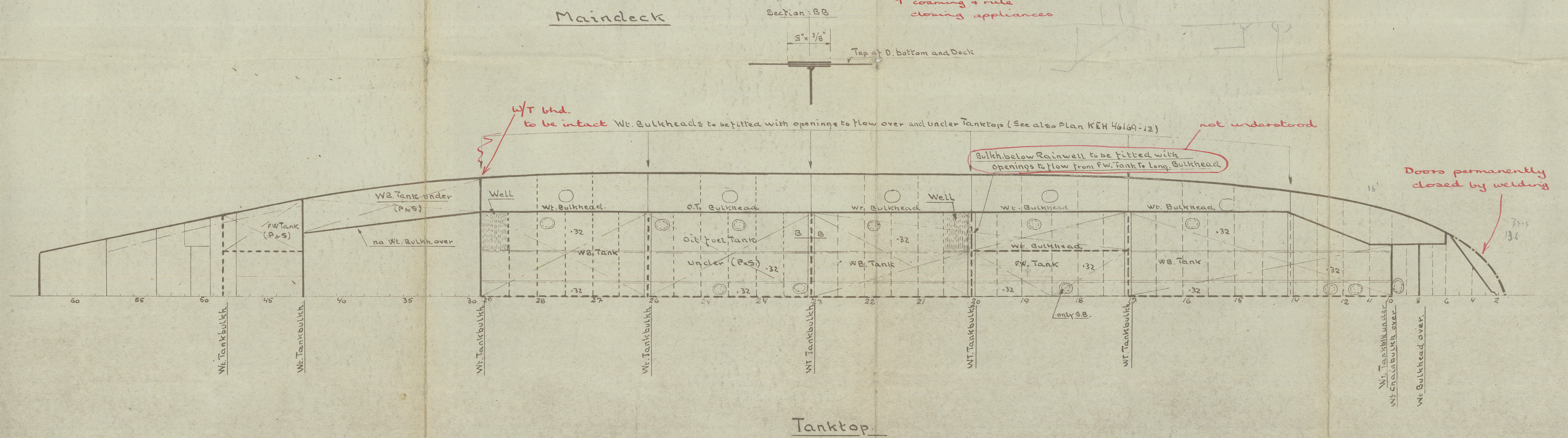
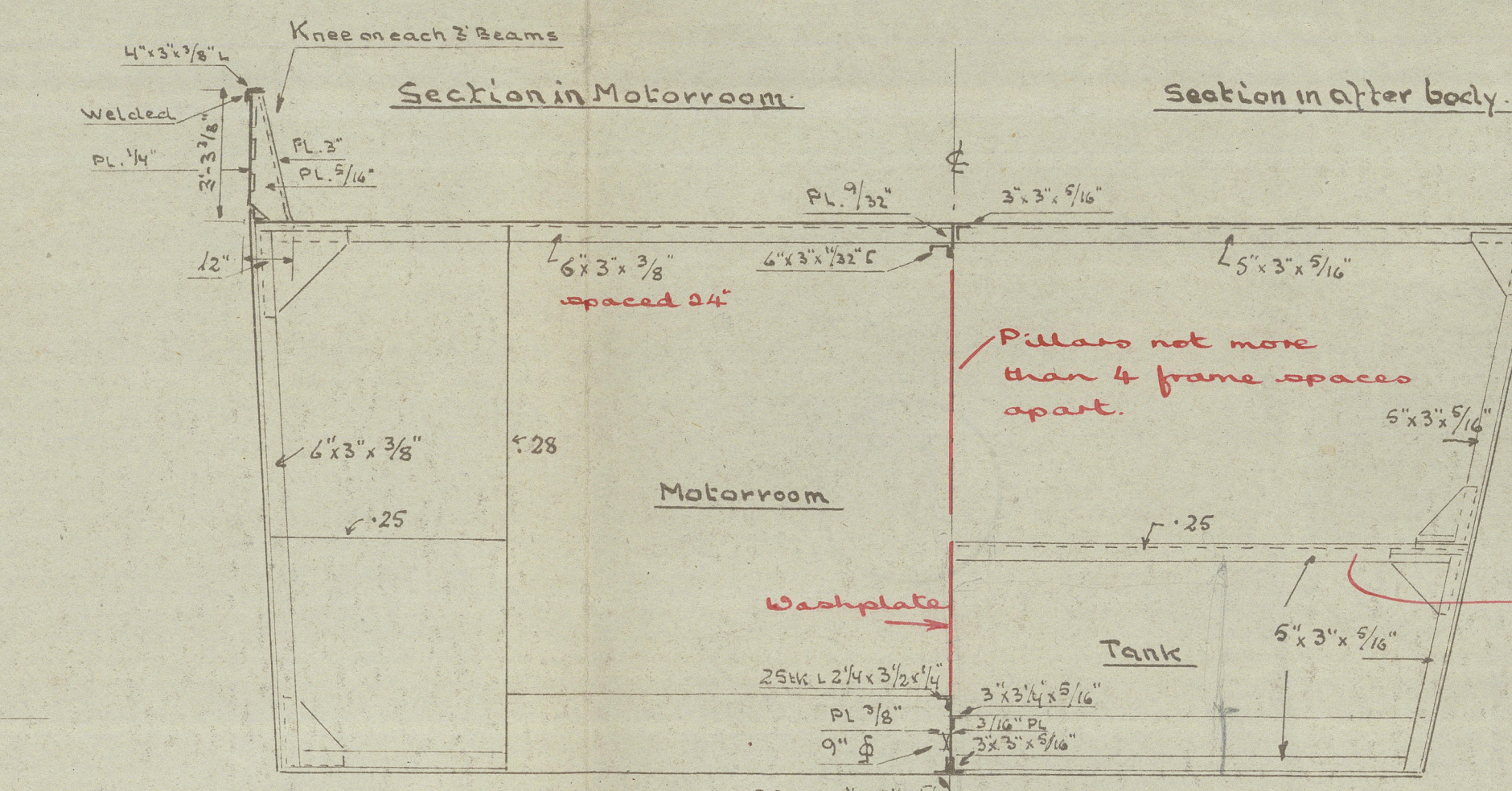
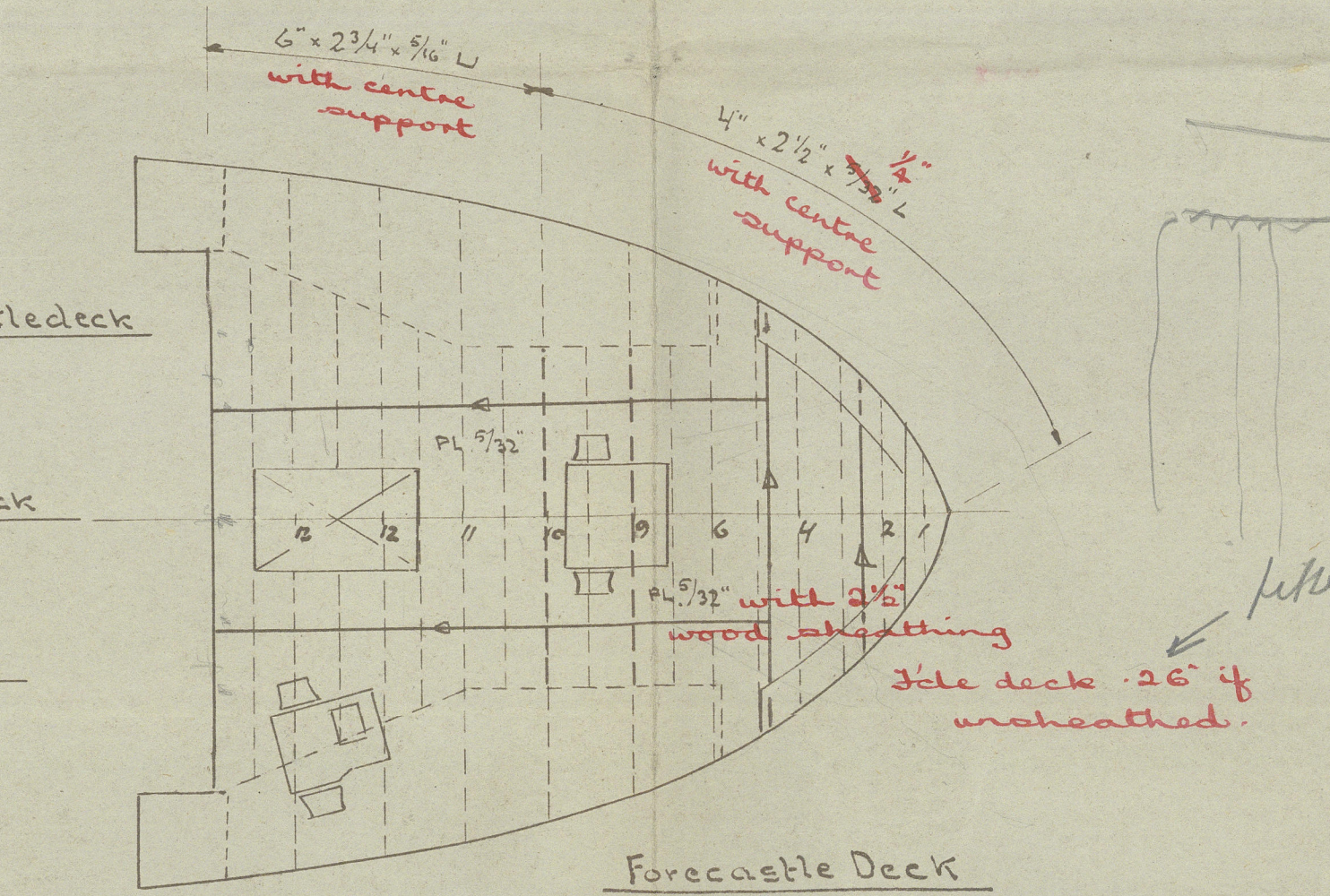
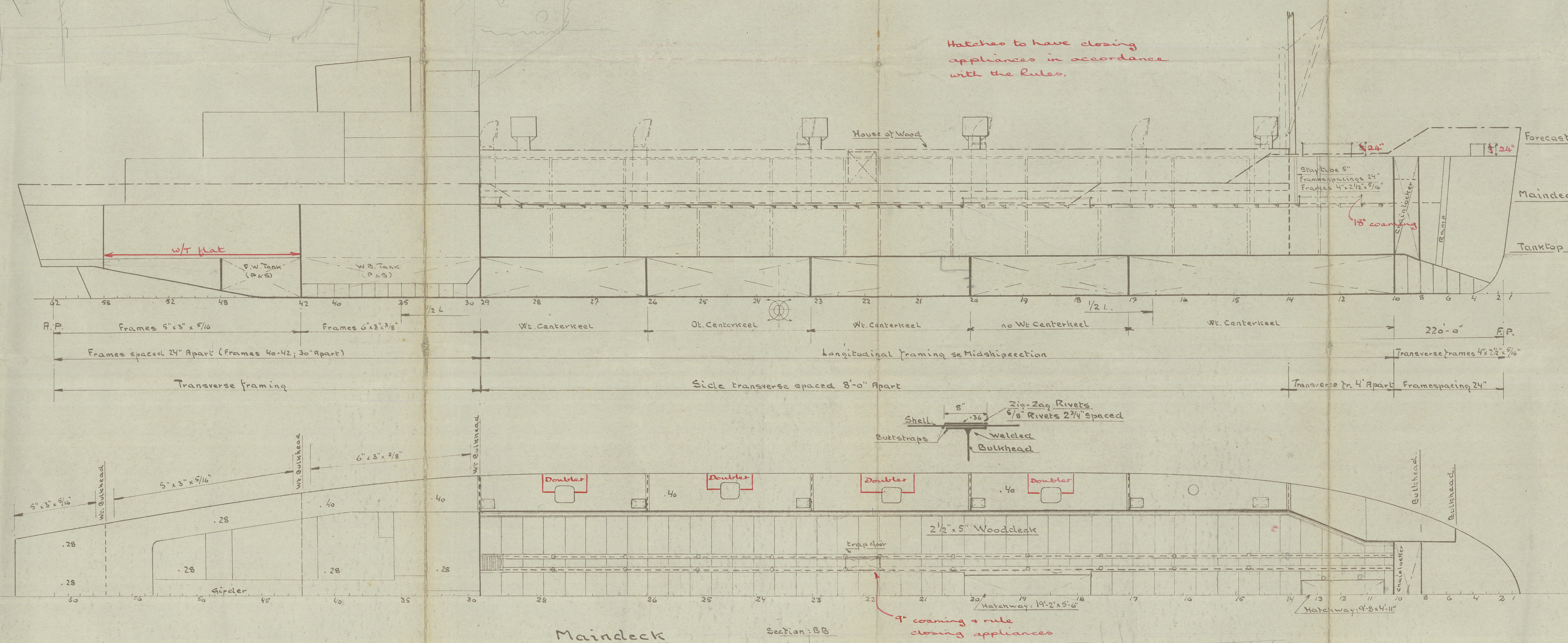
Length between p.p.	220'-0"
Breadth moulded	35'-0"
Depth to maindeck	14'-0"

Type: Single deck Wessel.

Class: Lloyds Register + RI with Freeboard corresponding to a summer Moulded draft of 9'-0"
 For Coasting service Antwerp to the Kattegat & Baltic via Kiel Canal, also Antwerp to Ireland in summer months.

Equipment:

Letter "L"	
3 Bower Anchor Stockless	3025 kg
1 Stream Anchor Ex. Stock	290 kg
385 meters 35 mm steel chain cables	
110 meters 83 mm 6x12 Flexible Steel Wire, Breaking Test: 22.0 t.	
165 meters 76 mm 6x12 Flexible Steel Wire, Breaking Test: 18.9 t.	
165 meters 57 mm 6x12 Flexible Steel Wire, Breaking Test:	
165 meters 44 mm 6x12 Flexible Steel Wire, Breaking Test:	



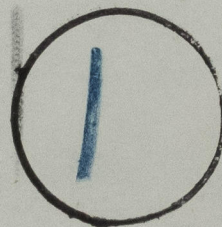
length well = 136 feet
 area of fore part 27.20
 2.52 amth

73

M/V "Jaco" of Copenhagen ★
(ex L.C.T. 8-4027).

Gen. Rpt. N° 12340

RECORDS DEPT.,
LONDON



Midship Section, profile & decks.



© 2021

Lloyd's Register
Foundation

008158-008167-0037