

25 MAY 1945

Index No. 37972  
(For London Office only).

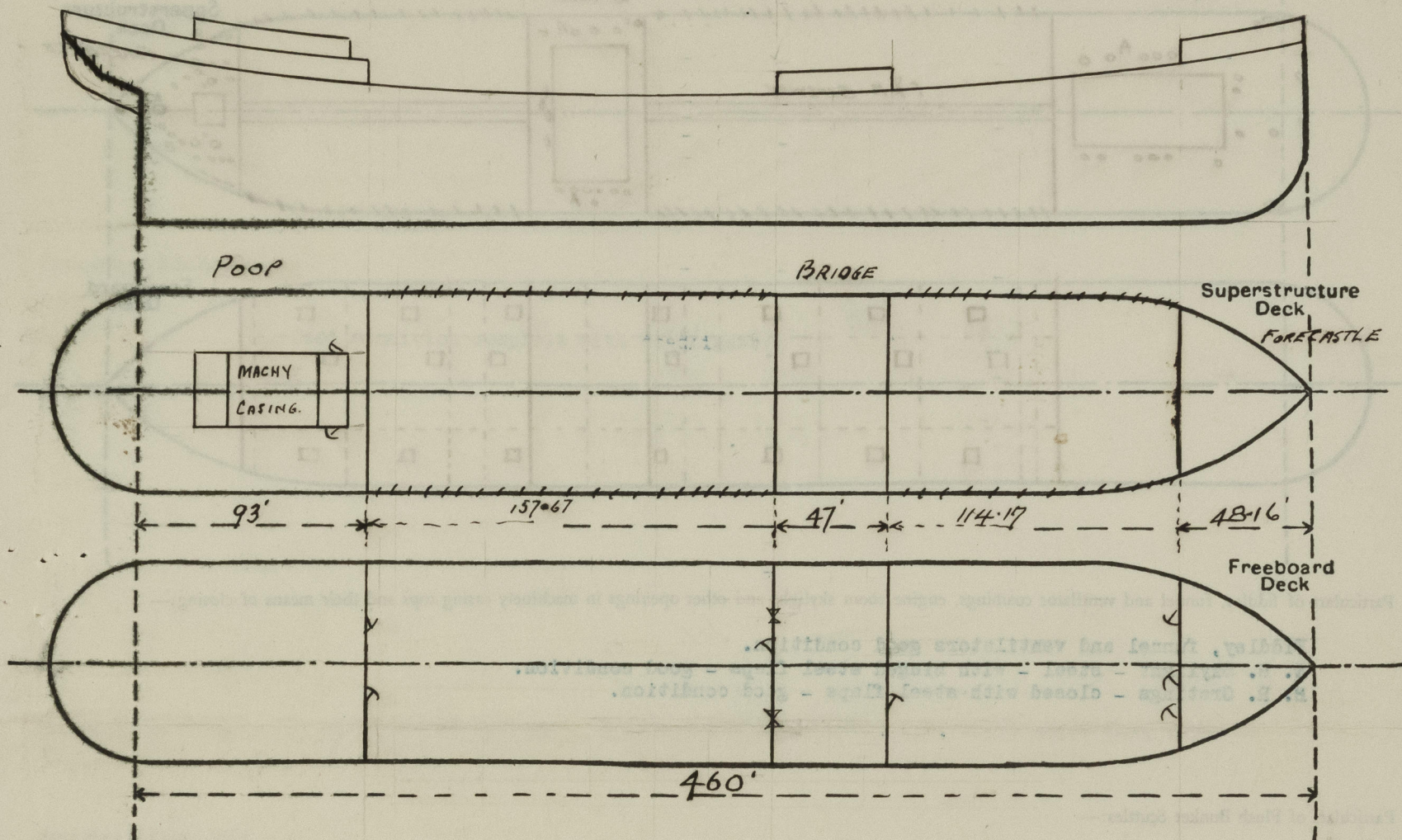
# Lloyd's Register of Shipping.

## SURVEYS FOR FREEBOARD.

(CONDITIONS OF ASSIGNMENT.)

Ship's Name LAVORO Port of Survey Baltimore, Md.  
 Official Number - Surveyor's Signature J. J. McInchuan  
 Nationality and Port of Registry Italian - Naples Date of Survey 28th September 1944 and Subsequent dates

Disposition and dimensions of superstructures, trunks, deckhouses and machinery casings to be inserted in the diagrams and tabular statement:—



Particulars of Superstructures, Trunks, Casings, Deckhouses.								
	Coaming	Plating	Stiffeners	Spacing	End Attachments of Stiffeners	Size of Openings	Height of Sills	Height of Casings
Poop Bulkhead ...	.44	.44	6x6x.50 8.4x.44	25"	Bkts. top and bottom	1 (p&s) 54" x 32"	24	7' 4 1/2"
Raised Quarter Deck Bulkhead ...	-	-	-	-	-	-	-	-
Bridge, After Bulkhead ...	.32	.32	3x2 1/2 x.38	33	None	3 (2p&1s) 52 x 37	22	7' 4 1/2"
Bridge, Forward Bulkhead ...	.44	.44	8x4x.50	27 1/2	Bkts. top and bottom	One 62 x 32	18	7' 4 1/2"
Forecastle Bulkhead ...	.32	.32	3 1/2 x 2 1/2 x.38	28	None	1 (p&s) 52x24 1 (s) 55 x28	25	7' 4 1/2"
Trunk, Aft ...	-	-	-	-	-	-	-	-
Trunk, Forward ...	-	-	-	-	-	-	-	-
Exposed Machinery Casings on Freeboard or Raised Quarter Decks ...	-	-	-	-	-	-	-	-
Exposed Machinery Casings on Superstructure Decks ...	.34	.34	3x2 3/4x.34	30	extends above and below	1 (p & s) 5' x 2'	18	7' 9"
Machinery Casings within Superstructures not fitted with Class I Closing Appliances ...	-	-	-	-	-	-	-	-
Deckhouses on Flush Deck Ships ...	-	-	-	-	-	-	-	-

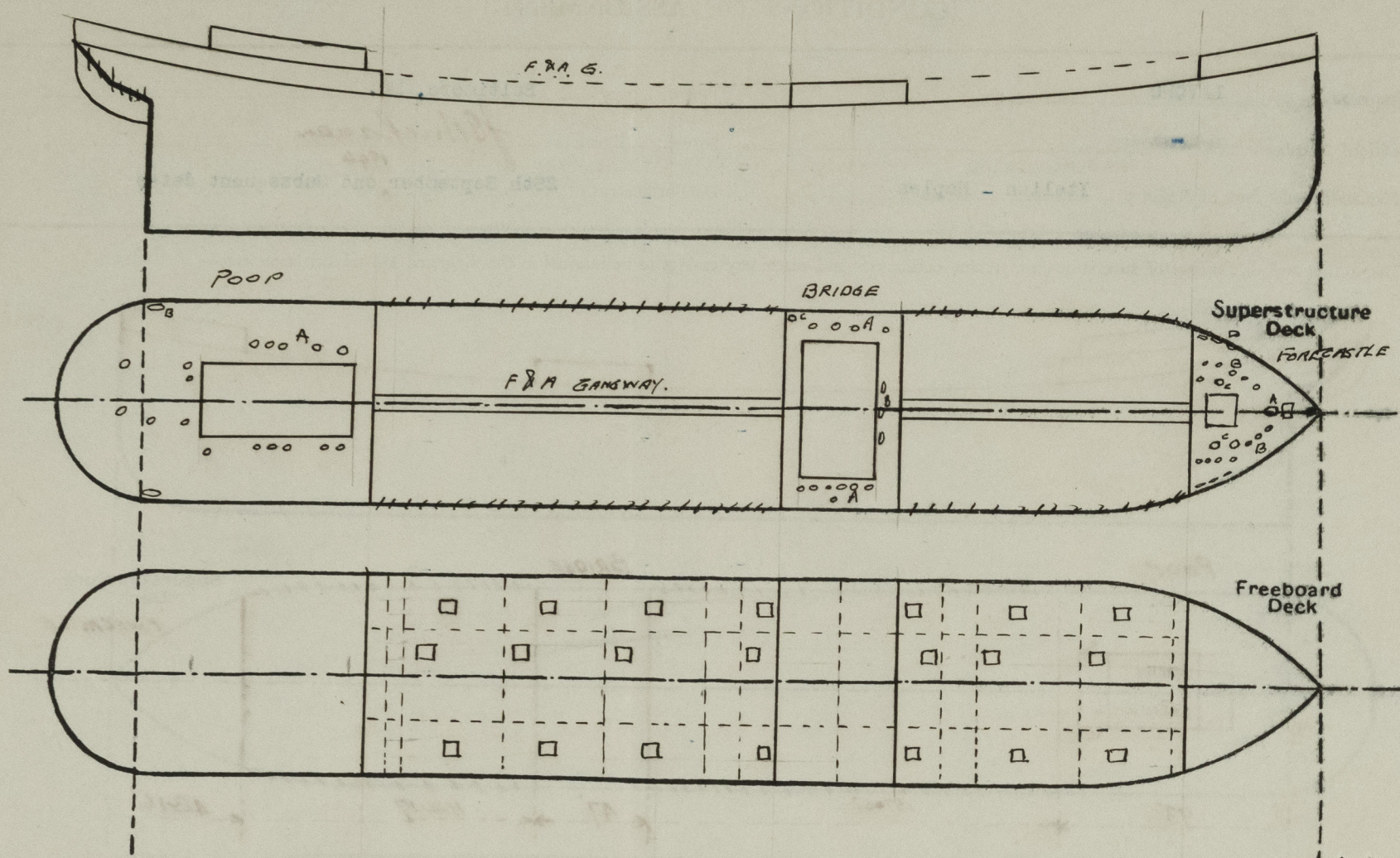
### Particulars of Closing Appliances (state if capable of being manipulated from both sides).

Poop Bulkhead ...	1 (p & S) Hinged steel watertight doors - capable manipulation both sides.
Raised Quarter Deck Bulkhead ...	-
Bridge, After Bulkhead ...	1 (P & S) Steel hook bolted plates - 1 steel hinged W.T. door - manipulation both sides
Bridge, Forward Bulkhead ...	1 (s) Hinged steel W. T. door - capable manipulation both sides.
Forecastle Bulkhead ...	1 (p & s) 2" Hardwood doors; 1 (s) Hinged steel W.T. door - all capable manipulation both sides
Exposed Machinery Casings on Freeboard or Raised Quarter Decks ...	-
Exposed Machinery Casings on Superstructure Decks ...	1 (p & s) 2" Hardwood doors - Capable manipulation both sides
Machinery Casings within Superstructures not fitted with Class I Closing Appliances ...	-
Deckhouses on Flush Deck Ships ...	-



# PARTICULARS OF PROTECTION TO OPENINGS, ETC.

The following diagrams should be used to indicate the positions of cargo and coaling hatchways, gangway, cargo and coaling ports, ventilators, companionways, etc., which would affect the seaworthiness of the ship:—



Particulars of fiddle, funnel and ventilator coamings, engine room skylight and other openings in machinery casing tops and their means of closing:—

Fiddle, funnel and ventilators good condition.  
E. R. Skylight - steel - with hinged steel flaps - good condition.  
E. R. Gratings - closed with steel flaps - good condition.

Particulars of Flush Bunker Scuttles:—

None

Particulars of Companionways:—

Pump Room - Steel Casing - opening closed with steel hinged W. T. Door 15" dia.

Particulars of Ventilators in exposed positions on freeboard and superstructure decks:—

Fore Dk.  
A - 12" dia. 36" high, wood plugs and canvas covers.  
B - 9 (p) & 7 (s) - 6" dia., 27" - 30" high, .32" coamings - with screwed mushroom flat covers.  
C - 1 (p) & 2 (s) - 10" dia., 36" high, .36" coamings - wood plugs and canvas covers.  
D - 3 (p) & 3 (s) - 6 x 3 oval, opening 30" high - closed with steel flaps.

Bridge Deck

A-13 (4 p & 9 s) - 7" dia. - 28" high, .36 coamings - metal screw caps.  
B - 7 (1 p & 6 Ford) 6 x 3 oval - 18" high - " " "  
C - (1 p) 6" dia. - 28" high, .36 " " "

Poop Deck

A - 3 @ 10" dia., 11 @ 12" dia., 2 @ 6" dia. - all 27" high, .38 coamings - metal screw caps  
B - 1 p & s, 6 x 3 oval - 27" high " " "

Particulars of Air Pipes in exposed positions on freeboard, raised quarter, or superstructure decks:—

Fore Dk.

1 - 3" dia. to peak tank, 12" above dk. - canvas cover.

Poop Dk.

2 (p & s) - 3" dia. to double bottom - 18" above dk. - metal flap covers.

Particulars of Gangway Cargo and Coaling Ports:—

None

Particulars of Scuppers and Sanitary Discharge Pipes:—

Good condition and construction - fitted with flap valves.

Particulars of Side Scuttles:—

Good condition complete with deadlights.

Vertical distance of Sill of lowest Side Scuttle above top of keel 3 feet below upper deck, aft, above after peak tank

Particulars of Guard Rails:—

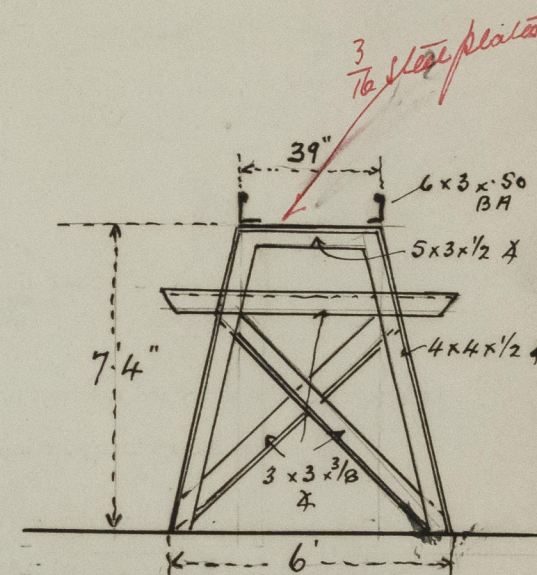
On Poop, Bridge, Forecastle and Upper Deck

3 tiers rails - 42" high - Stanchions about 4' 6" apart

Particulars of Gangways, Lifelines, etc:—

Fore and aft gangway between poop and bridge and between bridge and forecastle.

Supports every 8' 0, and fore and aft diagonal bracing.



## Particulars of Freeing Arrangements.

	Length of Bulwark	Height of Bulwark	Size of Freeing Ports	Number each side	Area each side	Rule area each side
After Well ...	—		Open rails			
Forward Well ...	—					

State position of each freeing port ... { After Well:—

(F. and A. position and height above deck edge) { Forward Well:—

State whether the freeing ports are fitted with shutters, bars, or rails, and give particulars of such:—

Additional area where sheer is less than standard.



PARTICULARS OF PROTECTION TO OPENINGS, ETC.

HATCHWAYS ON FREEBOARD AND SUPERSTRUCTURE DECKS.										
Description of Hatchway ... ..		21 O.T. Hatches		On Fore Dry Hold	Dk. Fore Pk.					
Dimensions of Hatchway ... ..				9'x10'	30"x30"					
COAMINGS	Height above Deck ... ..	34"		30"	6					
	Thickness { Sides ... ..	.44 ✓		.44	.40					
	{ Ends ... ..	.44		.44	.40					
	Stiffeners ... ..	-		- ✓	- ✓					
	Brackets, Stays ... ..	-		-	-					
HATCH BEAMS	Number ... ..	-		-	-					
	Spacing ... ..	-		-	-					
	Scantling and Sketch ... ..	-		-	-					
	Bearing Surface ... ..	-		-	-					
FORE AND AFTERS	Number ... ..	-		-	-					
	Spacing ... ..	-		-	-					
	Unsupported Lengths ... ..	-		-	-					
	Scantling and Sketch ... ..	-		-	-					
HATCH COVERS	Material ... ..	Steel		Steel	Steel					
	Thickness ... ..	.56		Hinged	Hinged					
	How fitted ... ..	Hinged		W.T.	W.T.					
	Bearing Surface ... ..	-		Cover	Cover					
Spacing of Cleats ... ..		14 toggles		toggles	2 toggles					
Number of Tarpaulins ... ..		-		15" Crs.	each side					
*Are wood fore and afters steel shod at all bearing surfaces? - Are battens and wedges efficient and in good condition? - Are tarpaulins in good condition and in accordance with rule requirements? - Are lashings provided in accordance with rule requirements? -										

Particulars of any special features:—

Endorsement at first survey and at surveys for renewal of Certificate:—

The fittings and appliances are in accordance with the particulars shown on this form (or as now modified) and are in good condition.



© 2020

Lloyd's Register  
Foundation