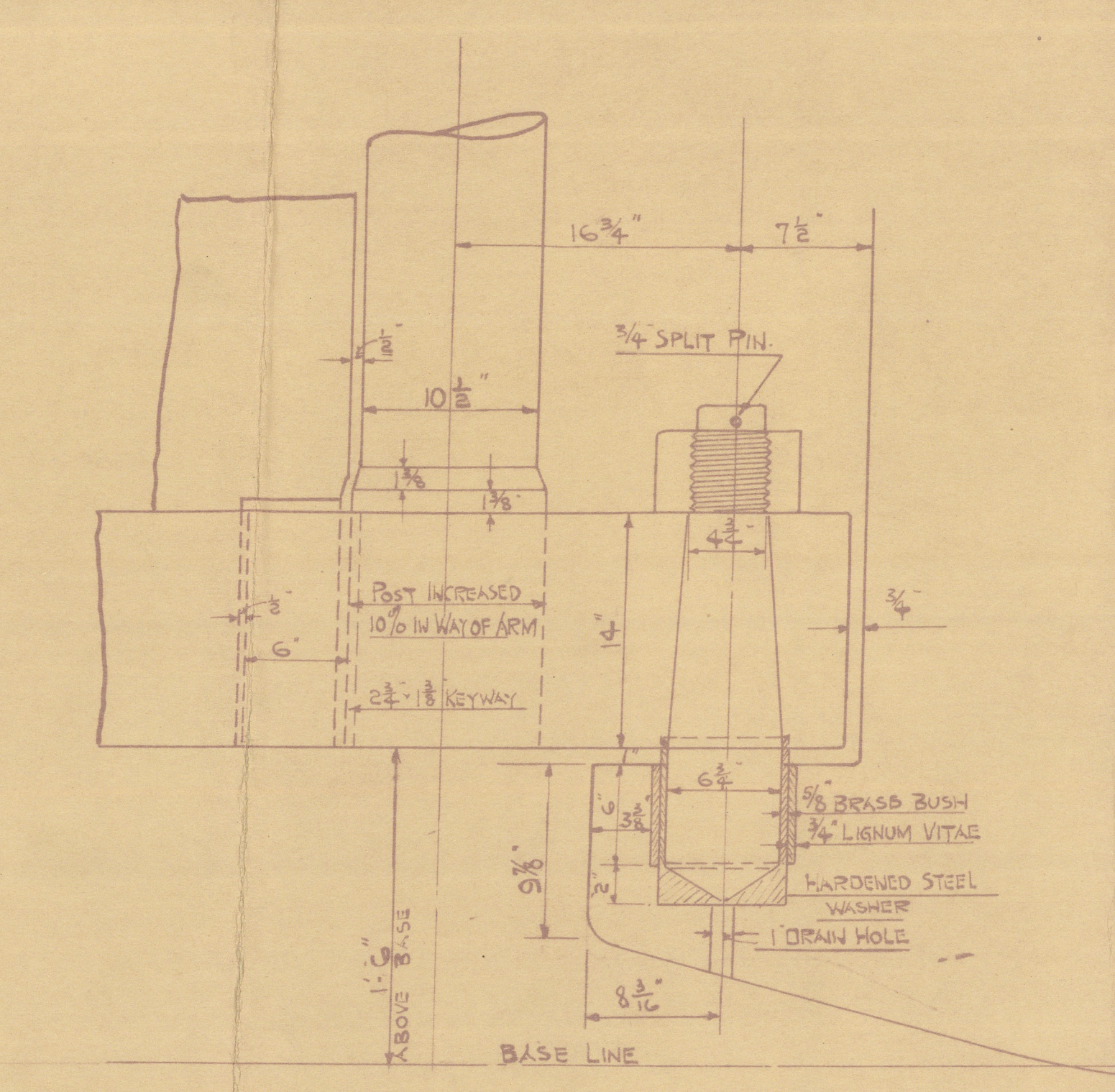
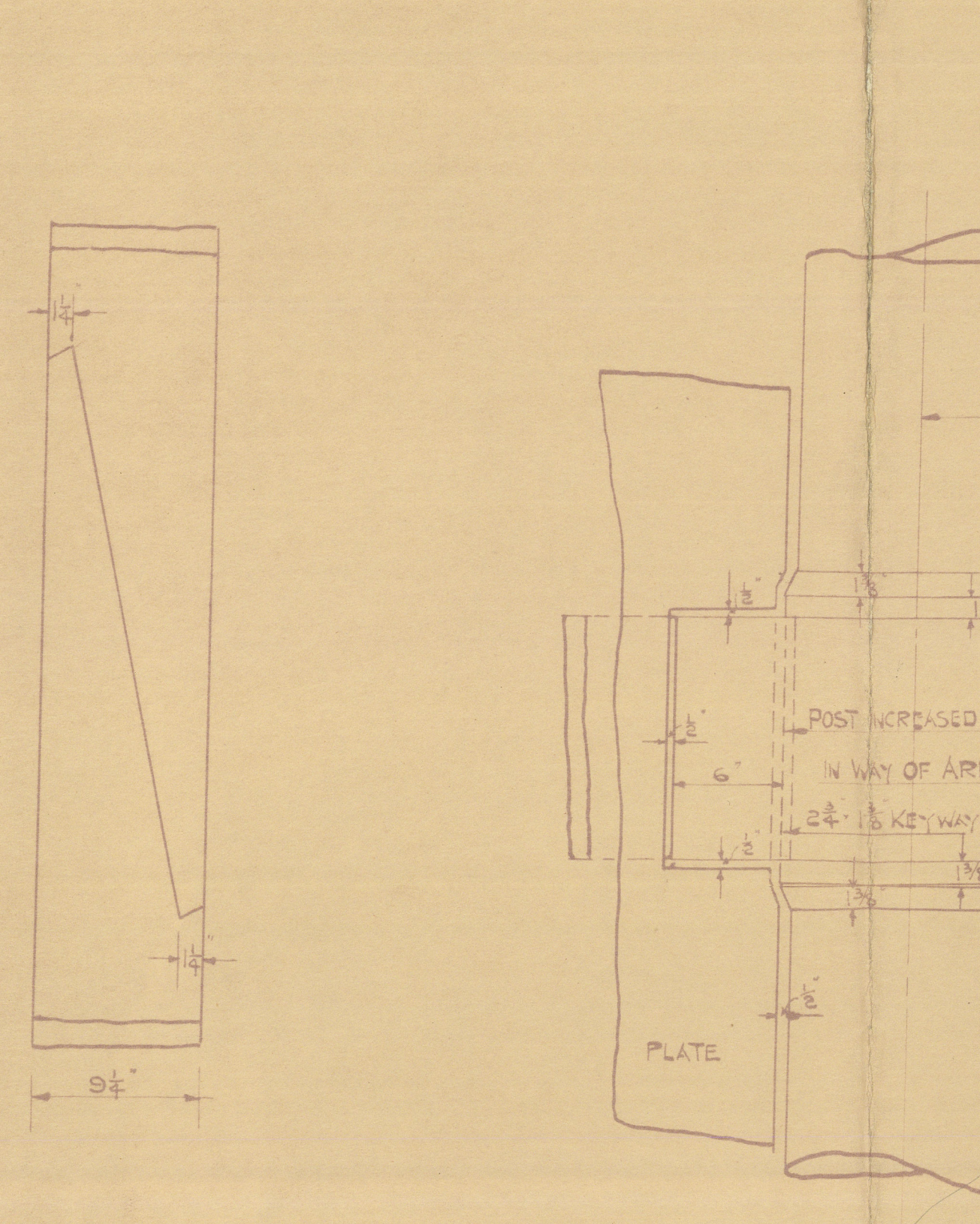


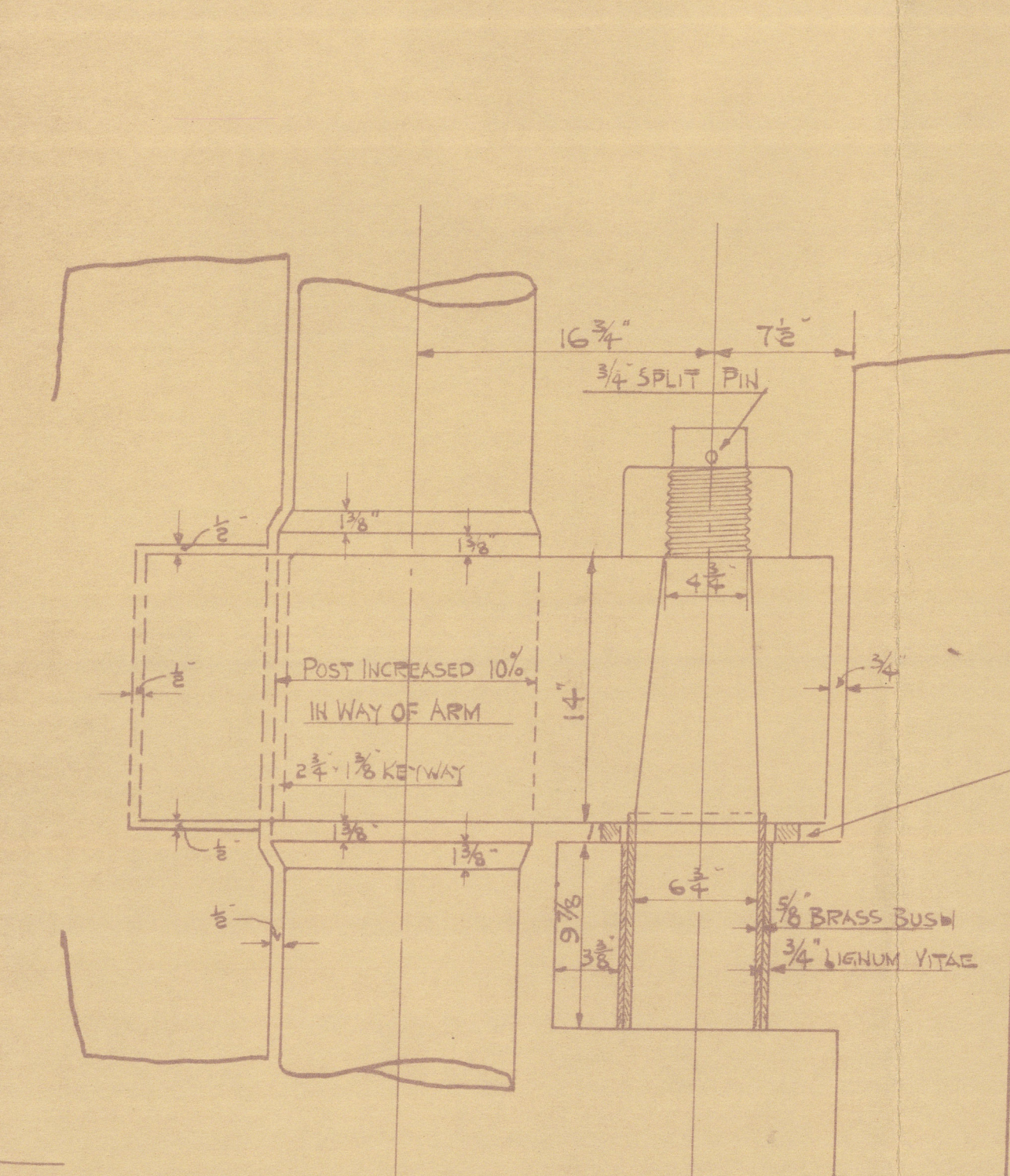
DETAIL OF SCARPH ON RUDDER POST



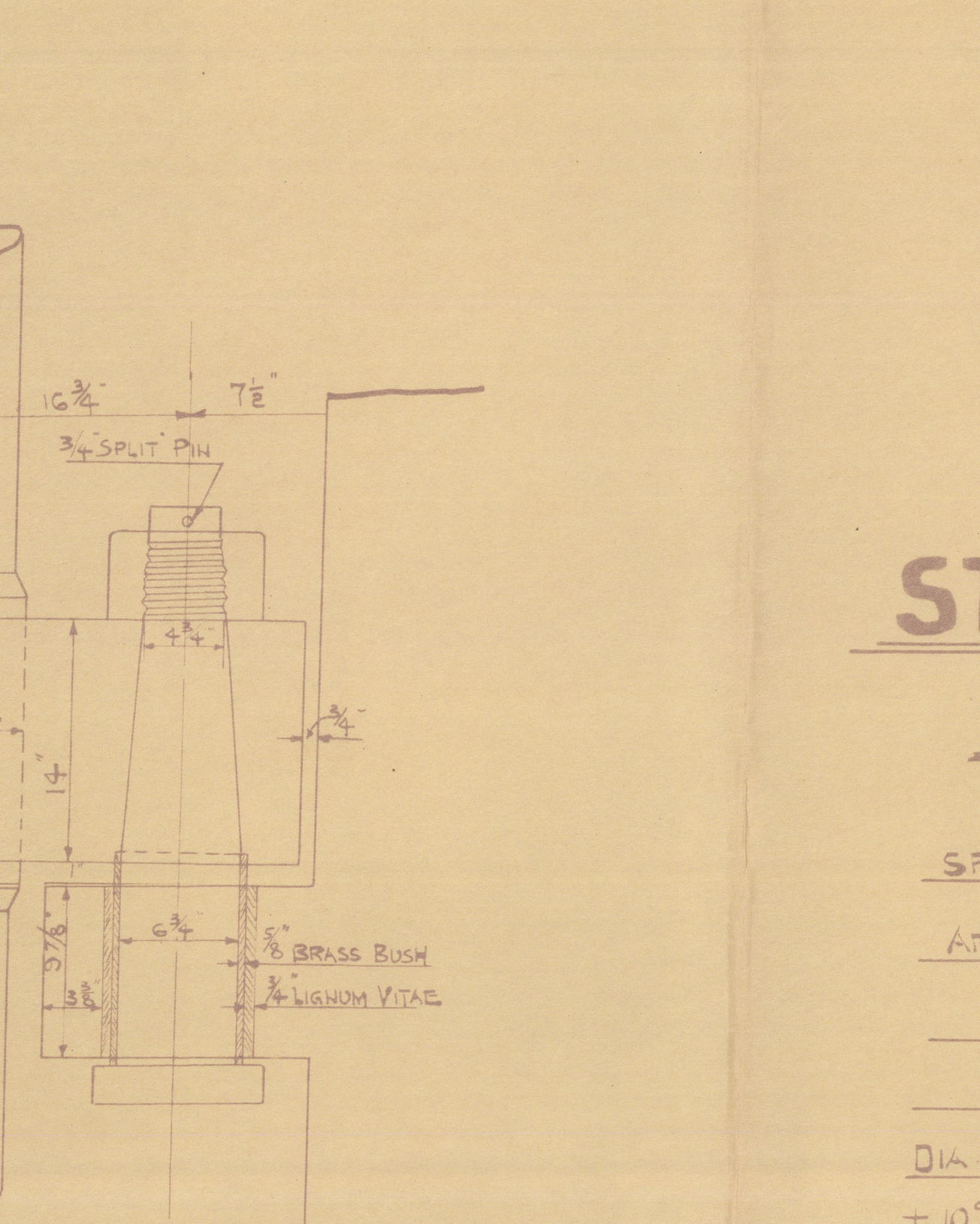
DETAIL OF SCARPH ON STERNPOST



DETAIL OF LOCKING PINTLE 'A'



DETAIL OF BOTTOM PINTLE 'D'



DETAIL OF PINTLES AT B & C

No 28 **STERNFRAME & RUDDER** SCALES 1/2\"/>

SPEED OF VESSEL	= 11 1/2 KNOTS
AREA OF RUDDER	= 174 SQ. FEET
D	= 57 1/2 FEET
A x D	= 877
DIA OF RUDDER HEAD	= 12 1/4
+ 10% FOR OIL VESSEL	= 14
+ 1/2% FOR OWNERS	= 14 1/2

ALL TO BE MADE TO LLOYD'S REQUIREMENTS AND TO BE INSPECTED & PASSED BY THEIR SURVEYORS BEFORE LEAVING YARD'S WORKS.

STERNFRAME TO BE IN TWO PARTS SCARPHED WHERE SHOWN OF MARTENS FORGED STEEL AND WITH BOLD GUDGONS BUSHED WITH LIGNUM VITAE TO TAKE THE RUDDER PINTLES.

RUDDER FRAME WITH TURNED STOCK OF STEEL DRAWN FROM THE SOLID INGOT AND ARMS OF FORGED STEEL SHOWN ON MAIN PILE IN WAY OF EACH GUDGON ON THE STERNPOST MUST HAVE ARMS TO BE COUNTERSUNK ON OUTER SIDE OF ARMS.

PINTLES TO BE OF STEEL LET IN TO RUDDER ARMS WITH A TAPER AND SECURED ON TOP WITH HEXAGONAL NUTS & SPLIT PINS. TOP PINTLE TO BE LOCKING PINTLE. SPLIT PINS TO BE FITTED TO ALL NUTS TO PREVENT THESE SLIPPING BACK. PINTLE TO HAVE A BRASS BEARING RING AS SHOWN. BEARING SUPPLIED BY CONTRACTORS. CARE TO BE TAKEN THAT CENTRE LINES OF RUDDER STOCK AND PINTLES ARE IN A PERFECTLY STRAIGHT LINE BOTH FORE & AFT AND TRANSVERSE AND THE SURFACES OF THE RUDDER ARMS ARE IN TRUE PLANE TO RECEIVE RUDDER PLATE.

CONTRACTORS TO DRILL ALL HOLES IN STERN & RUDDER FRAMES, ALL NUTS, BOLTS, SPLIT PINS, BUSHES ETC. TO BE SUPPLIED BY CONTRACTORS. ALL NECESSARY MACHINING ON STERN & RUDDER FRAMES TO BE DONE BY CONTRACTORS.

NO SHARP EDGES OR TORNINGS WHERE EXPRESSED, CORNERS TO BE ROUNDED, SCARPHS TO BE ACCURATELY FITTED & DRILLED IN POSITION.

A SEPARATE PLAN WILL BE SENT LATER SHOWING EXACT POSITION OF RIVET HOLES TO SUIT SHIP LINDINGS. SEE TAIL SHEET SECTIONS ON SEPARATE PLAN FOR CORRECT WIDTH OF STERNPOST SOLE.

APPROVED
LLOYD'S REGISTER OF SHIPPING
H. L. Ward
DATE 5.8.29

Blythwood S. B. Co. Ltd

N^o 28

Sternframe & Rudder

Motor Tanker
Laurel

GLASGOW REPORT No. 50695



© 2020

Lloyd's Register
Foundation

008122-008128-0027