

No 308.

T.S. MOTOR TANKER.

# PROFILE & DECKS AND END FRAMING.

SCALES: (PLAN) 1" = 10' 0"  
(SECTION) 1" = 10' 0"

DIMENSIONS: 335'-0" x 50'-0" x 19'-8" W.P. 0"

TO CLASS 100 A1+ (CARRYING PETROLEUM IN BULK).

SPECIAL NOTATION - LONGITUDINAL FRAMING AT BOTTOM & DECK.

Supports below windlass, winches, masts, steering gear and derrick bolls to be to designers satisfaction.

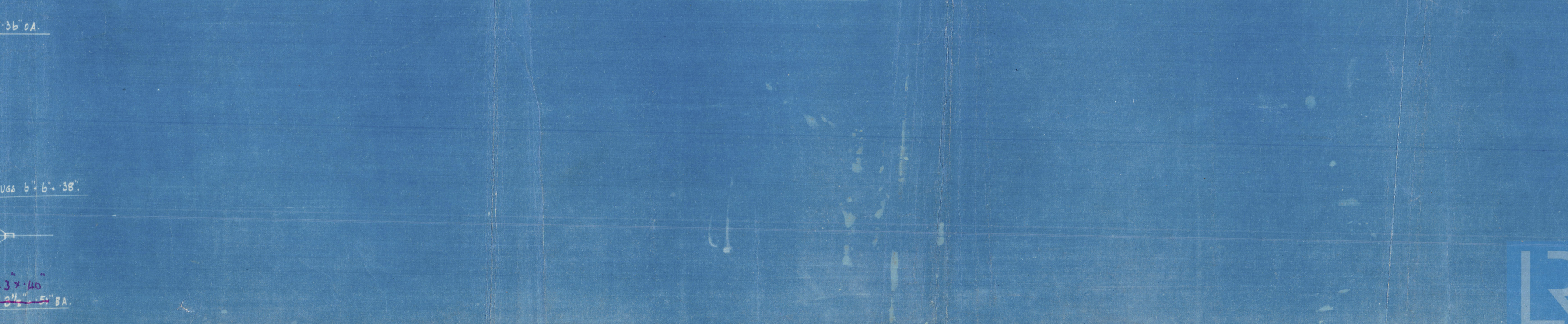
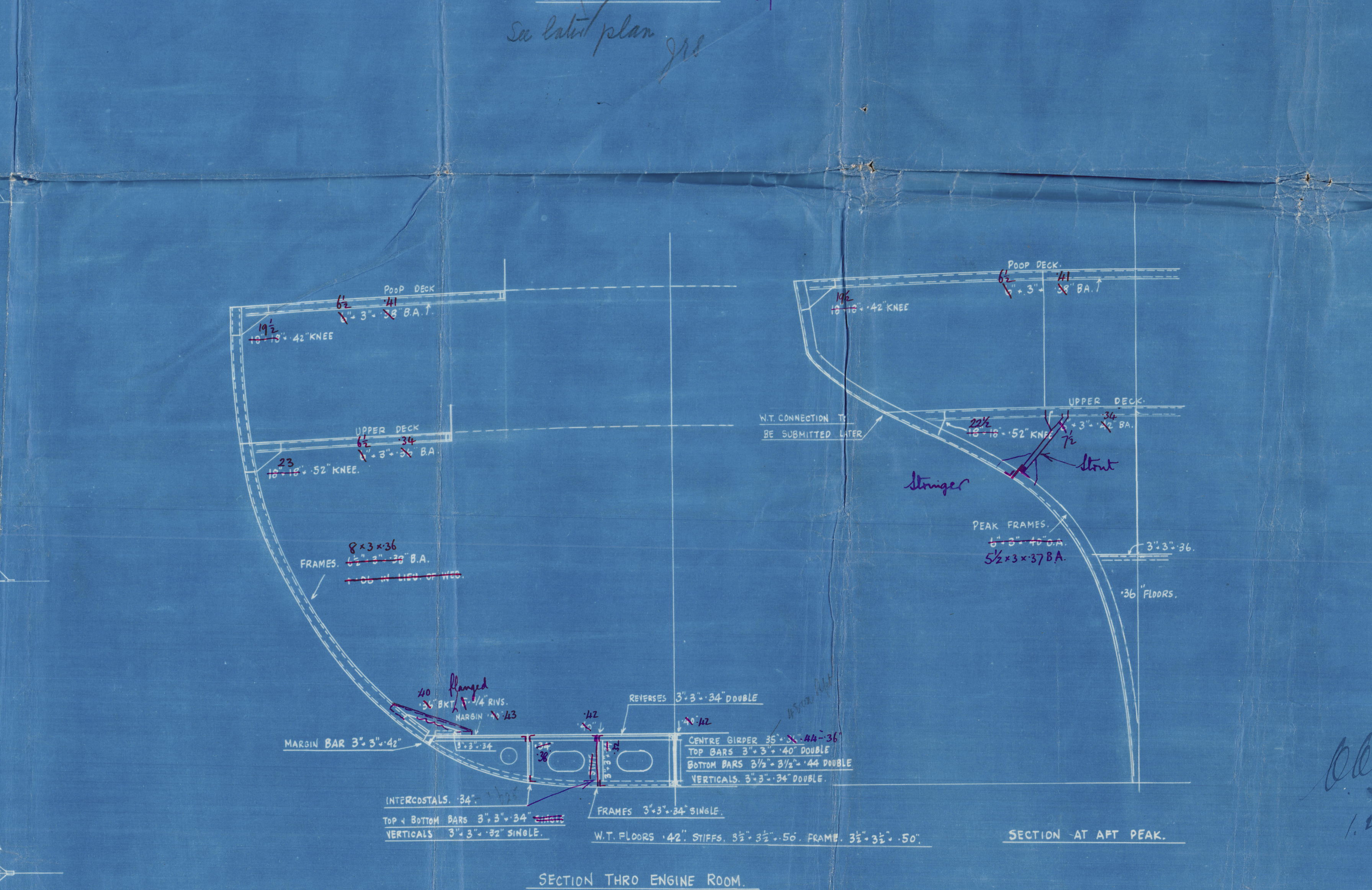
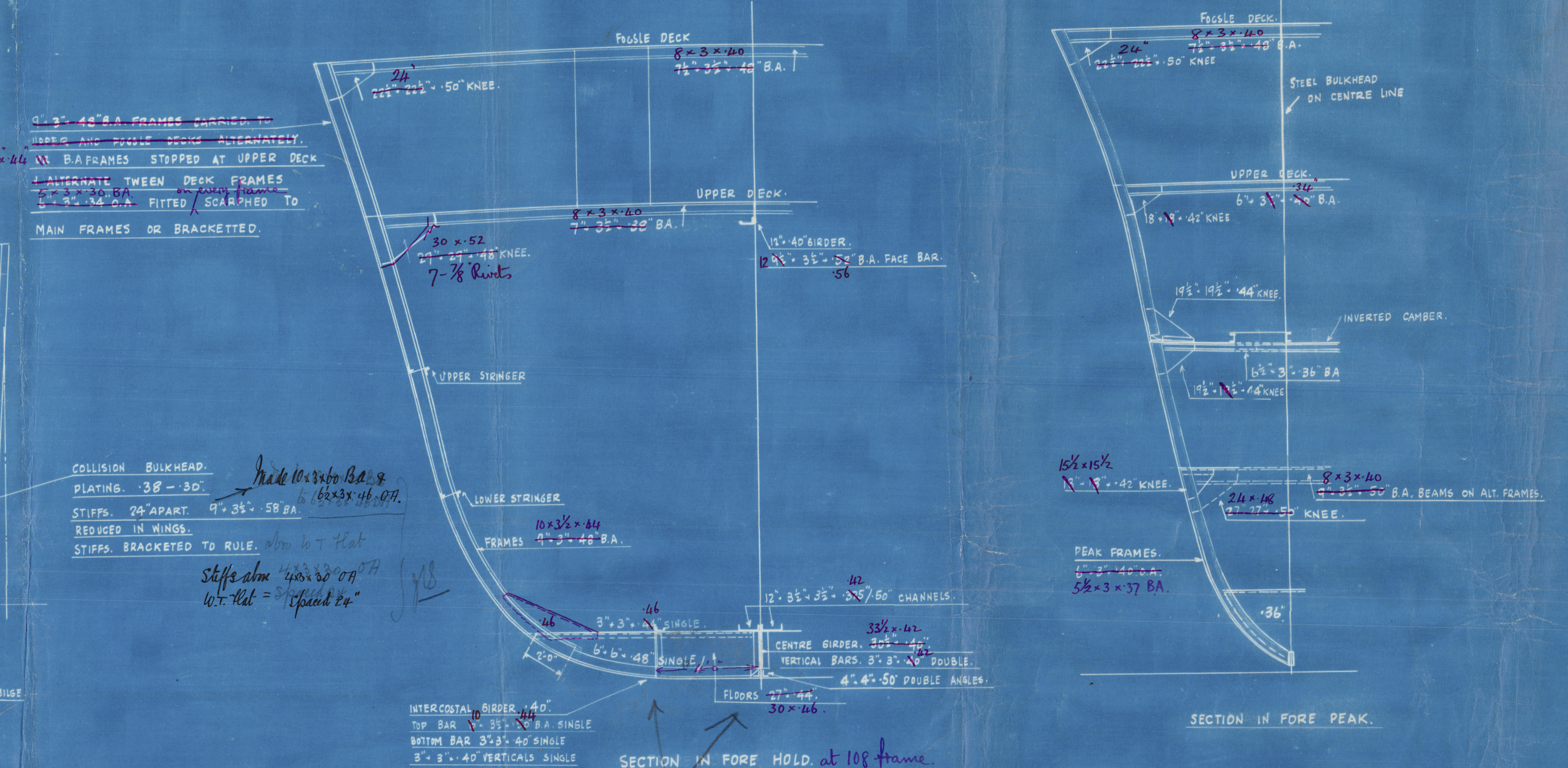
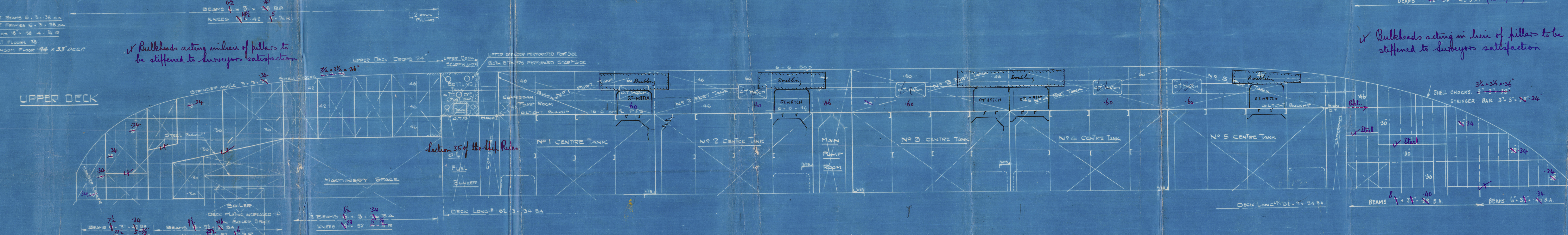
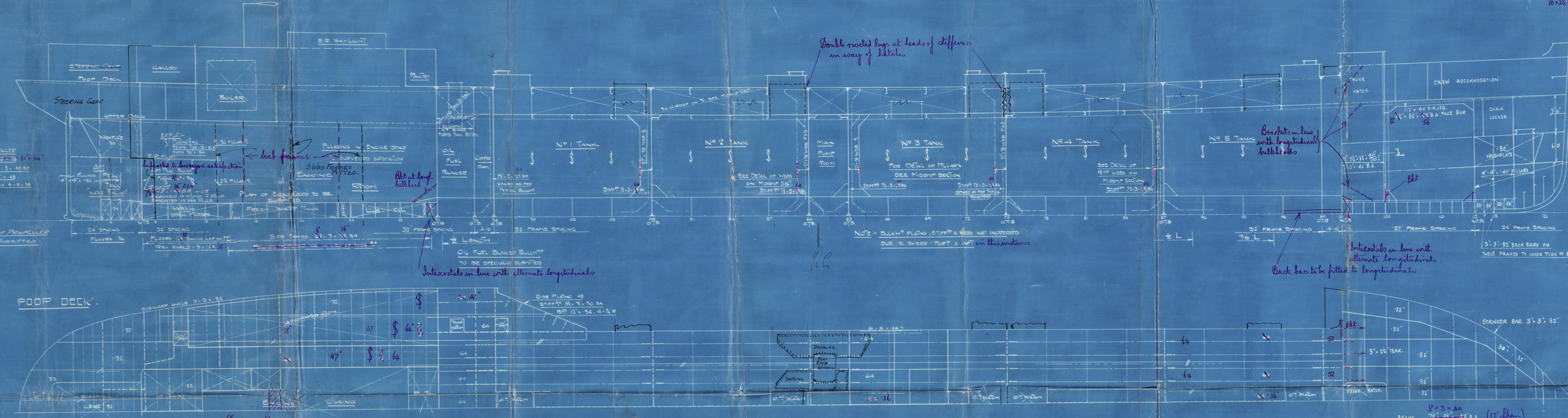
Double riveted lugs at heads of stiffeners in way of bulkheads.

Construction line with longitudinal bulkheads.

Interstices in line with ultimate longitudinal bulkheads to be fitted to longitudinal.

Bulkheads acting in lieu of pillars to be stiffened to designers satisfaction.

See Section 15 for 3 (C) for overlap of beams and beam knees.



1.4.16



Nº 308.

PROFILE, DECKS  
AND  
END FRAMING.

MESSRS THE CALEDON. S. B.  
& E. CO. LTD.

"ALETTA"  
DUN. 8594



© 2020

Lloyd's Register  
Foundation

008113-008121-0081



9800-121300-511300



© 2020

Lloyd's Register  
Foundation