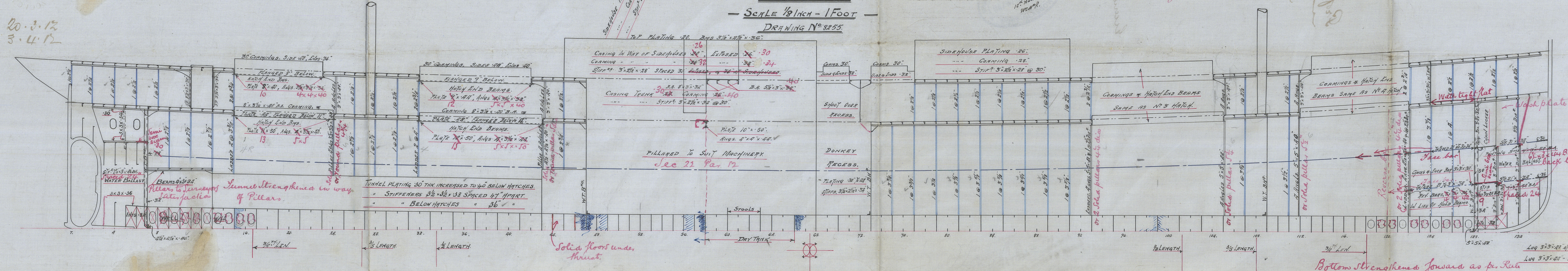
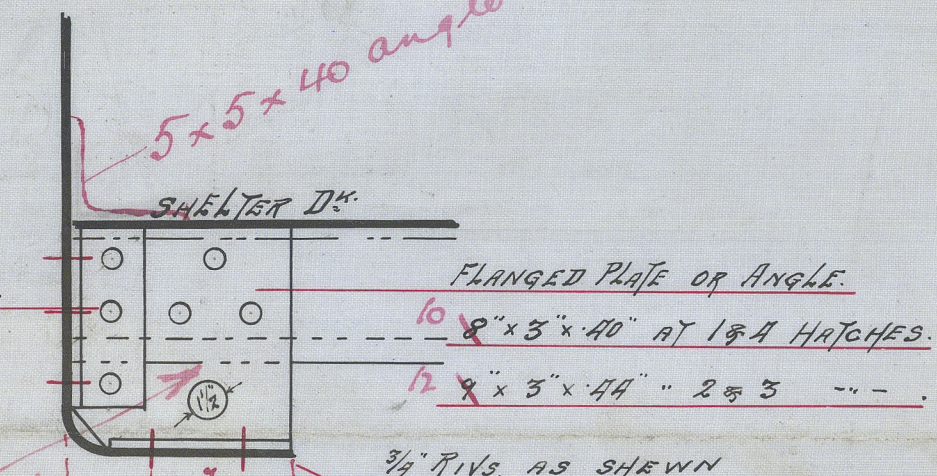


DRAWING N° 8255.

Masts Supported to Surveyors  
Satisfaction

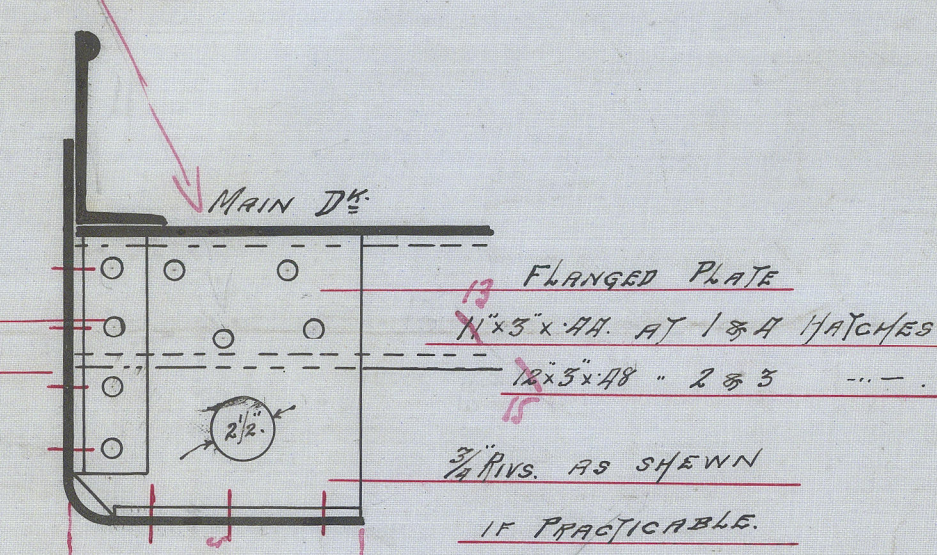


SKETCHES SHOWING CONNECTION  
OF EVERY THIRD BEAM  
TO HATCH COAMINGS.

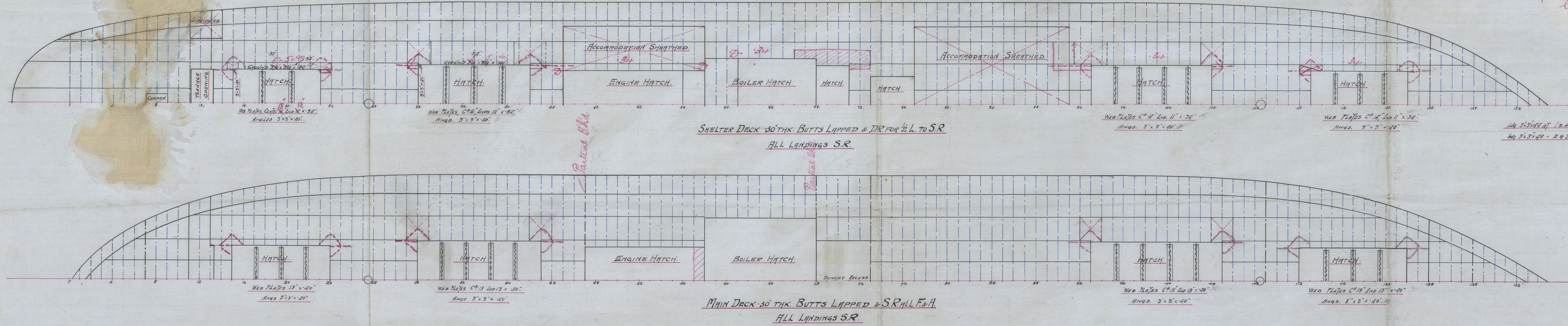


Bottom strengthened forward as per Rule  
 & to Surveyor Satisfaction

Lugs to alternat  
beams.



at  $n^{\text{th}} 2+3$   
 $13^4 @ n^{\text{th}} 1+4$



© 2021  
Lloyd's Register  
Foundation



S. S. N<sup>o</sup> 253.

Profile & Deck.

Murdoch & Murray. Ltd

Goncalo Velho  
-ed

of Linnere

Greenock Report. No. 16404



© 2021

Lloyd's Register  
Foundation