





# PARTICULARS OF PROTECTION TO OPENINGS, ETC.

HATCHWAYS ON FREEBOARD AND SUPERSTRUCTURE DECKS									
Description of Hatchway		1	2	2 coal Hatches					
Dimensions of Hatchway		21' x 10' 11"	21' x 10' 11"	23' x 24'					
COAMINGS	Height above Deck	38"	32"	26"					
	Thickness Sides	78"	77"	14"					
	Stiffeners all round	3" x 3" angle	2" x 3" angle	—					
	Brackets, Stays	—	—	—					
	Number	3	3	—					
HATCH BEAMS	Spacing	63"	63"	—					
	Scantling and Sketch	2 off. d = 13"	1 off. d = 36 1/2"	—					
	Bearing Surface	2 1/2"	2 1/2"	—					
	Number	—	—	—					
	Spacing	—	—	—					
FORE AND AFTERS	Unsupported Lengths	—	—	—					
	Scantling* and Sketch	—	—	—					
	Bearing Surface	—	—	—					
	Material	Wood	Wood	Wood					
	Thickness	2"	2"	2"					
HATCH COVERS	How fitted	Lengthwise	Lengthwise	Lengthwise					
	Bearing Surface	1 1/2" x 30"	1 1/2" x 30"	1 1/2" x 30"					
	Spacing of Cleats	24"	24"	14 1/2"					
Number of Tarpaulins		2	2	2					

\*Are wood fore and afters steel shod at all bearing surfaces? Yes  
 Are battens and wedges efficient and in good condition? Yes  
 Are tarpaulins in good condition and in accordance with rule requirements? Yes  
 Are lashings provided in accordance with rule requirements? Yes

Particulars of fiddle, funnel and ventilator coamings:—

No ordinary fiddle grating, but 1 hatch on Bridge dk: 13" x 13 1/2" 1 1/2" angle coaming, steel hinged door + lock outside.

Vents. 1 @ 10" φ x 78" over Bt. dk. x 1/8" } Note. E.R. & B.R. are all one and the same.  
 2 @ 11" φ x 104" " " " x 1/8".

Particulars of Flush Bunker Scuttles:— None.

Particulars of Companionways:— Bridge Deck. 1 steel hinged door 22 1/2" x 53 1/2". Sill 9 1/2". handle both sides. - to Accom-

Particulars of Ventilators in exposed positions on freeboard and superstructure decks:—

Fore. 4 @ 6" φ x 7" x 1/4" Mushroom screw cap type. Bridge dk. 6 @ 3" φ x 6". Goose-neck.

1 @ 11" φ x 100" x 3/16".

Main deck. 1 @ 12" φ x 52 1/2" x 3/16".

Bridge Deck. 4 @ 6" φ x 7" x 1/4" Mushroom screw cap type. except mushroom type.

1 @ 10" φ x 7" x 1/4".

Particulars of Air Pipes in exposed positions on freeboard, raised quarter, or superstructure decks:—

Main deck. 2 @ 1 1/2" φ x 33". Goose-neck.

2 @ 1 1/2" φ x 21".

Bridge Deck. 2 @ 2" φ x 4".

All with wood plugs for closing.

Particulars of Gangway Cargo and Coaling Ports:— None.

Particulars of Scuppers and Sanitary Discharge Pipes —

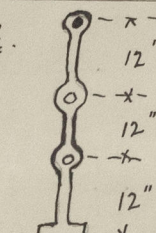
All sanitary discharge pipes led overboard above freeboard deck.

Particulars of Side Scuttles:—

All above freeboard deck, + fitted with efficient, permanently attached deadlights.

Particulars of Guard Rails:—

Forecastle.



Stanchions 1 1/2" φ, spaced 4' apart.  
 Rods thro' stanchions 7/8" φ.

Particulars of Gangways, Lifelines, etc.:—

Manilla ropes run from Forecastle to Bridge + secured as convenient.

## Particulars of Freeing Arrangements.

	Length of Bulwark	Height of Bulwark	Size of Freeing Ports	Number each side	Area each side	Rule area each side
After Well						
Forward Well	63'-6"	39 1/2"	3 off. 14" x 20" 2 off. 14" x 17 1/4"	5	7.56 sq ft.	

State position of each freeing port (F. and A. position and height above deck edge) } After Well:—  
 Forward Well:— 2'-0", 15'-6", 26'-6", 37'-6", 54' from Bridge port bulkhead.  
 State whether the freeing ports are fitted with shutters, bars, or rails, and give particulars of such:— 3 off. 12" x 2 off. 11 1/2" over deck.  
 Additional area where sheer is less than standard. Shutters. 1 rail.

## Particulars of Superstructures, Trunks, Casings, Deckhouses.

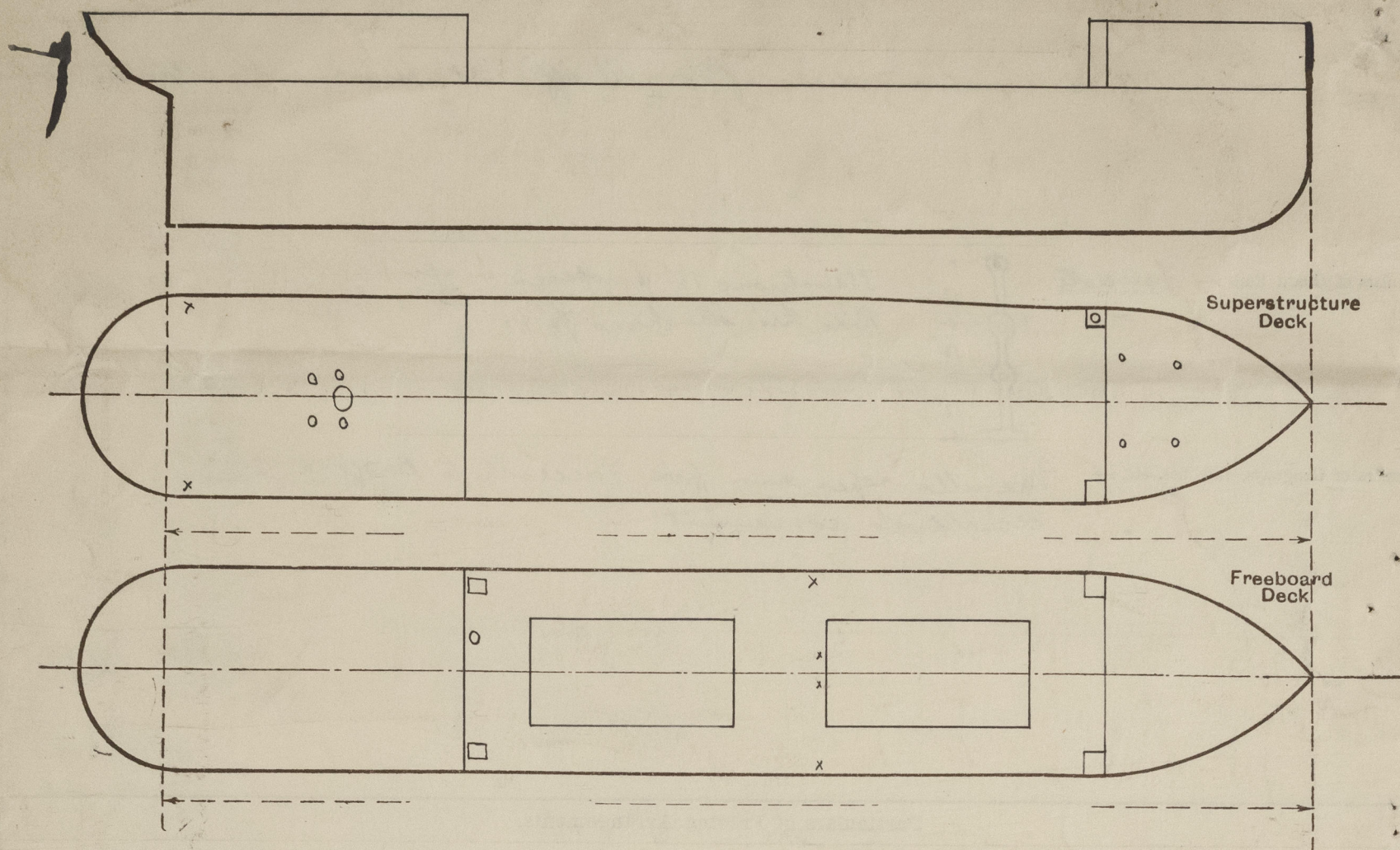
	Coaming	Plating	Stiffeners	Spacing	End Attachments of Stiffeners	Size of Openings	Height of Sills	Height of Casings
Poop Bulkhead								
Raised Quarter Deck Bulkhead								
Bridge, After Bulkhead								
Bridge, Forward Bulkhead		1/4"	3" x 3" x 30 angle 5 1/2" B. plate	26"	Brackets top + bottom	56" x 23"	18"	80"
Forecastle Bulkhead	19"	1/4"	2 1/2" x 2 1/2" angle	26"	—	55 1/2" x 22 1/2"	19 1/2"	7'-0"
Trunk, Aft								
Trunk, Forward								
Exposed Machinery Casings on Freeboard or Raised Quarter Decks								
Exposed Machinery Casings on Superstructure Decks								
Machinery Casings within Superstructures not fitted with Class I Closing Appliances								
Deckhouses on Flush Deck Ships								

## Particulars of Closing Appliances (state if capable of being manipulated from both sides).

Poop Bulkhead	
Raised Quarter Deck Bulkhead	
Bridge, After Bulkhead	
Bridge, Forward Bulkhead	1 steel door, divided horizontally, with bolt + handle operated from both sides.
Forecastle Bulkhead	1 steel hinged door in 2 halves, " " " " " " " "
Exposed Machinery Casings on Freeboard or Raised Quarter Decks	
Exposed Machinery Casings on Superstructure Decks	
Machinery Casings within Superstructures not fitted with Class I Closing Appliances	
Deckhouses on Flush Deck Ships	



Superstructure bulkheads, trunks, deckhouses, casings, cargo and coaling hatchways, extent and thickness of sheathing on the freeboard deck, gangway, cargo and coaling ports, and any other openings, etc., which would affect the seaworthiness of the ship are to be shewn on the following sketches:—



State any special features in the construction of the ship:— *No timber freeboard required.*

Builder's name and yard number *Lödöse Varf, Aktiebolaget. Lödöse, N<sup>o</sup> Gothenburg. N<sup>o</sup> 19.*

Names of sister ships

Owners *Yngre Fahländer. Stockholm.*

Fee *Kr. 100:—*

Received by me



© 2020

Lloyd's Register  
Foundation