

SSN70 & 71

CAST STEEL STERNPOST AND RUDDER

SCALE $\frac{1}{20}$ OF FULL SIZE - DETAILS $\frac{1}{5}$

10.13.

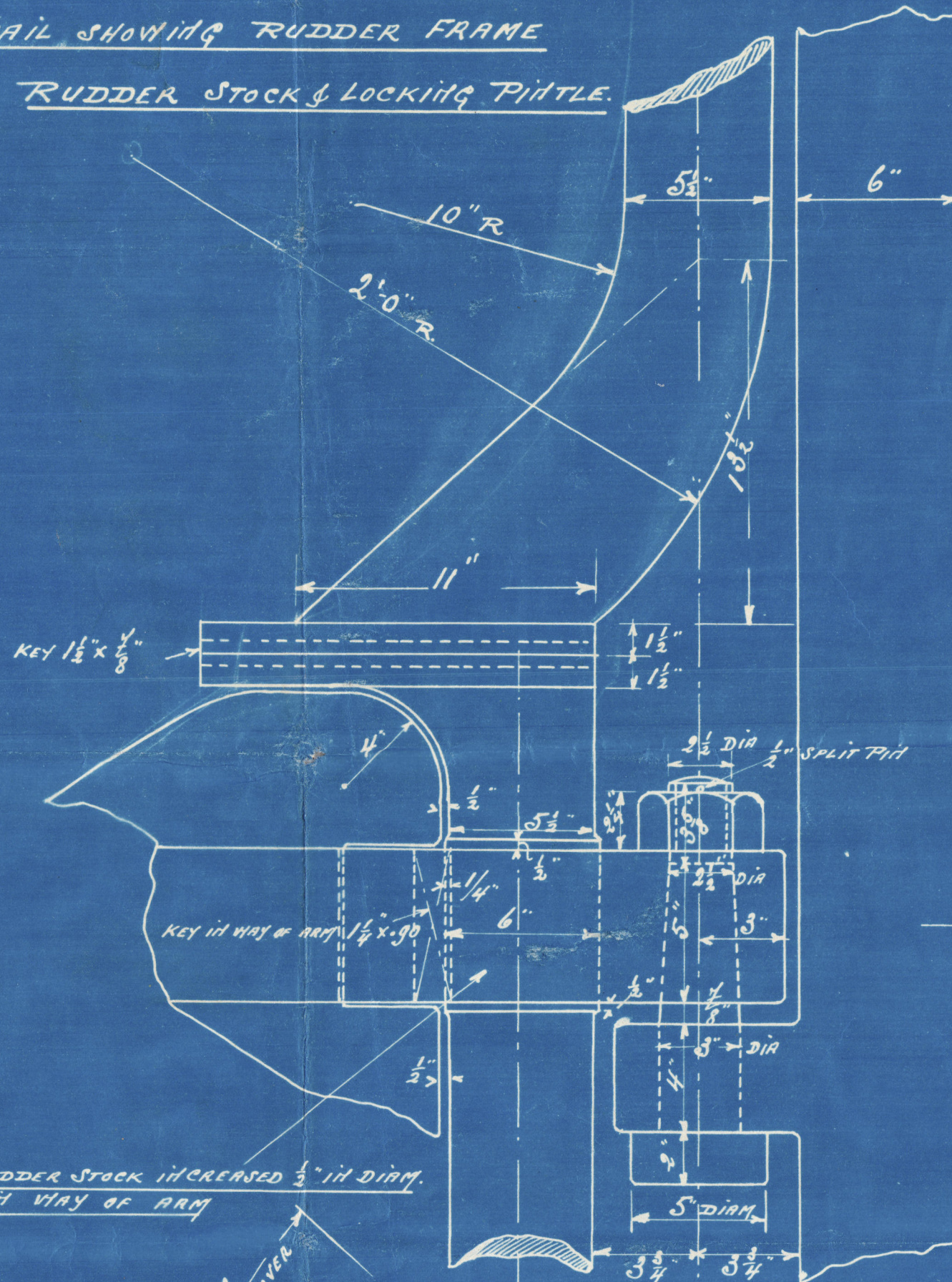
MATERIAL: CAST STEEL TO PASS ENGLISH LLOYD TEST WITH CERTIFICATE.

HORIZONTAL DISTANCE IN FEET OF ITS CENTRE OF GRAVITY ABOARD THE CENTRE LINE OF THE PINTLES 2.20.

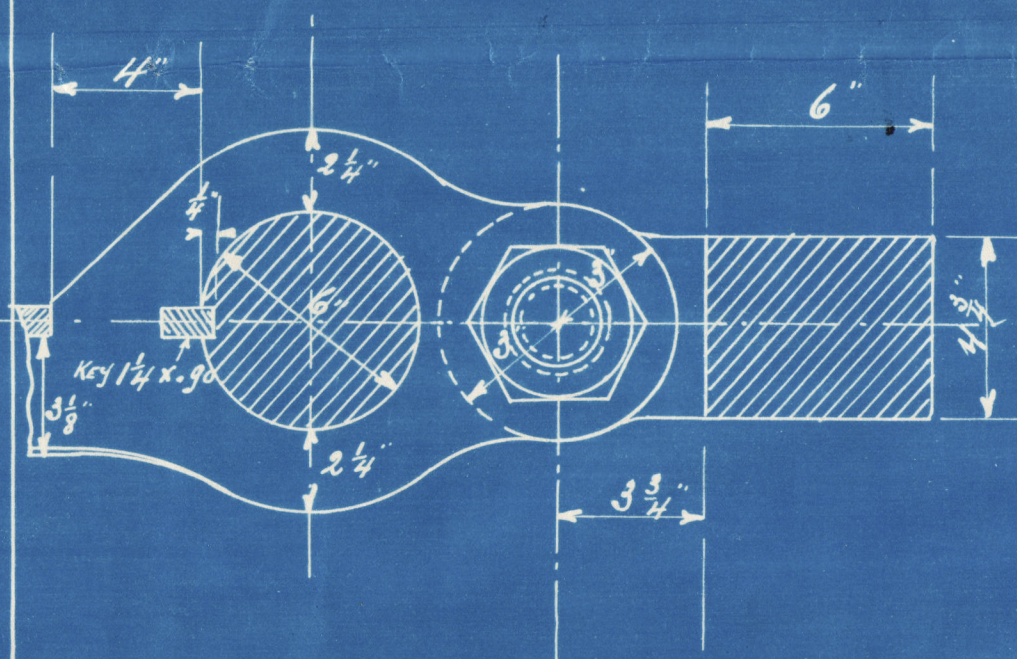
TOTAL RUDDER AREA ABOARD THE CENTRE LINE OF THE PINTLES IN SQUARE FEET = 58.38
SPEED $8\frac{3}{4}$ KNOTS. - $A \times D = 128,436$

DETAIL SHOWING RUDDER FRAME

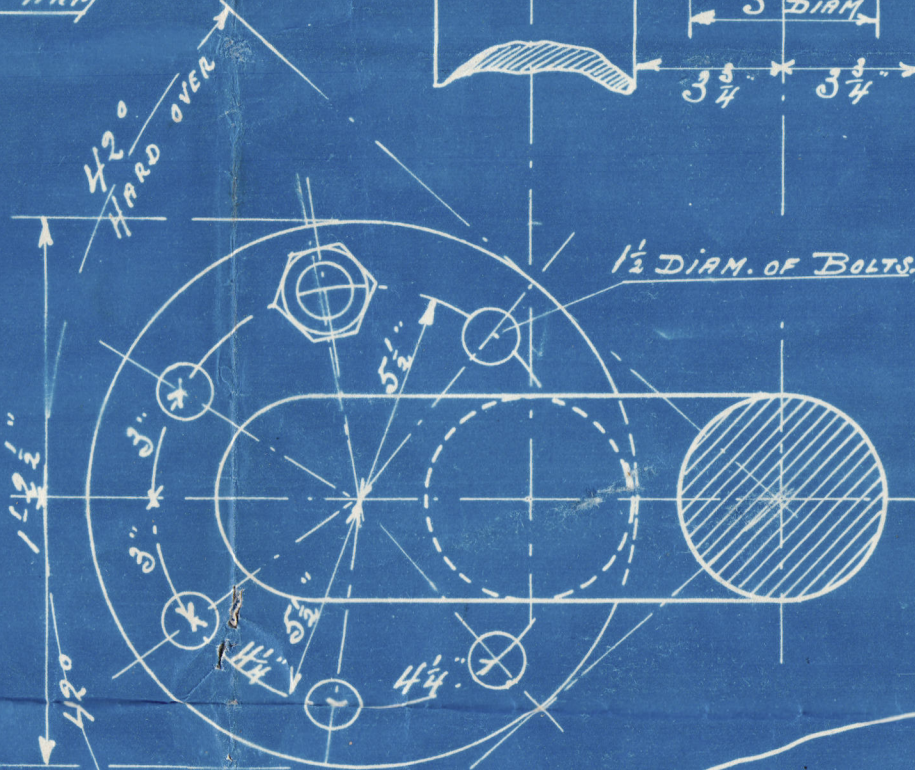
RUDDER STOCK & LOCKING PINTLE.



DETAIL OF ARM

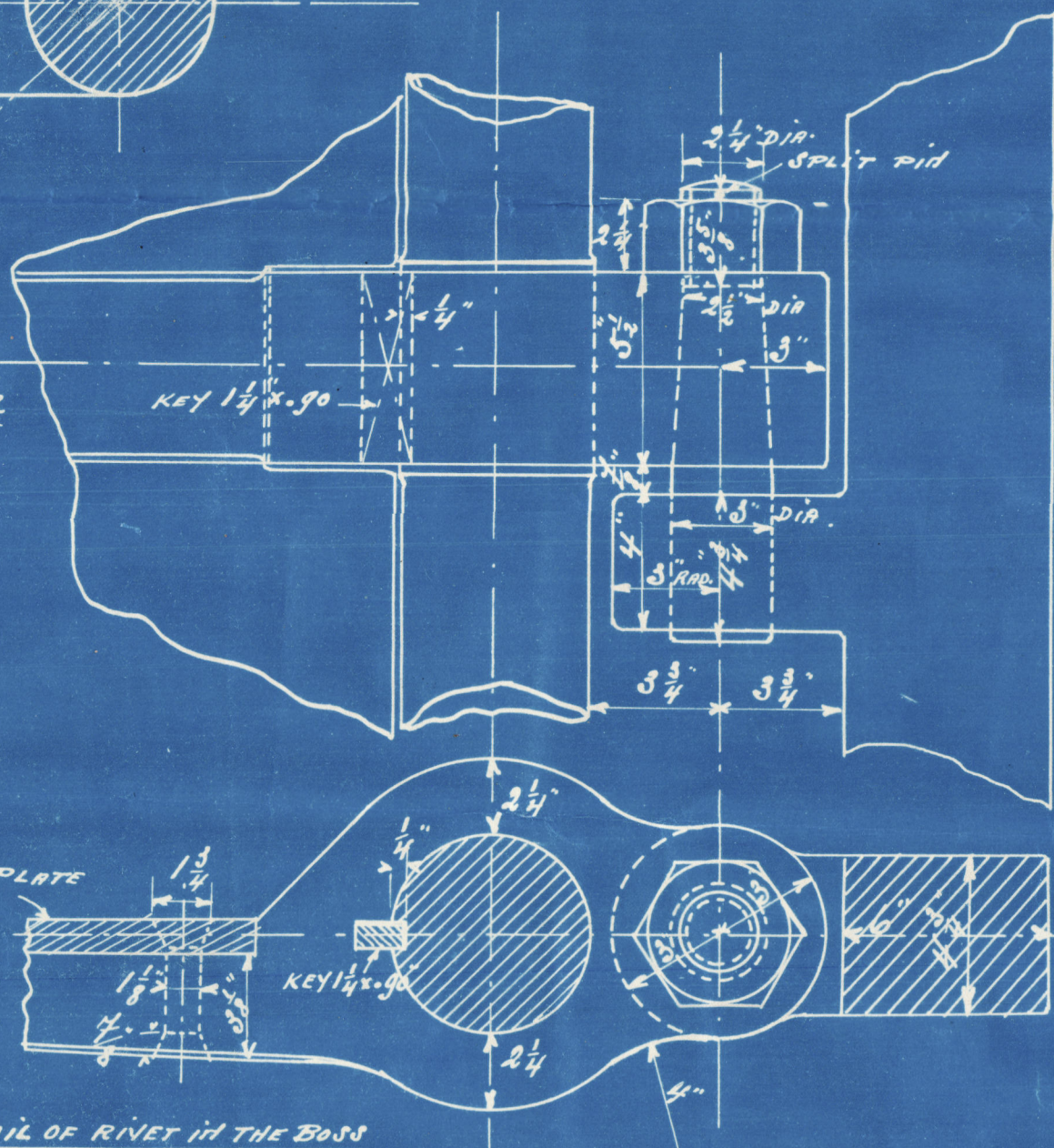


RUDDER STOCK INCREASED $\frac{1}{2}$ " IN DIAM. IN WAY OF ARM

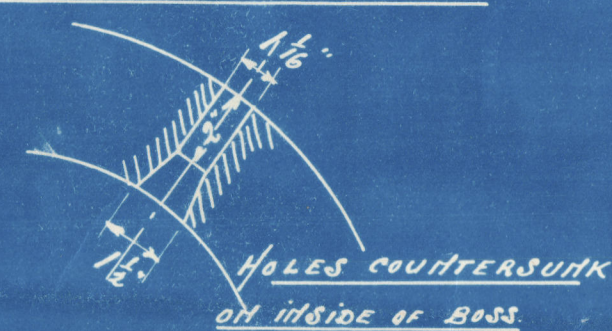


PLAN OF COUPLING
NOTE: COUPLINGS TO CLEAR EACH OTHER WHEN HARD OVER IN OPPOSITE DIRECTIONS.

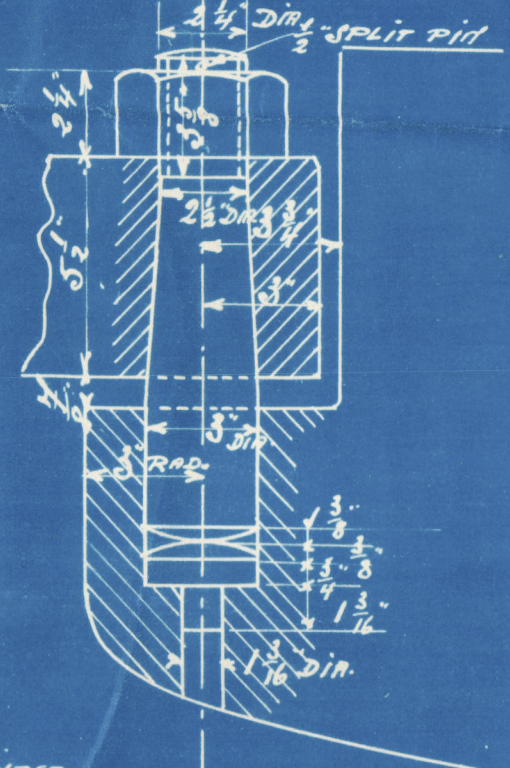
DETAIL OF ARM AT ORDINARY PINTLE



DETAIL OF RIVET IN THE BOSS



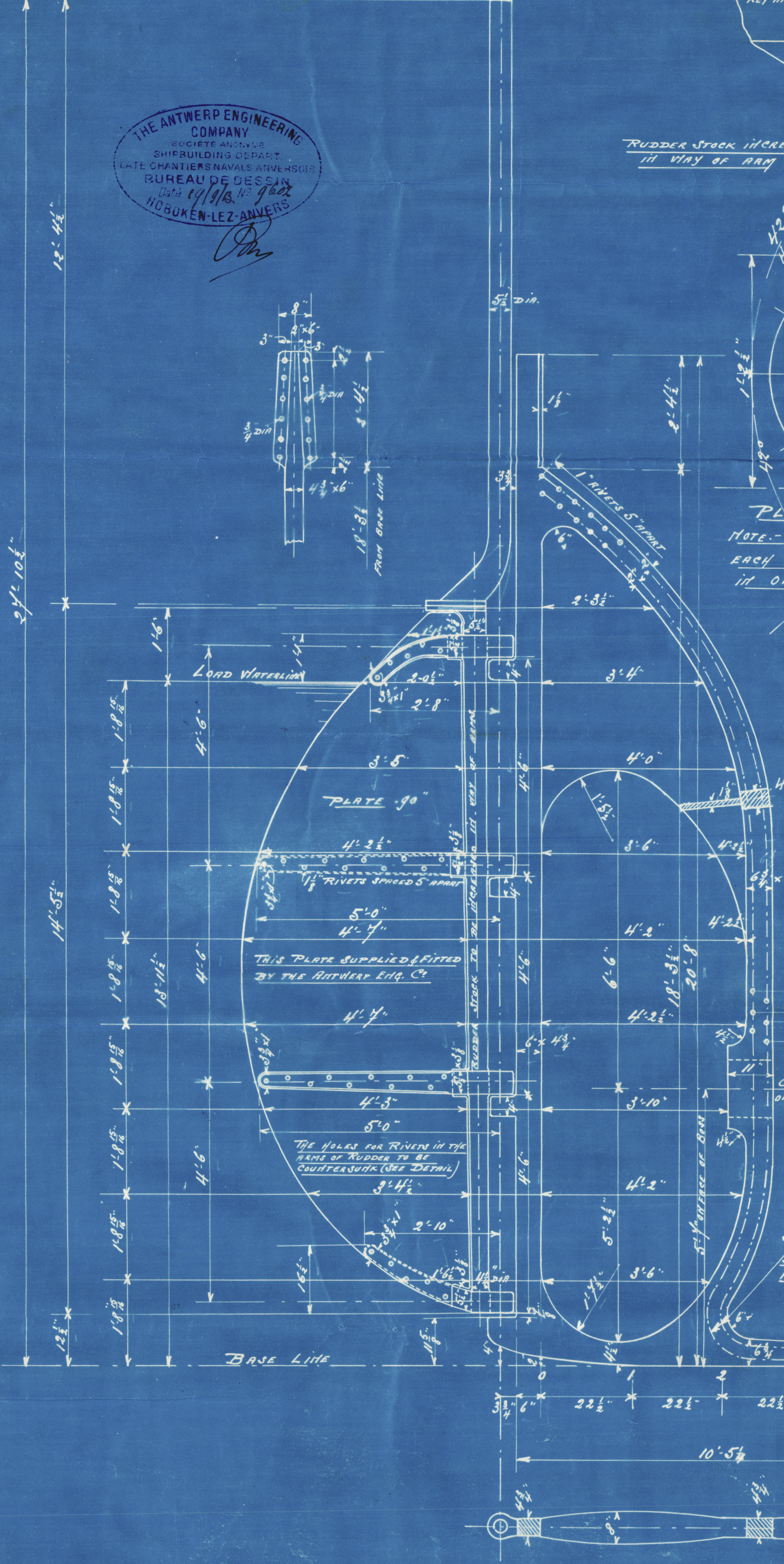
DETAIL OF HEEL PINTLE



GRADUALLY SLIGHTLY ROUNDED CORNER FOR 3'-0" FROM END.

C.B.
3.10.13.

THE ANTWERP ENGINEERING COMPANY
SOCIÉTÉ ANONYME
SHIPBUILDING DEPARTMENT
LATE CHANTIERS NAVALS ANVERSOIS
BUREAU DE DESSIN
Date 19/9/13. No 9000
HOBOKEN-LEZ-ANVERS

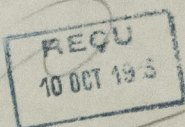


© 2021 Lloyd's Register Foundation

Antwerp Eng. Co.

S. S. Nos 70 and 71.

Stemframe & Rudder.



* "Tyton"
ex "
70. ss. "Valborg"
ant. 107912

71. ss. "Ysa"
Ant. 10833

M. J. J.

Enc

Stylin

Shipbuilding Depart., la

ANTWERP

SOC

THE ANTWERP ENGINEERING COMPANY

SOCIÉTÉ ANONYME

Shipbuilding Depart., late Chantiers Navals Anversois

HOBOKEN-lez-Anvers.

Enclosure for

M. J. J. Stylin

