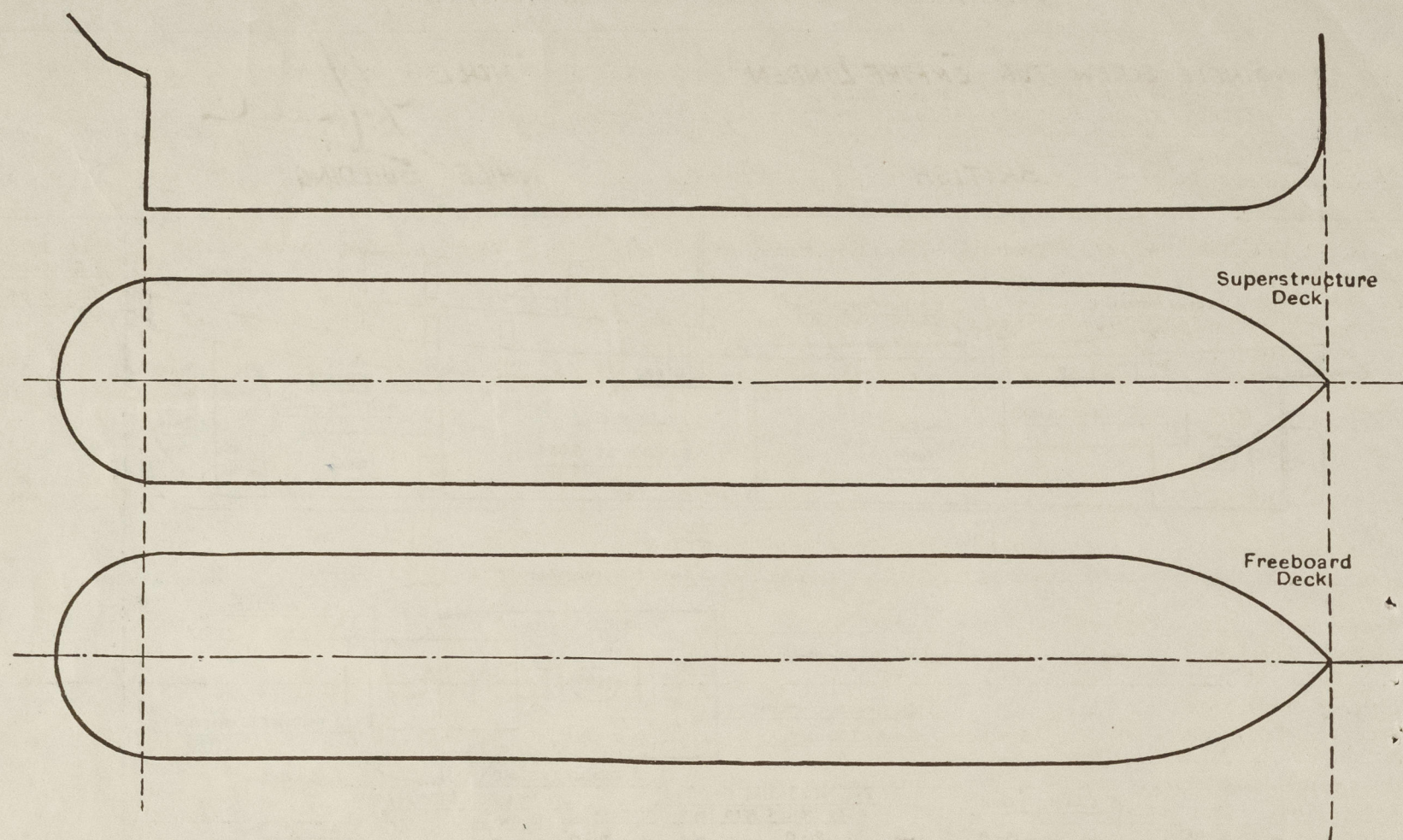


PARTICULARS OF PROTECTION TO OPENINGS, ETC.

The following diagrams should be used to indicate the positions of cargo and coaling hatchways, gangway, cargo and coaling ports, ventilators, companionways, etc., which would affect the seaworthiness of the ship:—



Particulars of fiddle, funnel and ventilator coamings, engine room skylight and other openings in machinery casing tops and their means of closing :—

AIR HATCH AT CENTRE, AFT OF FUNNEL $1'10" \times 48"$ FITTED WITH GRATING AND HINGED STEEL COVER .26 THICK WITH SECURING ARRANGEMENTS
CASING TOP PLATED OVER .26 THICK. ✓

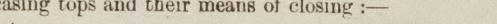
FUNNEL $7'0" \times 6'0" \times .25$ THICK SECURED TO CASING BY RIVETED ANGLE. ✓

2 STAKEHOLD COWL VENTILATORS 24 DIA. ✓

VALVE HATCH $4'3" \times 3'0"$ WIDE .30 THICK, FITTED WITH HINGED STEEL COVER .25 THICK WITH SECURING ARRANGEMENT. ✓

E.R. SKYLIGHT OF STEEL, STRONGLY CONSTRUCTED WITH STEEL HINGED FLAPS AND QUADRANT SECURING ARRANGEMENTS. ✓

NO LIGHTS IN E.R. SKYLIGHT. ✓



Particulars of Flush Bunker Scuttles:—

ON UPPER DECK { 1 TO FORE PEAK } MANHOLES 21"x15" WITH STEEL PLATE COVERS 30 PLATE
 { 1 TO AFTER PEAK } AND 5/8" BOLTS SPACED 3 1/4" APART (NO COAMINGS). ✓

ON UPPER DECK TO BUNKER 3 PORT } WOOLLONS N°2 PATENT SCUTTLES 21" DIA ✓
 3 STAR^D } SCREW JOINTED AND FITTED WITH CHAIN ATTACHMENTS. ✓

Particulars of Companionways:— CREWS COMPANION ON UPPER DECK OF STEEL, WITH DOUBLE STEEL DOORS 26 THICK HAVING SPRING LOCK AND HANDLES BOTH SIDES, DOOR SILLS 15". OFFICERS ENTRANCE BY STEEL DOOR IN STARB SIDE OF DECKHOUSE FOR'D. E.R. ENTRANCE ON STARB SIDE OF E.R. SKYLIGHT HAVING DOUBLE STEEL DOORS 30 THICK WITH SPRING LOCK AND HANDLES BOTH SIDES, DOOR SILLS 15".

Particulars of Ventilators in exposed positions on freeboard and superstructure decks :-

1 COWL VENTILATOR 8" DIA AT PORT AND STARBOARD SIDES OF CREWS COMPANION ON SKYLIGHT TOP CORNING 1'-10" HIGH ABOVE SKYLIGHT 1" " " " ON TOP OF SKYLIGHT FORD TO SALOON CORNING 1'-8" HIGH ABOVE SKYLIGHT x 30" THICK. TO CAPTAIN AND CHIEF ENGINE 1 GOOSENECK 5" DIA (P&S) 1'-8" TO MOUTH PROTECTED BY STEEL BULWARK ON UPPER DECK. TO CREWS ACCOMMODATION 1-5" GOOSENECK (P&S) 1'-9" TO MOUTH PROTECTED BY STEEL BULWARK ON UPPER DECK. TO W.C'S 2-5" GOOSENECKS ON BRIDGE DECK 8 1/2" TO MOUTH. TO LAMPROOM, WASHPLACE, DRYING ROOM AND STORE 4-3" DIA GOOSENECKS ON BRIDGE DECK 5" TO MOUTHS. TO GALLEY AND OFFICERS CABIN 2-5" DIA GOOSENECKS ON BRIDGE DECK 8" TO MOUTHS. TO WIRELESS ROOM 1-6" GALV'D IRON MUSHROOM VENT ON HOUSE TOP. TO GALLEY 1-6" COWL VENTILATOR, CORNING 18" HIGH x 25" THICK ON BRIDGE DECK. TO E.R. ONE 8" DIA COWL VENTILATOR AT PORT AND STARBOARD SIDES OF CASING ON UPPER DECK CORNING 2'-10 1/2" ABOVE UPPER DECK x 30" THICK. TO STORE BELOW UPPER DECK FORD 1-2" DIA GOOSENECK ON PORT SIDE, ON UPPER DECK 24" TO MOUTH PROTECTED BY STEEL BULWARK. TO ACCOMMODATION BELOW UPPER DECK FORD 1-6" DIA COWL VENTILATOR PORT SIDE, CORNING 2'-9" HIGH ABOVE UPPER DECK x 30" THICK.

No VENTILATORS FITTED TO BUNKERS.

WOOD PLUGS CANVAS COVERS AND GAUZES HAVE BEEN SUPPLIED.

Particulars of Air Pipes in exposed positions on freeboard, raised quarter, or superstructure decks :—

TO FORE PEAK TANK	3" DIA GOOSENECK WELDED TO SAMSON POST PROTECTED BY BOWCHOCK	
TO AFTER PEAK TANK	" " ON UPPER DECK 16" TO MOUTH PROTECTED BY STEEL BULWARK.	
ON UPPER DECK FORD TO F.W.-TANK AIR & FILLING (PYS)	2 1/2" DIA GOOSENECK 18 1/2" TO MOUTH PROTECTED BY STEEL BULWARK.	
ON " " BOILER FEED TANK	" " " " 18 1/2" " " " " " " " " " "	

WOOD PLUGS CANVAS COVERS AND GAUZE HAVE BEEN SUPPLIED.

"EMPIRE LINDEN"

Particulars of Gangway Cargo and Coaling Ports:— *NONE FITTED.*

Particulars of Scuppers and Sanitary Discharge Pipes:— 4 SCUPPERS PORT AND STARBOARD THRO' SHELL FROM UPPER DECK 6"x3", STRINGER BAR CUT IN WAY AND COMPENSATION BAR FITTED BELOW DECK.

SCUPPER FROM WASHPLACE	2" DIA HOLE	IN CASING SIDE PORT,	FITTED WITH PLUG AND CHAIN.	
" " W.C. ^s	1/2" "	" " " "	" (P&S) " " " " "	
" " LAMPROOM	1/2" "	" " " "	" (STARBOARD) " " " " "	
" " GALLEY	2" "	" " " "	" (PORT) " " " " "	✓

SANITARY PIPING:-

CREW'S W.C. PORT SIDE	4" DIA DISCHARGE PIPE,	DISCHARGES THRO' M.C.I.	NON-RETURN STORM VALVE IN SHIPS SIDE	12"	BELW UPPER DS
OFFICERS W.C. STARBOARD	" 4" "	" " "	" " " " " "	10"	" " " "
GALLEY SINK PORT	" 1 1/4" "	" " "	" G.M. " " " " " "	48"	" " " "
BATHROOM PORT SIDE, BATH & WASHBASIN	1 1/2" DIA DISCHARGE PIPE	DISCHARGES THRO' G.M.	" " " " " "	15"	" " " "

Particulars of Side Scuttles :—	No SHIPS	SIDE SCUTTLES	FITTED.
To OFFICERS W.C. PORT	1-8"	" OPENING LIGHT IN CASING END, WITH DEADLIGHT	
To WASHPLACE "	1-8"	" " " SIDE, " "	
To BOILER SPACE P&S.	2-12"	" " " " , " "	
To DRYING ROOM PORT	1-8"	" " " " , " "	
To GALLEY PORT	1-10"	" " " " AND 1-10" OPENING LIGHT IN FORE END OF CASING, WITH DEADLIGHTS.	
To OFFICERS BERTH STARBOARD	1-10"	" " " " AND 1-10" " " " " " " " " " " " " " "	
To ACCOMMODATION BELOW UPPER DECK FORD	2-8"	FIXED LIGHTS IN SKYLIGHT TOP, FITTED WITH 3/8" STEEL PLATE COVERS, BOLTED TO SKYLIGHT TOP BY 3-5/8" BOLTS, THE COVERS BEING PORTABLE AND OF STRONG CONSTRUCTION.	
To ACCOMMODATION BELOW UPPER DECK FORD	4-8"	OPENING LIGHTS IN SKYLIGHT SIDES, WITH DEADLIGHTS.	
To STORE STARD	1-8"	OPENING LIGHT IN CASING SIDE, WITH DEADLIGHT.	
To LAMPROOM STARD	1-8"	" " " " " " "	
To CREW'S W.C. STARD	1-8"	" " " " " " "	
In SKYLIGHTS AFT (P&S) OF CREW'S COMPANION	2-8"	OPENING LIGHTS IN SIDES OF EACH SKYLIGHT, WITH DEADLIGHTS.	
In " " " " " " "	1-8"	FIXED LIGHT IN TOP OF EACH SKYLIGHT, FITTED WITH 3/8" STEEL	
PLATE COVERS, BOLTED TO SKYLIGHT TOP BY 3-5/8" BOLTS, THE COVERS BEING PORTABLE AND OF STRONG CONSTRUCTION.			✓

Vertical distance of Sill of lowest Side Scuttle above top of keel

Particulars of Guard Rails:— STEEL BULWARKS ALL FORE AND AFT 3'-0" HIGH STRONGLY CONSTRUCTED.

Particulars of Gangways, Lifelines, etc.:— *NONE FITTED*

Particulars of Freeing Arrangements.						
	Length of Bulwark	Height of Bulwark	Size of Freeing Ports	Number each side	Area each side	Rule area each side
After Well	105'-0"	3'-0"	5'-2½" x 6"	4 ✓	10.42 sq ft	14.7 for 7L
Forward Well	✓	✓	✓	✓	✓	✓

State position of each freeing port { ~~After Well:—~~ SEE SKETCH ON PAGE 1 FOR POSITIONS.
(F. and A. position and height above deck edge) { ~~Forward Well:—~~ 7/4" ABOVE DECK.

State whether the freeing ports are fitted with shutters, bars, or rails, and give particulars of such:— No.

Additional area where sheer is less than standard. ✓

PARTICULARS OF PROTECTION TO OPENINGS, ETC.

HATCHWAYS ON FREEBOARD AND SUPERSTRUCTURE DECKS.											
Description of Hatchway			2 COAL HATCHES ON CASING TOP								
Dimensions of Hatchway			3'-0" x 2'-0" WIDE								
COAMINGS	{	Height above Deck ...	SITUATED 3'-0" ABOVE UPPER DECK								
		Thickness { Sides ...	3 x 2 1/2" x .26" O.A. (3" VERTICAL)								
		Ends ...									
		Stiffeners ...									
		Brackets, Stays ...	✓								
HATCH BEAMS	{	Number	NONE								
		Spacing									
		Scantling and Sketch ...									
FORE AND AFTERS	{	Bearing Surface ...	NONE								
		Number									
		Spacing									
		Unsupported Lengths ...									
		Scantling* and Sketch ...									
		Bearing Surface ...									
HATCH COVERS	{	Material	HINGED STEEL PLATE COVER WITH LOCKING ARRANGEMENT								
		Thickness26								
		How fitted	COVER FLANGED DOWN 1 1/2" ALL ROUND								
		Bearing Surface ...	✓								
Spacing of Cleats			✓								
Number of Tarpaulins			✓								
*Are wood fore and afters steel shod at all bearing surfaces?			✓								
Are battens and wedges efficient and in good condition?			✓								
Are tarpaulins in good condition and in accordance with rule requirements?			✓								
Are lashings provided in accordance with rule requirements?			✓								

Particulars of any special features:—

Endorsement at first survey and at surveys for renewal of Certificate:—

The fittings and appliances are in accordance with the particulars shown on this form (or as now modified) and are in good condition.

