

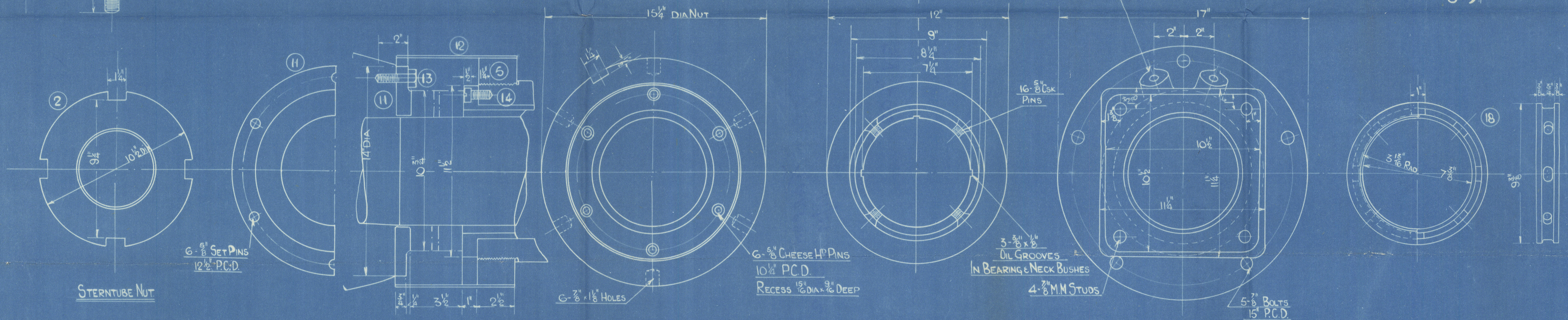
ENG. NO.	SETS	REMARKS
1327-6	2	LLOYDS SURVEY
1329-39	2	
1333-4	2	

STERNTUBE & SHAFTING

FOR 12"-20"-32" ENGINE - 200 HP/B.P.

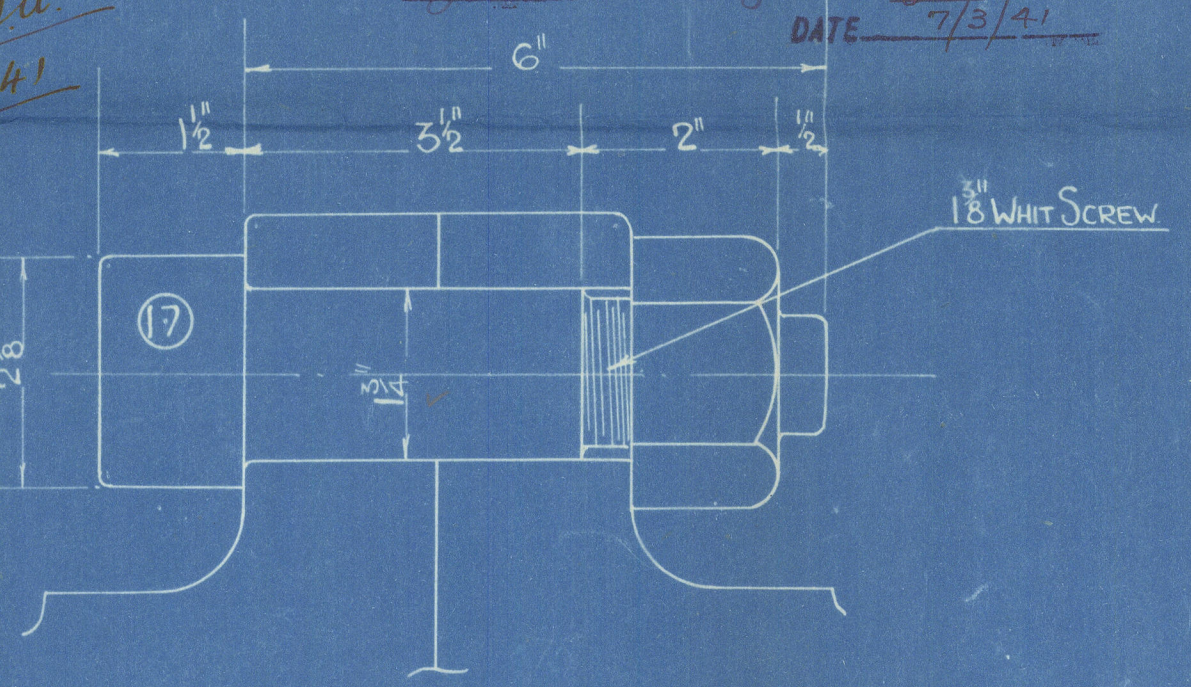
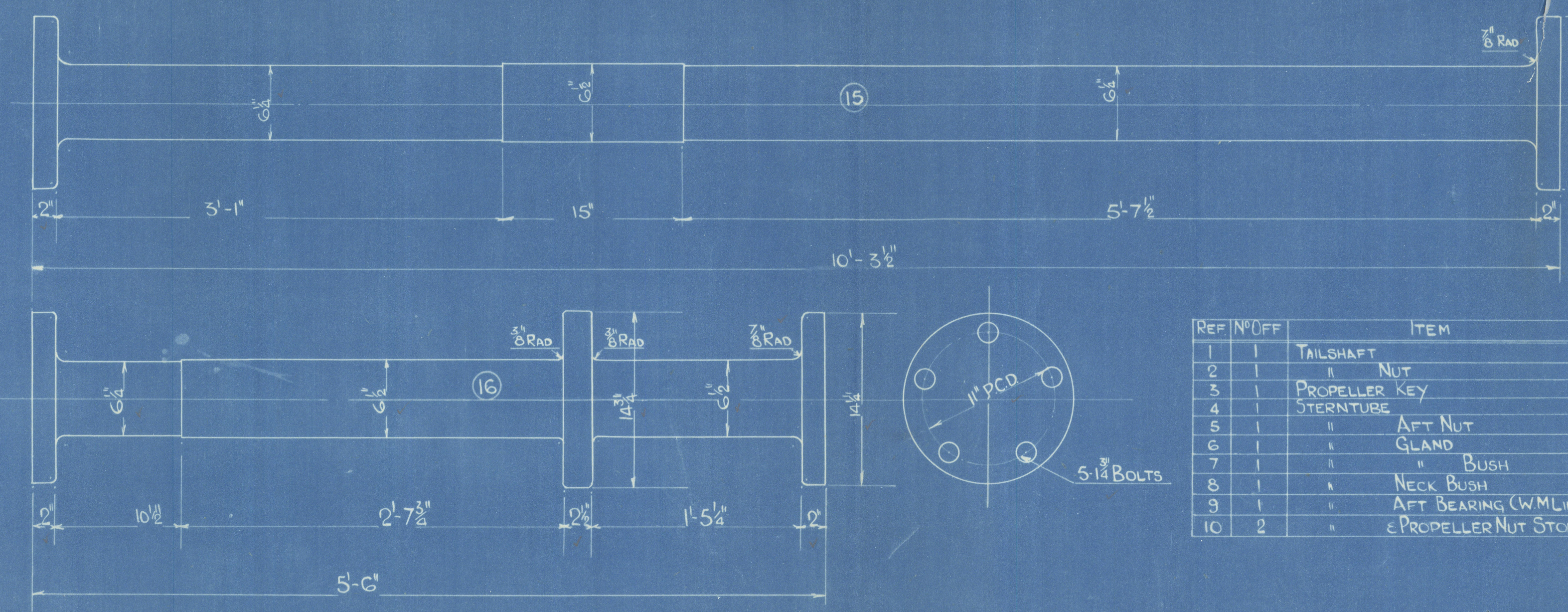
SCALES: 1 1/2" = 1 FOOT

LONDON COPY.



APPROVED
LLOYD'S REGISTER OF SHIPPING

Noted & signed
17-3-41

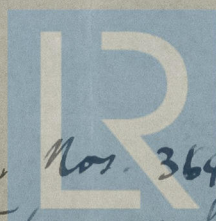


REF. NO.	OFF	ITEM	MATERIAL	PATTERN
1	1	TAILSHAFT	STEEL	28/32 TONS
2	1	" NUT	WROUGHT IRON	-
3	1	PROPELLER KEY	STEEL	-
4	1	STERNTUBE	CAST IRON	-
5	1	" AFT NUT	STEEL	-
6	1	" GLAND	CAST IRON	1321/2
7	1	" BUSH	GUNMETAL	"
8	1	" NECK BUSH	"	"
9	1	" AFT BEARING (W/MLINED)	"	"
10	2	" & PROPELLER NUT STOPPERS	STEEL	-

REF. NO.	OFF	ITEM	MATERIAL	PATTERN
11	1	RUBBING RING FOR NEWARK GLAND	CAST IRON	1321-2
12	1	ROPE GUARD (IN HALVES)	MILD STEEL	-
13	6	SET PINS	"	-
14	6	CHEESE HEAD PINS	"	-
15	1	INTERMEDIATE SHAFT	STEEL	28/32 TONS
16	1	THRUST SHAFT	"	"
17	15	COUPLING BOLTS & NUTS	"	"
18	1	STERNTUBE LANTERN RING	GUNMETAL	-

TARPAN
M/M. 8002

S/V "LOS"



© 2020

Dunston's Yd. Nos. 364/5

① Hermitage & Shaping

Lloyd's Register
Foundation