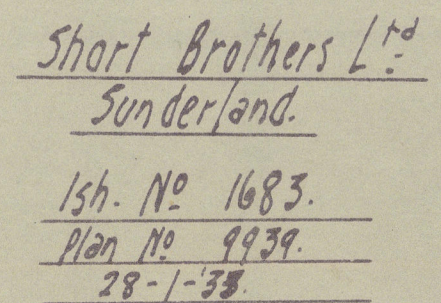
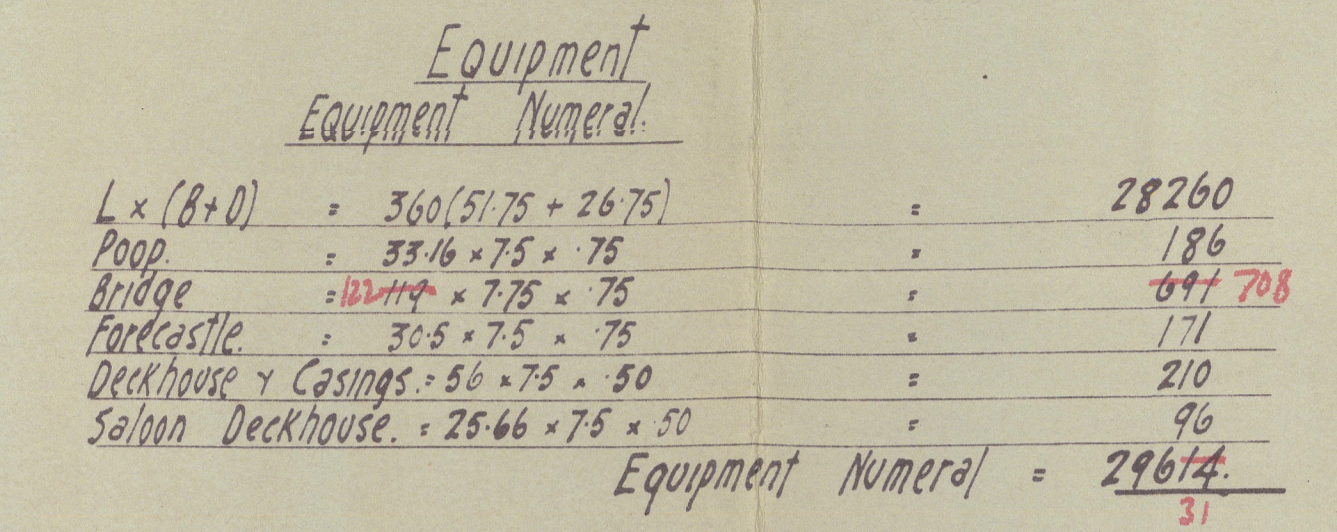


Lloyds Numerals.

L.D.	360×26.75	=	9630
L.(B.D.)	$360 \times (51.75 + 26.75)$	=	28260
40 To Upper Deck	360×26.75	=	1345
40 To Bridge Deck	360×34.5	=	1043
Erections	50.75%		
	51.5		

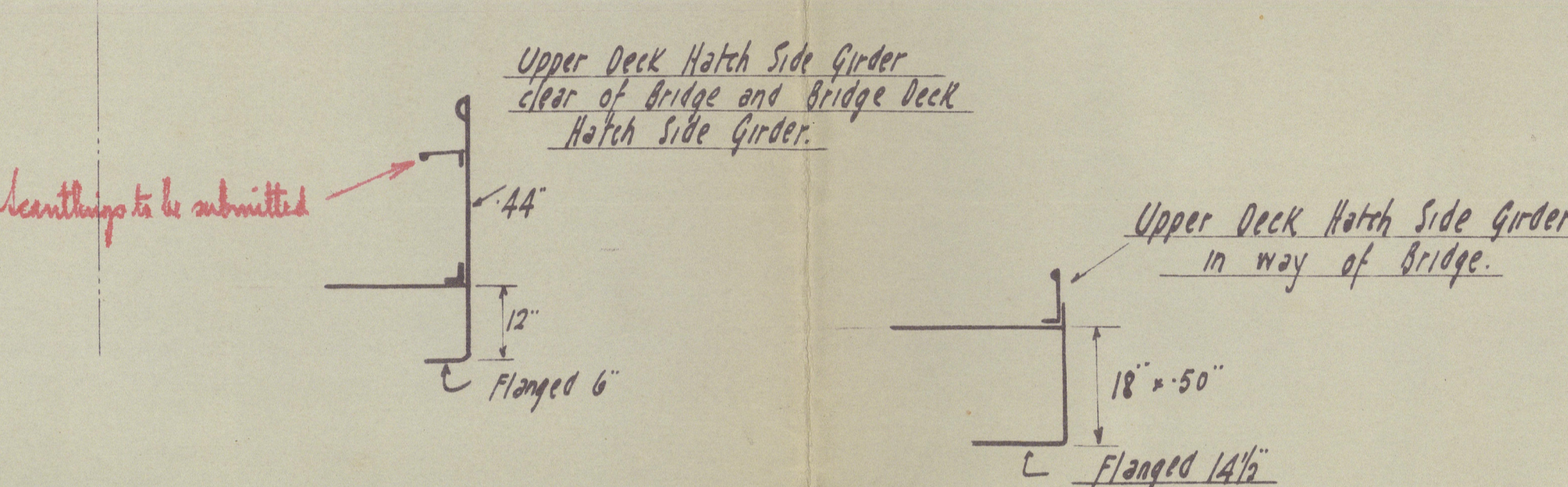


S^{rs} JOSEPH W. ISHERWOOD & Co., LTD.,
 4, LLOYDS AVENUE,
 LONDON, E.C.3.
 DATE 28-1-33



3 lower anchors stockless collective weight = 149½ cwt.
 1 strand anchor ex stock = 16 cwt.
 270 fathoms of 2" steel link chain cable or forged steel cable 178"
 90 " 4½" steel wire strand line
 120 " 4½" - - - - - - - - - -
 2 of 90 fathoms 2½" - - - - - - - - - -
 2 of 90 " 2½" - - - - - - - - - -

↑ Particulars to be submitted.



SHIP N^o 443.
MIDSHIP SECTION

DIMENSIONS: L.B.P. 360'-0" x NORMAL BREADTH MOULDED 51'-9" x DEPTH M^{LD} 26'-9"

MAXIMUM BREADTH MOULDED 57'-3"

SCALE 1/2" = 1 FOOT.

TO CLASS LLOYDS + 100A1 With special notations:-
 1. Longitudinal framing at bottom and at deck
 2. Transverse framing at bottom and at deck

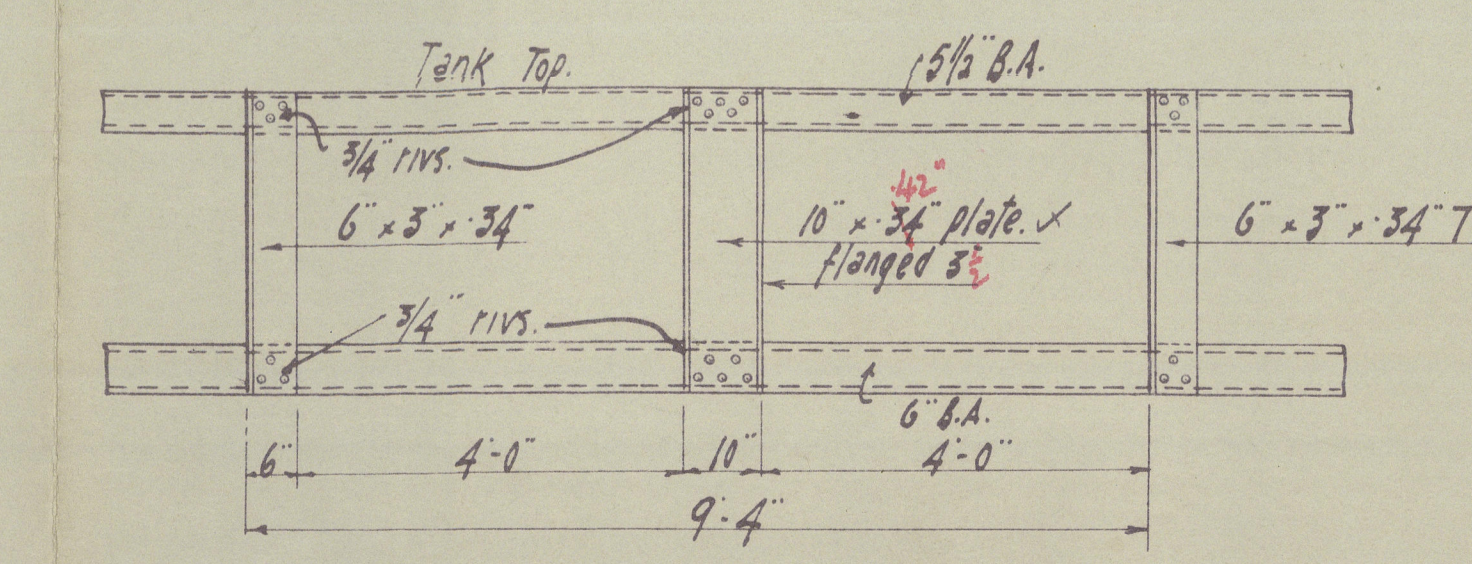
N.B.S = NEW BRITISH STANDARD SECTIONS

ISHERWOOD COMBINATION SYSTEM.

Riveting of Butts:

Bulbs of Keel Plate.	Quadruple riveted overlaps for $\frac{1}{2}$ Length
	To treble riveted overlaps at ends.
Bulbs of Bottom Shell.	Treble riveted overlaps throughout.
Bulbs of Side Shell.	Treble riveted overlaps throughout.
Strake between Sheerstrake.	Quadruple riveted overlaps for $\frac{1}{2}$ Length
(Clear of bridge)	To treble riveted overlaps at ends.
Sheerstrake.	Quadruple riveted overlaps for $\frac{1}{2}$ Length
(Clear of bridge) ^{margin to double}	Bulbs at ends, quadruple riveted overlaps where thickness exceeds 68"
	Treble riveted overlaps where above 42" and not exceeding 68"
Upper Deck Plating	Treble riveted overlaps
Including sheerstrake & strake below it.	
Upper Deck Stringer.	Treble riveted overlaps
Upper Deck Plating	Double riveted overlaps
(on way of bridge)	Double riveted overlaps
Upper Deck Plating	Double riveted overlaps
(on way of bridge)	
Upper Deck Stringer.	Quadruple riveted overlaps for $\frac{1}{2}$ Length.
(Clear of bridge)	Bulbs at ends, quadruple riveted overlaps where above 68" thick.
	Treble riveted overlaps above 42" thick and exceeding 68" thick.
	Double riveted overlaps where not exceeding 42" thick.
	Quadruple riveted overlaps at ends of bridge.
Upper Deck Plating	Treble riveted overlaps for $\frac{1}{2}$ Length.
(Clear of bridge)	Bulbs at ends, Treble riveted overlaps where above 54" thick
	Double riveted overlaps above 42" thick and not exceeding
	54" thick. Single riveted overlaps where not above 42"
	Treble riveted overlaps throughout.
Centre Girder.	Treble riveted overlaps for $\frac{1}{2}$ Length to double
Margin Plate.	riveted overlaps at ends.
Tank Top Centre Strake.	Treble riveted overlaps for $\frac{1}{2}$ Length to double
	riveted overlaps at ends.
Tank Top Plating.	Double riveted overlaps for $\frac{1}{2}$ Length to single
	riveted overlaps at ends.

Fore and Aft elevation through Double Bottom



Just
- 2.2.3-

4

Office Copy

Shut 16 443

Midship Section

Frieden
"Arcwear"

St. Cochrane
and

GEN. BOX NO 1250

See Amended plan



© 2020

Lloyd's Register
Foundation

007998-008007-0088