

Lloyd's Register of Shipping.

SURVEYS FOR FREEBOARD.

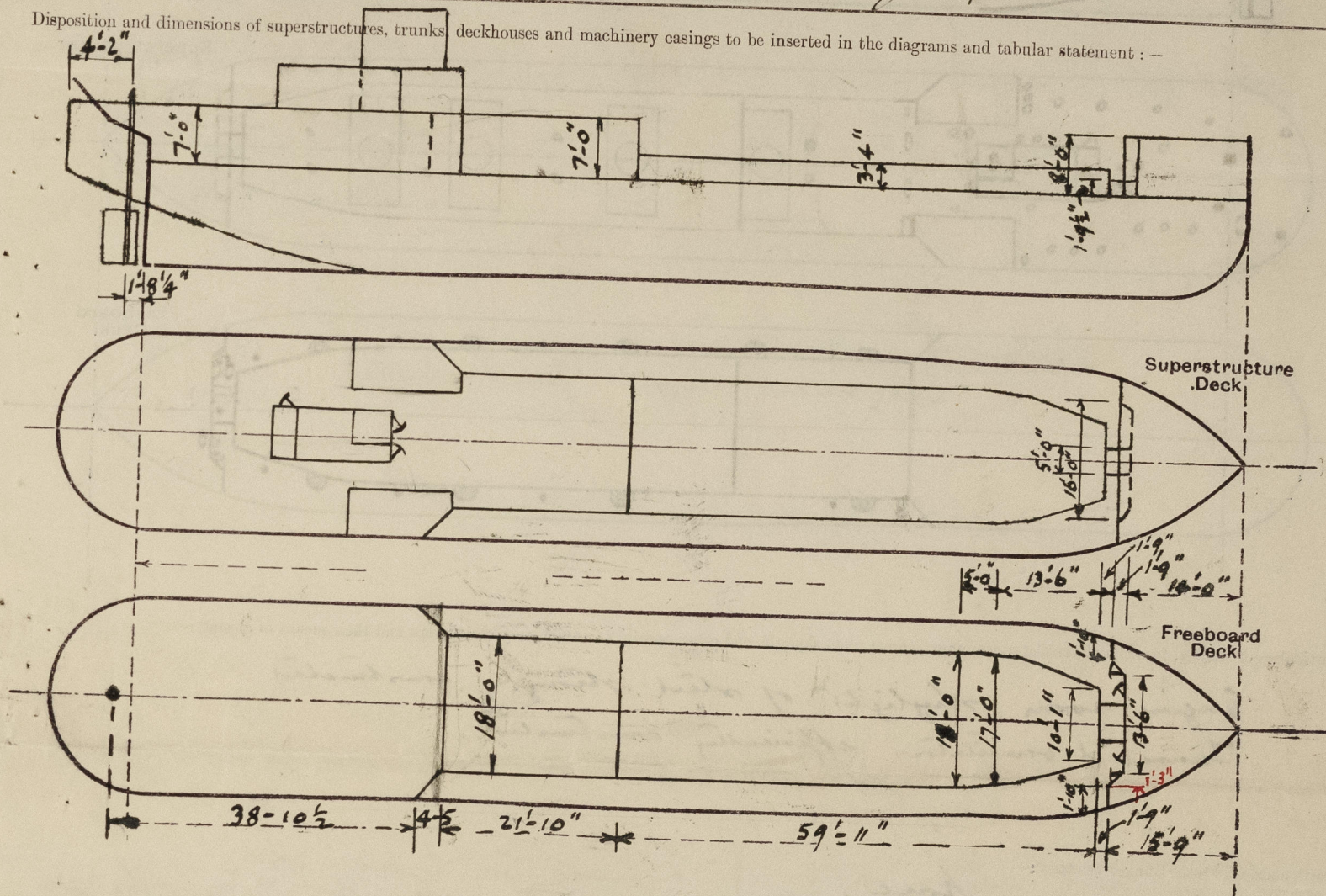
(CONDITIONS OF ASSIGNMENT.)

Ship's Name *LUCIA 2 (ex Chant 52)*Port of Survey *CARDIFF*

Official Number

Surveyor's Signature *J. W. Hurston*Nationality and Port of Registry *PANAMANIAN PANAMA CITY*Date of Survey *July 2nd 1946*

Disposition and dimensions of superstructures, trunks, deckhouses and machinery casings to be inserted in the diagrams and tabular statement:—



Particulars of Superstructures, Trunks, Casings, Deckhouses.

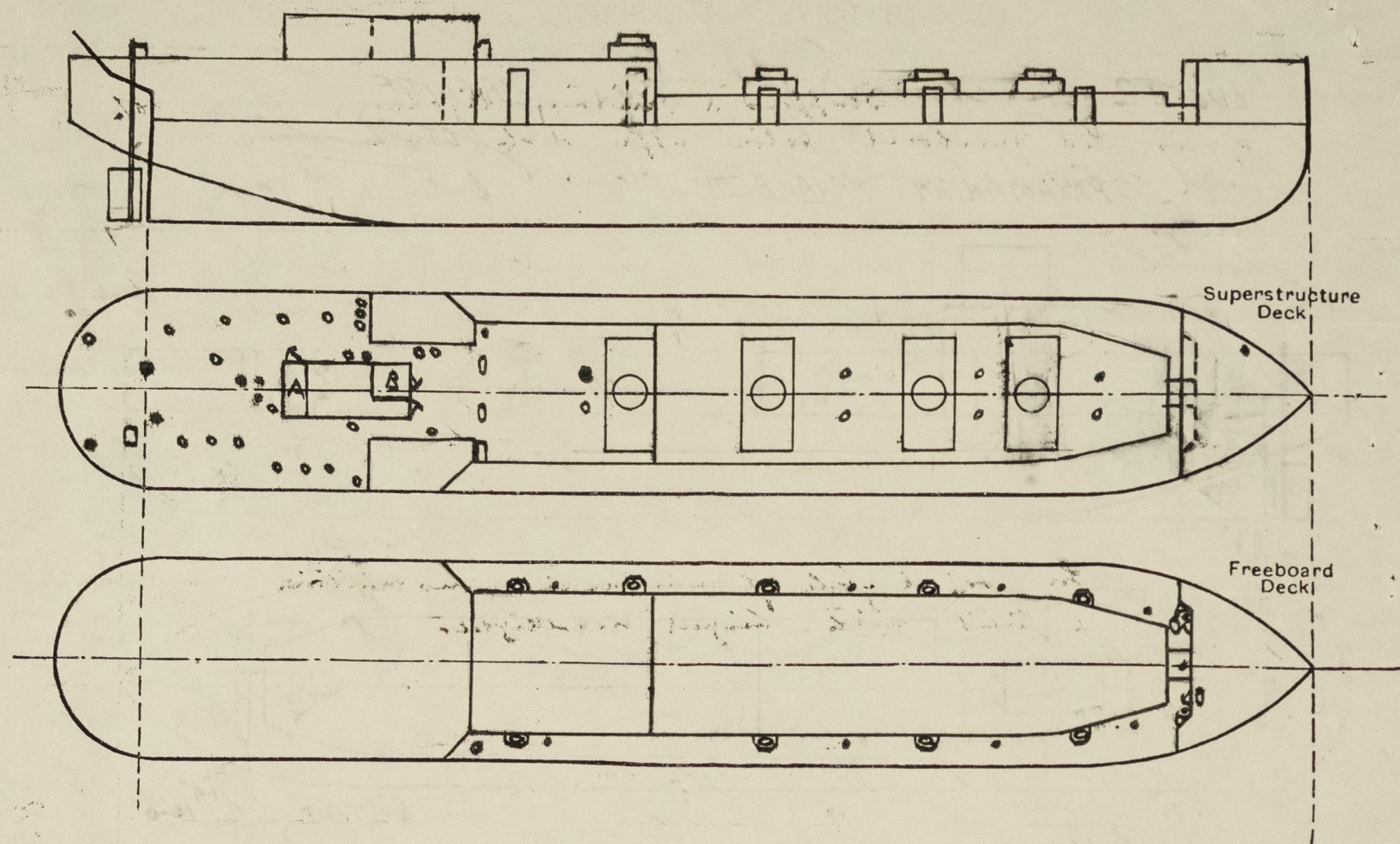
	Coaming	Plating	Stiffeners	Spacing	End Attachments of Stiffeners	Size of Openings	Height of Sills	Height of Casings
Poop Bulkhead ...	5/16 Plating		5x3x5/16 L	26"	Blind T&B	Low	—	7'-0"
Raised Quarter Deck Bulkhead ...								
Bridge, After Bulkhead ...								
Bridge, Forward Bulkhead ...								
Forecastle Bulkhead ...	5/16 Plating		3x3x1/4 L	30"	1 rivet thru forward T&B	42x41x1'-9"	15"	8'-0"
Raised Trunk, forward ...	"		1 horizontal 4x2 1/2 x 3/8 L	22"	Blind	Low		
Trunk, Forward ...	"		1 horizontal	20"	Blind	Low		
Exposed Machinery Casings on Freeboard or Raised Quarter Decks ...								
Exposed Machinery Casings on Superstructure Decks ...	42x5/16	1/4	3x2 1/2 x 1/4	21"	Top 1 rivet thru trunk Blind at stem. 1 @ 4'-9" x 1'-9"	18"	7'-6"	
Machinery Casings within Superstructures not fitted with Class I Closing Appliances ...								
Deckhouses on Flush Deck Ships ...								

Particulars of Closing Appliances (state if capable of being manipulated from both sides).

Poop Bulkhead ...	No openings
Raised Quarter Deck Bulkhead ...	
Bridge, After Bulkhead ...	
Bridge, Forward Bulkhead ...	
Forecastle Bulkhead ...	4 Hinged steel doors manipulated from both sides
Exposed Machinery Casings on Freeboard or Raised Quarter Decks ...	
Exposed Machinery Casings on Superstructure Decks ...	1 Hinged steel door manipulated from both sides
Machinery Casings within Superstructures not fitted with Class I Closing Appliances ...	
Deckhouses on Flush Deck Ships ...	

PARTICULARS OF PROTECTION TO OPENINGS, ETC.

The following diagrams should be used to indicate the positions of cargo and coaling hatchways, gangway, cargo and coaling ports, ventilators, companionways, etc., which would affect the seaworthiness of the ship:—



Particulars of fiddle, funnel and ventilator coamings, engine room skylight and other openings in machinery casing tops and their means of closing:—

Engine room skylight of steel strongly constructed.
Funnel & ventilators efficiently constructed.

Particulars of Flush Bunker Scuttles:—

none.

Particulars of Companionways:—

A and B. Entrances to fore access in steel casing.
Substantial wood doors 4'-9" x 1'-9" 18" sill.

Particulars of Ventilators in exposed positions on freeboard and superstructure decks:—

Upper deck. 1 @ 8" dia cow vent. Coaming 36" x 5/16 to fun from S.S.
Trunk Ch. 2 @ 5" dia mushroom 12" high to each cargo tank (Blank flanged when carrying oil).
Roof deck 5 @ 6" dia cow vent. Coaming 30" x 5/16
2 @ 7" " " " 30" x 5/16
1 @ 9" " " " 36" x 5/16
1 @ 8" " " " 11 1/4" x 5/16 Blk. to house.
2 @ 8" " hooded " 48" x 5/16 stayed
1 @ 7" " " 54" x 5/16
2 @ 6" " store funnel 36" x 5/16
2 @ 5" " mushroom vents 6" high
4 @ 5" " goose-neck 18" to top.
Wood flugs & canvas covers provided.

Particulars of Air Pipes in exposed positions on freeboard, raised quarter, or superstructure decks:—

Fore deck 1 @ 3" dia 24" to top to fore hatch tank
Upper deck 2 @ 3" dia 47" to top to fore cofferdam.
6 @ 2" dia 47" to top to wing of keel.
2 @ 2" dia 93" to top to wing of keel.
Trunk Ch. 1 @ 2" dia 32" to top to cofferdam
Roof deck 1 @ 3" dia 18" to top to after peak.
2 @ 4" dia 18" to top to fore tankers.
Gauges or covers provided air pipes above 36" high are efficiently supported.

Particulars of Gangway Cargo and Coaling Ports:—

none.

Particulars of Scuppers and Sanitary Discharge Pipes:—

Scupper & sanitary discharges from fore spaces led overboard below upper deck with screw down valve controlled from above upper deck.
Fore scuppers led out upper deck with ~~fixed~~ ^{SCREW} plug permanently attached BY CHAIN.
There are no overboard scuppers from spaces below the upper deck.

Particulars of Side Scuttles:—

In fore & aft of substantial construction & fitted with hinged deadlights.

Vertical distance of Sill of lowest Side Scuttle above top of keel

no side scuttles below fore deck.

Particulars of Guard Rails:—

On fore 36" steel tubular at sides efficiently stayed. 3 for rail at end.
On upper deck 2 wires set up with stretching screws Stations about 9'-0" apart.
3'-9" high
On trunk top stations 36" high & aft 7' apart with single wire forming lifeline from fore to stern on fore.
On fore 3 for rail 40" high

Particulars of Gangways, Lifelines, etc.:—

Access along trunk top with lifeline 1/5 as above.
PERMANENT ~~GAUGE~~ ^{LADDER} FITTED FROM FORWARD END OF THE TRUNK TO THE FORECASTLE DECK

Particulars of Freeing Arrangements.

Particulars of Freeing Arrangements.						
	Length of Bulwark	Height of Bulwark	Size of Freeing Ports	Number each side	Area each side	Rule area each side
After Well	Open rails full length of well. ✓					
Forward Well						
State position of each freeing port			(After Well :—			
(F. and A. position and height above deck edge)			(Forward Well :—			
State whether the freeing ports are fitted with shutters, bars, or rails, and give particulars of such.						
Additional area where sheer is less than standard.						

© 2020

Lloyd's Register Foundation

007988-067997-0106 2/2

PARTICULARS OF PROTECTION TO OPENINGS, ETC.

		HATCHWAYS ON FREEBOARD AND SUPERSTRUCTURE DECKS.				ON TRUNK TOP		ON UPPER DK	
Description of Hatchway		No 1	No 2	No 3	No 4	Hatch to Cuproom	Hatch to Store on Poop.	TRUNKS TO Nos 1, 2, 3 WING SPACES	TRUNKS TO No 4. Wing SPACES
Dimensions of Hatchway		6'-8" x 15'	6'-8" x 15'	6'-8" x 15'	6'-8" x 15'	1'-5" x 2'-0"	1'-11" x 2'-1"	2'-4" x 2'-0"	2'-4" x 2'-0"
COAMINGS	Height above Deck	18"	do	do	do	18"	18"	48"	72"
	Thickness	3/8	do	do	do	5/16	5/16	3/8	3/8
	Sides								
	Ends								
Stiffeners									
Brackets, Stays									
HATCH BEAMS	Number								
	Spacing								
Scantling and Sketch									
Bearing Surface									
FORE AND AFTERS	Number								
	Spacing								
Unsupported Lengths									
Scantling* and Sketch									
Bearing Surface									
HATCH COVERS	Material	Circular hatch in center				Steel	Steel		
	Thickness	Coaming 10" x 3/4"				hinged w/ T	1/4"		
How fitted (mill)		7/16" hinged steel lid							
Bearing Surface		jointed w/ T & secured by				1/8"	13"		
Spacing of Cleats		bolts spaced 21" apart.							
Number of Tarpaulins									
<p>*Are wood fore and afters steel shod at all bearing surfaces? <input checked="" type="checkbox"/></p> <p>Are battens and wedges efficient and in good condition? <input checked="" type="checkbox"/></p> <p>Are tarpaulins in good condition and in accordance with rule requirements? <input checked="" type="checkbox"/></p> <p>Are lashings provided in accordance with rule requirements? <input checked="" type="checkbox"/></p>									

Particulars of any special features:—

Mantle to fore peak on U. Dk in plate 18" x 12"	Bolted plate cover w/ T
" " fore C.D " " " 18" x 12"	" " " " "
" " after C.D " " " 18" x 12"	" " " " "
" " Drain Tank " " " 18" x 12"	" " " " "

Cleats fitted on main cargo hatches 24" apart ✓
 Scantling for two fore & afters 6'-8" apart & rest same as hatch sides
 with 2" bearing surface, but no F.A.A's, wood coams, bottom bars
 etc. are on board.

Endorsement at first survey and at surveys for renewal of Certificate:—

The fittings and appliances are in accordance with the particulars shown on this form (or as now modified) and are in good condition.



© 2020

Lloyd's Register
Foundation