

6.7.11  
5-9-11

St. No 2472/S<sub>1</sub>



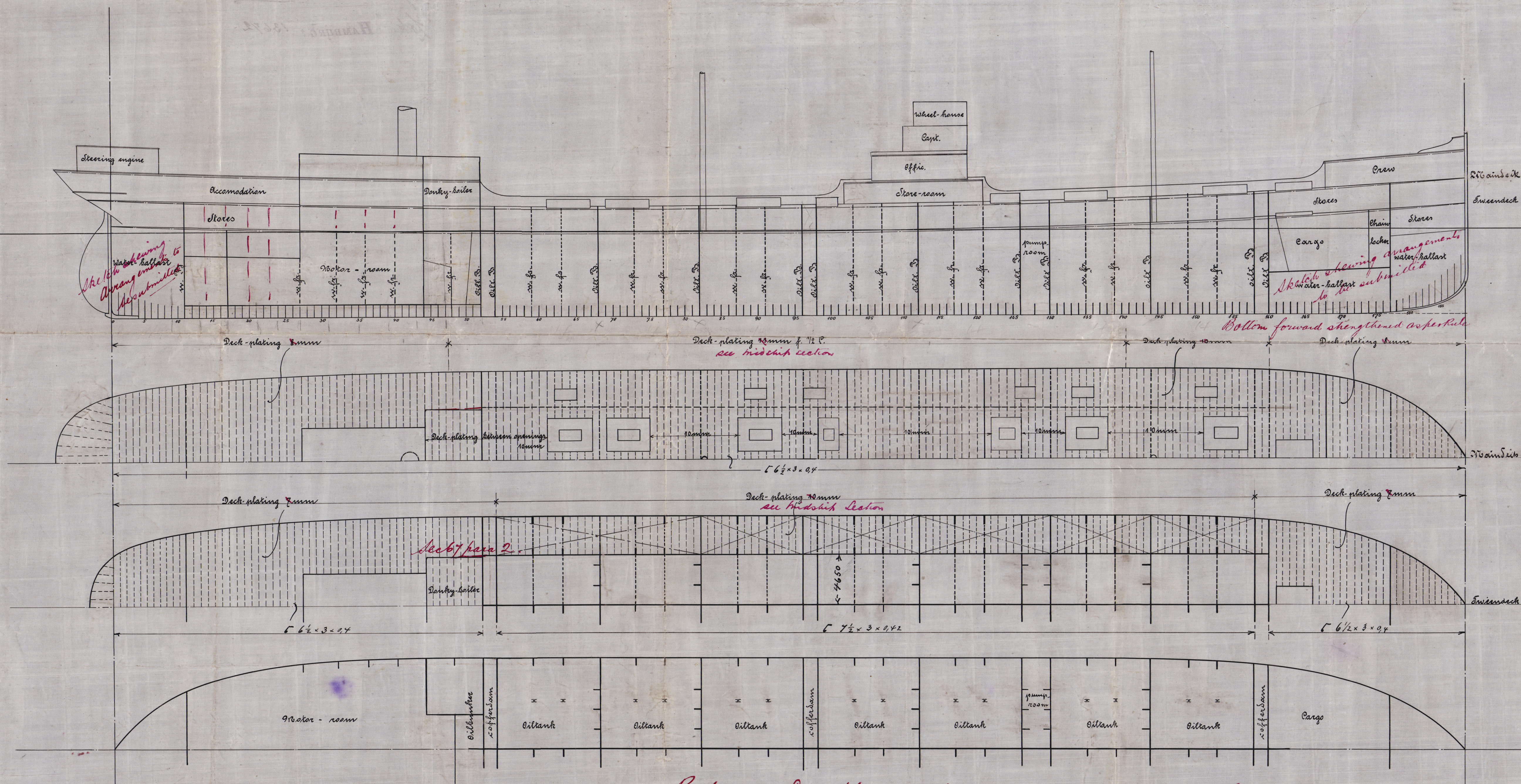
C. 186/187  
Steel Twin-Screw Oil Tank Vessels  
with Germania crude oil makers

Length between ports 400'-0" = 121.92 m  
Breadth moulded 53'-0" = 16.15 m  
Depth moulded to Main Deck 32'-4" = 9.85 m  
Depth of Sweendeeck 7'-6" = 2.28 m

1:200

According to freeboard rules of  
See-Berufsgenossenschaft

Sheer on Stem	2,490 mm	2,380 mm
" one fourth after Stem	0,622 "	0,625 "
" " before Stern-post	0,064 "	0
" on Stern-post	0,910 "	0,866 "



Profile and Deck plans showing structural arrangements, on larger scale,  
to be submitted.

C.F.  
6.7.11



10075

Sketch of longitudinal & deck plans  
of steamship *Fried. Krupp. Act. Co. Germania*  
Hiel.

11/27/82 N. H.

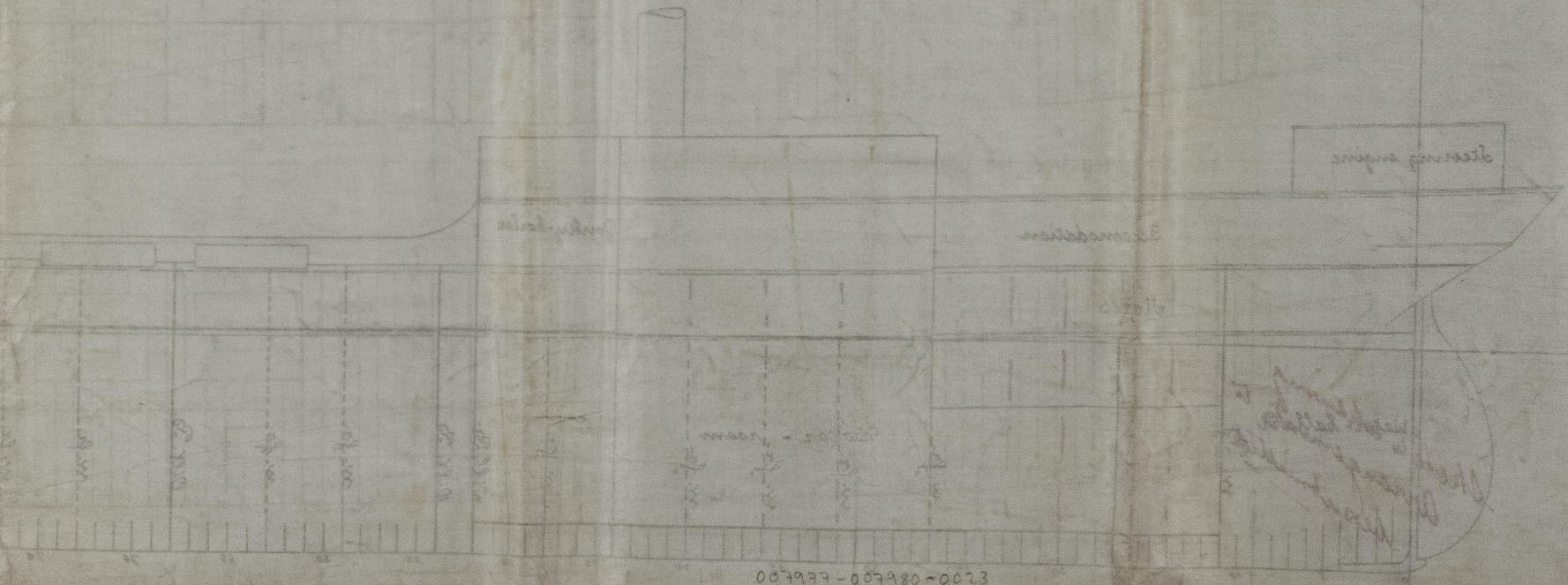
Oelbrennsteamer No 386. 0184

n/n "Glenpod" Hamburg Eller 30/6/11

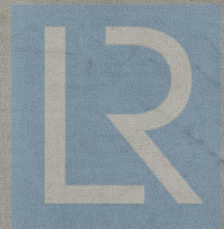
"<sup>ex</sup>Hagen" **HAMBURG** Kpl 13237

"Loki" **HAMBURG** 13672

186-187



007977-007980-0073



© 2020  
Lloyd's Register  
Foundation