

Lloyd's Register of Shipping.  
SURVEYS FOR FREEBOARD.  
(CONDITIONS OF ASSIGNMENT.)

Ship's Name VAN GELDER

Port of Survey

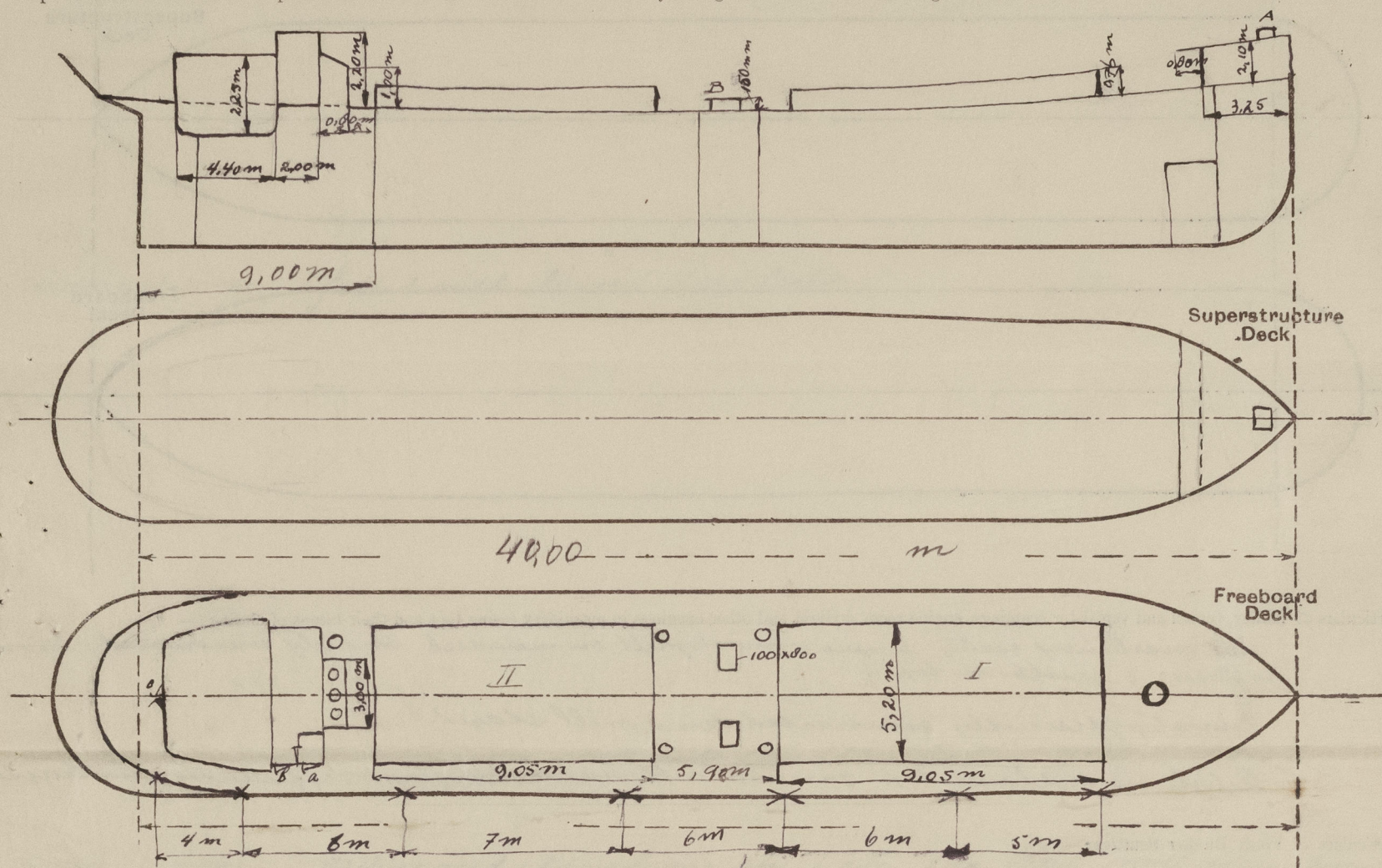
Official Number                      ✓

Surveyor's Signature

Nationality and Port of Registry *Netherlands Rotterdam* Date of Survey

9<sup>th</sup> 11<sup>th</sup> April 1946

Disposition and dimensions of superstructures, trunks, deckhouses and machinery casings to be inserted in the diagrams and tabular statement : —



Particulars of Superstructures, Trunks, Casings, Deckhouses.

	Coaming	Plating	Stiffeners	Spacing	End Attachments of Stiffeners	Size of Openings	Height of Sills	Height of Casings
Poop Bulkhead ... .. ✓								
Raised Quarter Deck Bulkhead ... ✓								
Bridge, After Bulkhead ... .. ✓								
Bridge, Forward Bulkhead ... .. ✓								
Forecastle Bulkhead ... ..	7 mm	6 mm	L 90.75.7	600 mm	lugs	600 X 1350	500 mm	2.10 M
Trunk, Aft ... ..								
Trunk, Forward ... ..								
Exposed Machinery Casings on Free- board or Raised Quarter Decks ...								
Exposed Machinery Casings on Super- structure Decks ... ..								
Machinery Casings within Superstruc- tures not fitted with Class I Closing Appliances ... ..								
Deckhouses on Flush Deck Ships ...	7 mm	65 X 50 X 7	500 mm	✓		2 550 X 1350 mm 2 600 X 1350 mm 2 700 X 1450 mm	500 mm 450 mm 400 mm	

Particulars of Closing Appliances (state if capable of being manipulated from both sides).

Poop Bulkhead	...	...	...	✓
Raised Quarter Deck Bulkhead	...	...	...	✓
Bridge, After Bulkhead	...	...	...	✓
Bridge, Forward Bulkhead	...	...	...	✓
Forecastle Bulkhead	...	...	...	✓
Exposed Machinery Casings on Free-board or Raised Quarter Decks	...	...	...	✓
Exposed Machinery Casings on Superstructure Decks	...	...	...	✓
Machinery Casings within Superstructures not fitted with Class I Closing Appliances	...	...	...	✓
Deckhouses on Flush Deck Ships	...	...	...	✓

*Steel hinged door capable of being manipulated from both sides.*

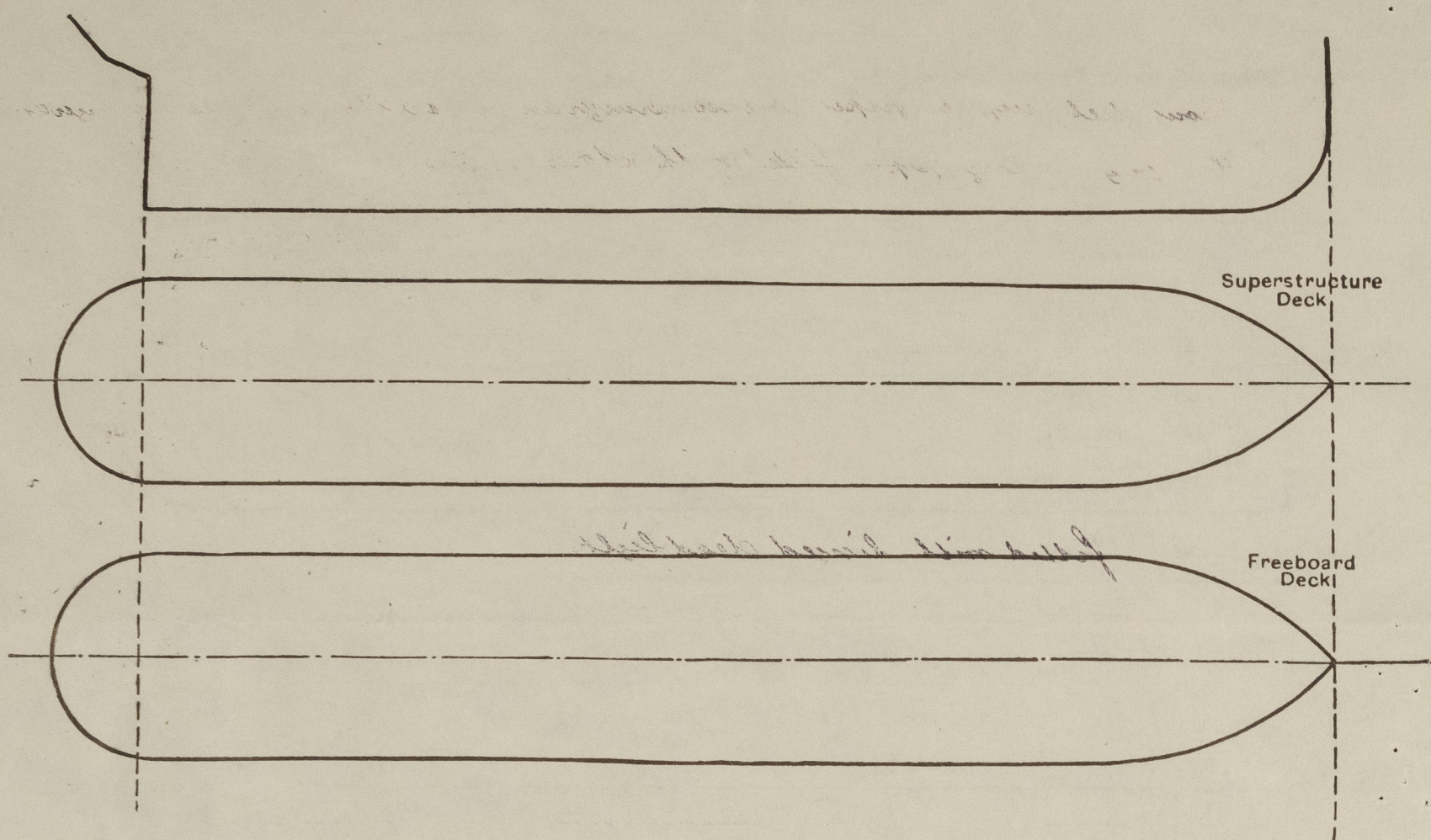
*a steel hinged door capable of being manipulated from both sides.*

*b.e. wood " " " " " " " " " "*



# PARTICULARS OF PROTECTION TO OPENINGS, ETC.

The following diagrams should be used to indicate the positions of cargo and coaling hatchways, gangway, cargo and coaling ports, ventilators, companionways, etc., which would affect the seaworthiness of the ship:—



Particulars of tiddley, funnel and ventilator coamings, engine room skylight and other openings in machinery casing tops and their means of closing:—

No machinery casing. Engine room skylight on main deck strongly constructed plating 7 mm. no flaps; 3 scuttles on top.

Funnel efficiently constructed and well stayed.

Skylight on deckhouse top 900x600 with steel hinged flaps; efficiently constructed.

Particulars of Flush Bunker Scuttles:—

Particulars of Companionways:— A steel companionway leading to engine room, see sketch - a - efficiently constructed. Door leading to deck and door leading to accommodation both of steel and the latter also capable of being manipulated from both sides.

Particulars of Ventilators in exposed positions on freeboard and superstructure decks:—

1 - 10" ventilator coaming aft 600 mm high 8 mm thick  
4 - 6" " " 5 amidships 900 mm high 8 mm " } on main deck.  
1 - 12" " " forward 600 mm high.

1 - 6" " " on deckhouse aft 1800 mm high efficiently stayed.

Wooden plugs and canvas covers are available.

Particulars of Air Pipes in exposed positions on freeboard, raised quarter, or superstructure decks:—

1 - 2 1/2" air pipe on freeboard deck aft p.s. with wood plug and canvas cover  
1 - 2 1/2" " " " aft p.s. with wire gauze diaphragm  
Height of air pipes on freeboard deck 80 cm.  
" " " " of cle " 15 cm.

Particulars of Gangway Cargo and Coaling Ports:—

Particulars of Scuppers and Sanitary Discharge Pipes:—

Strong steel scupper pipes abreast stringer angle bar through deck stringer and sheer.  
Sanitary discharge pipes fitted with storm valves.

Particulars of Side Scuttles:—

fitted with hinged dead lights.

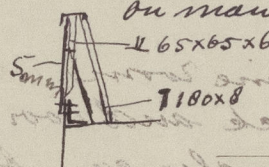
Vertical distance of Sill of lowest Side Scuttle above top of keel

no side scuttles below freeboard deck

Particulars of Guard Rails:—

Railing and stanchions on f'cle 1 m high with stanchions 1.25 m apart.

on main deck closed bulwark with stanchions 1.60 m apart.



Particulars of Gangways, Lifelines, etc.:—

Lifelines are available.

## Particulars of Freeing Arrangements.

	Length of Bulwark	Height of Bulwark	Size of Freeing Ports	Number each side	Area each side	Rule area each side
After Well ...	30 m	1.00 m	from aft. 700x350 400x300 1000x300.	5	1.06 m <sup>2</sup> 19.70	9.3 s.f.
Forward Well ...						

State position of each freeing port ... (F. and A. position and height above deck edge) { After Well:— } see sketch; 15 cm above deck.  
Forward Well:—

State whether the freeing ports are fitted with shutters, bars, or rails, and give particulars of such:— filled with 3 horizontal bars 7/8"

Additional area where sheer is less than standard.

VAN GELDER.



© 2020

Lloyd's Register Foundation



PARTICULARS OF PROTECTION TO OPENINGS, ETC.

HATCHWAYS ON FREEBOARD AND SUPERSTRUCTURE DECKS.											
Description of Hatchway			Cargo hold No. 1		No. 2		A on/ele deck		B above deep tank		
Dimensions of Hatchway			4,05 x 5,20 m		9,05 x 5,20 m		450 x 550		1000 x 900		
COAMINGS	{	Height above Deck	760 mm ✓		350 mm		150 mm				
		Thickness	Sides	11 mm ✓		7 mm		8 mm			
			Ends	11 mm ✓							
		Stiffeners	L 140 x 65 x 9 ✓		✓		✓				
Buckets, Stays			φ 50 mm 3 m apart ✓		✓		✓				
HATCH BEAMS	{	Number	3 ✓		✓		✓				
		Spacing	2,25 m ✓								
		Scantling and Sketch	✓ 500 x 10		A 90 x 90 x 8						
		Bearing Surface	90 mm ✓								
FORE AND AFTERS	{	Number			✓		✓				
		Spacing									
		Unsupported Lengths									
		Scantling* and Sketch	✓								
Bearing Surface											
HATCH COVERS	{	Material	wood		steel plate		steel				
		Thickness	90 mm		closed by		8 mm				
		How fitted	longitudinal		4-1/2"		5/8" bolts				
		Bearing Surface	90 mm		baffles		100 mm apart				
Spacing of Cleats			0,50 m ✓		✓		✓				
Number of Tarpaulins			3 ✓		✓		✓				
<p>*Are wood fore and afters steel shod at all bearing surfaces? ✓</p> <p>Are battens and wedges efficient and in good condition? yes ✓</p> <p>Are tarpaulins in good condition and in accordance with rule requirements? yes ✓</p> <p>Are lashings provided in accordance with rule requirements? yes ✓</p>											

Particulars of any special features :—

Endorsement at first survey and at surveys for renewal of Certificate :—

The fittings and appliances are in accordance with the particulars shown on this form (or as now modified) and are in good condition.

The freeboards assigned by the Netherlands Authorities are as follows.

Tropical —  
Summer 40 cm underneath deck line  
Winter 43 cm " " "  
W.N.A. —  
allowance for fresh water 5 cm



© 2020

Lloyd's Register  
Foundation