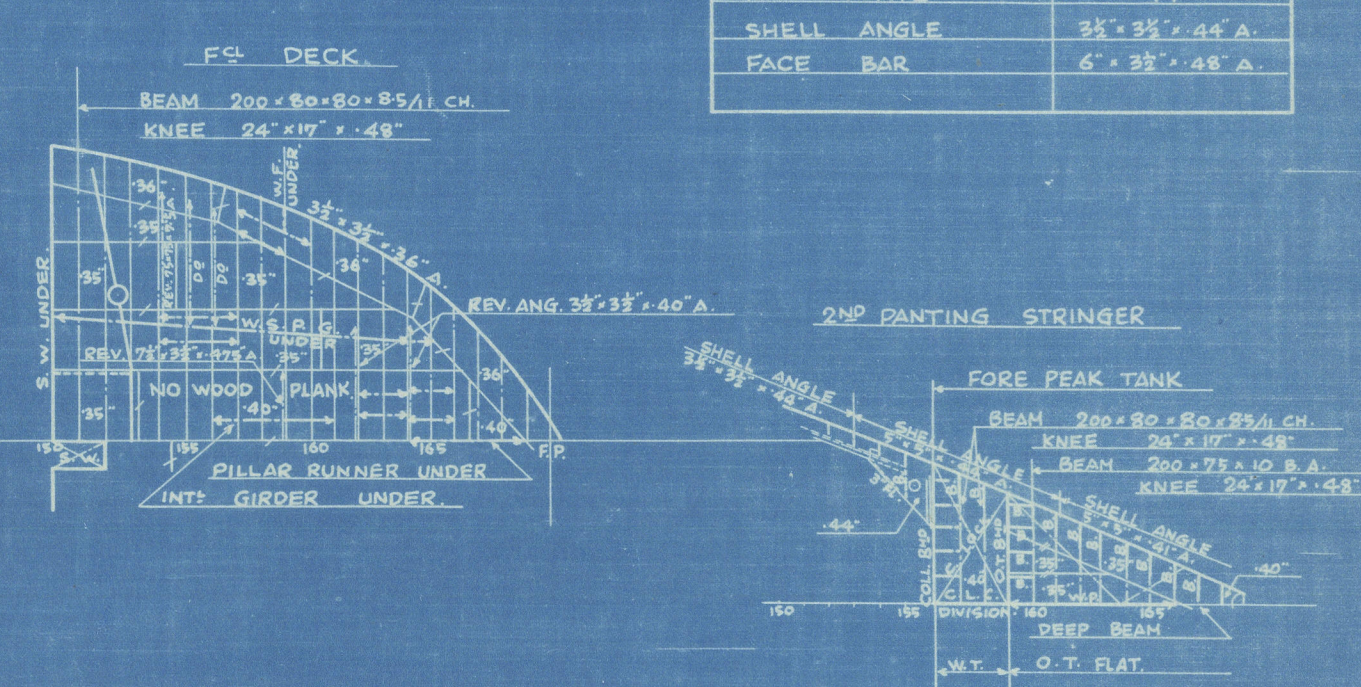
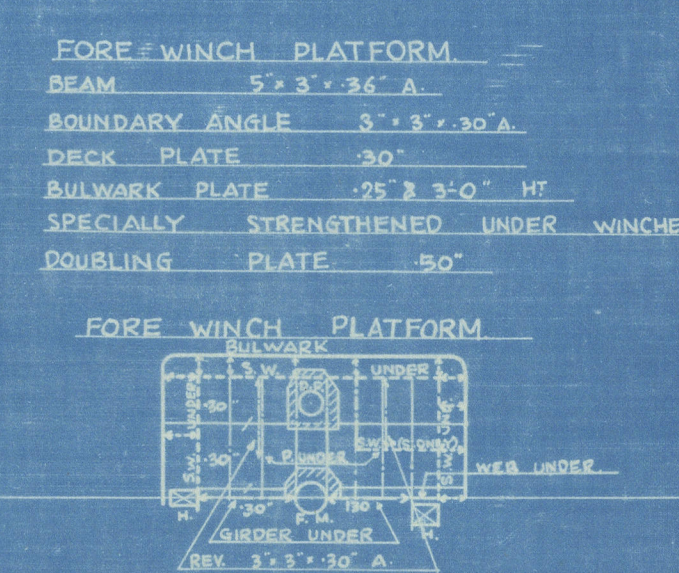
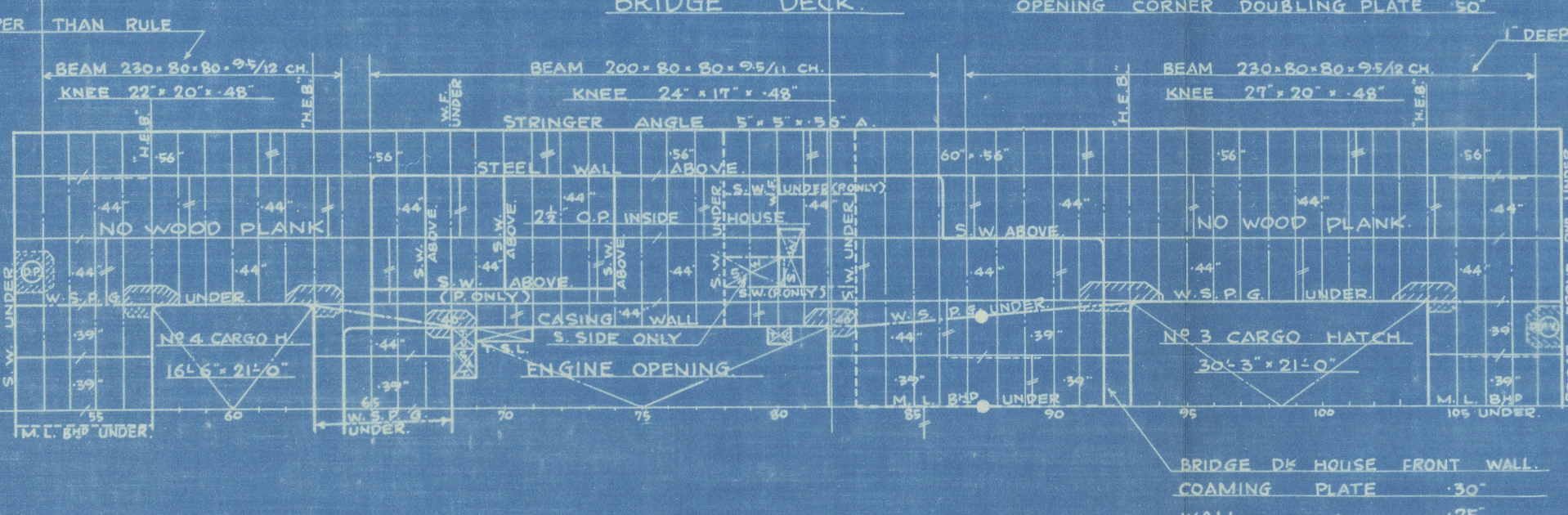



PANTING STRINGER	
IN	FORE PEAK TANK
STRINGER PLATE	36" x .40"
PL BKT KNEE	18" x .40"
SHELL ANGLE	5" x 5" x .40" A
PANTING BEAM	230 x 20 x 9.0 x .40 x 50
BEAM KNEE	33" x 25" x 5" x .40
DEEP BEAM	21" x 44" x 3" x .40
IN HOLD	
INT'V PLATE	.44"
SHELL ANGLE	35" x 35" x .44" A
FACE BAR	6" x 35" x .48" A



Nagasaki Report No.1955.

S.Nº 551
M.S. "NICHIO-MARU"


 © 2020
 Lloyd's Register
 Foundation

M.V. "N I C H I Y O M A R U".

Nagasaki Report No.1955.

S.Nº 551

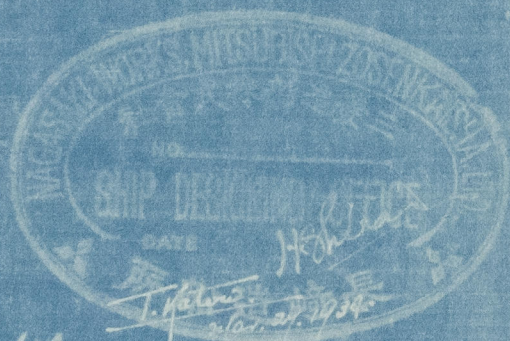
M.S. "NICHIO-MARU"

CONSTRUCTION PROFILE & DECK PLAN

(FINISHED PLAN.)

SCALE 1/16 INCH TO 1 FT

435'-0" x 58'-6" x 32'-10"



K. Hibana
3.1934.



© 2020

Lloyd's Register
Foundation

007958-007966-0257

007958-007966-0257