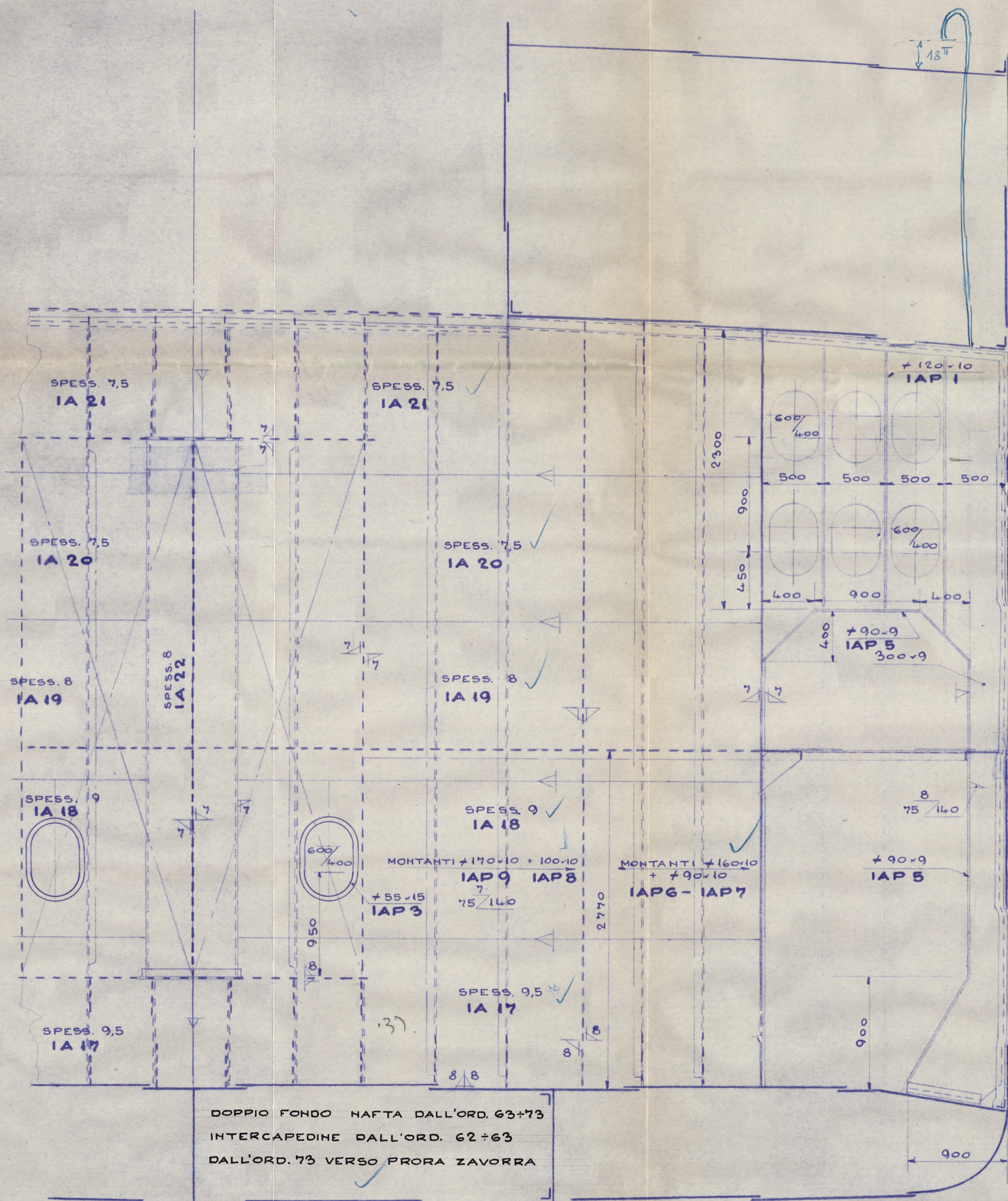


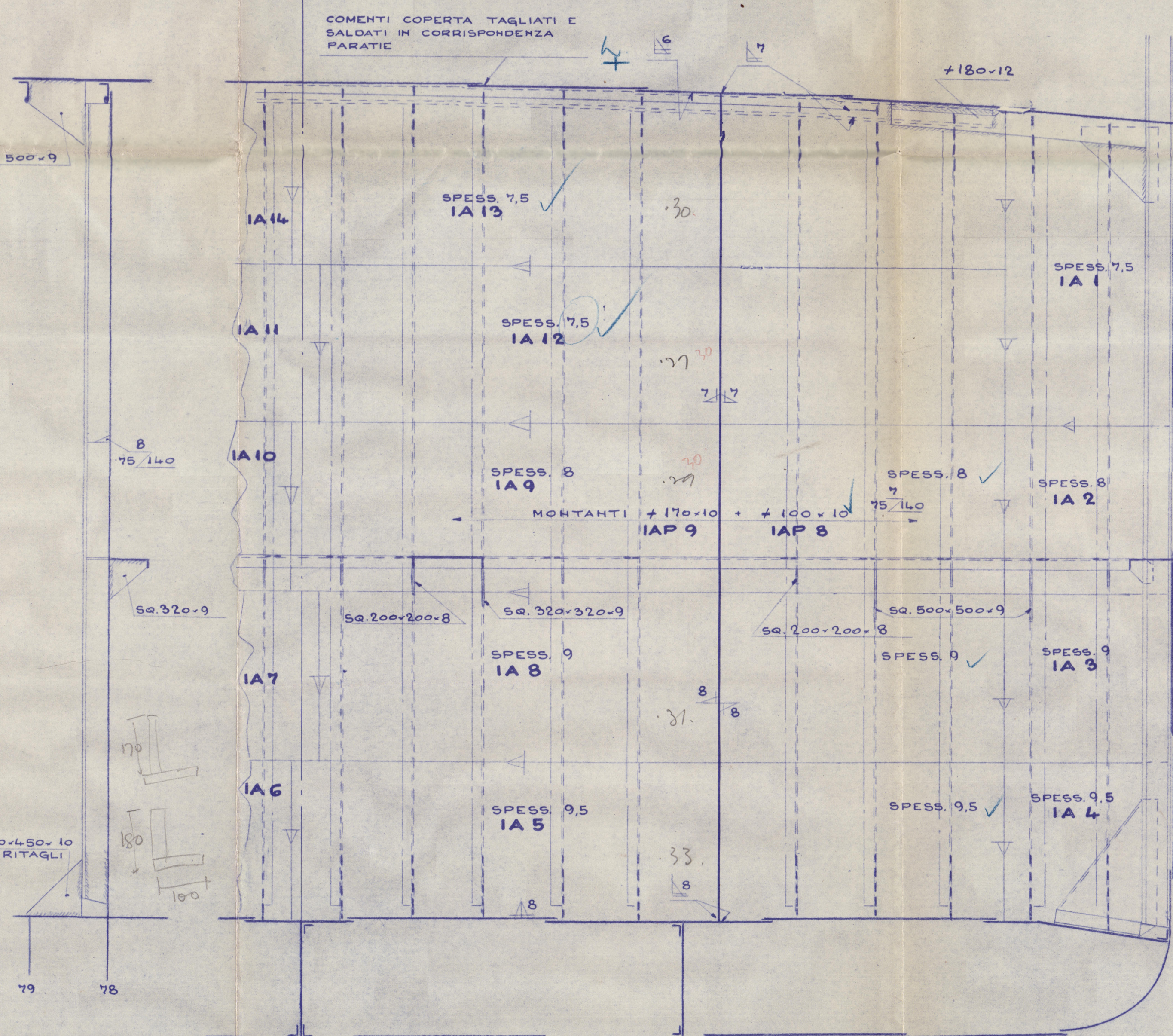
PARATIA STAGNA ALL'ORD. 74

VISTA DA POPPA
SCALA 1:15



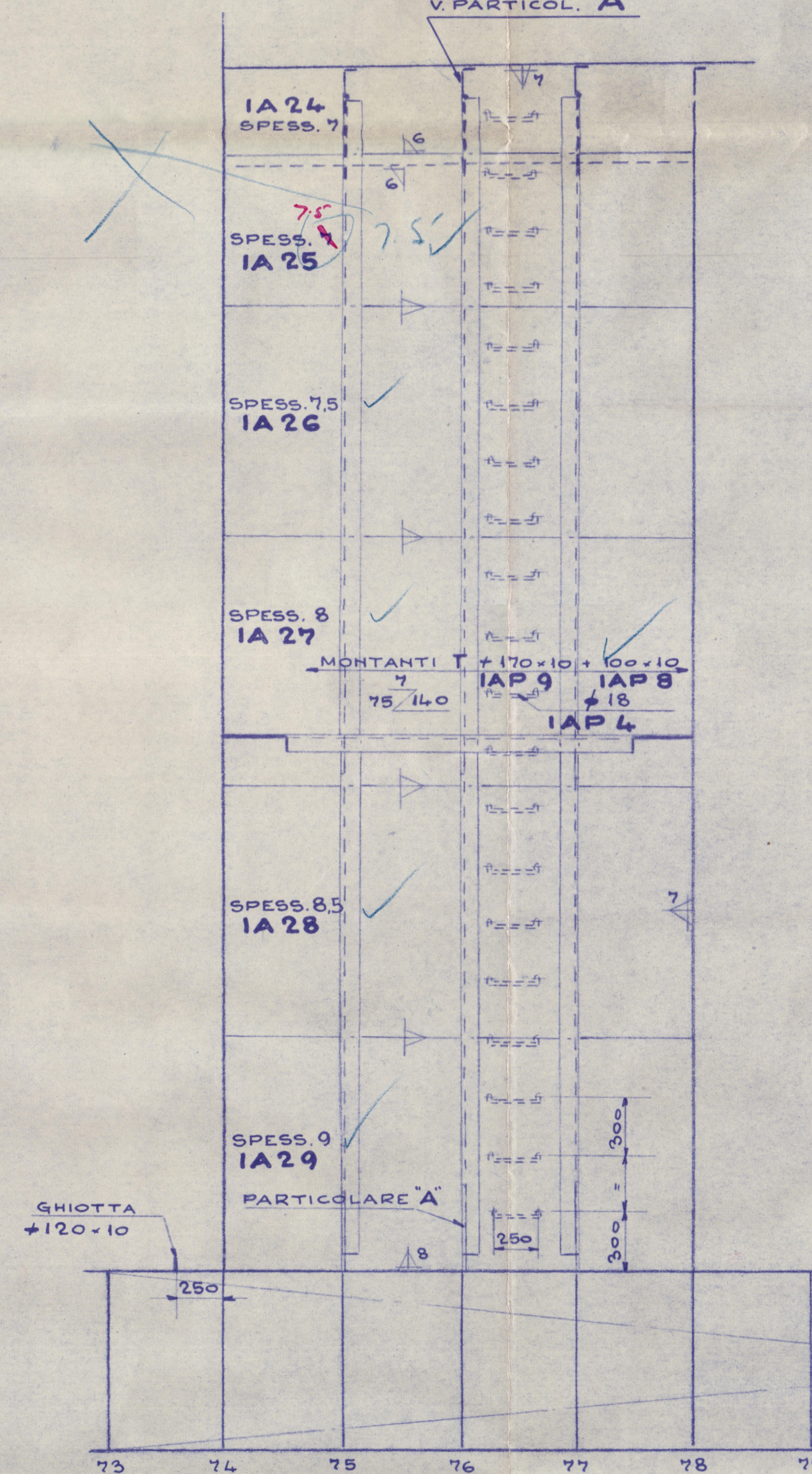
PARATIA STAGNA ALL'ORD. 78

VISTA DA POPPA



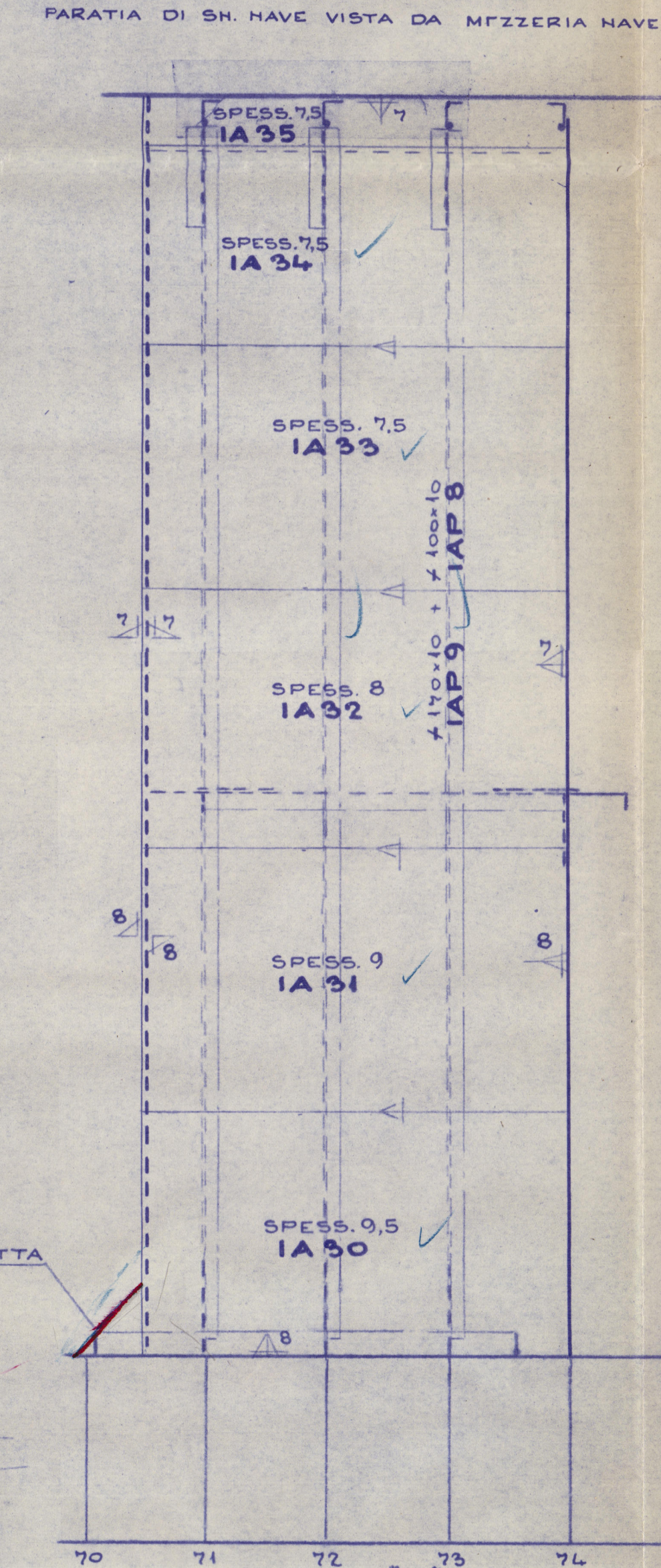
PARATIA LONGITUDINALE LATERALI

A 5200 mm. DALLA MEZZERIA NAVE
DS. E SH. SIMMETRICHE
VISTA DA MURATA

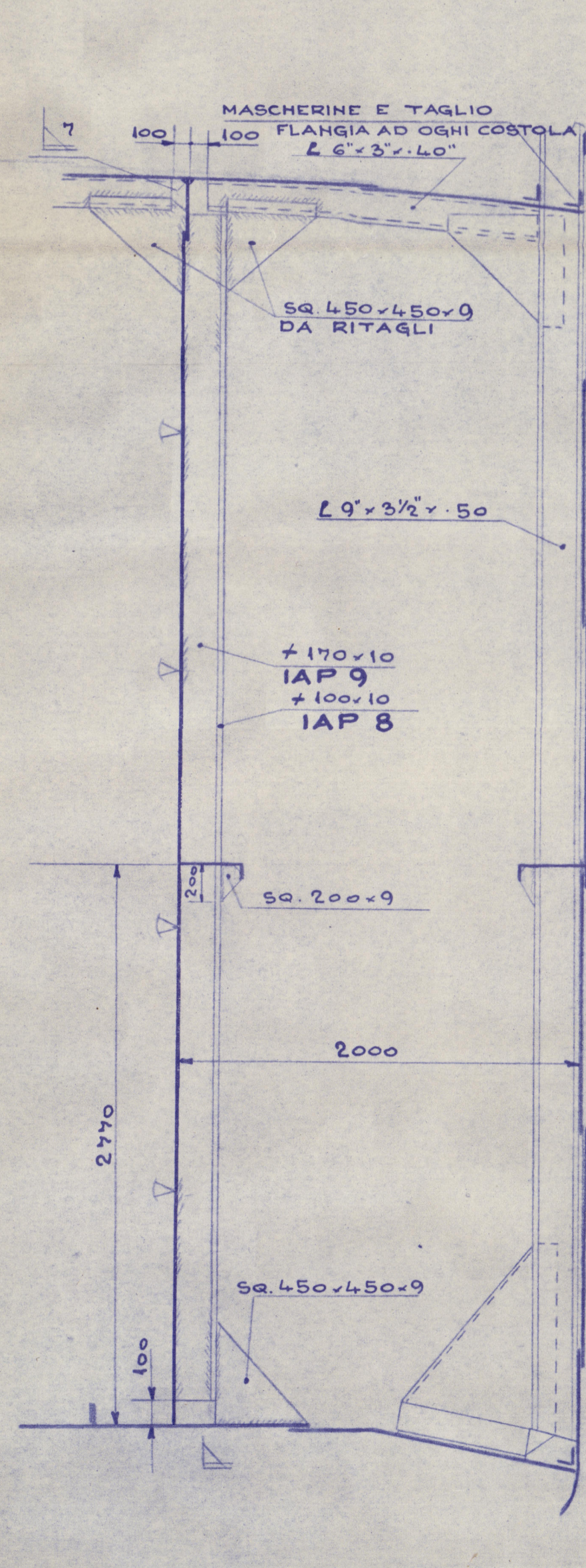


PARETI LONGITUDINALI LATERALI

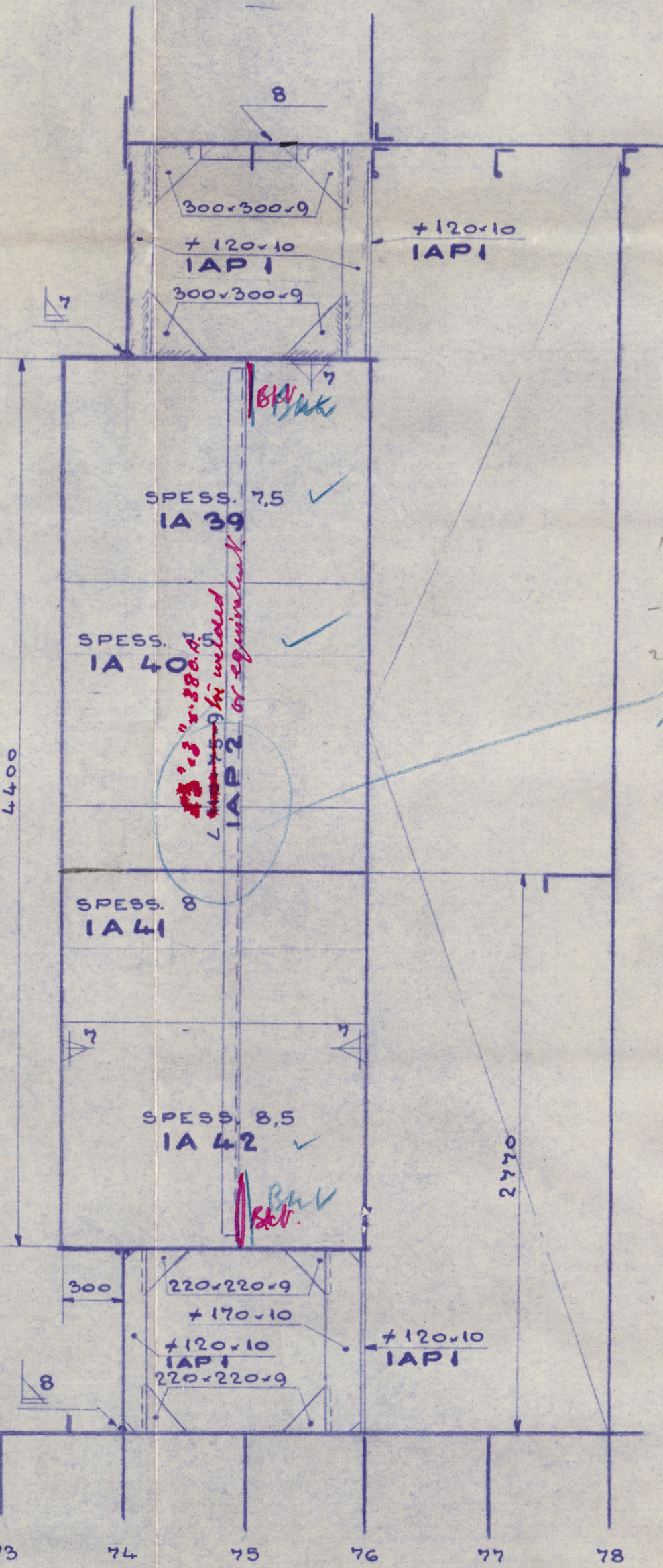
A 2000 mm. DALLA MURATA
DR. E SH. SIMMETRICHE



SEZIONE ALL'ORD. 72



PARETE DIVISORIA CASSE SERVIZIO

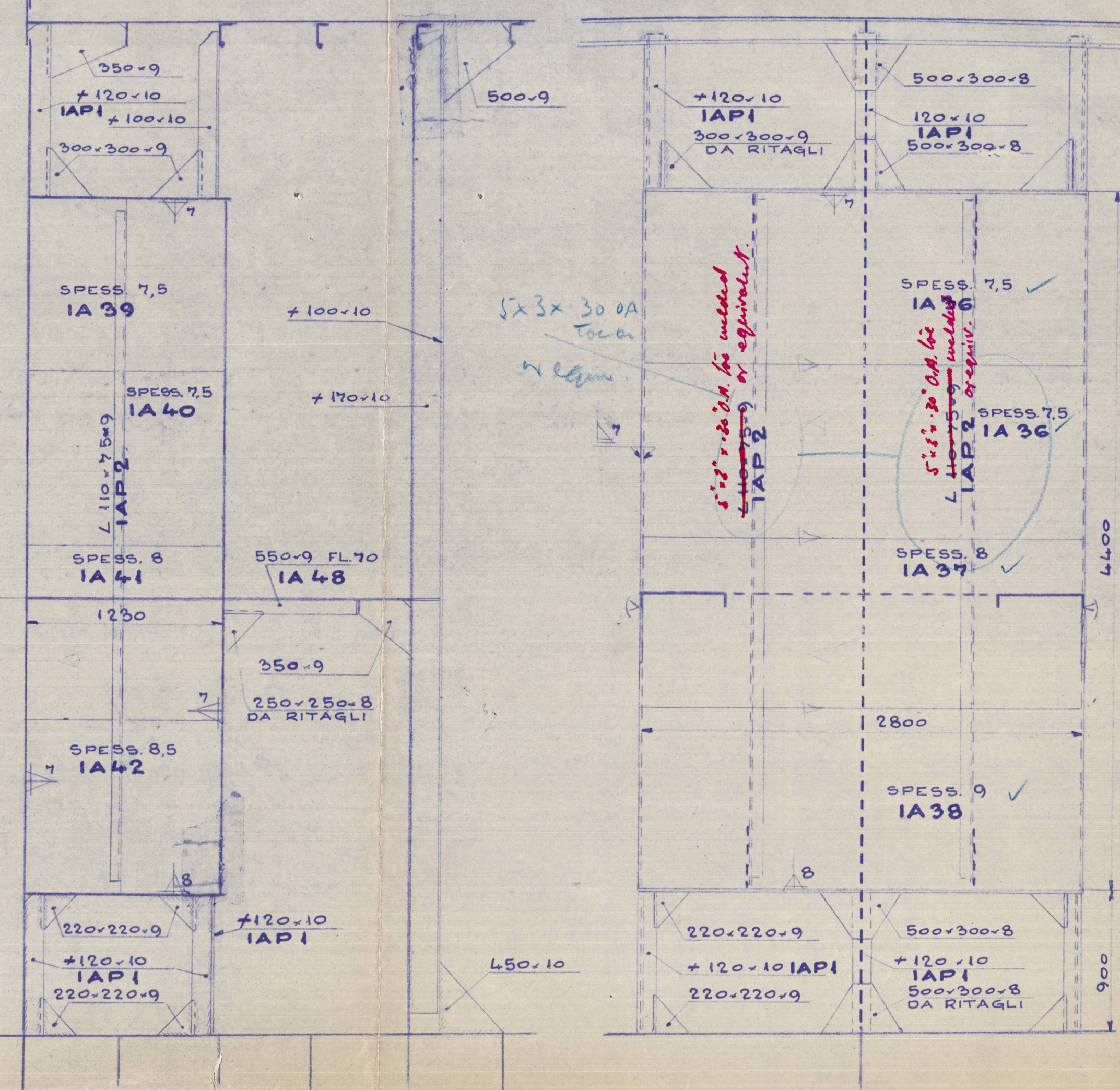


PARETI LATERALI CASSE SERVIZIO

VISTA DA MEZZERIA NAVE

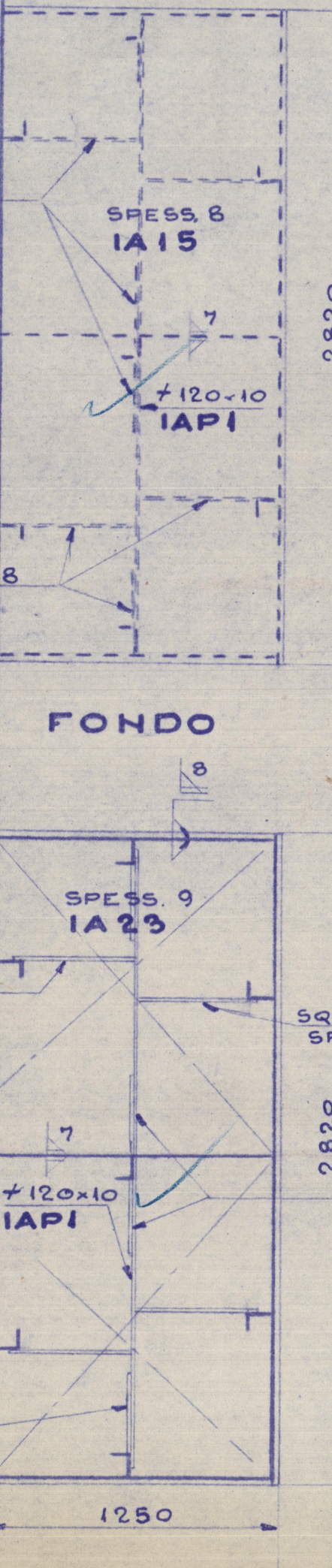
PARETE POSTERIORE CASSE SERVIZIO

ORDINATA 76 - VISTA DA PRORA



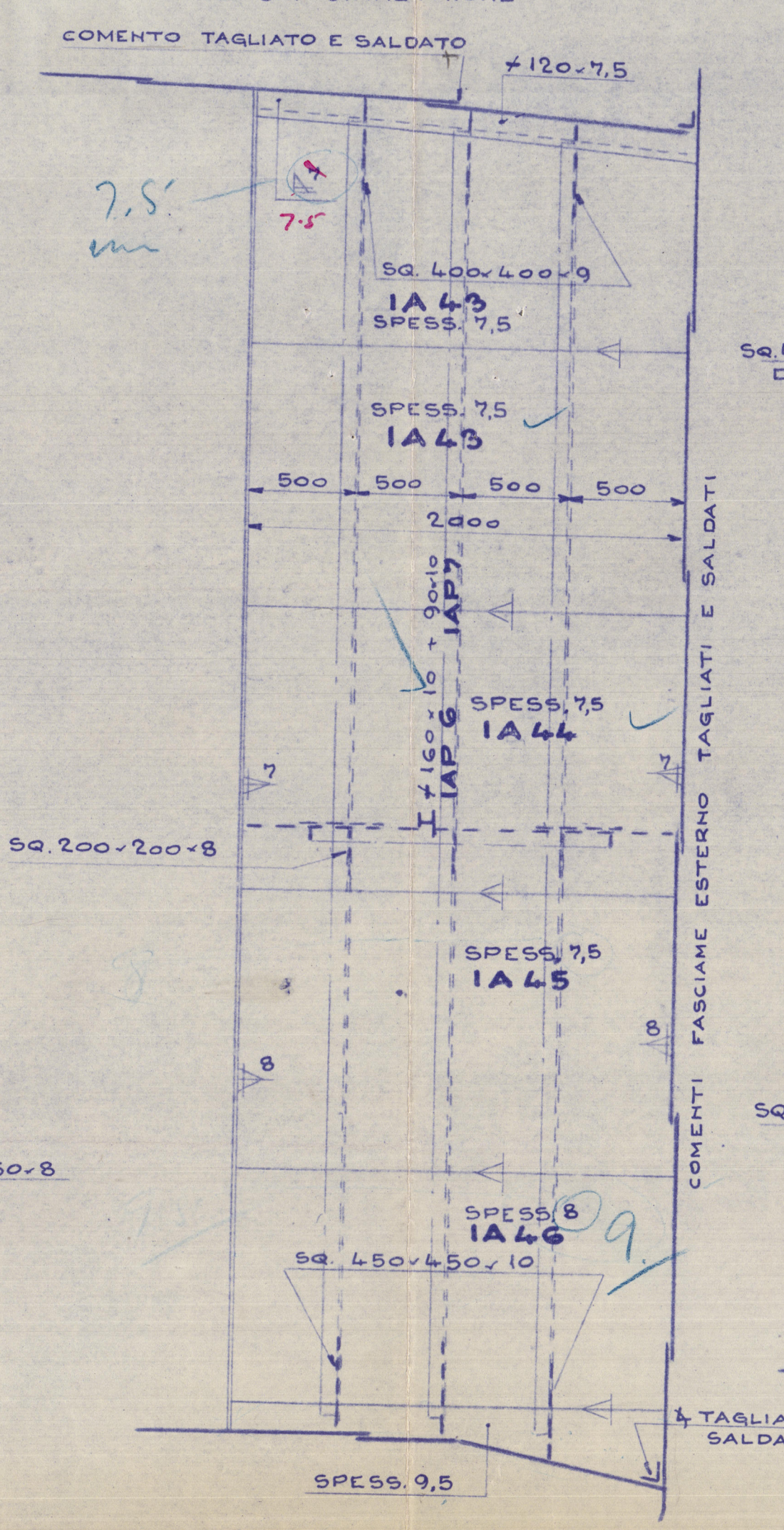
TETTO CASSE SERVIZIO

ORDINATA 76 - VISTA DA PRORA

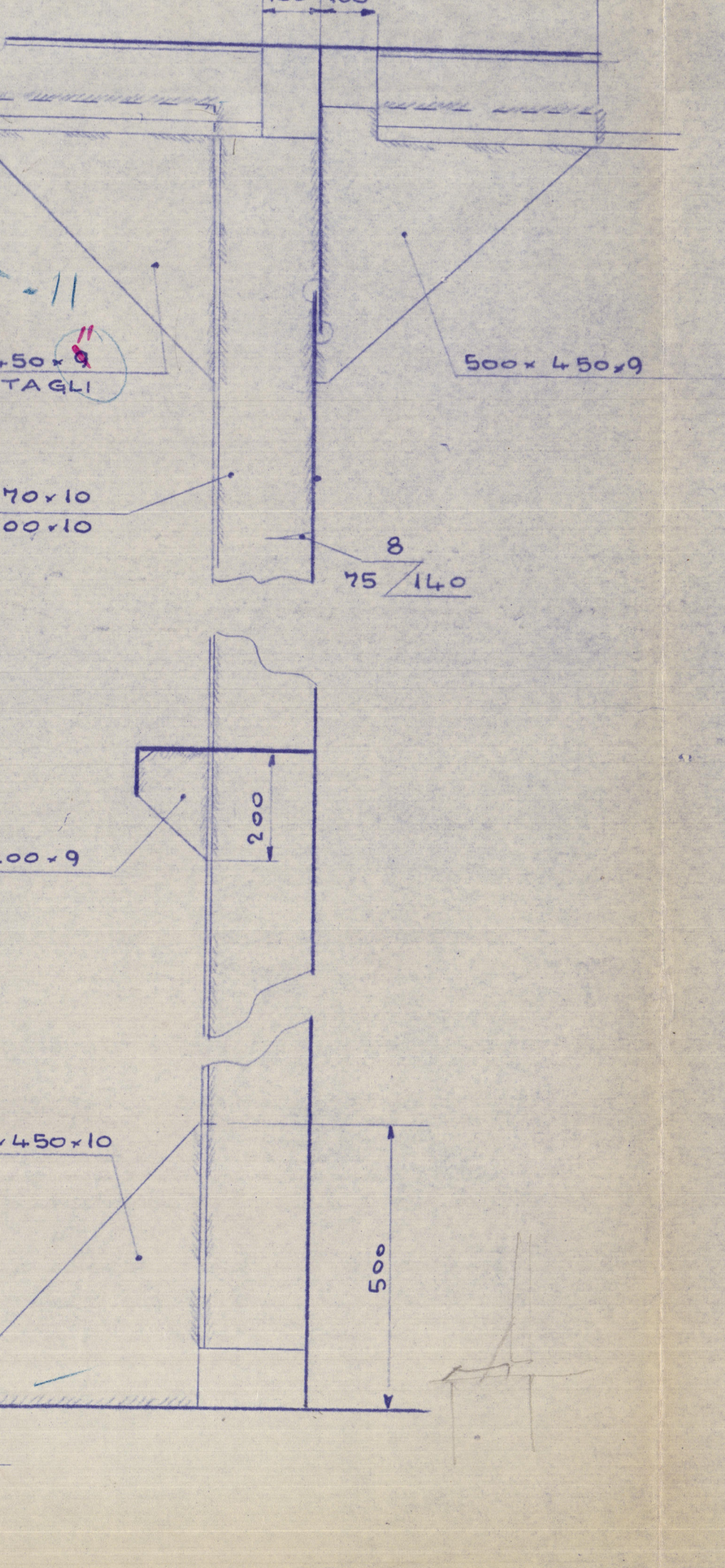


PARETE CISTERNE FRA ORD. 70-71

DR. E SH. SIMMETRICHE



PARTICOLARE A



MARKA	PEZZI	DIMENSIONI	SPESSE	MATER	OSSERVAZIONI
IA 43	2	4050 x 1200	7,5	A.M.S.	
IA 42	1	4050 x 1100	8,5		
IA 41	1	4050 x 1100	8		
IA 40	1	4050 x 1100	7,5		
IA 39	1	4050 x 1100	7,5		
IA 38	1	2850 x 1100	9		
IA 37	1	2850 x 1100	8		
IA 36	1	5650 x 1100	7,5		
IA 35	1	4300 x 650	7,5		
IA 34	1	4300 x 1000	7,5		
IA 33	1	4300 x 1200	7,5		
IA 32	1	4300 x 1300	8		
IA 31	1	4300 x 1300	9		
IA 30	1	4300 x 1200	9,5		
IA 29	1	4900 x 1200	9		
IA 28	1	4900 x 1300	8,5		
IA 27	1	4900 x 1300	8		
IA 26	1	4900 x 1200	7,5		
IA 25	1	4900 x 830	7		
IA 24	1	2450 x 1000	7		
IA 23	1	2850 x 1250	9		
IA 22	1	4400 x 1350	8		
IA 21	2	4700 x 1300	7,5		
IA 20	2	4600 x 1200	7,5		
IA 19	2	4400 x 1300	8		
IA 18	2	4400 x 1300	9		
IA 17	2	4700 x 1200	9,5		
IA 16	1	2800 x 1250	8		
IA 15	1	2820 x 1250	8		
IA 14	1	5350 x 1300	7,5		
IA 13	1	5500 x 1300	7,5		
IA 12	1	5350 x 1200	7,5		
IA 11	1	5500 x 1200	7,5		
IA 10	1	5350 x 1200	8		
IA 9	1	5500 x 1300	8		
IA 8	1	5350 x 1300	9		
IA 7	1	5500 x 1300	9		
IA 6	1	5350 x 1200	9,5		
IA 5	1	5500 x 1200	9,5		
IA 4	2	1350 x 1200	9,5		
IA 3	2	1350 x 1300	9		
IA 2	2	1350 x 1300	8		
IA 1	2	2500 x 1350	7,5		

MARKA	PEZZI	DIMENSIONI	SPESSE	MATER	OSSERVAZIONI
IAP 9	240	+ 170	10		
IAP 8	240	+ 110	10		
IAP 7	61	+ 90	10		
IAP 6	61	+ 160	10		
IAP 5	12	+ 90	9	A.M.S.	
IAP 4	37	+ 18			
IAP 3	12	+ 55	15		
IAP 2	24	+ 110 - 75	9		
IAP 1	37	+ 120	10		

S.S. "IANO"
CONVERSION
TO OIL FUEL
 30/5/50
 Studio d'Ingegneria Navale
 Ing. ATTILIO BUTTAZZONI
 TRIESTE
 VIA S. CATERINA DA SIENA 1 TEL. 3-366
 PRO. "IANO"
CISTERNE NAFTA
 PROG. H. 2075 DIS. 100
 SCALA: 1:500 DIM. 1:100
 VISTO: 30/5/50