

No 136 STERNFRAME & RUDDER.

SCALE:- 1" = 1FOOT. DETAILS:- 1" = 3" = 1FOOT.

NOTES.

AREA OF RUDDER ABAFT CENTRE LINE OF PINTLES 1200 LBS. AND not exceeding 335'.

C.G. OF GRAVITY *independent*
SPEED OF SHIP *10 KNOTS.*

STERNFRAME. FORGED STEEL. GUDGEONS TO BE FORGED SOLID ON TO RUDDER POST.
ALL CAREFULLY BORED OUT IN LINE & FACED FOR PINTLES. BOSS FOR STERN TUBE TO BE ROUGH,
BORED & FACED TO SIZE GIVEN. RIVET HOLES FOR PLATING TO SIZE & PITCH GIVEN.

RUDDERFRAME. FORGED SCRAP IRON. TO HAVE SEPARATE ARMS SHRUNK & KEYED ON TO STOCK. TOP ARM
TO HAVE STOPPER. PINTLES TO BE PORTABLE & TAPERED (HAVING NO SHOULDER) WITH NUT AND
LOCKING PIN ON TOP. TOP PINTLE TO HAVE HEAD ON LOWER END AS SHOWN. TOP & BOTTOM OF ALL
PINTLE EYES TO BE SURFACED SQUARE TO CENTRE LINE OF PINTLE SO THAT WHEN FITTED, PINTLES &
NUTS MAY BE FAIR TO THEIR WORK. RIVET HOLES TO BE BORED FOR PLATE & COUNTERSUNK ON
OUTSIDE OF EACH ARM. KEYWAYS TO BE CUT.

ALL TO PASS LLOYD'S AND OWNERS SURVEYORS.
DIMENSIONS GIVEN ON THIS PLAN SHOULD BE CAREFULLY WORKED
TO AS WE ONLY PAY ON CALCULATED WEIGHTS.

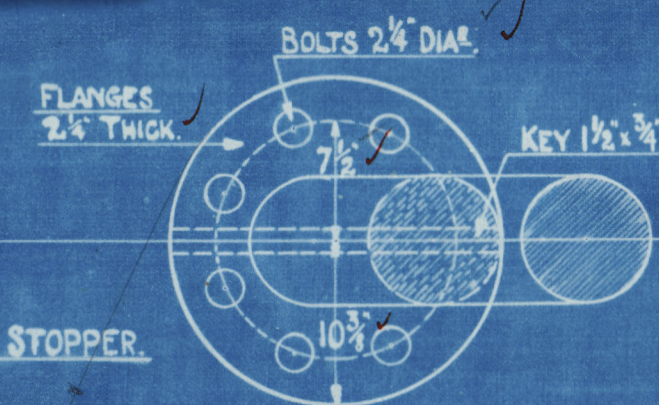
LONGITUDINAL No 19380

STOPPER TO BE FITTED ON DECK.

HEIGHT ABOVE BASE OF RUDDER 37'-0"

KEYWAY 1 1/2" x 1/2"

3/4" RIVETS, 5 DIAS. APART.



PLAN VIEW OF COUPLING.
SCALE:- 1" = 1FOOT.

3'-11 1/2"

3/4" RIVETS, 5 DIAS. APART.

1 1/2" RIVETS, 5 DIAS. APART.

PLATE 1"
4 1/2" RIVETS, 4 DIAS. APART.

NO HOLES
ROUND BOSS.

FOUR ROWS OF RIVETS
IN WAY OF SCARF.

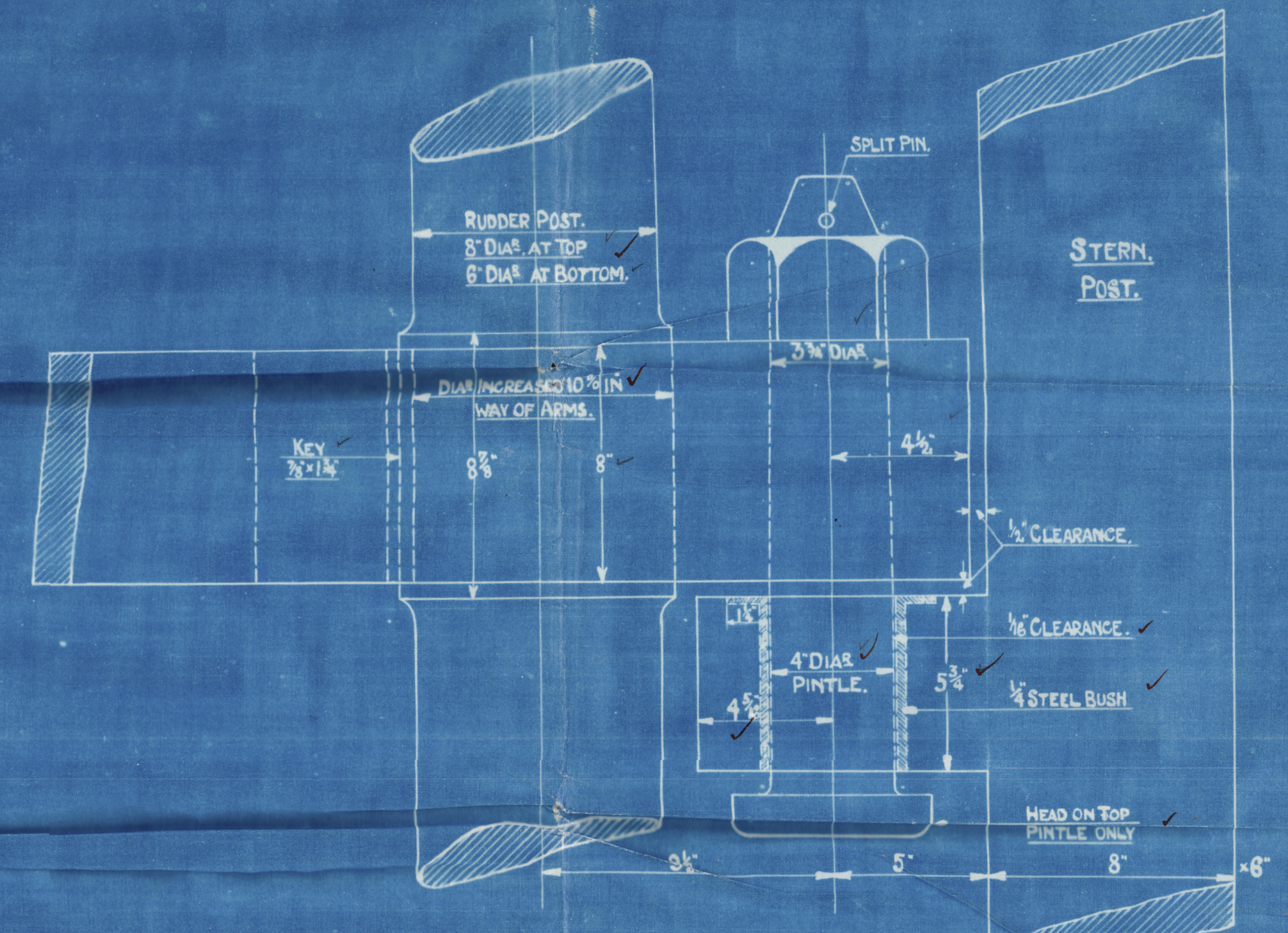
Rivets should not more than 5 diam apart in any row.

1 1/2" RIVETS, 5 DIAS. APART.

1" RIVETS.

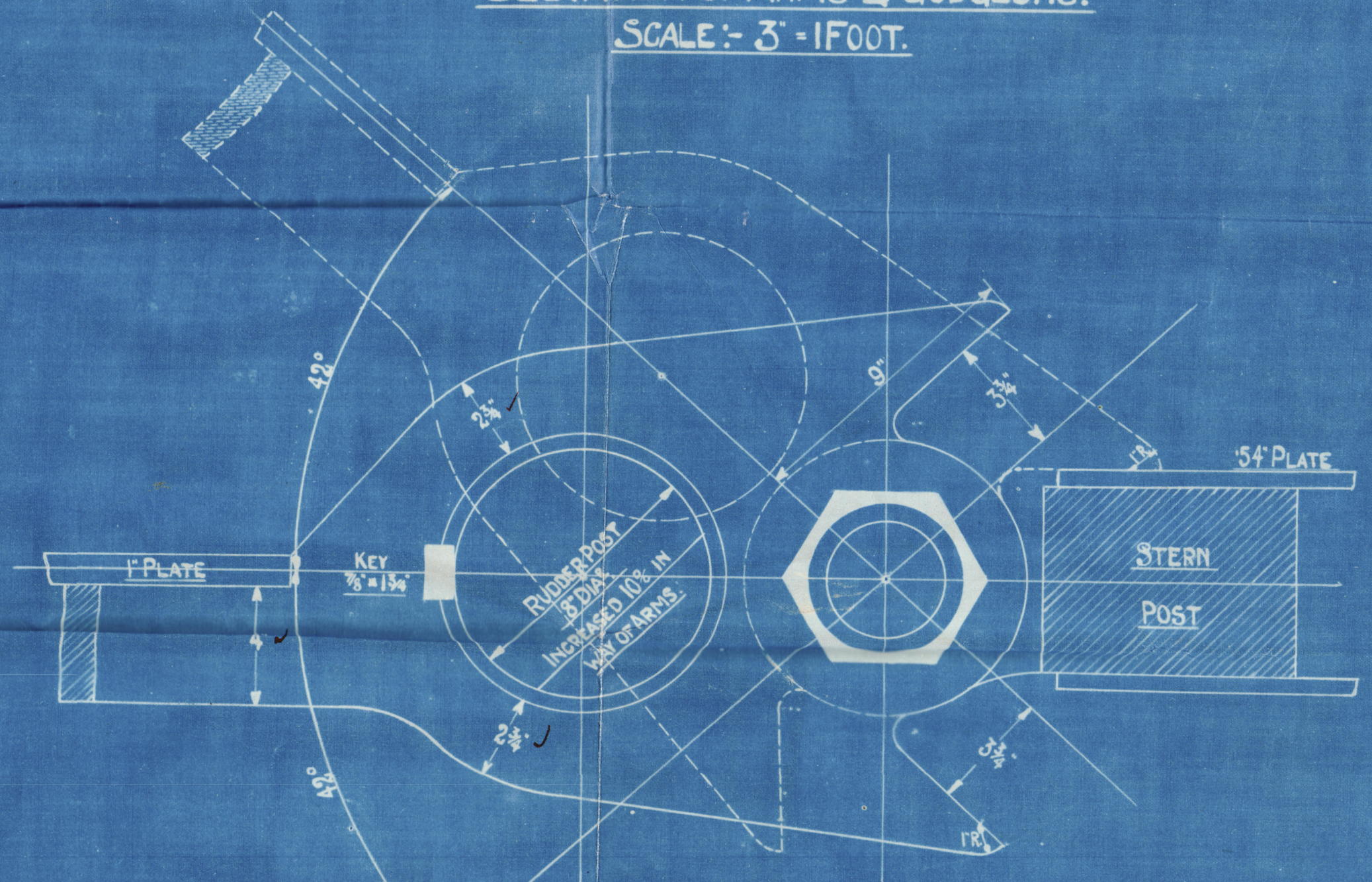
1'-7 1/2"

PLAN.



ELEVATION OF ARMS & GUDGEONS.

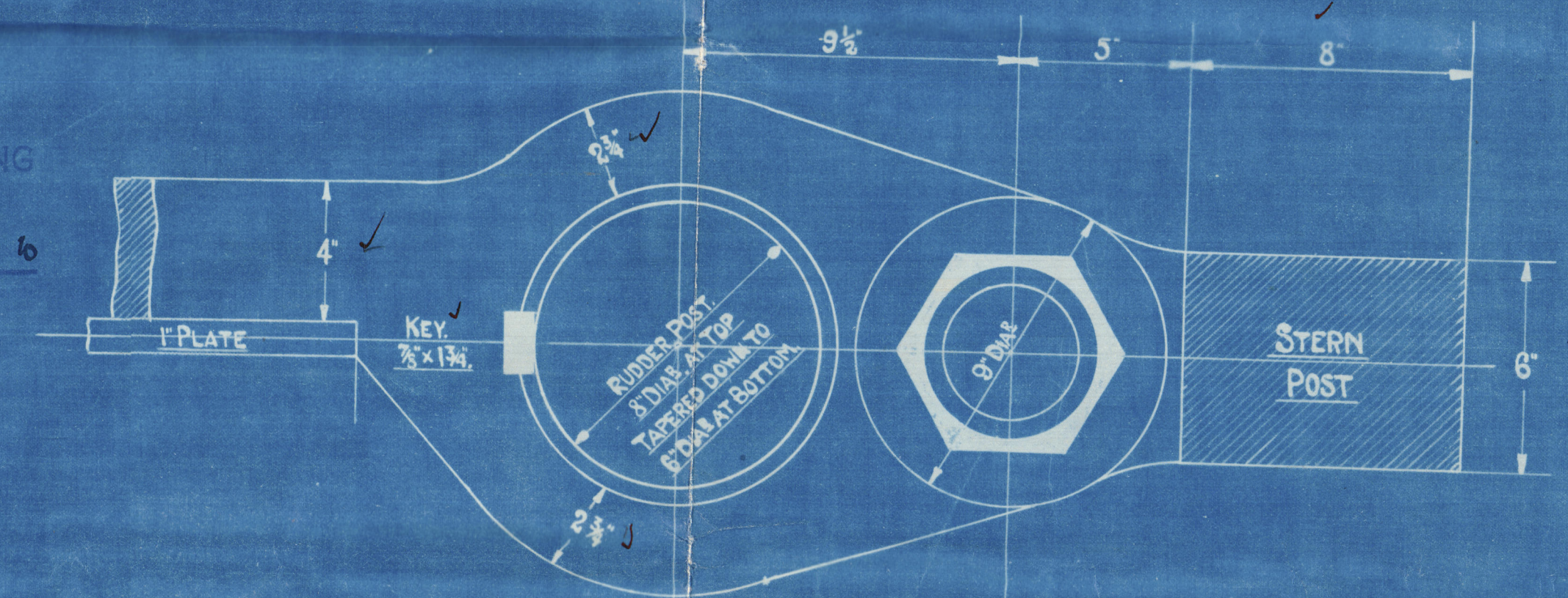
SCALE:- 3" = 1FOOT.



PLAN VIEW OF STOPPER ARM & GUDGEON.

SCALE:- 3" = 1FOOT.

RUDDER ARMS 8" x 4"
TAPERED DOWN TO 8" x 1".



PLAN VIEW OF ARMS & GUDGEONS.

SCALE:- 3" = 1FOOT.



APPROVED
LLOYD'S REGISTER OF SHIPPING

Management Ltd

DATE 4.5.10

Geo Brown & Co.

No 136

Sternpost & Rudder.

^{or}
S. S. Terneuzen

Gr. Report No. 17977

Antil

© 2020

Lloyd's Register
Foundation

007947-007957-0131