

2 MAY 1945

Shd. 2314.

Index No. 37555  
(For London Office only)

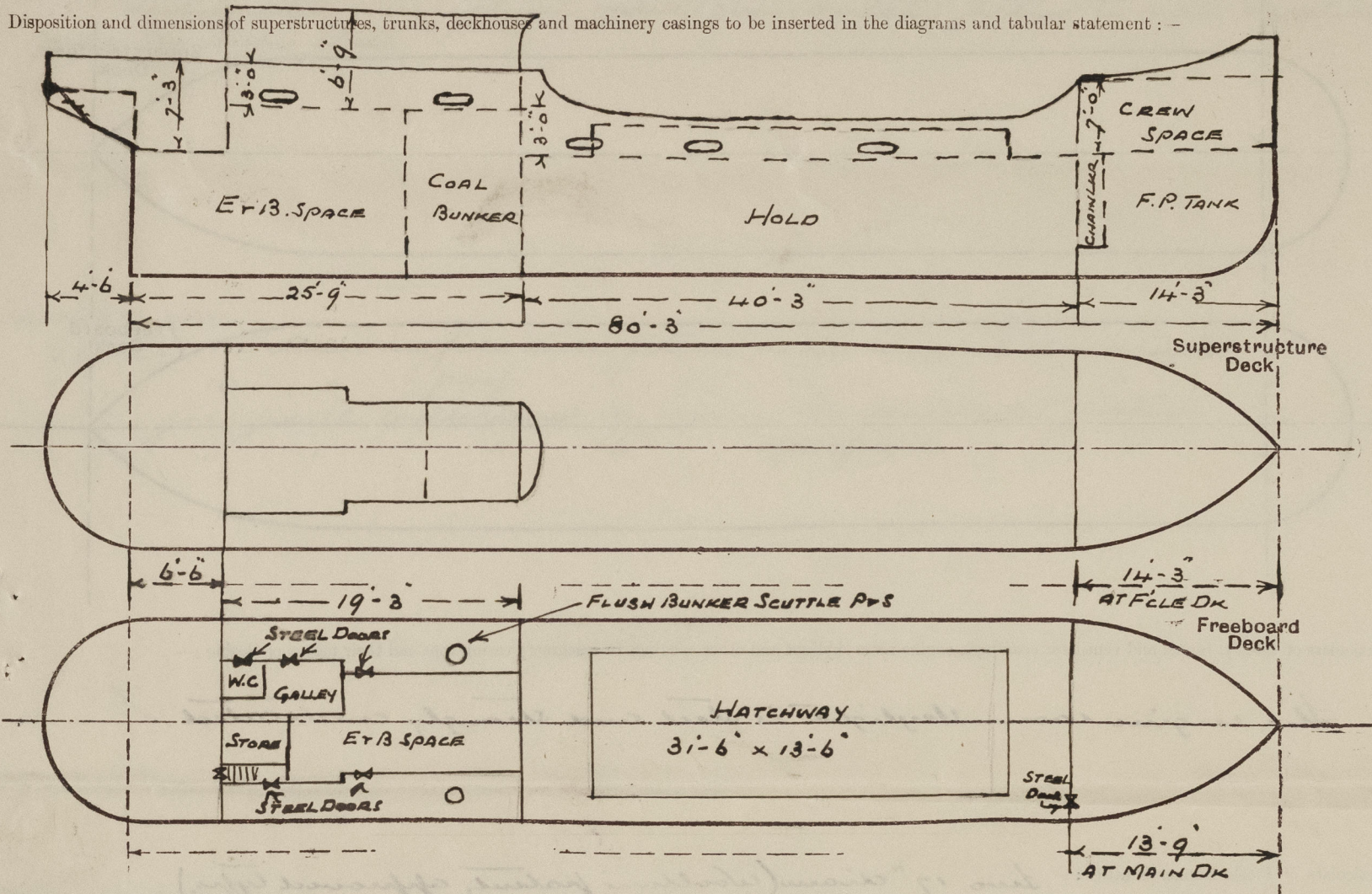
# Lloyd's Register of Shipping.

## SURVEYS FOR FREEBOARD.

### (CONDITIONS OF ASSIGNMENT.)

Ship's Name *Vic 95* Port of Survey *HULL*  
 Official Number *180436* Surveyor's Signature *F. L. Palmer*  
 Nationality and Port of Registry *British HULL* Date of Survey *During Construction*

Disposition and dimensions of superstructures, trunks, deckhouses and machinery casings to be inserted in the diagrams and tabular statement: -



Particulars of Superstructures, Trunks, Casings, Deckhouses.

	Coaming	Plating	Stiffeners	Spacing	End Attachments of Stiffeners	Size of Openings	Height of Sills	Height of Casings	
Poop Bulkhead ...	NONE	.26	2½ x 2½ x 25	2'-6"	NONE	ONE IN ENCLOSED CASING	✓	3'-0" ABOVE RQ DK 4'-3" BELOW "	✓
Raised Quarter Deck Bulkhead ...	"	.26	4½ x 2½ x 30	2'-4½"	BKTS AT TOP	NONE	✓	3'-0"	✓
Bridge, After Bulkhead ...									
Bridge, Forward Bulkhead ...									
Forecastle Bulkhead ...	NONE	.20	2½ x 2½ x 25	2'-1½"	NONE	4'-6" x 1'-9"	21"	7'-0"	✓
Trunk, Aft ...									
Trunk, Forward ...									
Exposed Machinery Casings on Freeboard or Raised Quarter Decks ...	NONE	3/16"	3 x 5/16 FLAT (WELDED)	2'-4½"	13KTS AT TOP	4'-11½" x 1'-11½"	18"	6'-9"	✓
Exposed Machinery Casings on Superstructure Decks ...									
Machinery Casings within Superstructures not fitted with Class I Closing Appliances ...									
Deckhouses on Flush Deck Ships ...									

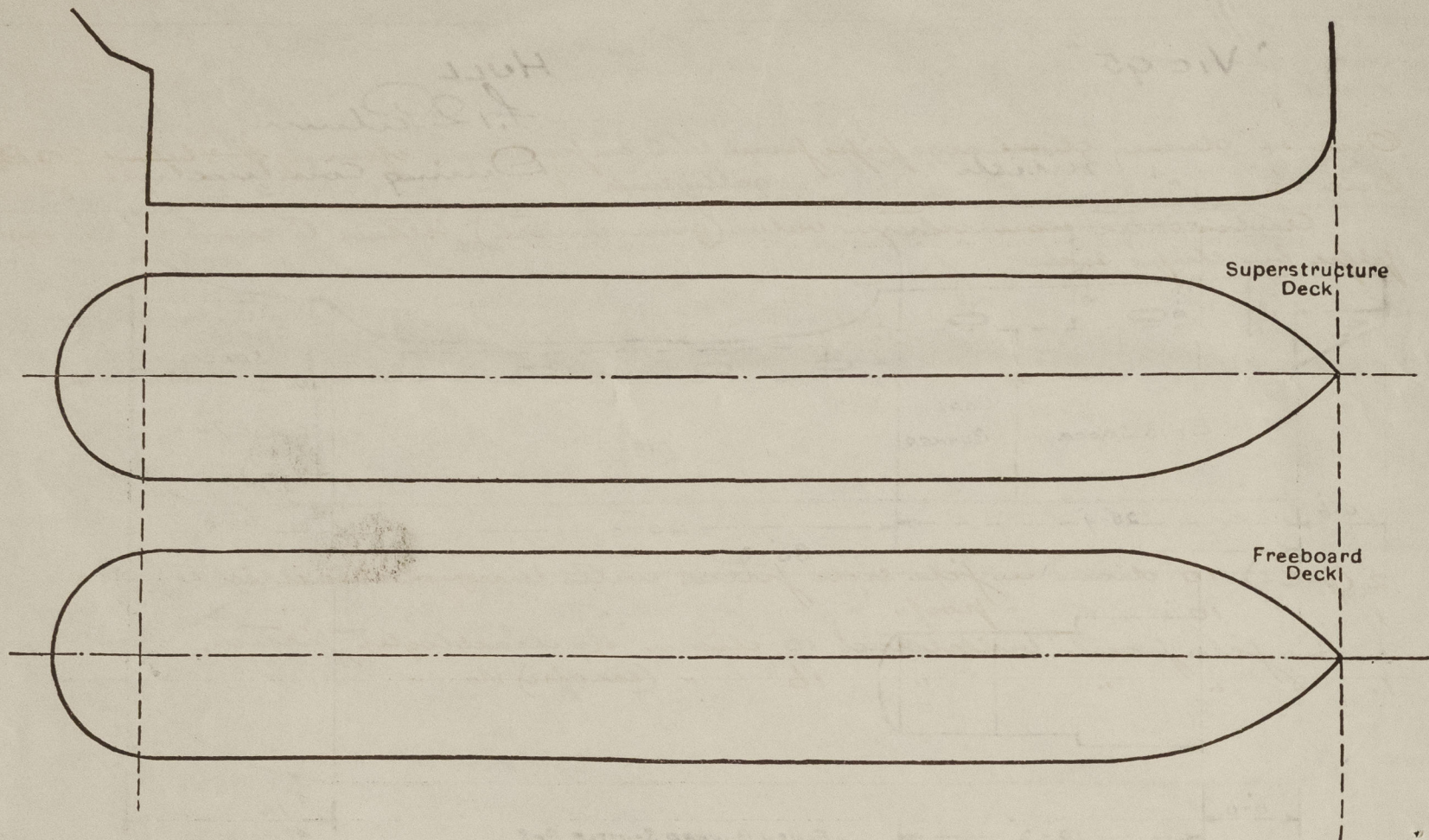
Particulars of Closing Appliances (state if capable of being manipulated from both sides).

Poop Bulkhead ...	ONE OPENING 7'-0" x 2'-6" IN ENCLOSED CASING ON SS. ✓
Raised Quarter Deck Bulkhead ...	✓ No openings.
Bridge, After Bulkhead ...	✓
Bridge, Forward Bulkhead ...	✓
Forecastle Bulkhead ...	ONE STEEL HINGED DOOR OPERATED FROM BOTH SIDES. ✓
Exposed Machinery Casings on Freeboard or Raised Quarter Decks ...	FIVE (3 PS + 2 SS) STEEL " " S " " " " ✓
Exposed Machinery Casings on Superstructure Decks ...	✓
Machinery Casings within Superstructures not fitted with Class I Closing Appliances ...	✓
Deckhouses on Flush Deck Ships ...	✓



### PARTICULARS OF PROTECTION TO OPENINGS, ETC.

The following diagrams should be used to indicate the positions of cargo and coaling hatchways, gangway, cargo and coaling ports, ventilators, companionways, etc., which would affect the seaworthiness of the ship :—



Particulars of fiddley, funnel and ventilator coamings, engine room skylight and other openings in machinery casing tops and their means of closing :—

The engine room skylight is stark and strongly constructed. ✓

Particulars of Flush Bunker Scuttles:— Two 17" diam (Woodlani patent, approved type.)  
fitted with chain attachments on the underside to a deck beam. ✓

Particulars of Companionways :—

None. ✓

Particulars of Ventilators in exposed positions on freeboard and superstructure decks :—

Two	cool ventilators	on foreboard deck to hold 10" diam.	consuming	36" x 34"	✓	
Two	"	" file deck to crew's space	8"	"	36" x 30"	✓
One	"	" prop " " cabin	6"	"	30" x 30"	✓

All ventilators are constructed in accordance with the Rules and are provided with wood plugs and canvas covers. ✓

Particulars of Air Pipes in exposed positions on freeboard, raised quarter, or superstructure decks :—

Give C.I. air pipe on file deck 2'-0" high  $\times$  1  $\frac{1}{2}$ " diam to fore peak tanks.  
Wood plug with chain attachment provided for closing the opening. ✓

Particulars of Gangway Cargo and Coaling Ports:—

None. ✓

Vic 95.

Particulars of Scuppers and Sanitary Discharge Pipes :—

One 14" diam discharge pipe from W.C. on port side. Opening 2'-3" below 12 Q. Deck. ✓  
One 1½" " " " " galley sink " " " 2'-3" " " " ✓  
Automatic non-return valve (gun-ventil) fitted to each discharge  
pipe on ship's side. ✓

Particulars of Side Scuttles:—

Particulars of Side Scuttles:—

2. (p.c.s) 10" diam in file side fitted with hinged deadlights.  
1. " 10" " "prop " "  
1. " in file front bulkhead 10" diam. No deadlight fitted.  
1. " " " " 16" " (exc ops) No "

Vertical distance of Sill of lowest Side Scuttle above top of keel.....13'-0"

Particulars of Guard Rails :—

Fixed round sides and after end of fore-castle deck.  
" " poop. ✓

$\frac{x}{1-b}$   
 $\frac{x}{1-b}$

Particulars of Gangways, Lifelines, etc. :—

One lifeline (p.c.s) from fore end of 12. Q. ducts to fore cast the  
bottle head.

Particulars of Freeing Arrangements.						
	Length of Bulwark	Height of Bulwark	Size of Freeing Ports	Number each side	Area each side	Rule area each side
After Well ... ..	19.25	3'-0"	4'-6" x 1'-0"	Two	9 $\frac{1}{2}$	✓ 8.4 $\frac{1}{2}$
Forward Well ... ..	40.25	3'-0"	4'-6" x 1'-0"	Four	18 $\frac{1}{2}$	* ✓ 15.73 $\frac{1}{2}$

State position of each freeing port ... .. { After Well :—  
 FROM R.Q.DK FORWARD BULK<sup>2</sup> TO FORE END OF EACH OPENING  
 1'-6" AND 11'-6"  
 FROM FLE BULK<sup>2</sup> " " " " " "

State whether the freeing ports are fitted with shutters, bars, or rails, and give particulars of such:— ONE 2" FLAT BAR.

Additional area where sheer is less than standard. ✓

\* Includes 50% excess for no shear.



PARTICULARS OF PROTECTION TO OPENINGS, ETC.

HATCHWAYS ON FREEBOARD AND SUPERSTRUCTURE DECKS.										
Description of Hatchway		...	...	...	MAIN					
Dimensions of Hatchway		...	...	...	31'-6" x 13'-6"					
COAMINGS	{	Height above Deck	...	...	2'-3"					
		Thickness	Sides	...	.36	✓				
			Ends	...	.36	✓				
		Stiffeners	...	...	✓					
		Brackets, Stays	...	...	.30	Spaced not more than 10'-0"				
HATCH BEAMS	{	Number	...	...	7					
		Spacing	...	...	4'-0"					
		Scantling and Sketch	...	...	8" x 6" x 35 lbs	✓				
		Bearing Surface	...	...	3 1/2"	✓				
FORE AND AFTERS	{	Number	...	...						
		Spacing	...	...						
		Unsupported Lengths	...	...	NONE	✓				
		Scantling and Sketch	...	...						
		Bearing Surface	...	...						
HATCH COVERS	{	Material	...	...	WOOD					
		Thickness	...	...	2 1/2"	✓				
		How fitted	...	...	F&A	✓				
		Bearing Surface	...	...	2 1/2"					
Spacing of Cleats		...	...	...	2'-0"	✓				
Number of Tarpaulins		...	...	...	2					
*Are wood fore and afters steel shod at all bearing surfaces? <input checked="" type="checkbox"/> YES										
Are battens and wedges efficient and in good condition? <input checked="" type="checkbox"/> YES										
Are tarpaulins in good condition and in accordance with rule requirements? <input checked="" type="checkbox"/> YES										
Are lashings provided in accordance with rule requirements? <input checked="" type="checkbox"/> YES										

Particulars of any special features:—

Extra lashings are provided for the main hatchway which constitute the special lashings for hatchways exceeding in breadth 60% of the breadth of the ship.

Endorsement at first survey and at surveys for renewal of Certificate:—

The fittings and appliances are in accordance with the particulars shown on this form (or as now modified) and are in good condition.



© 2020

Lloyd's Register Foundation