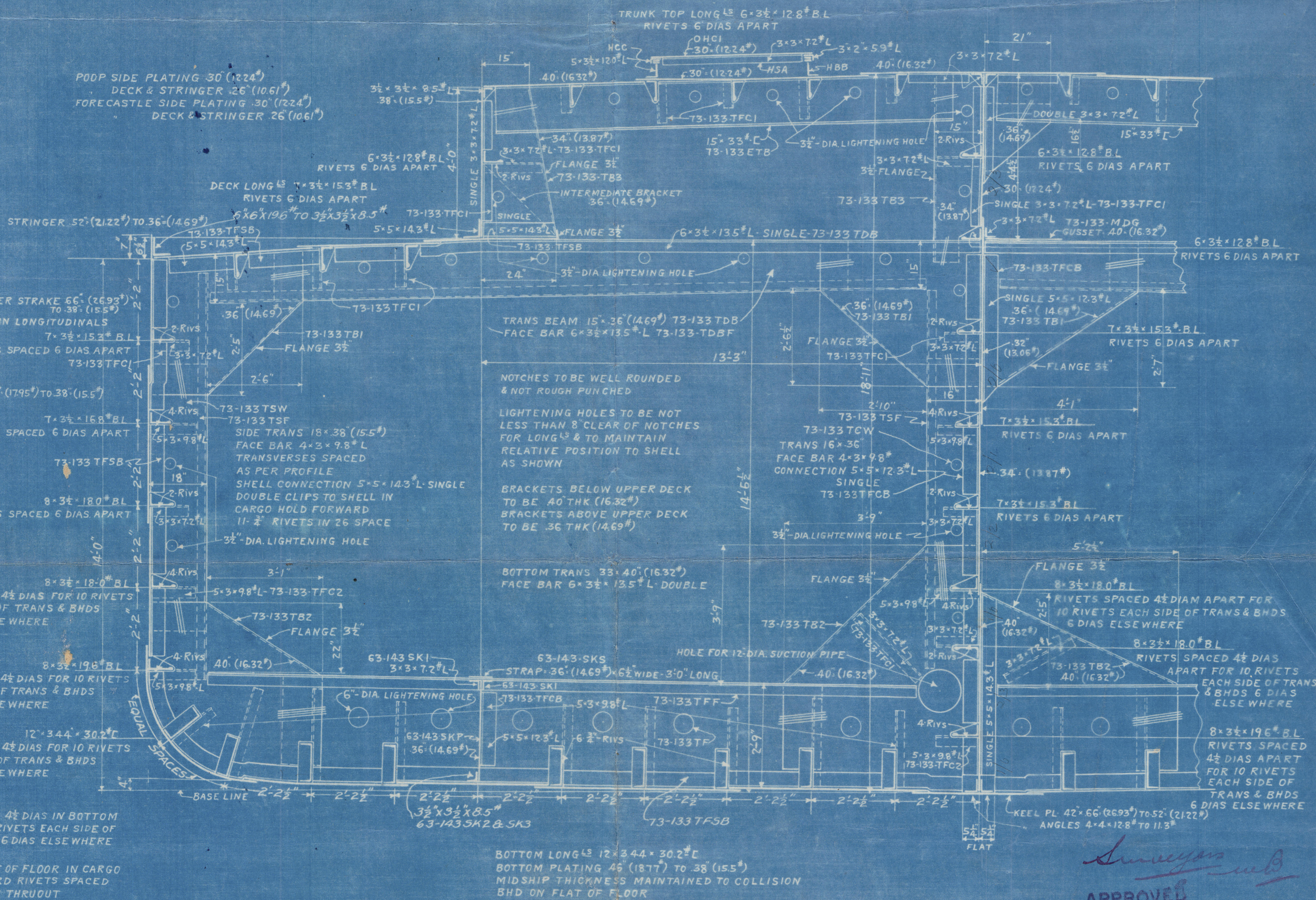
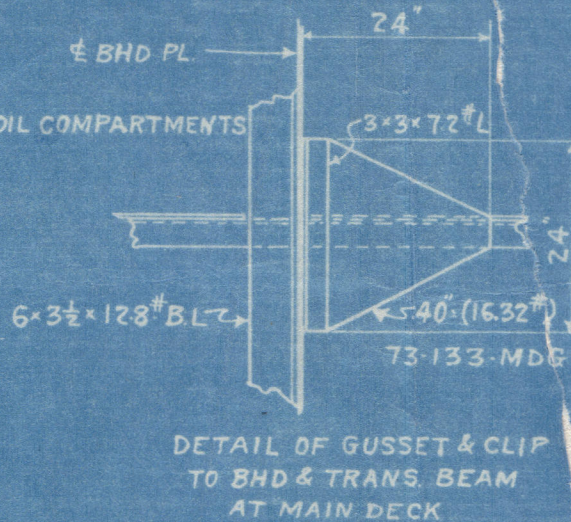


RIVETING

KEEL BUTTS QUADRUPLE OVERLAPS IN OIL TO TREBLE AT ENDS
 BOTTOM PLATING BUTTS TREBLE OVERLAPS IN OIL TO DOUBLE AT ENDS
 SIDE PLATING BUTTS TREBLE OVERLAPS IN OIL TO DOUBLE AT ENDS
 SHEER STRAKE BUTTS QUADRUPLE OVERLAPS TO DOUBLE AT ENDS
 CENTER KEEL BUTTS TREBLE RIVET OVERLAPS
 UPPER DECK STRINGER BUTTS TREBLE OVERLAPS TO DOUBLE AT ENDS CLEAR OF OIL COMPARTMENTS
 UPPER DECK PLATING BUTTS DOUBLE IN WAY OF OIL TO SINGLE AT ENDS
 TRUNK TOP & SIDE BUTTS DOUBLE RIVETED



LOOKING "AFT"

See also plan of Midship Section originally approved.

Surveyor

APPROVED

LODYS REGISTER OF SHIPING

AUG 14 1919

NEW YORK

[Signature]

PRINCIPAL DIMENSIONS	
LENGTH	210'-0"
BREADTH MLD	44'-0"
DEPTH MLD	14'-0"
LLOYDS NUMERALS	
TRANS No	5800
LONGITUDINAL No	12180
LENGTH TO DEPTH 15.00	UPPER DECK
	11.66 TRUNK TOP
EQUIPMENT No	12915
LETTER	"0"

REFERENCE PLANS	
H1051	SHELL EXPANSION
H1052	DECK & EXPANSION TRUNK
H1054	VERTICAL KEEL & CENTERLINE BULKHEAD

TO CLASS 100 A.I. LLOYDS SELF PROPELLED BARGE
 CARRYING PETROLEUM IN BULK LONGITUDINAL FRAMING

TODD SHIPYARDS CORPORATION
 NEW YORK
 TEBO PLANT

210' OIL BARGE
 MIDSHIP SECTION

SCALE 1/2" = 1'-0"

DATE 8-6-19

DRAWN BY N.V.M.

TRACED BY N.V.M.

CHECKED BY

H-1055

007938-007946-0002

MIDSHIP SECTION

TEBOS No 14 + 19

of 'Mannet Rionda' (No. 14)
New York Rpt 18776

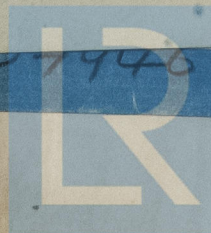
007938-007446-0002

© 2021

Lloyd's Register
Foundation

Godd

007938-007946-0002



© 2004

Lloyd's Register
Foundation