

28 DEC 1947

Port of Survey *Hull.*
Surveyor's Signature *J. Macleod*
Date of Survey *while building*

Disposition and dimensions of superstructures, trunks, deckhouses and machinery casings to be inserted in the diagrams and tabular statement : --

3' 3" AT SIDE

4' 6" AT CENTRE

7' 3"

7' 6"

AFTER PEAK

CREW'S ACCOMMODATION

ENGINE ROOM.

BOILER ROOM

ACCOMMODATION

GENERAL STORE

CHAIN LOCKER

FEED WATER TANK

2' 6" RISE OF KEEL.

Superstructure Deck

FIDLEY GRATING

VALVE

HATCH

INNEEL HOUSE

15' 9"

15' 9"

21' 0"

21' 0"

F.P.

F.P.

F.P.

F.P.

Freeboard Deck

STORE HATCH.

CREW'S ENTRANCE

10' 0"

22' 9"

ER ENTRANCE

HATCH

CREW'S W.C.

CREW'S DRESSING PLACE

27' 9"

8' 6"

4' 8"

DRYING ROOM

GALLEY

DECK STORE

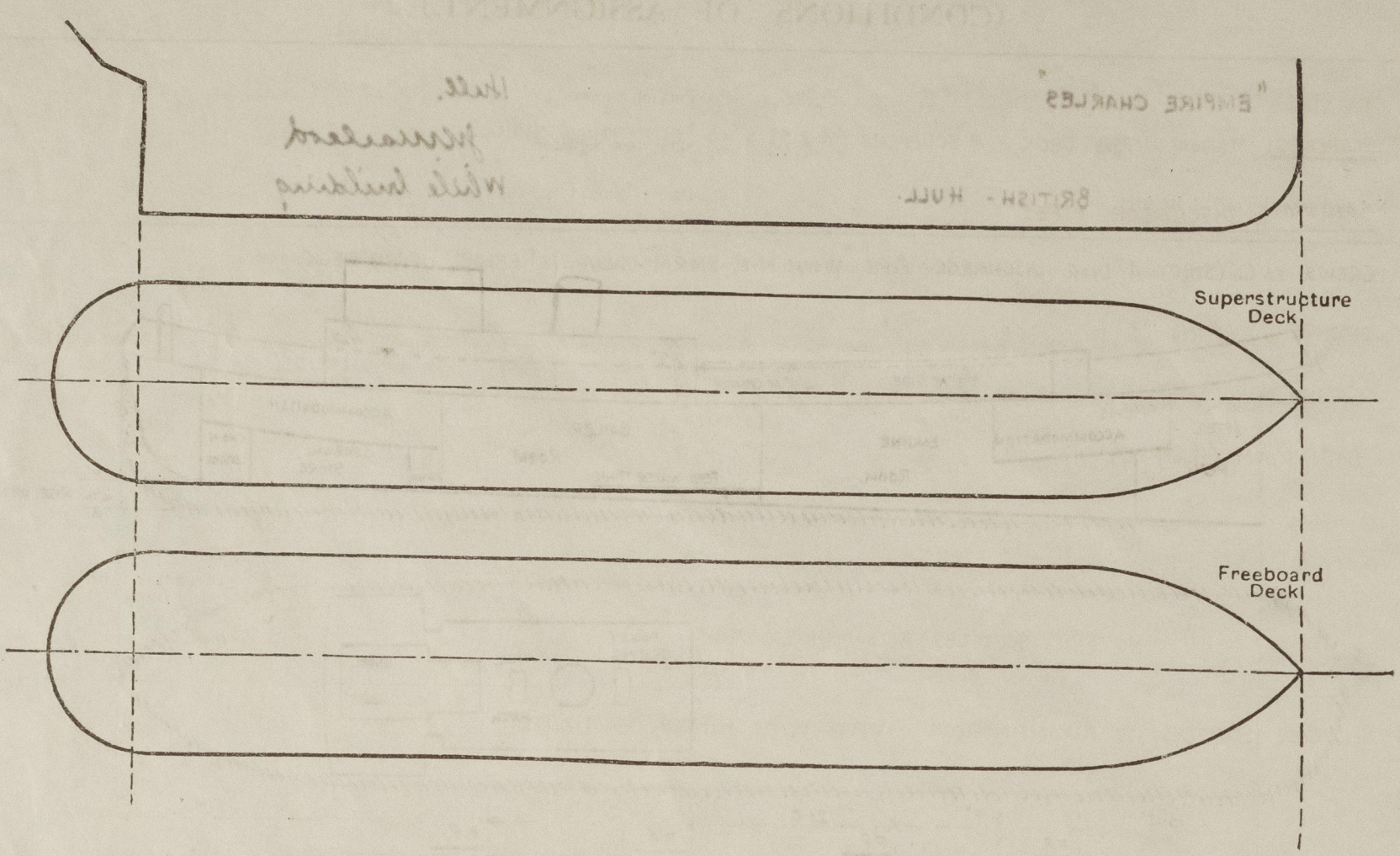
OFFICERS

	Coaming	Plating	Stiffeners	Spacing	End Attachments of Stiffeners	Size of Openings	Height of Sills	Height of Casings
Poop Bulkhead								
Raised Quarter Deck Bulkhead ...								
Bridge, After Bulkhead								
Bridge, Forward Bulkhead								
Forecastle Bulkhead								
Trunk, Aft								
Trunk, Forward								
Exposed Machinery Casings on Free- board or Raised Quarter Decks ...	18" x 31	26	6 x 3 x 375 E in way of main. 3 x 2 1/2 x 28 F	23" to 28"	KNEES AT TOP	6'-11" x 1'-11"	18"	7'-3"
Exposed Machinery Casings on Super- structure Decks	✓							
Machinery Casings within Superstruc- tures not fitted with Class I Closing Appliances	✓							
Deckhouses on Flush Deck Ships ...	18" x 31	26	3 x 2 1/2 x 28 F	28"	KNEES AT TOP	6'-11" x 1'-11"	18"	7'-0"

Poop Bulkhead
Raised Quarter Deck Bulkhead	...
Bridge, After Bulkhead
Bridge, Forward Bulkhead
Forecastle Bulkhead
Exposed Machinery Casings on Free-board or Raised Quarter Deck
Exposed Machinery Casings on Superstructure Decks
Machinery Casings within Superstructures not fitted with Class I Closing Appliances
Deckhouses on Flush Deck Ships	...

PARTICULARS OF PROTECTION TO OPENINGS, ETC.

The following diagrams should be used to indicate the positions of cargo and coaling hatchways, gangway, cargo and coaling ports, ventilators, companionways, etc., which would affect the seaworthiness of the ship :-



Particulars of fiddle, funnel and ventilator coamings, engine room skylight and other openings in machinery casing tops and their means of closing :-
CASING TOP PLATED OVER 26THICK FUNNEL 5'6" DIAR. X 25 THICK. 2 STOKHOLD VENTILATORS 24" DIAR. ✓
ENGINE ROOM SKYLIGHT OF STEEL STRONGLY CONSTRUCTED WITH HINGED STEEL COVERS. ✓
VALVE HATCH 4'3" x 3'0" x 30 THICK FITTED WITH HINGED STEEL COVER & WITH SECURING ARRANGS (EFFICIENT). ✓
FIDDLEY HATCH 4'0" x 1'10" FITTED WITH GRATING & HINGED STEEL COVER 26 THICK - EFFICIENT SECURING ARRANGEMENT. ✓

Particulars of Flush Bunker Scuttles :-
UPPER DECK. 2 SCUTTLES (P. & S) WOOLLON'S TYPE No 2 - 21" DIAR. & FITTED WITH CHAIN ATTACHMENT. ✓

Particulars of Companionways :-
UPPER DECK. CREWS COMPANION OF STEEL WITH DOUBLE STEEL DOORS. 26THICK. SILL (18") *increased to 24" by means of shifting boards* ✓
SPRING LOCK & HANDLE BOTH SIDES. ✓
E.R. ENTRANCE ON STARBOARD SIDE OF E.R. CASING WITH DOUBLE STEEL DOORS 30THICK & SPRING LOCK & HANDLE BOTH SIDES. ✓
SILL 18" & INCREASED TO 24" BY FITTING SHIFTING BOARDS. ✓

Particulars of Ventilators in exposed positions on freeboard and superstructure decks :-
UPPER DECK 1-8" DIAR. COWL VENT. ON TOP OF SKYLIGHT AT FORWARD END OF DECKHOUSE - COAMING 18" x 9/16".
2-5" " G.N. VENTS (PORT) TO CABIN & PANTRY & 1-5" DIAR. G.N. VENT. (STBD) TO CABIN - 20" TO OPENING.
2-8" " COWL VENTS (P. & S) TO ENGINE ROOM - COAMING 36" x 5/16".
1-8" " " (P. & S) TO CREWS QUARTERS AFT. 30 COAMING X 36" HIGH. PROTECTED BY E.R. CASING.

BRIDGE DECK & CASING TOP.
1-6" DIAR. COWL VENT (PORT) TO GALLEY. WOOD PLUGS & CANVAS COVERS SUPPLIED.
1-6" " " (STBD) TO PASSAGE
2-5" " G.N. VENTS (P. & S) TO ACCOMMODATION.
2-3" " " " (") " "

Particulars of Air Pipes in exposed positions on freeboard, raised quarter, or superstructure decks :-
3" DIAR. AIR PIPE TO FORE PEAK TANK - GOOSENECK WELDED TO SAMSON POST. PROTECTED BY BULWARK.
2" " " " GENERAL STORE (PORT) 21" TO OPENING. " " "
2 1/2" " AIR & FILLING PIPE (P. & S) TO FRESH WATER TANK. 21" TO OPENING. " " "
2 1/2" " PIPE TO BOILER FEED TANK (P. & S). 23" TO OPENING " " "
3" " " " TO STORE AFT (PORT) 19" TO OPENING. PROTECTED BY OPENING. WOOD PLUGS & CANVAS COVERS.
3" " " " TO AFTER PEAK TANK. 19" TO OPENING. SUPPLIED.

Particulars of Gangway Cargo and Coaling Ports :-

NONE
YAWHATAH
70T MUST
2 COALING HATCHWAYS
2-8" x 3-0"
2-8" x 3-0"
70T MUST

Particulars of Scuppers and Sanitary Discharge Pipes :-

SCUPPERS:- FROM UPPER DECK - 4 SCUPPERS (P. & S) 5" x 3 CUT THRO' SHELL. ✓

SANITARY DISCHARGE PIPES.

CREWS W.C. (STBD) 4" DIAR. DISCHARGE PIPE WITH N.R. STORM VALVE 12" BELOW UPPER DECK.

OFFICERS W.C. (PORT) 1" " " " " " " 10" " " "

GALLEY SINK (PORT) 1 1/2" " " " " " " 48" " " "

BATH ROOM (PORT) 1 1/2" " " " " " " 15" " " " ✓

Particulars of Side Scuttles :-

No SIDE SCUTTLES BELOW UPPER DECK. ✓

ALL SIDE SCUTTLES TO ACCOMMODATION FITTED WITH HINGED DEADLIGHTS.

Vertical distance of Sill of lowest Side Scuttle above top of keel ✓

Particulars of Guard Rails :-

STEEL BULWARK ALL FORE & AFT.

Particulars of Gangways, Lifelines, etc. :-

NONE.

Particulars of Freeing Arrangements.						
	Length of Bulwark	Height of Bulwark	Size of Freeing Ports	Number each side	Area each side	Rule area each side
After Well	105'0"	3'0" TO 3'6" AT STEM.	5'4" x 1'0"	A	215.7	
Forward Well						
State position of each freeing port ... After Well:- FOR POSITION SEE SKETCH ON PAGE 1. (F. and A. position and height above deck edge) Forward Well:- 7'6" ABOVE DECK.						
State whether the freeing ports are fitted with shutters, bars, or rails, and give particulars of such :- 1-1" DIAR. BAR.						
Additional area where sheer is less than standard.						

PARTICULARS OF PROTECTION TO OPENINGS, ETC.

HATCHWAYS ON FREEBOARD AND SUPERSTRUCTURE DECK									
TRUNK TOP									
Description of Hatchway			2 COALING HATCHWAYS		HATCHWAY TO STORE AFT.				
Dimensions of Hatchway			5'-9" x 5'-6"		2'-6" x 2'-6"				
COAMINGS	{	Height above Deck	6"		18"				
		Thickness	6 x 3 x 405		5 1/16"				
		Sides							
		Ends							
		Stiffeners	✓		✓				
		Brackets, Stays	✓		✓				
HATCH BEAMS	{	Number							
		Spacing							
		Scantling and Sketch							
		Bearing Surface							
FORE AND AFTERS	{	Number							
		Spacing							
		Unsupported Lengths							
		Scantling* and Sketch							
		Bearing Surface							
HATCH COVERS	{	Material	RED WOOD		RED WOOD				
		Thickness	2 1/2"		2 1/2"				
		How fitted	F. & A.		F. & A.				
		Bearing Surface	3" ✓		2 1/2" ✓				
Spacing of Cleats			24"		24"				
Number of Tarpaulins			2		2				
*Are wood fore and afters steel shod at all bearing surfaces? None.									
Are battens and wedges efficient and in good condition? Yes.									
Are tarpaulins in good condition and in accordance with rule requirements? Yes.									
Are lashings provided in accordance with rule requirements? Yes.									

Particulars of any special features :—

Endorsement at first survey and at surveys for renewal of Certificate :—

The fittings and appliances are in accordance with the particulars shown on this form (or as now modified) and are in good condition.

