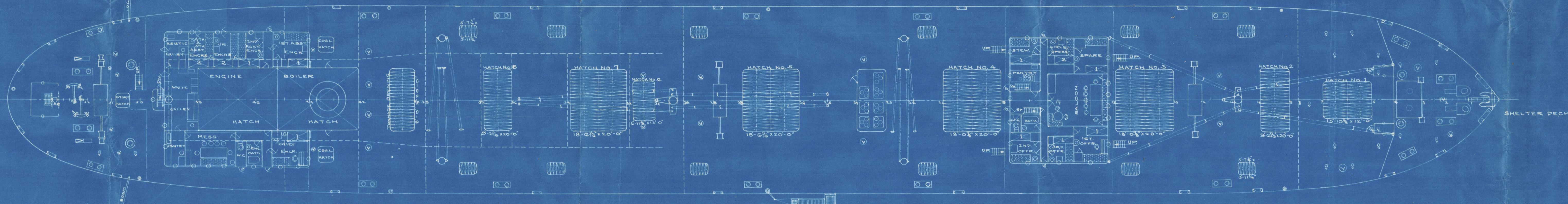
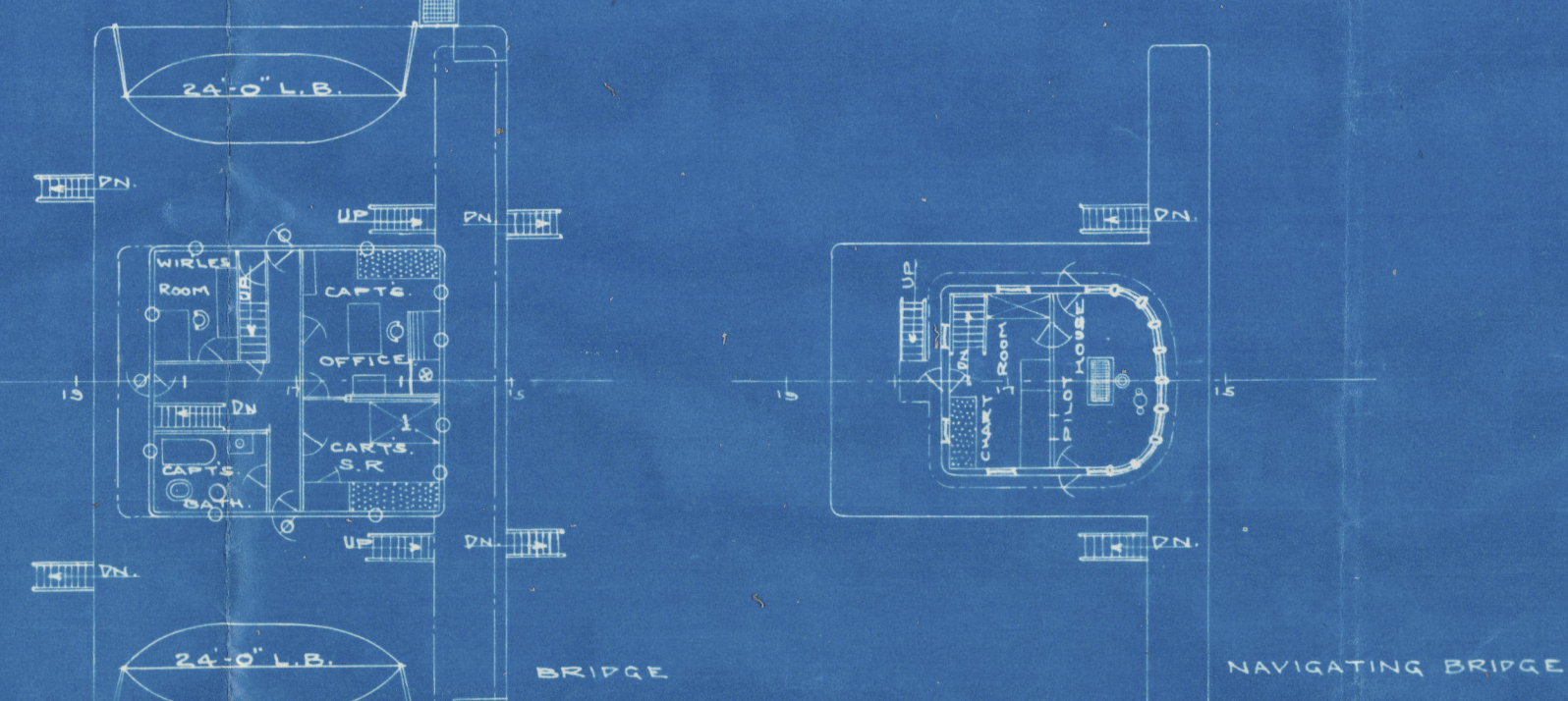
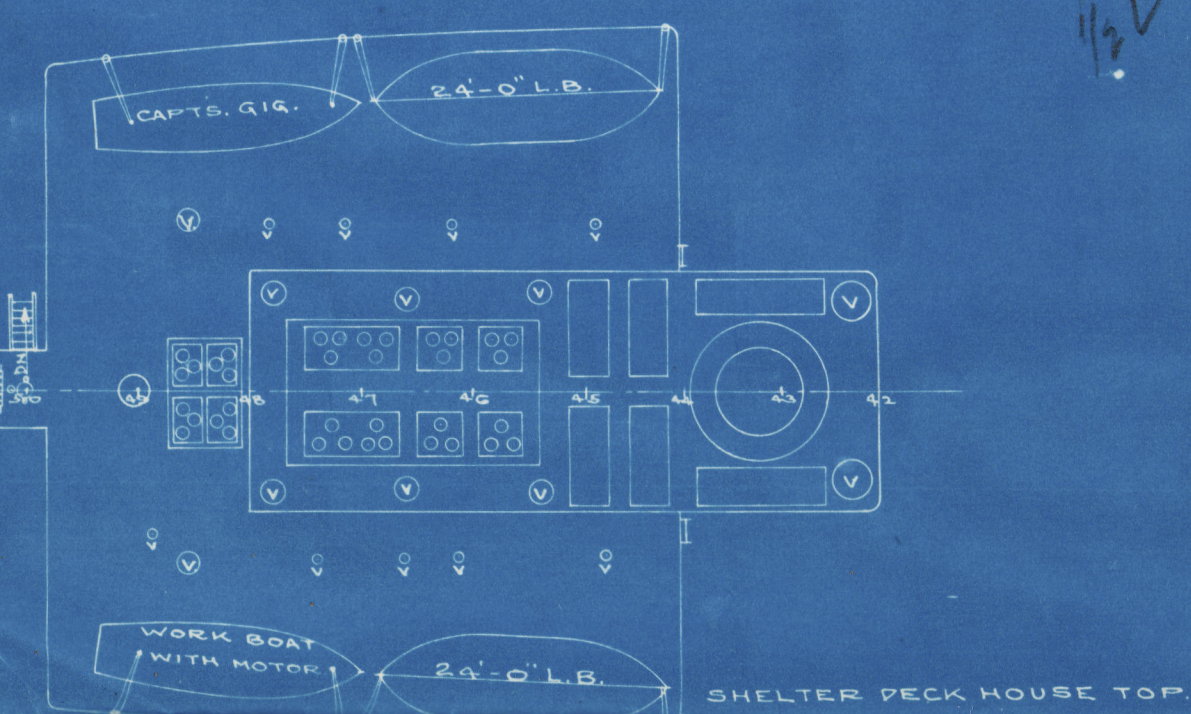
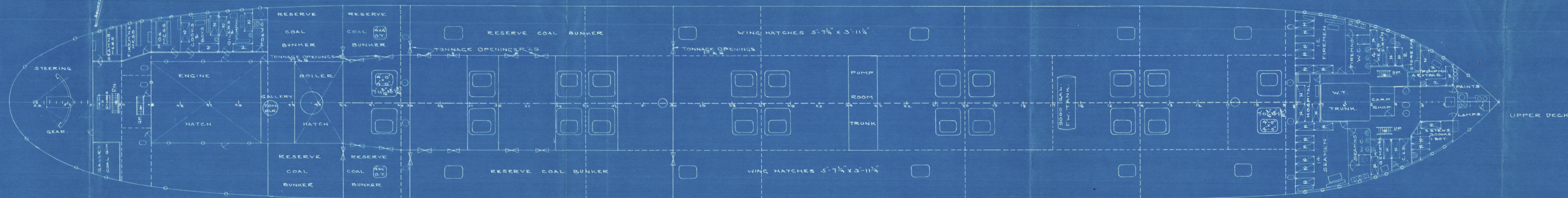


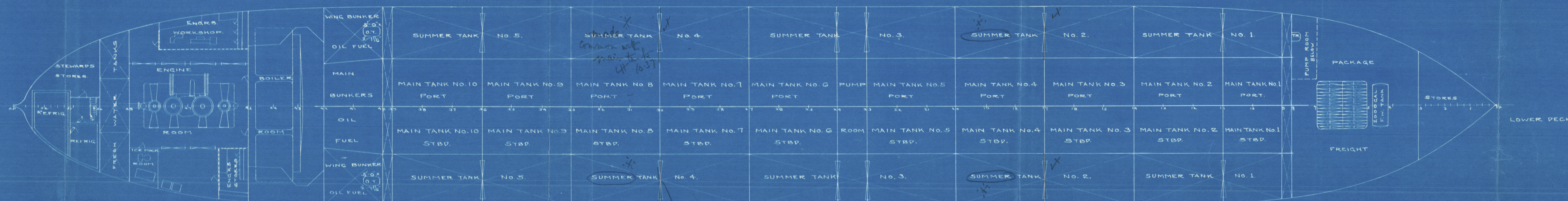
SHELTER DECK.
UPPER DECK.
LOWER DECK.
LWL 21'-1"



SHELTER DECK



UPPER DECK



LOWER DECK

S.S. 'YANKEE ARROW'
S.S. 'EMPIRE ARROW'
S.S. 'LEVANT ARROW'
S.S. 'DIXIE ARROW'

SPACE FOR LIBRARY STAMPS.

1/2 14-10 188
14-10 188
3 51
4 58 LINES
17-0 21-1
5 1
5 2 21
6 2 1/2 1
26-10-21
CONT 221
7 8 L 5 1/2
1 SEP 21
7 1/2
1 SEP 21

468'-0" x 62'-6" x 35'-6" MLD.

FINISHED PLAN
GENERAL ARRANGEMENT

MADE BY T.C. SCALE: 1/8" = 1'-0" DATE: 7-14-21

NEW YORK SHIPBUILDING CORPORATION,
CAMDEN, NEW JERSEY, U.S.A.

DR 1260-202-A

NAVAL ARCHITECT.

007909-007118-0321

General Arrangement Plan

New York S. B. Corp

Hull 261. S.S. "Empire Arrow"

No. 4238

Transferred to

Yankee Arrow

Dis 541

007909-007918-0321



© 2020

Lloyd's Register
Foundation

U.S. SHIPBUILDING CORP.
CAMDEN, N. J. U.S.A.
BLUE PRINT ROOM

9 mail

SEP 7 1937