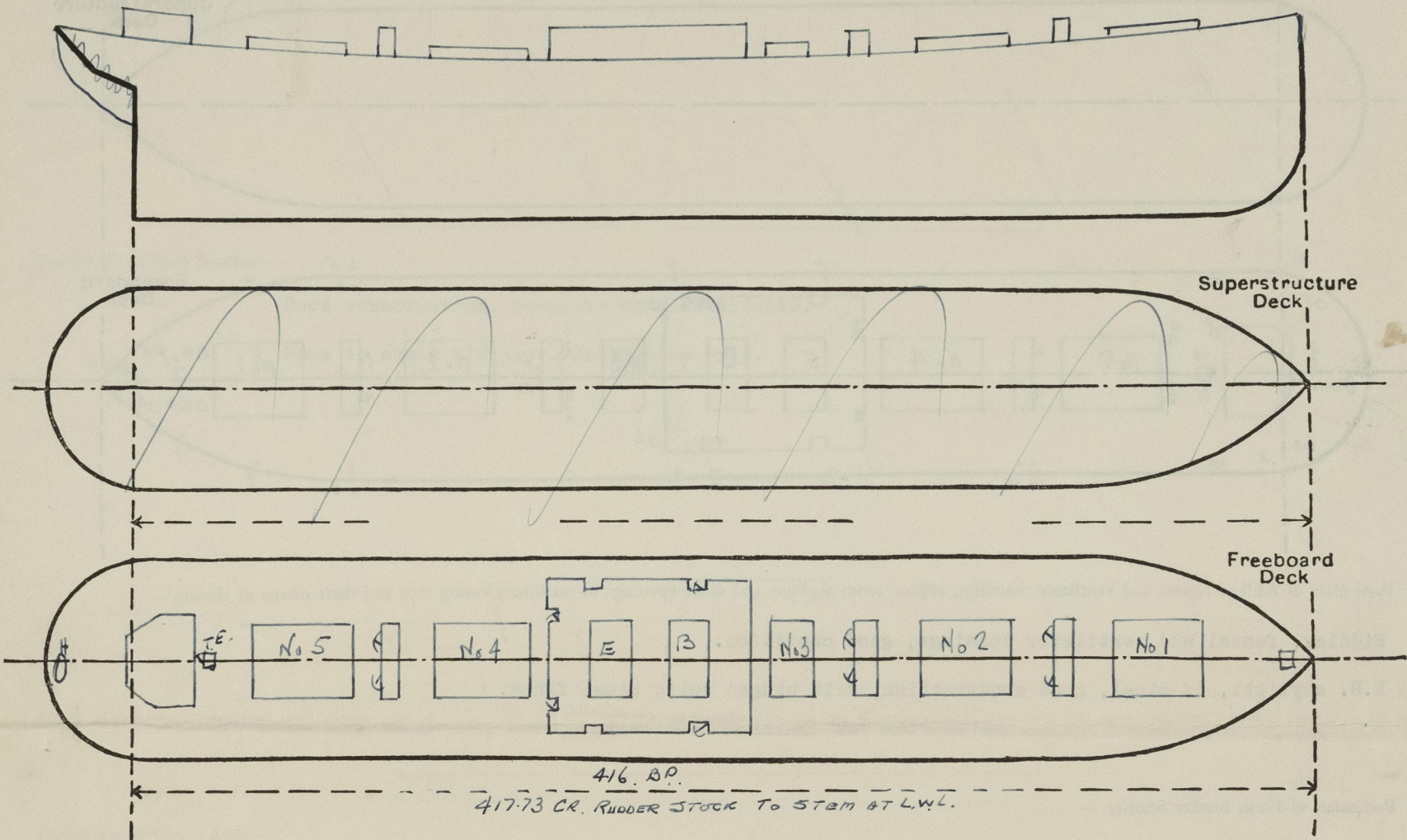


Lloyd's Register of Shipping.  
SURVEYS FOR FREEBOARD.  
(CONDITIONS OF ASSIGNMENT.)

Ship's Name S.S. "CAPTAIN FARMAKIDES" (ex "James M. Goodhue") Port of Survey Baltimore, Maryland  
Official Number - Surveyor's Signature [Signature]  
Nationality and Port of Registry Greek - Syra Date of Survey 13th April, 1947, and subsequent dates

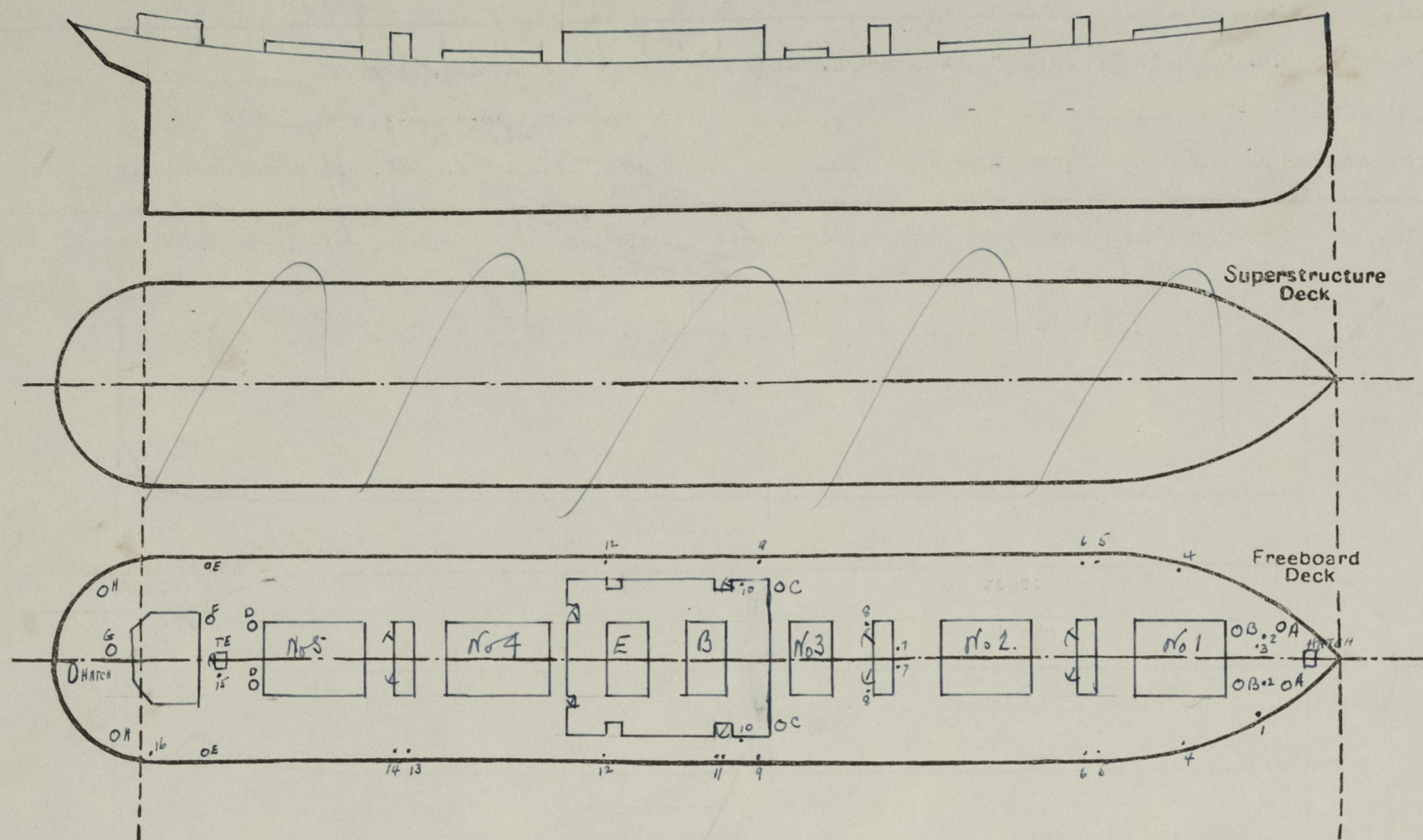
Disposition and dimensions of superstructures, trunks, deckhouses and machinery casings to be inserted in the diagrams and tabular statement:—



Particulars of Superstructures, Trunks, Casings, Deckhouses.								
	Coaming	Plating	Stiffeners	Spacing	End Attachments of Stiffeners	Size of Openings	Height of Sills	Height of Casings
Poop Bulkhead ... ..	-							
Raised Quarter Deck Bulkhead ...	-							
Bridge, After Bulkhead ... ..	-							
Bridge, Forward Bulkhead ... ..	-							
Forecastle Bulkhead ... ..	-							
Trunk, Aft ... ..	-							
Trunk, Forward ... ..	-							
Exposed Machinery Casings on Freeboard or Raised Quarter Decks ...	None exposed.							
Exposed Machinery Casings on Superstructure Decks ... ..	-							
Machinery Casings within Superstructures not fitted with Class I Closing Appliances ... ..	-		Front 6x4x.46 Sides 4x3x.31	30"	Bkts. top E.W. foot	aft 1(p&s) 60 x 26	15	
Deckhouses on Flush Deck Ships ...	-	.25		36"	Bkts. top Nothing foot	sides p&s 60 x 30	15	7' 6"
Particulars of Closing Appliances (state if capable of being manipulated from both sides).								
Poop Bulkhead ... ..	-							
Raised Quarter Deck Bulkhead ...	-							
Bridge, After Bulkhead ... ..	-							
Bridge, Forward Bulkhead ... ..	-							
Forecastle Bulkhead ... ..	-							
Exposed Machinery Casings on Freeboard or Raised Quarter Decks ...	-							
Exposed Machinery Casings on Superstructure Decks ... ..	-							
Machinery Casings within Superstructures not fitted with Class I Closing Appliances ... ..	-							
Deckhouses on Flush Deck Ships ...	Hinged steel W.T. doors at all openings - Capable being manipulated both sides.							

# PARTICULARS OF PROTECTION TO OPENINGS, ETC.

The following diagrams should be used to indicate the positions of cargo and coaling hatchways, gangway, cargo and coaling ports, ventilators, companionways, etc., which would affect the seaworthiness of the ship:—



Particulars of fiddley, funnel and ventilator coamings, engine room skylight and other openings in machinery casing tops and their means of closing:—

Fiddley, funnel and ventilator coamings, good condition.

E.R. skylight, of steel, good construction, with hinged solid steel flaps.

Particulars of Flush Bunker Scuttles:—

None.

Particulars of Companionways:—

Steel houses around masts, good construction, enclosing entrances to holds; openings 48 x 26" - 17" sills; openings closed with hinged steel doors, capable manipulation both sides.

Tunnel escape, of steel, good construction, opening 51" x 18", sill 24"; hinged W.T. door, opening both sides.

Particulars of Ventilators in exposed positions on freeboard ~~and superstructure~~ decks:—

- A - 1 (p & s) - 9" dia. - .36" coaming - 36" high
- B - 1 (p & s) - 24" dia. - .44" coaming - 36" high
- C - 1 (p & s) - 17" dia. - .44" coaming - 10" high, supported to boat deck.
- D - 1 (p & s) - 24" dia. - .44" coaming - 36" high
- E - 1 (p & s) - 6" dia. - .36" coaming - 36" high
- F - 1 (p & s) - 6" dia. - .36" coaming - 36" high
- G - 1 cr. 12" dia. - .36" coaming - 36" high
- H - 1 (p & s) - 9" dia. - .36" coaming - 36" high

wood plugs and canvas covers for all ventilator coamings.

Particulars of Air Pipes in exposed positions on freeboard, ~~and superstructure~~ decks:—

- 1 - 1 (s) - 3 1/2" dia.
- 2 - 1 (p&s) - 3 1/2" dia.
- 3 - 1 (p) - 2 1/2" dia.
- 4 - 1 (p&s) - 4" dia.
- 5 - 1 (p&s) - 2 1/2" dia.
- 6 - 1 (p&s) - 3" dia.
- 7 - 2 cr. - 3 1/2" dia.
- 8 - 1 (p&s) - 3 1/2" dia.
- 9 - 1 (p&s) - 3 1/2" dia.

- 10 - 1 (p&s) - 2 1/2" dia.
- 11 - 2 (s) - 4" dia.
- 12 - 1 (p&s) - 2" dia.
- 13 - 1 (p&s) - 3" dia.
- 14 - 1 (p&s) - 2 1/2" dia.
- 15 - 1 (s) - 2 1/2" dia.
- 16 - 1 (s) - 3 1/2" dia.

All pipes 36" high - wire gauze at mouths - closed with hinged metal flaps or ball float valves.

39153.

Particulars of Gangway Cargo and Coaling Ports:—

None.

Particulars of Scuppers and Sanitary Discharge Pipes:—

Scuppers and sanitary discharges are all from spaces above freeboard deck, and openings on ship's sides have storm valves of good construction.

Particulars of Side Scuttles:—

Good construction, complete with deadlights.

None in shell plating - deckhouses only.

Vertical distance of Sill of lowest Side Scuttle above top of keel None fitted below freeboard deck.

Particulars of Guard Rails:—

At after end only for 18 feet (p & s) around stern, 3 tiers rails 42" high, stanchions 5' apart.

Particulars of Gangways, Lifelines, etc:—

Provision for fitting lifelines.

Particulars of Freeing Arrangements.						
	Length of Bulwark	Height of Bulwark	Size of Freeing Ports	Number each side	Area each side	Rule area each side
After Well ... ..	All fore and aft except	43"	57" x 9"	21	74.86 square ft.	58.5 sq ft. for 74.
Forward Well ... ..	for 18 feet at stern					
State position of each freeing port ... .. { After Well:— (F. and A. position and height above deck edge) { Forward Well:—About every 15 feet - 6"						
State whether the freeing ports are fitted with shutters, bars, or rails, and give particulars of such:—						
Additional area where sheer is less than standard. -						

PARTICULARS OF PROTECTION TO OPENINGS, ETC.

HATCHWAYS ON FREEBOARD AND SUPERSTRUCTURE DECKS.										
Description of Hatchway	No. 1	No. 2	No. 3	No. 4	No. 5	To fore Peak	To St. Gear oval			
Dimensions of Hatchway	33-9x20	35x20	20 x 20	35 x 20	35 x 20	3' x 3'	24 x 16			
COAMINGS	Height above Deck	36 ✓				18 ✓	15 ✓			
	Thickness { Sides	.63				.36	.36			
	{ Ends	.63				.36	.36			
	Stiffeners	12x3 1/2 B.A.								
Brackets, Stays	stays about every 7 feet									
HATCH BEAMS	Number	6	6	3	6	6				
	Spacing	4' 10"	5' 0"	5' 0"	5' 0"	5' 0"				
	Scantling and Sketch	8 x .56								
		21 x .40								
FORE AND AFTERS	Bearing Surface	8 x .56								
		3								
	Number									
	Spacing									
Unsupported Lengths										
Scantling and Sketch										
HATCH COVERS	Material	wood ✓					steel ✓			
	Thickness	2 1/2 ✓					.34 ✓			
	How fitted	f & a ✓					Hinged			
	Bearing Surface	3 ✓					W.T.			
Spacing of Cleats	24 ✓						cover ✓			
Number of Tarpaulins	3 ✓						6 toggles			
*Are wood fore and afters steel shod at all bearing surfaces? -										
Are battens and wedges efficient and in good condition? Yes ✓										
Are tarpaulins in good condition and in accordance with rule requirements? Yes ✓										
Are lashings provided in accordance with rule requirements? Yes ✓										
Locking bars fitted on all cargo hatchways. ✓										
All wood covers have steel bands at ends. ✓										

Particulars of any special features:—

Endorsement at first survey and at surveys for renewal of Certificate:—

The fittings and appliances are in accordance with the particulars shown on this form (or as now modified) and are in good condition.



© 2021

Lloyd's Register  
Foundation