

CLASS 100A1

TRANSVERSE NUMBER B+D = 52+30 = 82
 LONGITUDINAL (B+D) L = 82.370 = 30340
 EQUIPMENT 31572

EQUIPMENT.

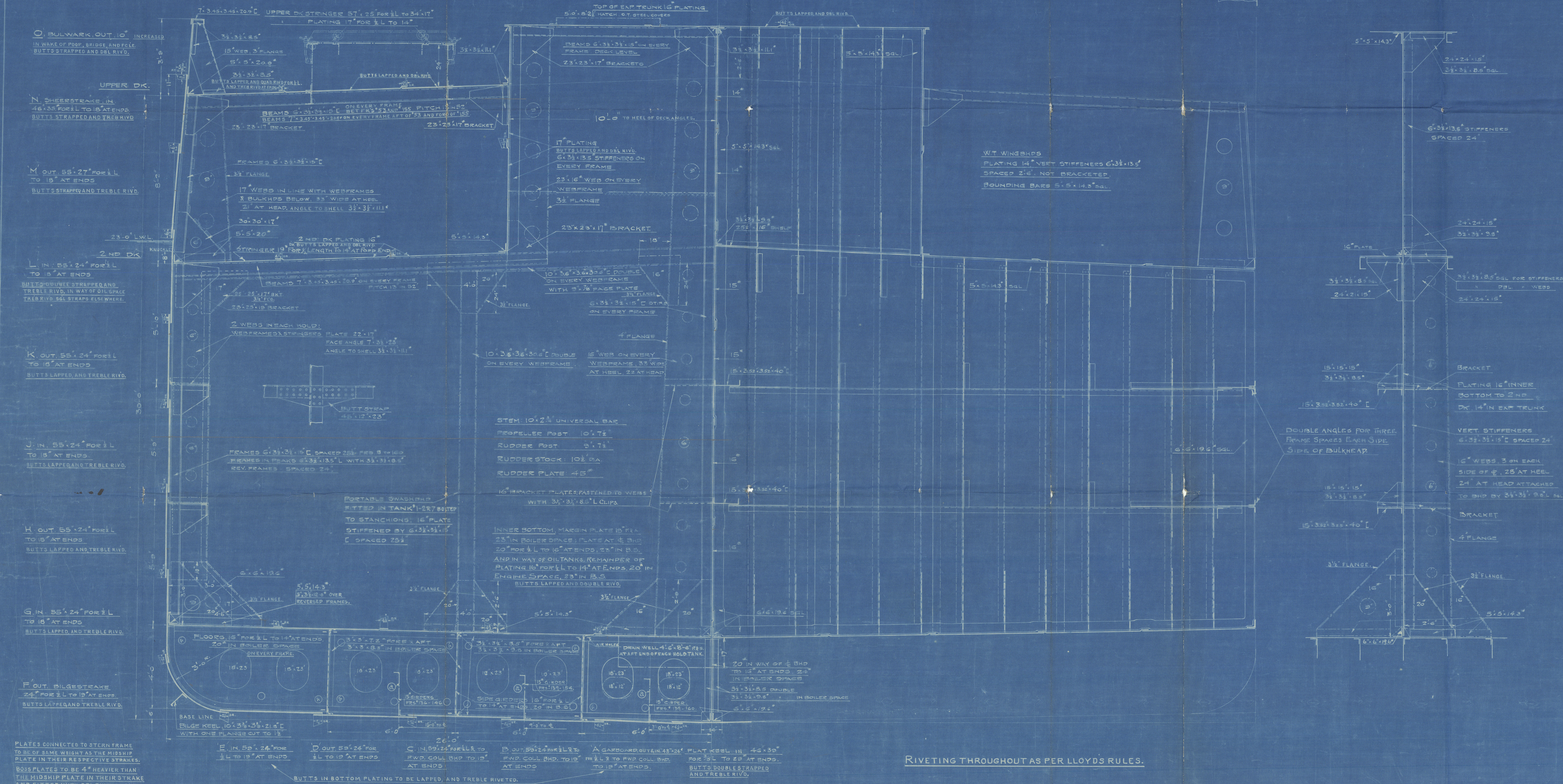
2 BOWERS STOCKLESS EACH 6300"
 1 STREAM ANCHOR 2100"
 1 KEDGE 910"
 270 FATHOMS 2 1/2" STUD CHAIN CABLE
 90 4 1/2" CIRC. STREAM WIRE
 120 4 1/2" STEEL WIRE TOWLINE
 HAWSERS AND WARPS AS PER RULE.

RIVETING.

THE FOLLOWING PARTS OF STRUCTURE BETW. FRS 55-108
 SHALL HAVE RIVET HOLES SPACED FOR OIL TIGHT WORK
 AS SPECIFIED BY LLOYD'S RULES.
 A. INNER BOTTOM PLATING AND BULKHEAD THEREIN.
 B. SHELL BETWEEN INNER BOTTOM AND 2ND DECK.
 C. 2ND DECK.
 D. EXPANSION TRUNK SIDES (NOT TOP).
 E. CENTRE LINE BULKHEAD.
 F. TRANSV. BULKHEADS 55, 69, 82, 95, 108, 114, 127, 140 & 153.

PRINCIPAL DIMENSIONS

LENGTH S.F. 370'-0"
 BEAM MLD. 52'-0"
 DEPTH MLD. 30'-0"



RIVETING THROUGHOUT AS PER LLOYD'S RULES.

LOC.	ALTERATION.	DATE.	BY.
23	INNER BOTTOM BULKHEADS 1/2" x 1/2" x 2" ADDED	FEB. 8-10	73.

Handwritten signature
 2191 23 30
Handwritten signature

TANK STEAMER

HULL 207

FR 612 2	DATE 10/10/12	BY 101	CHK 101

MIDSECTION

SCALE 1/2" = 1 FT

FORE RIVER SHIPBUILDING CO.
 QUINCY, MASS.

HULL NO. 207. DATE 2. JAN. 12.

DRAWN BY 21. CHECKED BY W.A.W. ENGINEERMAN.

APPROVED BY 21.

Job No. 101

PRINTS

ONE SET

101

101

101

101

101

101

101

101

101

101

101

101

Mr. S.
"American Fisher"

Midsection



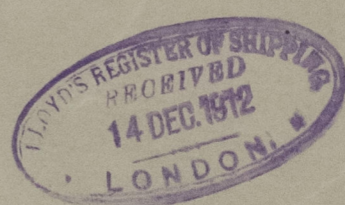
© 2021

Lloyd's Register
Foundation

007881-007887-0250

H

OFFICE
NO.
75.



007881-007887-0250



Lloyd's Register
Foundation

H. SOL

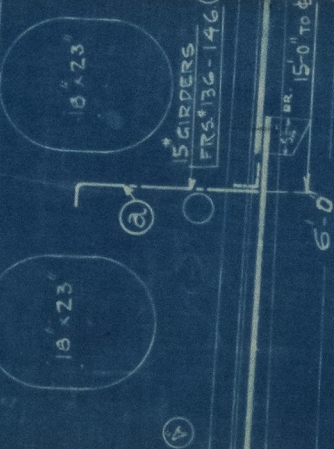
23

FITTED IN TANK 1-2R780
TO STANCHIONS, 16" PLAT
STIFFENED BY 6" 3 1/2" x 3 1/2"
C SPACED 25 1/2"

OVER
RAMES.

3 1/2" FLANGE

3' x 5' x 7.2" FOR X AFT
3' x 3' x 8.3" IN BOILER SPACE



15" GIRDS
FRS 136-146

6'-0" 15'-0" TO 6'

26
T. 59" x 24" FOR
2 19" AT ENDS
C. IN. 59" x 24"
FWD. COLL
AT ENDS

BOTTOM PLATING TO BE LAPPED,

FOR LLOYD'S RULES.

16.1.44



© 2021
Lloyd's Register
Foundation