

Hand-drawn technical drawing of a mechanical part, likely a bracket or support. The drawing includes the following dimensions and labels:

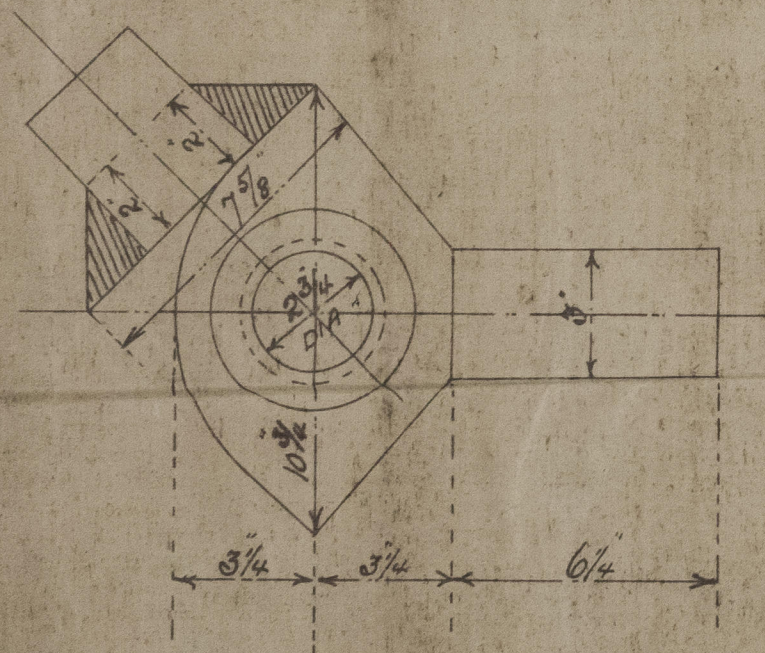
- Top Right Corner:** A fillet with a radius of $R\frac{3}{8}$.
- Right Side:** A vertical dimension of $5\frac{1}{2}$ (with a checkmark) and a horizontal dimension of $1\frac{1}{2}$ (with a checkmark).
- Bottom Right Corner:** A fillet with a radius of $R\frac{1}{4}$ (with a checkmark).
- Bottom Edge:** A horizontal dimension of $6\frac{1}{2}$ and a vertical dimension of $2\frac{3}{4}$ (with a checkmark).
- Left Side:** A vertical dimension of $4\frac{1}{2}$ and a horizontal dimension of $2\frac{1}{2}$.
- Internal Features:** A central circular hole with a diameter of $\phi 1$ and a rectangular slot with a width of $2\frac{1}{8}$ and a depth of $1\frac{1}{2}$. The slot is labeled "PIN.".
- Other Labels:** "STANDARD" is written vertically on the left side, and "PIN." is written near the central hole.

✓ HOLES FOR 1/4" RIVETS DRILLED
✓ 5 DIA. APART
SCALE 1" = ONE FOOT

ENLARGED VIEW OF PINTLES
NOTE:- THESE PINTLES ARE LOOSE. THE CENTRES
ARE TO BE KEPT IN LINE WITH CENTRES OF
HOLES IN STERN POST.

Area 40 $\frac{1}{2}$
Centre 1.93 ft

Numeral - 77.2



ENLARGED VIEW OF STOPPERS
 RUDDER TO HEEL OVER TO AN ANGLE OF 45° EXACTLY

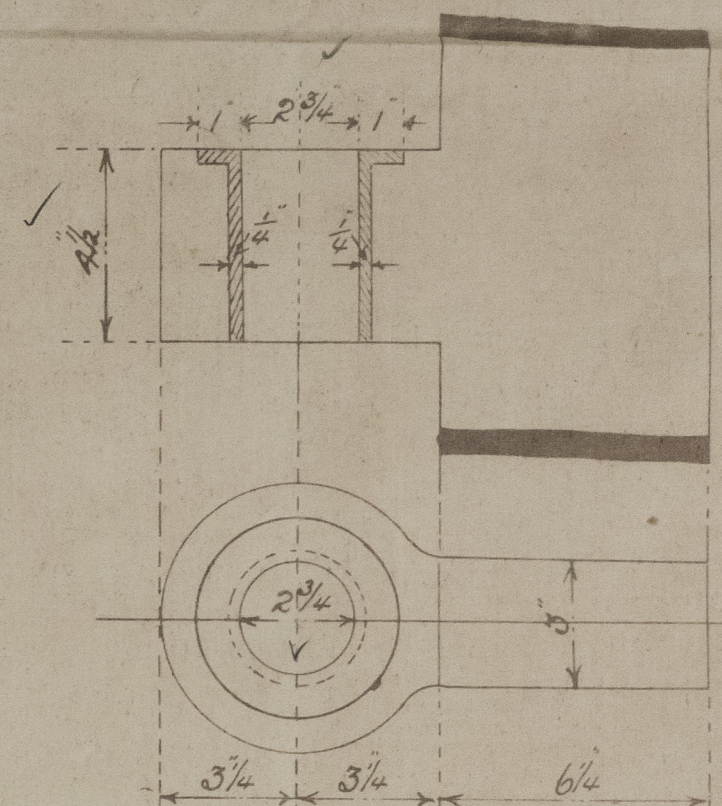
LLOYD'S REGISTER
OF SHIPPING.
5 - JAN. 1912
HULL

N^{OS} 244-5 & 8

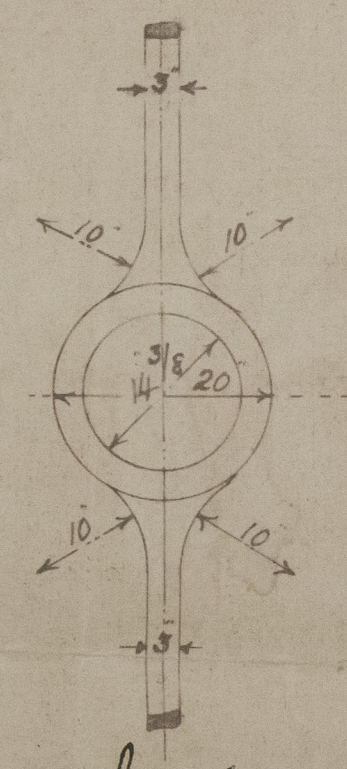
COOK WELTON & GEMMELL LTD
SHIPBUILDERS
BEVERLEY

HOLES PITCHED $1\frac{3}{4}$ " AND 2" FROM INNER EDGE OF POST
HOLES DRILLED FOR 1" RIVETS 6 DIA^φ APART

SCALE $\frac{3}{4}$ " = ONE FOOT.



ENLARGED VIEW OF STEEL BUSHES



C. B.
6.1.12

© 2020

007865-007873-071

Pavlova, Rayon d'Or & Monimia

COOK WELTON & GEMMELL

N^o 244- 5- 8- ~~7~~

RUDDER & STERN-FRAME



$\frac{4}{6}$ Pavlova Hull Rpt No: 25285.



© 2020

Lloyd's Register
Foundation

007865-007873-0215