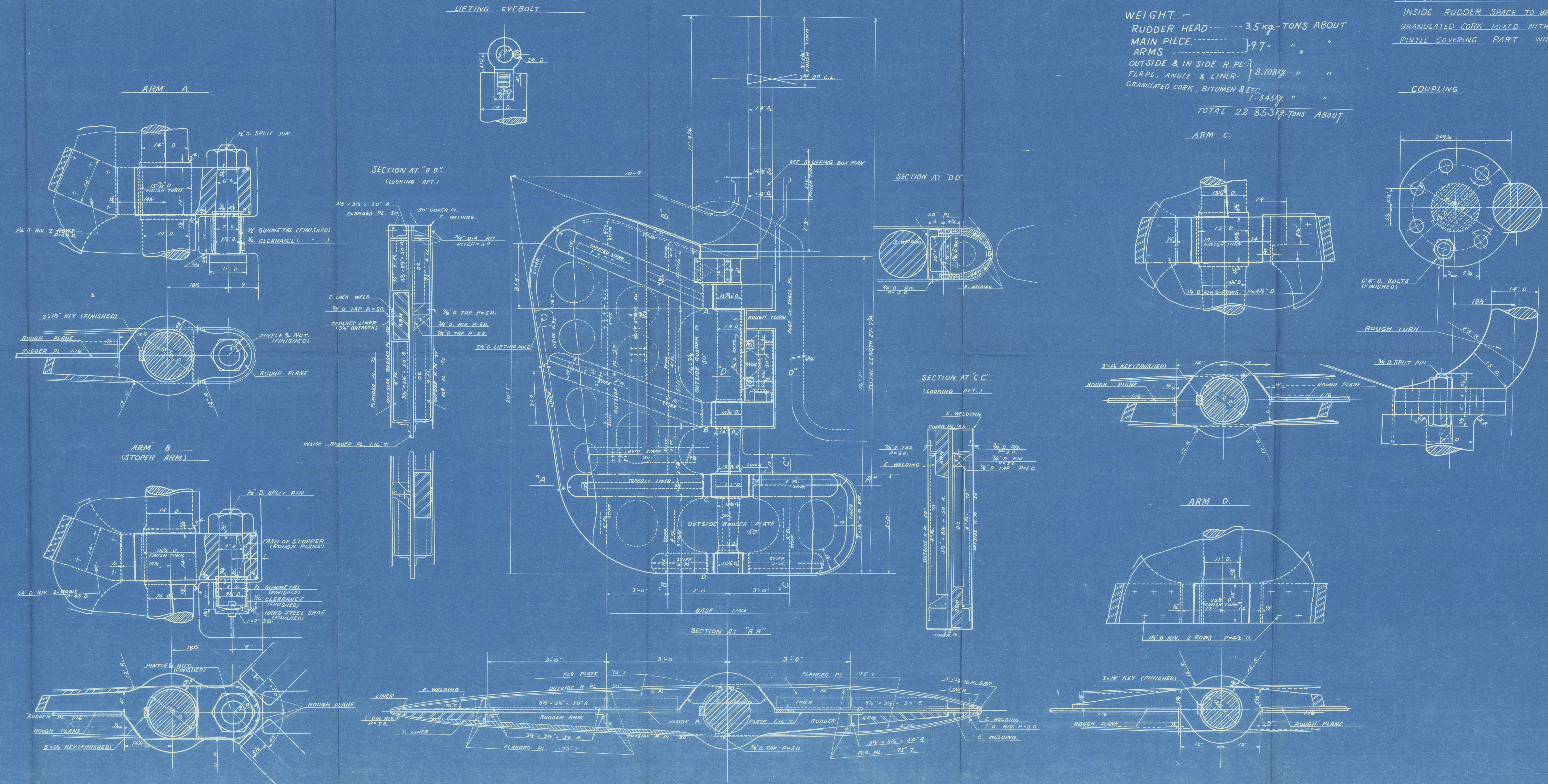


MATERIAL:-  
 RUDDER HEAD } FORGED STEEL.  
 MAIN PIECE }  
 ARMS } CAST STEEL.  
 PINTLES, BOLTS, NUTS, KEYS,  
 & EYEBOLT----- FORGED STEEL.

WEIGHT:-  
 RUDDER HEAD-----3.5 kg.-TONS ABOUT.  
 MAIN PIECE-----9.7" " "  
 ARMS-----" " "  
 OUTSIDE & IN SIDE R.PL.-} 8.108kg " "  
 FL&PL, ANGLE & LINER---} 1.545kg " "  
 GRANULATED CORK, BITUMEN & ETC.  
 TOTAL 22.853kg-TONS ABOUT.

N. B.:-  
 INSIDE RUDDER SPACE TO BE PACKED WITH  
 GRANULATED CORK MIXED WITH BITUMEN EXCEPT  
 PINTLE COVERING PART WHERE NO PACKING.



M.V. "Rio de Janeiro Maru".  
 Nagasaki Report No.1726.

M. S. RIO DE JANEIRO MARU.  
 RUDDER  
 SCALE 1/2" TO 1 FT.  
 DETAILS 1" = 1 FT.  
 (FINISHED PLAN)



M.V. "Rio de Janeiro Maru".

Nagasaki Report No.1726.

M. S. RIO DE JANEIRO MARU.

RUDDER

SCALE  $\frac{1}{2}$ " TO 1 FT.  
DETAILS 1" " 1 FT.

( FINISHED PLAN )

*H. Sakakibara*  
May 24th 1930.

007846-007856-0131



© 2020

Lloyd's Register  
Foundation

007846-007856-0131