

LLOYD'S CLASS 100 A. 1. "WITH FREEBOARD."

N.B. ALL SECTIONS USED THROUGHOUT THE SHIP ARE
REVISED BRITISH STANDARD SECTIONS.

PRINCIPAL DIMENSIONS		
LENGTH	(L)	445'0"
BREADTH MOULDED	(B)	60'6"
DEPTH	TO UPPER DECK	40'9"
LOADED DRAUGHT (FROM TOP OF KEEL)		28'03"
DEPTH "D" FOR SCANTLING NUMERALS	(D)	40'75"

SCANTLING NUMERALS		
1 ST LONGITUDINAL NUMERAL (L/D)		$445/40.75 = 18.134$
2 ND L/D		$445/40.75 = 18.134$
PROPORTION TO UPPER DECK		$445/40.75 = 10.92$

EQUIPMENTS & EQUIPMENT NUMBER		
EQUIPMENT NUMBER		46196
LETTER		dt

EQUIPMENTS		
3-BOWER ANCHORS STOCKLESS, COLLECTIVE		232
STREAM ANCHOR ORDINARY EX-STOCK		232
STUD CHAIN CABLE	300 FMS	2 1/2" DIA.
STEEL WIRE FOR STREAM ANCHOR	120	4 1/2" CIR. (24 WIRES)
TOW LINE STEEL WIRE	130	5 1/2" CIR. (DE.)
HAWSER MANILA	2-100 FMS	8 CIR.
WAPPS	2-100 FMS	8 CIR.

FORGING & CASTING		
STEM (ROLLED MILD STEEL)		10 1/2" x 2 1/2"
STERN FRAME AS PER PLAN		

KEEL & SHELL PLATING		
KEEL PLATE		55 x 85 ~ 75
BOTTOM		.67 ~ .52
SIDE		.65 ~ .49
BOSS		.75
FILE SIDE PLATE		.44
SHEER STRAKE	65 x 75 (RULE SIZE 52 x 74) ~ 49	
BELOW SHEER STRAKE	.65 (RULE SIZE 52 x 70) ~ 49	

ENGINE CASING		
COAMING PLATE		.30, .34 WHERE EXPOSED
CASING		.26, .30
COAMING ANGLE		3 x 3 x 30A 3 x 3 x 34A
STIFFENERS		3 x 3 x 30A 3 x 3 x 34A SPACED APART

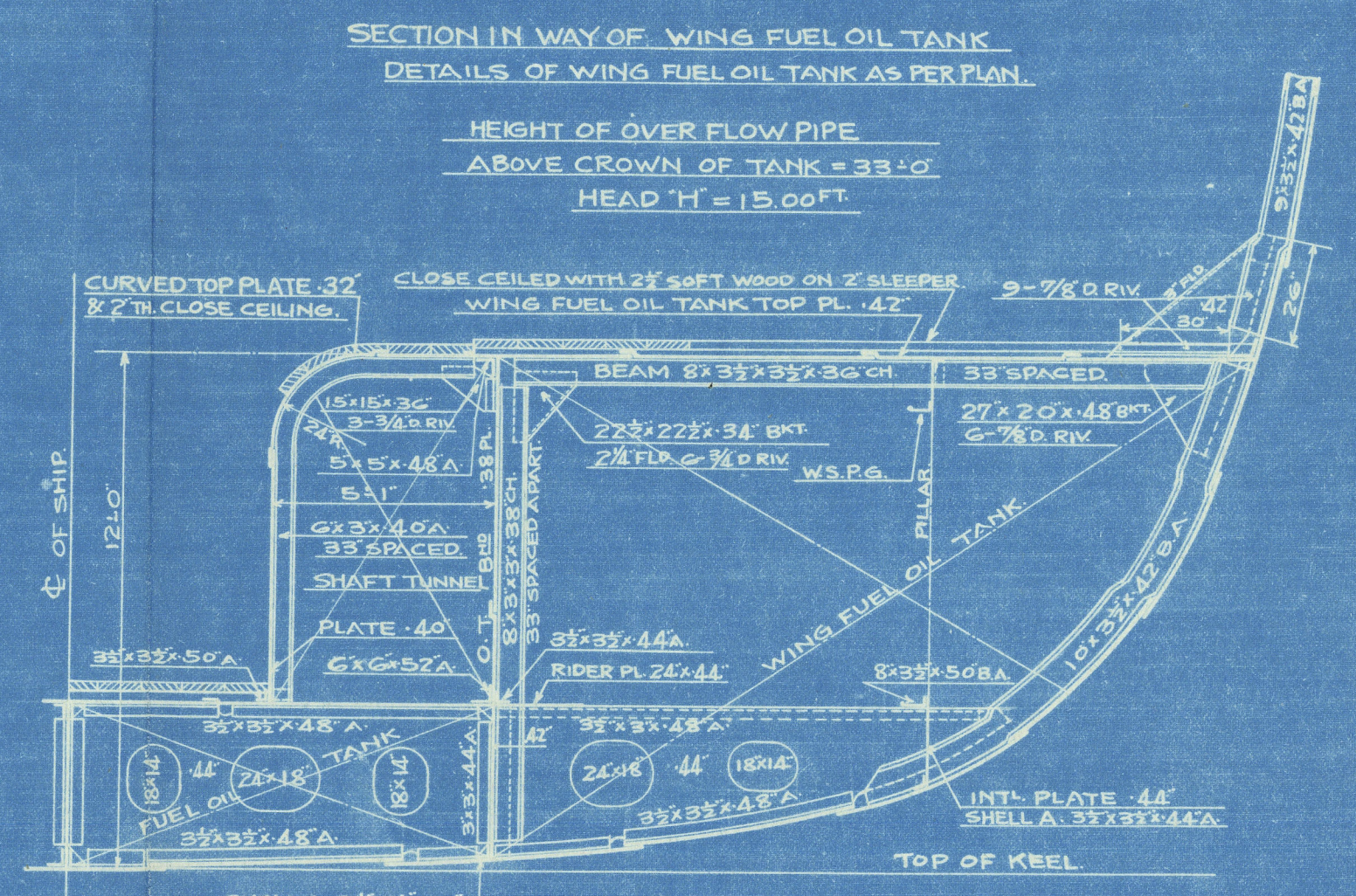
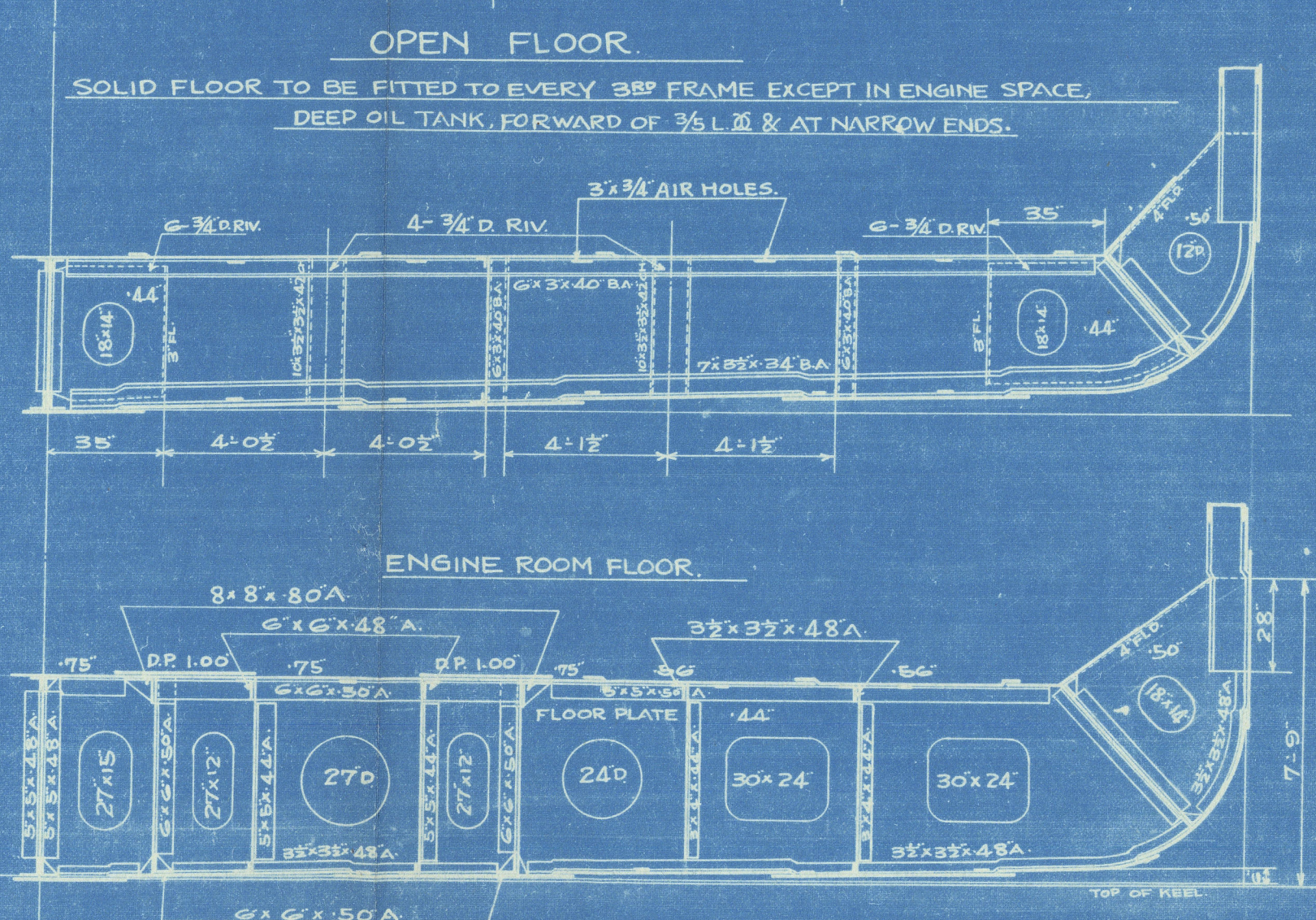
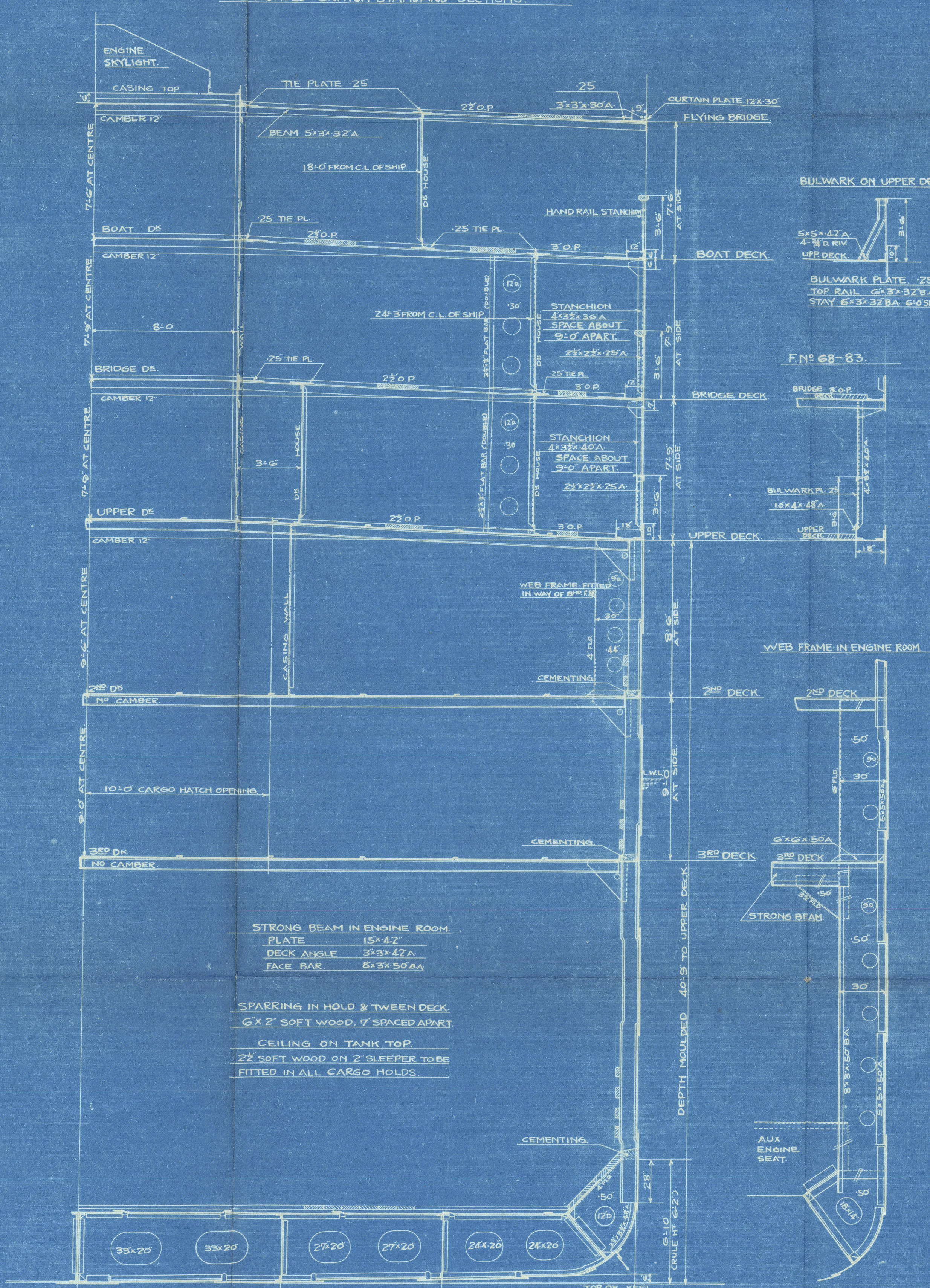
DECK HOUSES			
	UPPER DECK	BRIDGE DECK	BOAT DECK
COAMING PLATE	.30	.28	.25
HOUSE PLATE	.25	.25	.25
COAMING ANGLE	6 x 3 x 37A	6 x 3 x 32A	6 x 3 x 32A
TOP	3 x 3 x 36A	3 x 3 x 28A	2 1/2 x 2 1/2 x 25A
STIFFENERS	3 1/2 x 2 1/2 x 32A	3 x 2 1/2 x 30A	3 x 2 1/2 x 25A
" SPACING	SPACED ABOUT 33" APART		

BILGE KEEL (115' G' AMIDSHIPS)		
BULB PLATE		10 x 50
CONNECTING BAR		5 x 3 x 50A
DEPTH OF GIRDER		13

DOUBLE BOTTOM			
	1/2 L. 0' - ENDS	ENGINE SPACE	REMARKS
CENTRE	PLATE 45 x 62 ~ 48	60 x 62	
GIRDER	KEEL ANGLE 5 1/2 x 6 1/2 ~ 60DA	5 1/2 x 6 1/2 DA	
	TOP 3 1/2 x 5 1/2 ~ 55DA	3 1/2 x 5 1/2 DA	
	VERT. 2 1/2 x 4 1/2 ~ 48A	2 1/2 x 4 1/2 A	UNDER 5 1/2 x 4 1/2 THURST SEATING
SIDE	PLATE .44	.44	
GIRDER	TOP ANGLE 3 1/2 x 4 1/2 ~ 48A	3 1/2 x 4 1/2 A	UNDER 5 1/2 x 4 1/2 THURST SEATING
	BOTTOM " 3 1/2 x 4 1/2 ~ 48A	3 1/2 x 4 1/2 A	
	VERT. " 3 1/2 x 4 1/2 ~ 48A	3 1/2 x 4 1/2 A	
SOLID FLOOR	PLATE .44	.44	
	FRAME 3 1/2 x 3 1/2 ~ 48A	3 1/2 x 3 1/2 A	5 1/2 x 4 1/2 FORD OF 3/4 L. 0' UNDER 5 1/2 x 4 1/2 THURST SEATING
W.T. FLOOR	BOUNDARY A 3 1/2 x 3 1/2 ~ 52A	3 1/2 x 3 1/2 A	
	STIFFENER 3 1/2 x 4 1/2 ~ 48A	3 1/2 x 4 1/2 A	SPACED 30" APART
INNER BOTTOM	M.L. STRAKE 56 x 56 ~ 46	.75	
	OTHER .48 ~ 42	.56	
	MARGIN PL. 40 x 56	.56	
	TOP SHELL 5 1/2 x 56A	5 1/2 x 56A	

STRENGTHENING OF BOTTOM FORWARD
FROM FORWARD OF 3/4 L. 0' TO COLLISION BULKHEAD.
PITCH OF RIVET IN FRAME TO BE 5/8" (TWO COMPLETE ROW ON BOTH FLANGES). FRAME ANGLE 5 1/2 x 4 1/2 FROM MARGIN PLATE TO MARGIN PLATE.
INT'L ADDITIONAL SIDE GIRDER TO BE FITTED AT 4' 0" APART & 2" HT. GIRDER EXTENDING AS FAR FORWARD AS PRACTICABLE.
FLOOR PLATE OR INT'L SIDE GIRDERS ARE NOT TO BE FLANGED SHELL PLATING, THREE STRAKES NEXT THE KEEL TO HAVE MIDSHIP THICKNESS .67" MAINTAINED (FORWARD TO COLLISION BULKHEAD).

RIVETING NOTE (EDGE CONNECTION)		
KEEL PLATE	2R	2R
BOTTOM PLATE	2R	2R
SIDE PLATE	2R	2R
SHEER STRAKE	2R	2R
BELOW STRAKE	2R	2R
FILE SIDE PL.	2R	2R
M.L. STRAKE	2R	2R
OTHER	2R	2R
MARGIN PLATE	2R	2R
UPPER STRINGER PL.	1R	1R
" PLATE	1R	1R
ALL OTHER DS PL.	1R	1R
	1/2 L. 0' AT ENDS	



DECKS			
	BOAT DECK	BRIDGE DECK	FILE DECK
STRINGER PLATE	2 1/2 x 30	3 x 32	3 1/2 x 34A
SHELL ANGLE	3 x 3 x 30A	3 x 3 x 32A	3 1/2 x 34A
G.WATERWAY ANGLE	FLAT BAR .46 WELDED		
DECK PLATE	.25 TIE PLATE	.25 TIE PLATE	.36
CURTAIN PLATE	12 x 30	BULKWARK PL. .25	
WOOD PLANK	5 1/2 x 30 WHERE EXPOSED	5 1/2 x 30 WHERE EXPOSED	5 1/2 x 34A (IN WAY OF DEEP TANK)

TANK SIDE BRACKETS			
	NEAR 1/2 L. 0' HOLDS	ENGINE ROOM	15' L. FROM STEM
PLATE	.50	.50	.50
GUSSET PLATE	CONTINUOUS	CONTINUOUS	CONTINUOUS
TO FRAME	15 1/2" D. RIV.	22 1/2" D. RIV.	15 1/2" D. RIV.
TO GUSSET	8 1/2" D. RIV.	8 1/2" D. RIV.	7 1/2" D. RIV.
TO MARGIN PLATE	15 1/2" D. RIV.	22 1/2" D. RIV.	15 1/2" D. RIV.
VANGLE ON MARGIN PL.	5 x 5 x 48A	5 x 5 x 48 DA	5 x 5 x 48 A
" ON FLOOR PL.	5 x 5 x 48A	5 x 5 x 48 DA	5 x 5 x 48 A
GUSSET PLATE	.50	.48	.48
NO. OF RIV. IN WAY TO FRAME	22 1/2" D. RIV.	22 1/2" D. RIV.	22 1/2" D. RIV.
NO. OF RIV. IN WAY TO TOP	20 1/2" D. RIV.	20 1/2" D. RIV.	20 1/2" D. RIV.

FRAMINGS		
FRAME SPACE		
BOTH PEAKS		24
FORWARD OF 3/4 L. 0'		27
ELSE WHERE		33

FRAMING DEPTH (d)		
	ACTUAL (d)	CORRECTED (d)
IN WAY OF ENGINE ROOM	18.2	18.02
" HOLD	19.5	19.1
" WING F.O. TANK	8.2	19.4
" DEEP FRAME SYSTEM	23.0	23.0

RIVETING NOTE (END CONNECTION)		
	1/2 L. 0'	AT ENDS
KEEL PLATE	LAPPED & 4R	LAPPED & 3R
BOTTOM	4R	3R
SIDE	3R	3R
SHEER STRAKE	4R	3R
BELOW	4R	3R
FILE SIDE PLATE	4R	1R
INNER BOTTOM :-		
M.L. STRAKE	LAPPED & 3R	LAPPED & 2R
OTHER	4R & BELOW 2R	2R
MARGIN PLATE	3R	3R
CENTRE GIRDER	4R	3R
UPPER DE STRINGER PL.	4R	3R
" PLATE	4R & UP 3R	1R
2 ND DE STRINGER PL.	3R	2R
" PLATE	2R	1R
3 RD DE STRINGER PL.	1R	1R
" PLATE	1R	1R
FILE DE STRINGER PL.	1R	1R
" PLATE	1R	1R
BRIDGE DE STRINGER PL.	LAPPED & 1R	
" PLATE	1R	
BOAT DE STRINGER PL.	1R	
" PLATE	1R	

M.V. "SANYO MARU".
Negeseki Report No.1750.

MIDSHIP SECTION.
SCALE 1/4 INCH TO 1 FOOT.
(44.5' x 60' 6" x 40' 9")
(FINISHED PLAN)

