

NOTE:-

ALL RUDDER GUDGEONS MACHINED TOP & BOTTOM  
 17.2.14 ALL STERNFRAME GUDGEONS MACHINED ON TOP SIDE.

# RUDDER & STERNFRAME NOS 168. 9. & 170

TO LLOYD'S REQUIREMENTS TEST & INSPECTION

A.M.D. = 49.9 NOT EXCEEDING 73

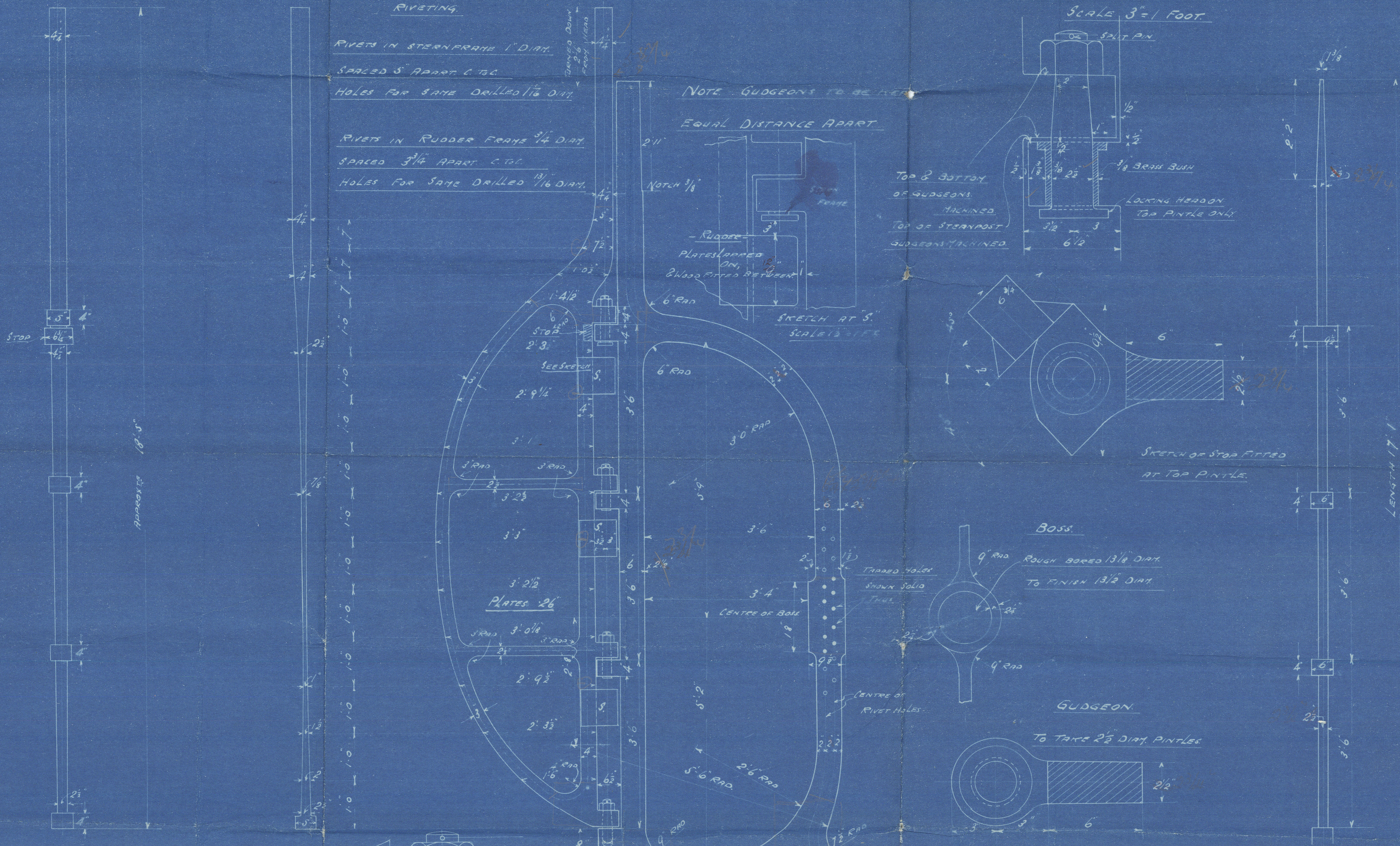
speed not exceeding 18 knots  
 speed not to exceed 10 knots

SCALE 3/4" = 1 FOOT.

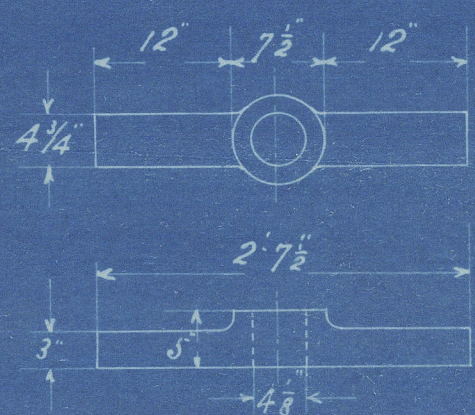
DETAIL SKETCH OF PINTLES

SHOWING BRASS BUSH &c.

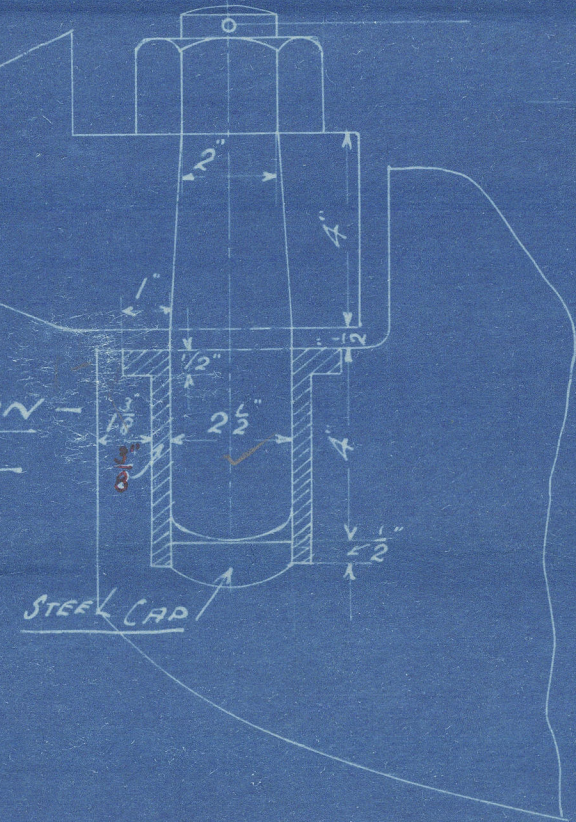
SCALE 3" = 1 FOOT.



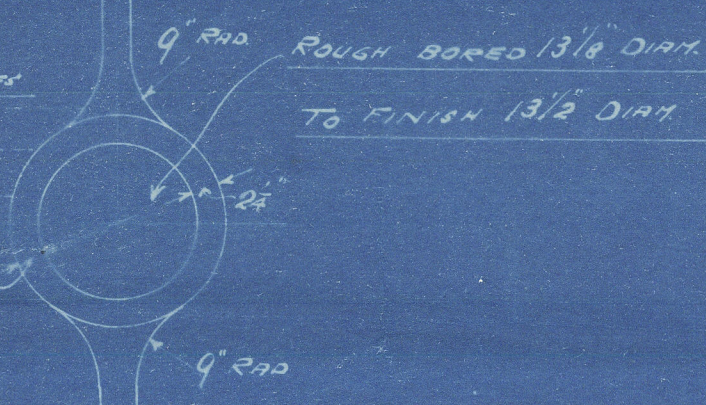
SKETCH OF YOKE.



- BOTTOM GUDGEON -  
 - SCALE 3\"/>

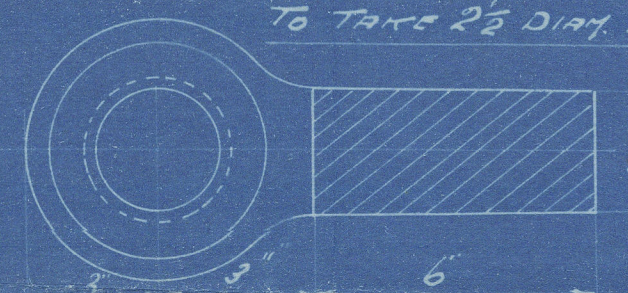


BOSS.



GUDGEON

TO TAKE 2 1/2\"/>



GOOLE SHIPBUILDING & REPAIRING CO. LTD.  
 VICTORIA SHIPYARD,  
 GOOLE.

Drawing No. 260

Made by [signature] Checked by [signature]

Date 12/2/14




Lloyd's Register  
 Foundation

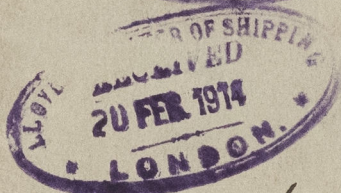


Garle S. B. Rlos'

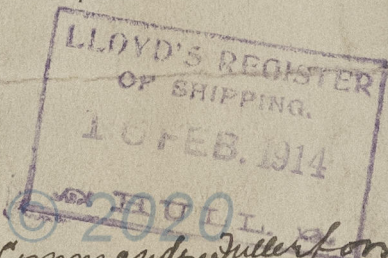
No 168-169-170

Allen Hunt & Rudder

*Ephratah*  
s/s Commander   
Holbrook



s/s Commander Horton  
Hull Rpt No. 28358



s/s Commander Fuller

Hull Rpt No. 28433

Lloyd's Register  
Foundation