

29 FEB 1944

Index No. 37518
(For London Office only).

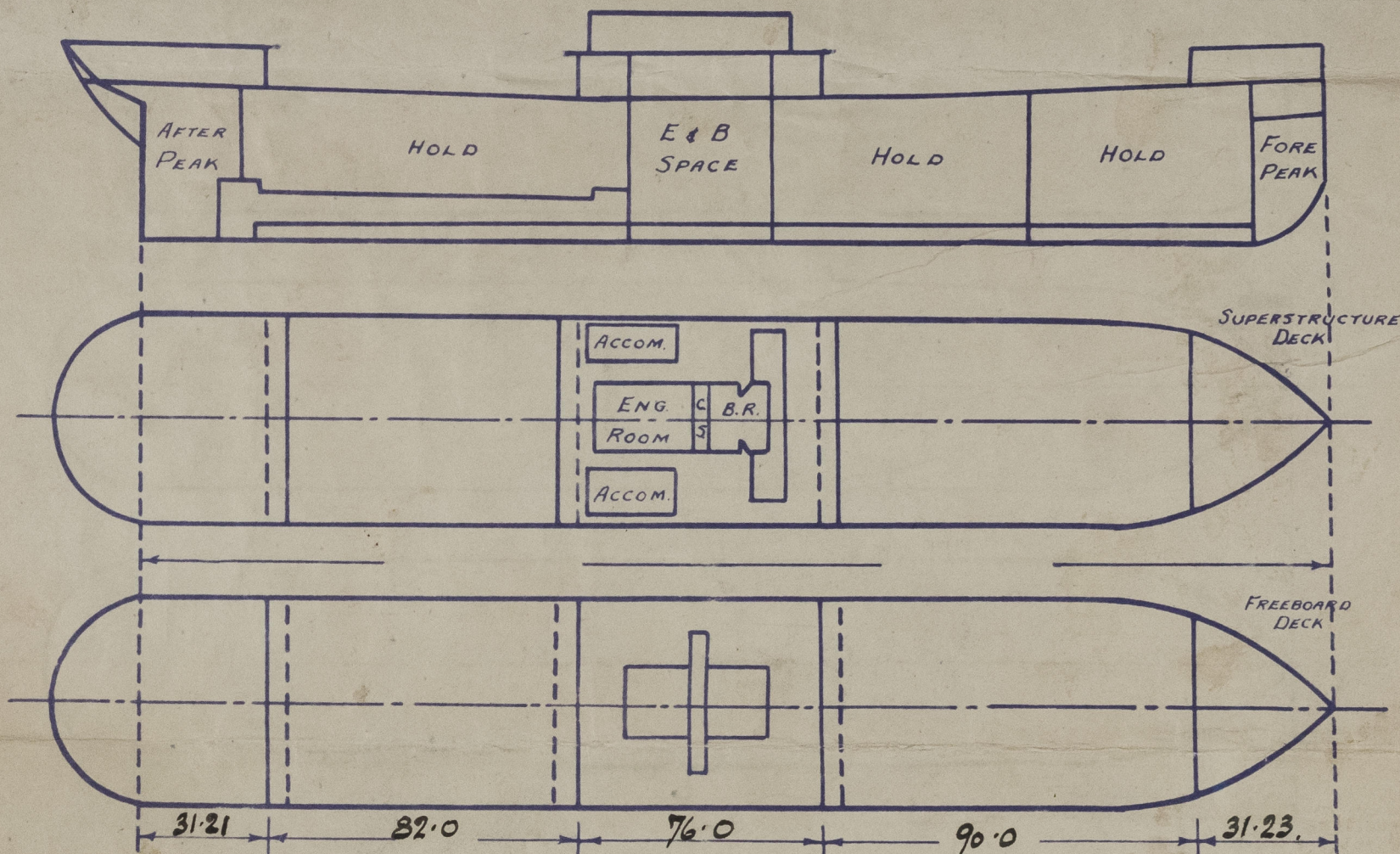
Lloyd's Register of Shipping.

SURVEYS FOR FREEBOARD.

(CONDITIONS OF ASSIGNMENT.)

Ship's Name "MANITOU PARK" Port of Survey PICTOU, Nova Scotia, Canada.
 Official Number 174811 Surveyor's Signature *Geo. H. Nain*
 Nationality and Port of Registry CANADIAN, MONTREAL Date of Survey During Construction.

Disposition and dimensions of superstructures, trunks, deckhouses and machinery casings to be inserted in the diagrams and tabular statement: -



Particulars of Superstructures, Trunks, Casings, Deckhouses.

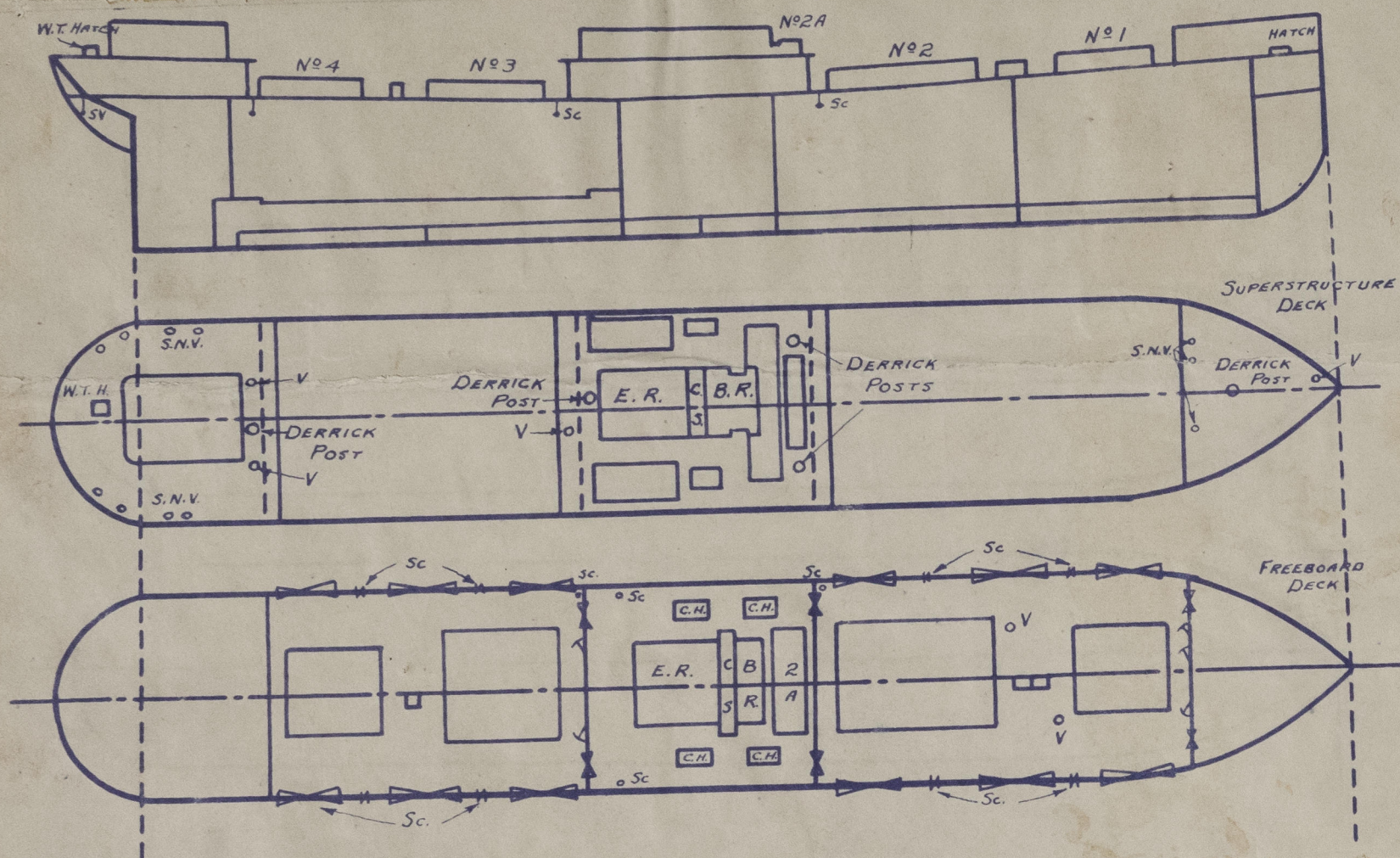
	Coaming	Plating	Stiffeners	Spacing	End Attachments of Stiffeners	Size of Openings	Height of Sills	Height of Casings
Poop Bulkhead	--	.33	5 x 3 x 3/8 O.A.	Not exceed- ing 30"	Lugs Top Bottom	None	--	7' 6"
Raised Quarter Deck Bulkhead ...	--	--	--	--	--	--	--	--
Bridge, After Bulkhead	--	.24-.30"	4x2 1/2 x 5/16 O.A. & Div.	Average 2' 4"	(Ends of stiff- takes rivet (in boundary angle.	5'0"x2'6" 4'1"x3'1"	18"	9' 0"
Bridge, Forward Bulkhead	--	.39	8x3 1/2 x .35 B.A.	do	Lugs top & bottom	4'0"x2'6" 2'10"	18"	9' 0"
Forecastle Bulkhead	--	.27	4'x3x5/16 O.A. & div. bnds.	2'3" to 3'6"	Ends of stiff- rivet in boun- dary angle.	5'1"x3'1" 4'0"x2'0"	18"	7' 0"
Trunk, Aft								
Trunk, Forward								
Exposed Machinery Casings on Free- board or Raised Quarter Decks ...		----	None	----				
Exposed Machinery Casings on Super- structure Decks	18"x.34"	.30	3 x 2 1/2 x 5/16 O.A.	2' 0"	Bkt. at top Two rivets through Dk. Beams	5'0"x 2'0"	18	7' 4"
Machinery Casings within Superstruc- tures not fitted with Class I Closing Appliances	18"x.30	.25	- do -	- do -		- do -	- do -	9' 0"
Deckhouses on Flush Deck Ships ...								

Particulars of Closing Appliances (state if capable of being manipulated from both sides).

Poop Bulkhead	No openings. ✓
Raised Quarter Deck Bulkhead ...	✓
Bridge, After Bulkhead	Portable steel plates with hook bolts and hinged steel doors, manipulated from both sides. ✓
Bridge, Forward Bulkhead	Hinged steel W.T. doors manipulated from both sides. ✓
Forecastle Bulkhead	Portable steel plates with hook bolts and hinged steel doors, manipulated from both sides. ✓
Exposed Machinery Casings on Free- board or Raised Quarter Decks ...	None ✓
Exposed Machinery Casings on Super- structure Decks	Hinged steel doors, manipulated from both sides. ✓
Machinery Casings within Superstruc- tures not fitted with Class I Closing Appliances	Hinged steel doors, manipulated from both sides. ✓
Deckhouses on Flush Deck Ships ...	✓

PARTICULARS OF PROTECTION TO OPENINGS, ETC.

The following diagrams should be used to indicate the positions of cargo and coaling hatchways, gangway, cargo and coaling ports, ventilators, companionways, etc., which would affect the seaworthiness of the ship:-



Particulars of fiddle, funnel and ventilator coamings, engine room skylight and other openings in machinery casing tops and their means of closing:-

Fiddle, Funnel and Ventilator Coamings efficiently constructed.
Engine Room Skylight constructed of steel with hinged steel covers operated from inside of casing.
Fiddle openings closed by hinged steel covers.

Particulars of Flush Bunker Scuttles:- None

Particulars of Companionways:-

Entrance to crews quarters on poop deck - openings in deckhouse port and stbd.
Steel doors, 5' 0" x 1' 11", sill 18 1/2" above deck. Door manipulated from both sides.

Particulars of Ventilators in exposed positions on freeboard and superstructure decks:-

Upper Deck - 4 @ 15" dia. Coam. 36" x .36" to Holds
1 @ 15" " " 11' 6" x .36" to holds stayed to Bridge End.
Poop Deck - 1 @ 15" dia. Coam. 30" x .36" to Holds
2 @ 8" x 4" S.N.V. 30" to Opening in Crew's Accommodation.
Bridge Deck - 3 Derrick Posts with M.V. on top.
3 @ 12" dia. Coam. 30" x .34" - To tunnel and Bridge Space
2 @ 6" " " 30" x .29" - To air space on No. 2 Hold After End.
F'scle Deck - 1 Derrick Post with M.V. on top - To hold.
1 @ 6" dia. Coam. 36" x .29" - to F.P. Stores.
3 @ 8" x 4" S.N.V. 36" to Opening - To F'scle.
(Closing appliances for Coamings - wood plugs and canvas covers)

Particulars of Air Pipes in exposed positions on freeboard, raised quarter and superstructure decks:-

Upper Deck - 1 P & S - 3-1/2" dia. - 36" above deck to D.B.Tank.
1 P & S - 2-1/2" " - 36" " " D.B.Tank.
F'scle Deck - 1 @ 3-1/2" " - 24" " " Forepeak
1 @ 4" " - 18" " " D.B.Tank.
Bridge Dk. - 1 P & S - 3" " - 18" " " Dry Tank
2 P & S - 2-1/2" " - 18" " " E.R.Tank
1 P & S - 3-1/2" " - 18" " " D.B.Tank.
Poop Deck - 1 @ 4" " - 18" " " After Peak
1 @ 3" " - 18" " " Rudder Trunk

(Closing appliances for Air Pipes - wood plugs secured by chains to pipes.)

Particulars of Gangway Cargo and Coaling Ports:-

None.

Particulars of Scuppers and Sanitary Discharge Pipes:-

4 - Scuppers on exposed part of freeboard deck out through gunwale angle, port & stbd.
3 - 3" dia. Pipe Scuppers fitted on Freeboard Deck at Bridge & Poop Ends, led through ships side below Freeboard Deck P & S.
1 - 2" " " " " " from Refrig. Room led through ships side with Storm Valve (SS).
1 - 2" " " " " " from Magazine in Poop led through ship side with Storm Valve P & S.
2 - 3 1/2" " Scuppers fitted on Freeboard Deck in Bridge Space, led to Bilges with cock and weighted handle, P & S.
All sanitary discharge pipes fitted with storm valves, above Freeboard Deck, Port & Stbd.

Particulars of Side Scuttles:-

Poop Space: 12" dia. side scuttles fitted with hinged deadlights efficiently constructed.

Vertical distance of Sill of lowest Side Scuttle above top of keel. All side scuttles fitted above Freeboard Deck.

Particulars of Guard Rails:-

Poop Deck: 2 rows of rails, stanchions 3' 0" high, spaced about 4' 6" apart.
Bridge Deck: 3 " " " 3' 9" " " 4' 9" "
F'scle Deck: 2 " " " 3' 0" " " 4' 9" "

Particulars of Gangways, Lifelines, etc.:-

Fittings provided at ends of poop, bridge and forecastle decks and lifelines rigged.

Particulars of Freeing Arrangements.

	Length of Bulwark	Height of Bulwark	Size of Freeing Ports	Number each side	Area each side	Rule area each side
After Well ...	82' 0"	5' 0"	1 @ 12' 0" x 8-1/2" 1 @ 13' 10" x 8-1/2" 1 @ 11' 9" x 8-1/2"	3	26.68 sq ft	16.4 sq ft
Forward Well ...	90' 0"	5' 0"	1 @ 11' 7" x 8-1/2" 1 @ 11' 9" x 8-1/2" 1 @ 11' 10" x 8-1/2"	3	25.00 sq ft	18.0 sq ft
<p>State position of each freeing port ... (After Well: Poop Front 4' 1" 16' 0" 16' 0" } HEIGHT ABOVE DECK 7 1/8" (F. and A. position and height above deck edge) Forward Well: Bridge Front 10' 0" 18' 2" 18' 2" }</p> <p>State whether the freeing ports are fitted with shutters, bars, or rails, and give particulars of such:- NONE</p> <p>Additional area where sheer is less than standard.</p>						

PARTICULARS OF PROTECTION TO OPENINGS, ETC.

HATCHWAYS ON FREEBOARD AND SUPERSTRUCTURE DECKS.											
FREEBOARD DECK											
Description of Hatchway	No. 1 & 4	No. 2 & 3	No. 2A	Access to Holds	Inside F'scle	Inside Bridge	No. 2A Br. Dk.	Goaling Hatchway	Hatchway on Poop	Hatchway on Casing	
Dimensions of Hatchway	32'0"x22'0"	34'0"x24'0"	8'0"x24'0"	2'6"x2'6"	4'0"x3'0"	6'0"x3'0"	5'10"x16'0"	3'0"x12'0"	3'0"x3'0"	6'0"x12'6"	
COAMINGS	Height above Deck ... 31-1/2	31-1/2	9"x3 1/2"	31"	9"x3 1/2"	9"x3 1/2"	31"	31"	18"	8x3 1/2"	
	Thickness50	.50	.44 BA	.44	.44 BA	.44 BA	.44	.44	.38	.34 BA	
	Stiffeners ... 9x3 1/2"x4	5x3 1/2"x4					7x3x.38	3x3x.38			
	Brackets, Stays ... 2" dia. 3	2" dia. 3					on For End	Vertical			
HATCH BEAMS	Number ... 5	6	1								
	Spacing ... 5' 4"	4' 10 1/4"	4' 0"								
	Scantling and Sketch Pl. 20"x.35	1.20"x.38	Pl. 1.17	None	None	None	None	None	None	None	
	Bearing Surface ... 4 Angles (5" x 3 1/2" x 4-3/8)	4 Angles	4 Angles								
FORE AND AFTERS	Number ...										
	Spacing ...										
	Unsupported Lengths ...										
	Scantling* and Sketch ...										
	Bearing Surface ...			NONE							
HATCH COVERS	Material ... SPRUCE	SPRUCE	SPRUCE	SPRUCE	SPRUCE	SPRUCE	SPRUCE	SPRUCE	Hinged steel	SPRUCE	
	Thickness ... 2-1/2	2-1/2	2-1/2	2-1/2	2-1/2	2-1/2	2-1/2	2-1/2	2-1/2	2-1/2	
	How fitted ... F & A	F & A	F & A	P & S	P & S	P & S	F & A	F & A	W.T. covering & fastening.	F & A	
	Bearing Surface ... 5"x4"	5" x 4"	5" x 3"	2-1/2	2-1/2	2-1/2	2-1/2	2-1/2		3"	
Spacing of Cleats	23-1/2	23-1/2	21	24x 19	19	21	19	22	-	20	
Number of Tarpaulins	3	3	1	3	1	1	3	3	-	3	

*Are wood fore and afters steel shod at all bearing surfaces? No fore and afters
 Are battens and wedges efficient and in good condition? Yes
 Are tarpaulins in good condition and in accordance with rule requirements? Yes
 Are lashings provided in accordance with rule requirements? Ring bolts fitted on side coamings of exposed cargo hatches and all exposed hatches fitted with locking bars.

Particulars of any special features:— Timber Load Line:

F'o'scle - length 31.23 ft. Height 7'-0" Poop height 7' 9" with Deckhouse enclosing Steering Engine.

Machinery casing on Freeboard Deck inside Bridge Space - height 9' 0".

Double bottom tanks fitted within half length of vessel have centre girder unpierced except in way of dry tank under boilers where centre girder has limber holes.
 Bulwark fitted in after and forward wells with top rail and stays to deck: freeing ports provided.

Timber sockets for uprights provided on Upper Deck and Bulwark Rail in accordance with load line rules, eye plates provided for lashings and riveted to sheerstrake in accordance with load line rule Clause 91.

Alternative steering arrangement by blocks and wires.

Endorsement at first survey and at surveys for renewal of Certificate:—

The fittings and appliances are in accordance with the particulars shown on this form (or as now modified) and are in good condition.



© 2021

Lloyd's Register Foundation