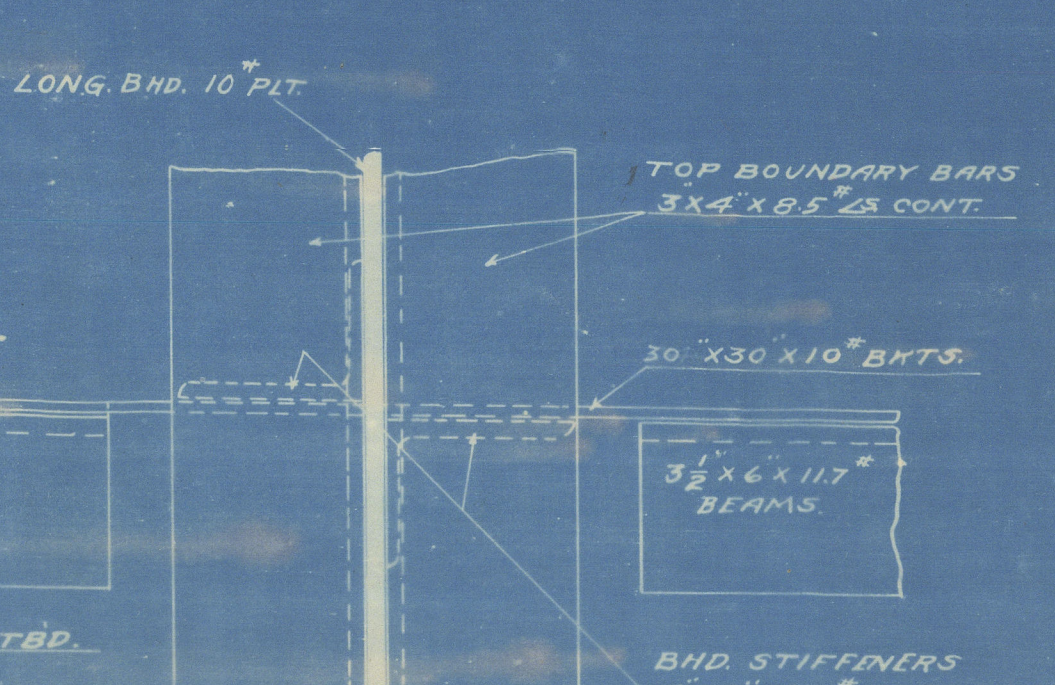
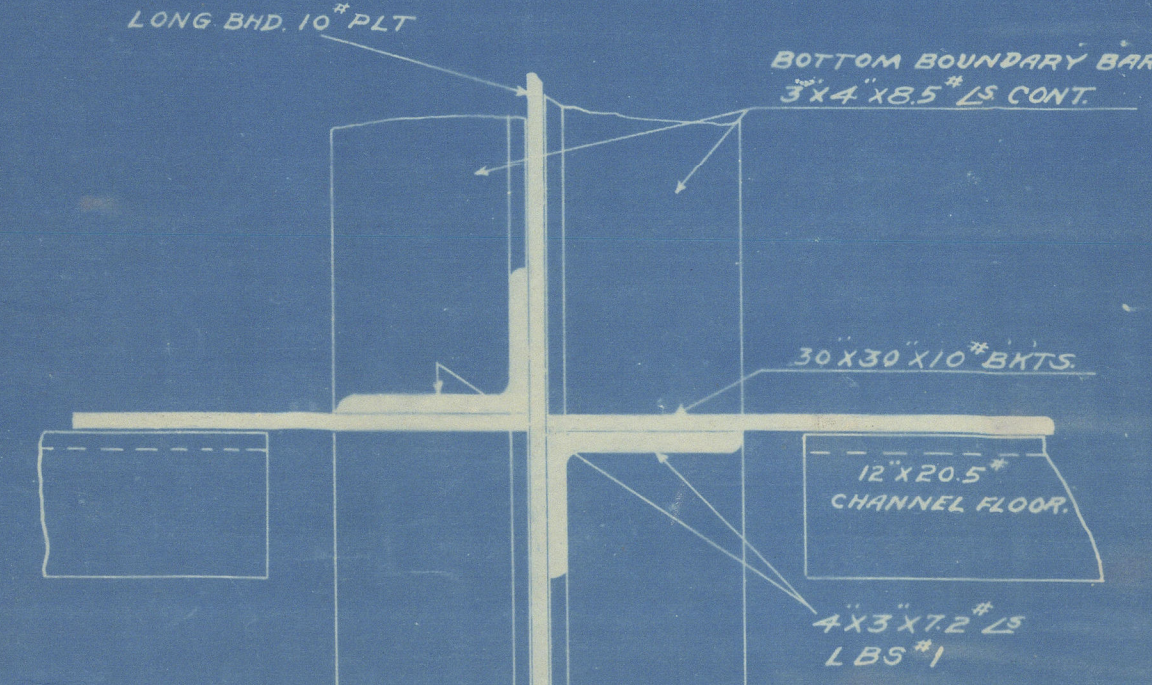


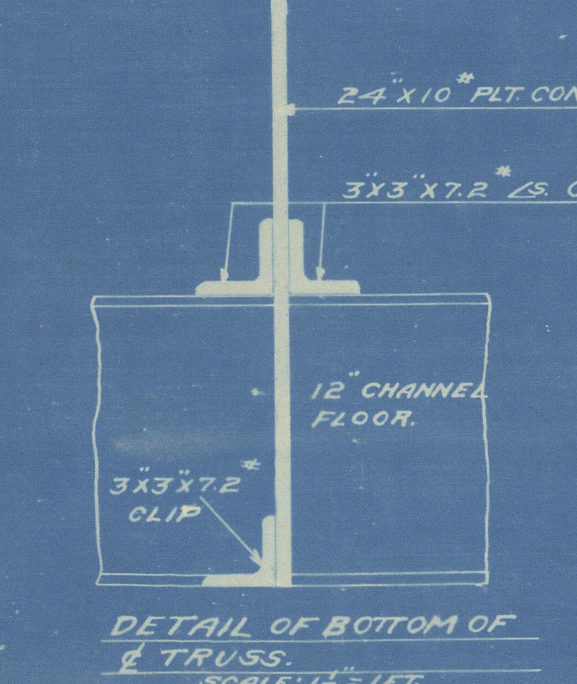
LONG. BHD.
LOOKING INBOARD FROM BND.
SCALE 1/2" = 1'-0"



DETAIL OF CONNECTION OF
LONG BHD. STIFFENERS & BEAM BNTS.
ON EVERY BEAM. (LOOKING DOWN FROM DECK.)
SCALE 1/2" = 1'-0"



DETAIL OF CONNECTION OF
LONG BHD. STIFFENERS & FLOOR BNTS.
ON EVERY FLOOR. (LOOKING DOWN.)
SCALE 1/2" = 1'-0"



DETAIL OF BOTTOM OF
B. TRUSS.
SCALE 1/2" = 1'-0"

DIMENSIONS
L.O.A. 183'-6"
L.B.P. 182'-6"
BREADTH MOULDED 48'-3"
DEPTH 9'-10"

| RIVETING SCHEDULE | | | |
|--|--------|--------|---------------|
| 1. RIVETING ON LONG. BHD. ELSEWHERE 3" | | | |
| PART | SEAMS | BUTTS | SPACING |
| SHELL FRG. B-65 | SINGLE | DOUBLE | O.T. |
| " AT ENDS | " | " | WT. |
| TRANS. BHD. | " | " | O.T. |
| " " BB | " | " | WEALED O.T. |
| " " STIF | " | " | O.T. |
| LONG. BHD. | " | DOUBLE | N.W.T. |
| " " BB | " | " | WEALED N.W.T. |
| " " STIF | " | " | N.W.T. |
| DECK FRG. B-65 | " | DOUBLE | O.T. |
| " AT ENDS | " | " | WT. |

IN GENERAL ALL RIVETING TO BE IN ACCORDANCE WITH LLOYD'S REGISTER OF SHIPPING RULES & REGULATIONS.

| | |
|---------------------|-------------------|
| SHELL PLATING | 12" |
| DECK | 12" |
| TRANS. BHD. PLATING | 10" |
| LONG. BHD. | 10" |
| PLATE BRACKETS | 10" |
| TIE PLATES | 10" |
| BHD. STIFFENERS | 3" x 7.2" |
| TRANS. TRUSS ANGLES | 3" x 7.2" |
| LONG | 3" x 7.2" |
| END | 3" x 7.2" |
| LONG. BHD. B. BARS | 3" x 7.2" DOUBLE |
| TRANS. BHD. B. BARS | 3" x 7.2" SINGLE |
| BEAMS ANGLES | 6" x 3" x 1/2" |
| FLOOR CHANNELS | 12" x 2.5" x 1/2" |
| FRAMES HOLD ANGLES | 6" x 3" x 1/2" |

11,500 BBL. OIL BARGE

Baraga
LONDON CORP.

Navigation Co. No 100

APPROVED
JAN 17 1919
NEW YORK

PRINTS
TANK SHIP BUILDING CORP.
NEWBURGH, N.Y.
HULLS NO. 15-16
GENERAL FRAMING PLAN
SCALES AS SHOWN

DRAWN BY JACOB
APPROVED BY JACOB

DRM 380