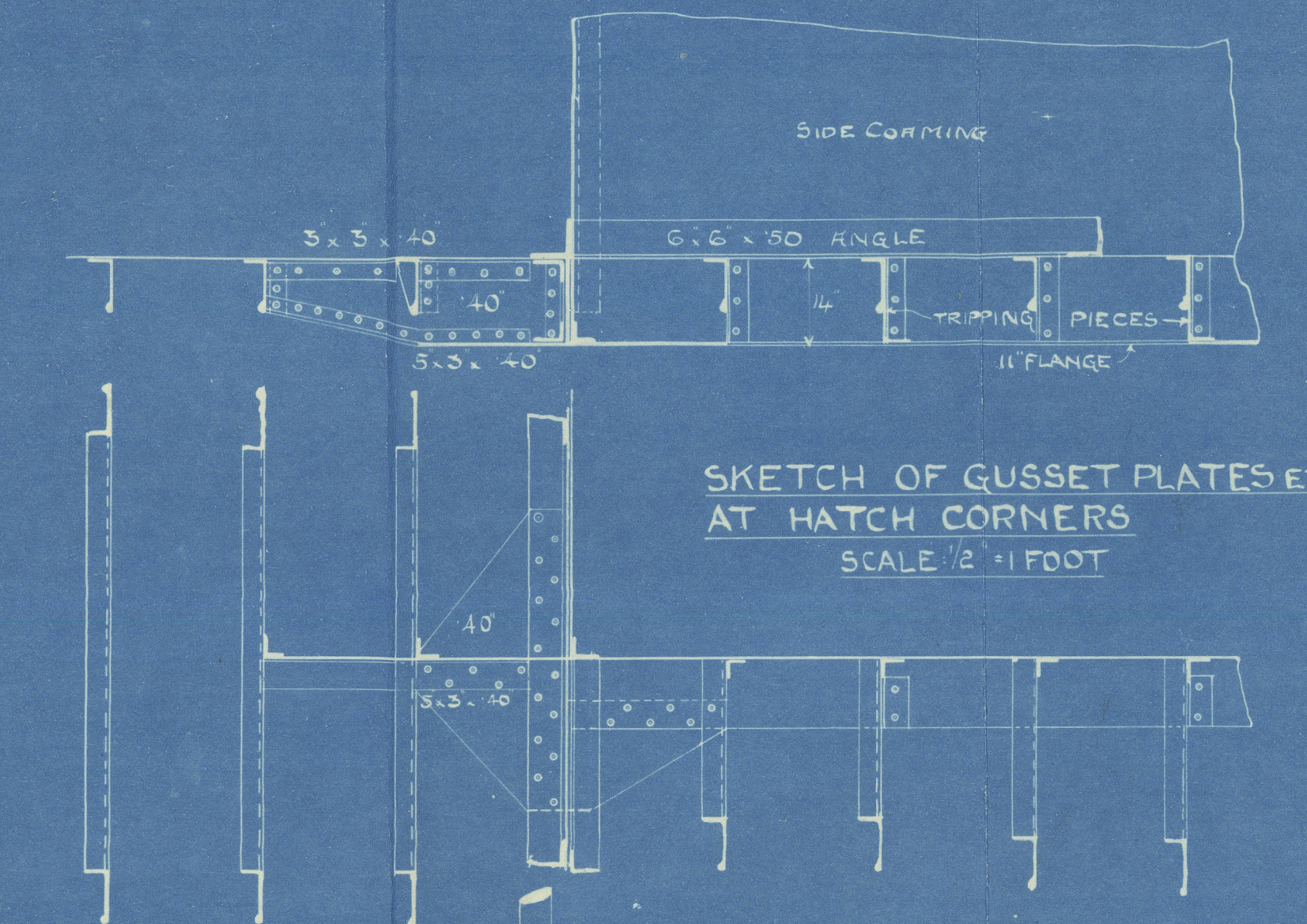
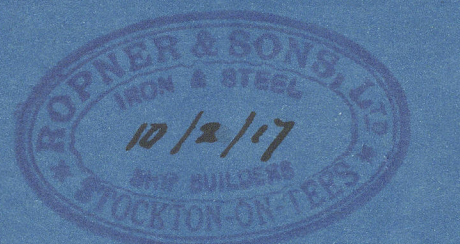


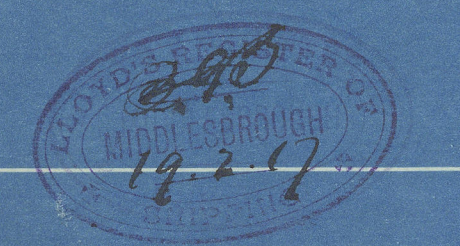
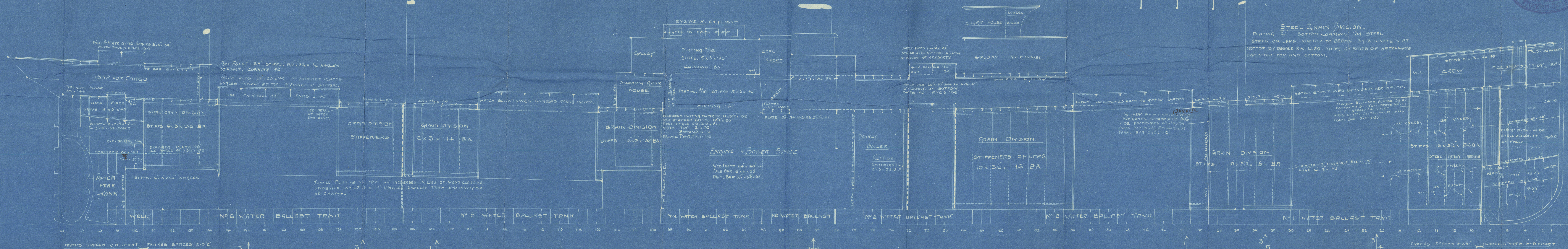
PROFILE
S.S. "ETHELARIC."
335'-0" x 48'-0" x 24'-10" MLD
SCALE 1/8" = 1 FOOT.



SKETCH OF GUSSET PLATES ETC.
AT HATCH CORNERS
SCALE 1/2" = 1 FOOT



STEEL GRAIN DIVISION.
PLATING 3/16" BOTTOM COAMING 3/4" STEEL
STIFFS ON LAPS RIVETED TO BEAMS BY 2 RIVETS + RT
BOTTOM BY DOUBLE RIV. LUGS. STIFFS AT ENDS OF HATCHWAYS
BRACKETED TOP AND BOTTOM.

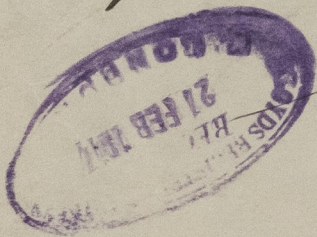


Mass. Register of Deeds
1850.

Proprietor & Hatch Company

ex Everett
Srs. Ethelarie

Inde report no. 9631



© 2021

Lloyd's Register
Foundation

007754-007761-0219