

PARTICULARS OF PROTECTION TO OPENINGS, ETC.

HATCHWAYS ON FREEBOARD AND SUPERSTRUCTURE DECKS											
ON UPPER DECK				BRIDGE DECK				CASING TOP		BRIDGE TWEEN DECKS	
Description of Hatchway	Nº1	Nº2	Nº3	Nº4	COALING HATCH	COALING HATCH	COALING HATCH	COALING HATCH	COALING HATCH	COALING HATCHES	HATCH IN FCLE.
Dimensions of Hatchway	26'-0" x 18'-0"	26'-0" x 18'-0"	26'-0" x 18'-0"	26'-0" x 18'-0"	5'-6" x 2'-9"	3'-6" x 2'-9"	15'-6" x 6'-0"	15'-6" x 3'-9"	18'-0" x 5'-0" AND SIDE HATCHES	4'-0" x 3'-9"	
COAMINGS	Height above Deck	28 1/2	28 1/2	28 1/2	24	24	14	14			
	Thickness	.48	.48	.48	.40	.40	.40	.40			
	Sides	.40	.40	.42	.40	.40	.40	.40			
	Stiffeners	NONE	NONE	NONE	NONE	NONE	NONE	NONE			
HATCH BEAMS	Brackets, Stays	NONE	NONE	NONE	NONE	NONE	NONE	NONE			
	Number	2	2	2	2						
	Spacing	8'-65"	8'-65"	8'-65"	8'-65"						
	Scantling and Sketch	36 x 36	36 x 36	36 x 36	36 x 36						
FORE AND AFTERS	Bearing Surface	3 1/2	3 1/2	3 1/2	3 1/2						
	Number	3	3	3	3						
	Spacing	4'-6"	4'-6"	4'-6"	4'-6"						
	Unsupported Lengths	8'-0"	8'-0"	8'-0"	8'-0"						
HATCH COVERS	Scantling* and Sketch	8 x 12	8 x 12	8 x 12	8 x 12						
	CENTRE	8 x 12	8 x 12	8 x 12	8 x 12						
	SIDE	8 x 12	8 x 12	8 x 12	8 x 12						
	Bearing Surface	3	3	3	3						
Spacing of Cleats	Material	W.P.	W.P.	W.P.	W.P.						
	Thickness	3	3	3	3						
	How fitted	TRANSVERSE	TRANSVERSE	TRANSVERSE	TRANSVERSE						
	Bearing Surface	2	2	2	2						
Number of Tarpaulins	2	2	2	2	2						
*Are wood fore and afters steel shod at all bearing surfaces? YES Are battens and wedges efficient and in good condition? YES Are tarpaulins in good condition and in accordance with rule requirements? YES Are lashings provided in accordance with rule requirements? YES											

Particulars of fiddley, funnel and ventilator coamings:—

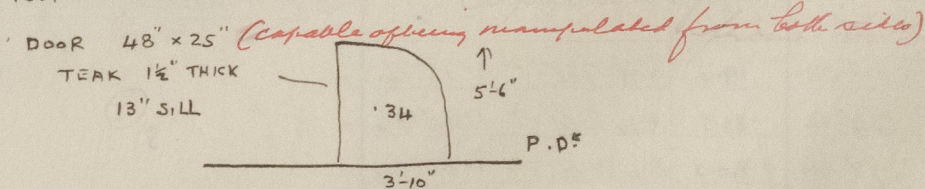
ENGINE SKYLIGHT OF STEEL OF SUBSTANTIAL CONSTRUCTION ✓
 FIDLEY OPENINGS ON CASING TOP PROTECTED BY HINGED STEEL PLATES ✓
 VENTILATORS TO ENGINE & BOILER SPACE ON CASING TOP IN GOOD CONDITION ✓

Particulars of Flush Bunker Scuttles:—

NONE ✓

Particulars of Companionways:—

1 ON POOP DECK OF STEEL

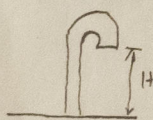


Particulars of Ventilators in exposed positions on freeboard and superstructure decks:—

1 VENTILATOR COAMING ON FORECASTLE DECK TO HOLD 36" HIGH x 15" DIA x 134 ✓
 1 " " IN AFTER WELL " " 36" x 15" x 40 ✓
 1 " " " " " " 36" x 15" x 40 ✓
 2 " " ON BRIDGE DECK TO HOLD 36" x 15" x 40 ✓
 1 " " " " " " 24" x 9" x 36 ✓

ALL VENTILATOR COAMINGS IN ACCORDANCE WITH RULES AND CLOSED WITH WOOD PLUGS & CANVAS COVERS. ✓

Particulars of Air Pipes in exposed positions on freeboard, raised quarter, or superstructure decks:—



NO AIR PIPES ON FORECASTLE DECK
 4 AIR PIPES IN FORWARD WELL TO D.B. TANKS 36 1/2" HIGH x 2 1/2" DIA.
 2 " " " AFTER " " " 36 1/2" x 2 1/2"
 2 " " ON BRIDGE DECK " " " 36 1/2" x 2 1/2"
 2 " " " " " " 10 1/2" x 6"
 1 " " ON POOP DECK TO A.P. TANK 36 1/2" x 2 1/2"

AIR PIPES CLOSED WITH CANVAS COVERS
 NO SNIFFING HOLES ✓

Particulars of Gangway Cargo and Coaling Ports:—

NONE



© 2020
 Lloyd's Register
 Foundation

Particulars of Scuppers and Sanitary Discharge Pipes —

NO SCUPPERS OR SANITARY DISCHARGES THROUGH SHIPS SIDE BELOW FREEBOARD DECK. ✓
Scuppers and sanitary discharges from the superstructure are fitted with storm valves

Particulars of Side Scuttles:

NO SIDE SCUTTLES BELOW FREEBOARD DECK. ✓
 SIDE SCUTTLES IN POOP ONLY 8" DIA. OF SUBSTANTIAL CONSTRUCTION AND FITTED WITH HINGED IRON DEADLIGHTS. ✓

Particulars of Guard Rails:—

GUARD RAILS ON POOP, BRIDGE AND FORECASTLE DECKS 3'-1" HIGH WITH 3 RODS.
 STANCHIONS 4'-6" APART. ✓

Particulars of Gangways, Lifelines, etc.:—

2" STEEL WIRE LIFE LINE FITTED ALONG TOP OF HATCHWAYS IN FORWARD AND AFTER WELLS WITH
 A GANGWAY BETWEEN HATCHWAYS AND HINGED LADDERS FROM TOP OF HATCHWAYS TO SUPERSTRUCTURE DECKS. ✓

Particulars of Freeing Arrangements.

	Length of Bulwark	Height of Bulwark	Size of Freeing Ports	Number each side	Area each side	Rule area each side
After Well	75'-0"	4'-1"	31 x 18, 31 x 18 36 x 21, 27 x 21	4	17.2 ✓	14.4 ✓
Forward Well	76'-0"	4'-1"	30 x 21, 30 x 18 31 x 18, 30 x 18	4	15.8 ✓	15.2 ✓
State position of each freeing port } After Well:— FROM BRIDGE END BHD 12'-7", 29'-0", 46'-9", 60'-3" ✓ (F. and A. position and height above deck edge) } Forward Well:— " " " 8'-7", 26'-6", 47'-0", 66'-9" ✓ State whether the freeing ports are fitted with shutters, bars, or rails, and give particulars of such:— FITTED WITH SHUTTERS. ✓ Additional area where sheer is less than standard.						

Particulars of Superstructures, Trunks, Casings, Deckhouses.

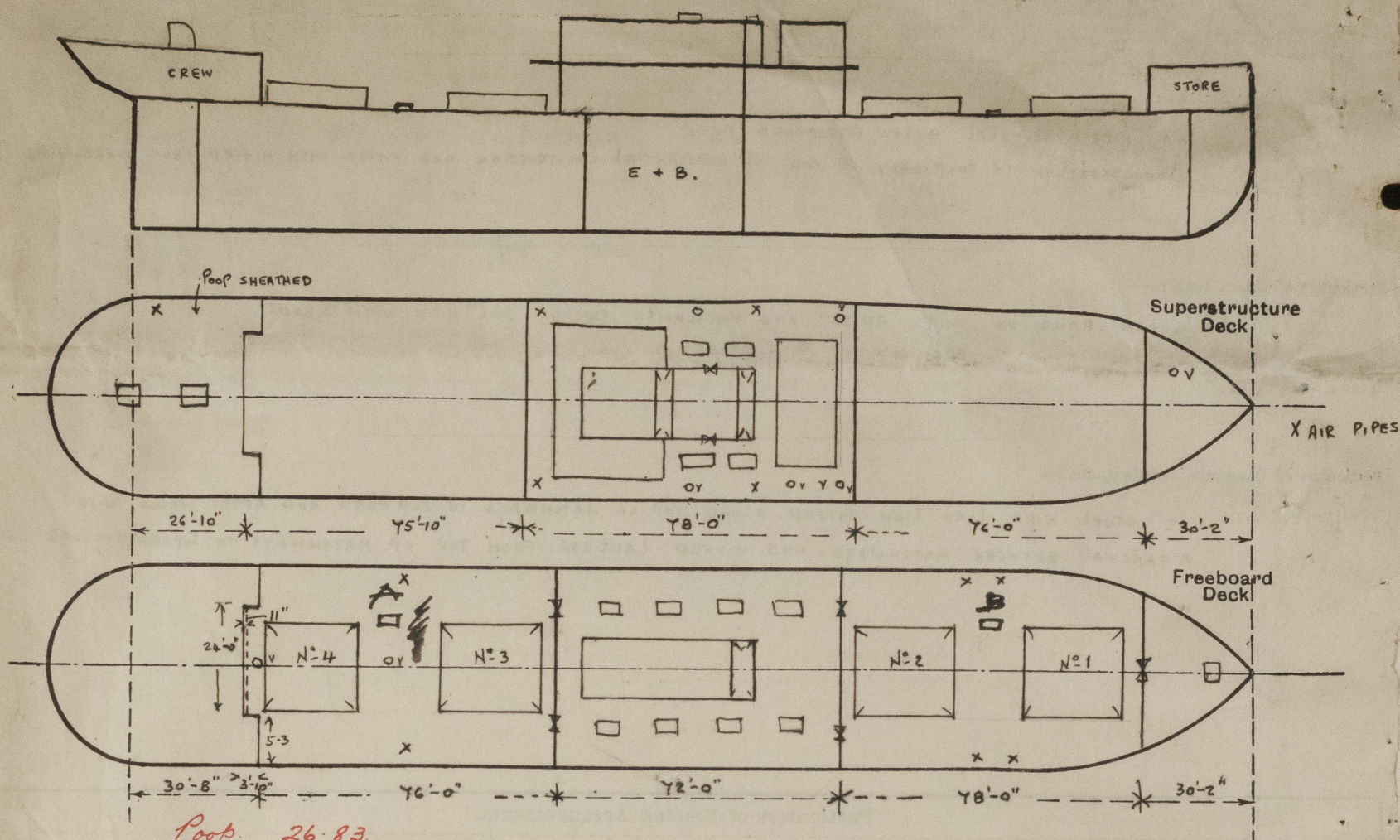
	Coaming	Plating	Stiffeners	Spacing	End Attachments of Stiffeners	Size of Openings	Height of Sills	Height of Casings
Poop Bulkhead	18 x 40 ✓	36 ✓	3½ x 3½ x 30 ✓	30 ✓	NONE ✓	NONE ✓	✓	✓
Raised Quarter Deck Bulkhead								
Bridge, After Bulkhead	18 x 40 ✓	36 ✓	3 x 3 x 30 ✓	45 ✓	NONE ✓	5'-6" x 3'-6" ✓	18" ✓	✓
Bridge, Forward Bulkhead	18 x 40 ✓	36 ✓	8 x 3 x 44 BH ✓	30 ✓	BRACKETS TOP & BOTTOM ✓	4'-4" x 2'-6" ✓	18" ✓	✓
Forecastle Bulkhead	NONE ✓	30 ✓	4½" FLANGES ✓	45 30 ✓	NONE ✓	5'-9" x 5'-0" ✓	24 ✓	✓
Trunk, Aft								
Trunk, Forward								
Exposed Machinery Casings on Freeboard or Raised Quarter Decks								
Exposed Machinery Casings on Superstructure Decks	18 x 30	28	3½ x 3½ x 30	42	NONE	4'-6" x 2'-0" ✓	18" ✓	7'-1" ✓
Machinery Casings within Superstructures not fitted with Class I Closing Appliances	18 x 30	26	3½ x 3½ x 30	42	NONE	NONE	✓	✓
Deckhouses on Flush Deck Ships								

Particulars of Closing Appliances (state if capable of being manipulated from both sides).

Poop Bulkhead	NONE ✓
Raised Quarter Deck Bulkhead	✓
Bridge, After Bulkhead	SHIFTING BOARD 3" THICK IN CHANNELS RIVETED TO BULKHEAD. ✓ <i>Extend to full height of opening</i>
Bridge, Forward Bulkhead	BOLTED PLATE. BOLTS 7" SPACING TAPPED THROUGH BULKHEAD PLATING ✓
Forecastle Bulkhead	SHIFTING BOARDS 3" THICK IN CHANNELS RIVETED TO BULKHEAD ✓ <i>Extend to full height of opening</i>
Exposed Machinery Casings on Freeboard or Raised Quarter Decks	
Exposed Machinery Casings on Superstructure Decks	STEEL PLATE DOORS MANIPULATED FROM BOTH SIDES ✓
Machinery Casings within Superstructures not fitted with Class I Closing Appliances	NONE ✓
Deckhouses on Flush Deck Ships	✓

Middlington

Superstructure bulkheads, trunks, deckhouses, casings, cargo and coaling hatchways, extent and thickness of sheathing on the freeboard deck, gangway, cargo and coaling ports, and any other openings, etc., which would affect the seaworthiness of the ship are to be shewn on the following sketches:—

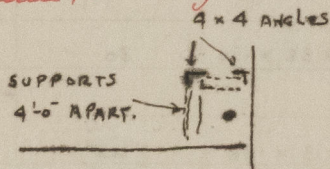


Poop. 26.83.
Sidehouses. $\frac{5.25 \times 3.83}{17.25} = 1.17$.
28.00

State any special features in the construction of the ship:— THIS VESSEL IS ENGAGED IN THE NORTH SEA AND BALTIC TRADE

TIMBER FREEBOARD REQUIRED.

BULWARK STANCHIONS IN WELLS 5'-0" APART STRONGLY CONNECTED TO DECK & BULWARK. NOT FITTED OVER BEAMS. ✓
 FITTINGS FOR UPRIGHTS FITTED IN FORWARD AND AFTER WELLS 10'-0" APART. AND 5'-0" FROM ENDS OF ERECTIONS. ✓
 EYEPLATE FOR LASHINGS RIVETED TO SHEERSTRAKE IN FORWARD AND AFTER WELLS 10'-0" APART AND 6 FT. FROM ENDS OF ERECTIONS. ✓
 CENTRE DIVISION OF DOUBLE BOTTOM TANKS PRACTICALLY WATERTIGHT FOR $\frac{1}{2}$ LENGTH AMIDSHIPS. ✓
 STEERING GEAR RODS LED ALONGSIDE HATCHWAY COAMINGS AND PROTECTED BY STRONG STEEL STRUCTURE ✓
Hand steering gear is fitted on the poop deck for emergency in the event of a breakdown in the main steering arrangements.



Builder's name and yard number CRAIG TAYLOR & CO LTD. N° 132

Names of sister ships NONE

Owners CORMACK S.S. CO LTD.

Fee £ 10 : 4 : 0 Received by me _____

Lt. Exp. 9/8.



© 2020
 Lloyd's Register
 Foundation