

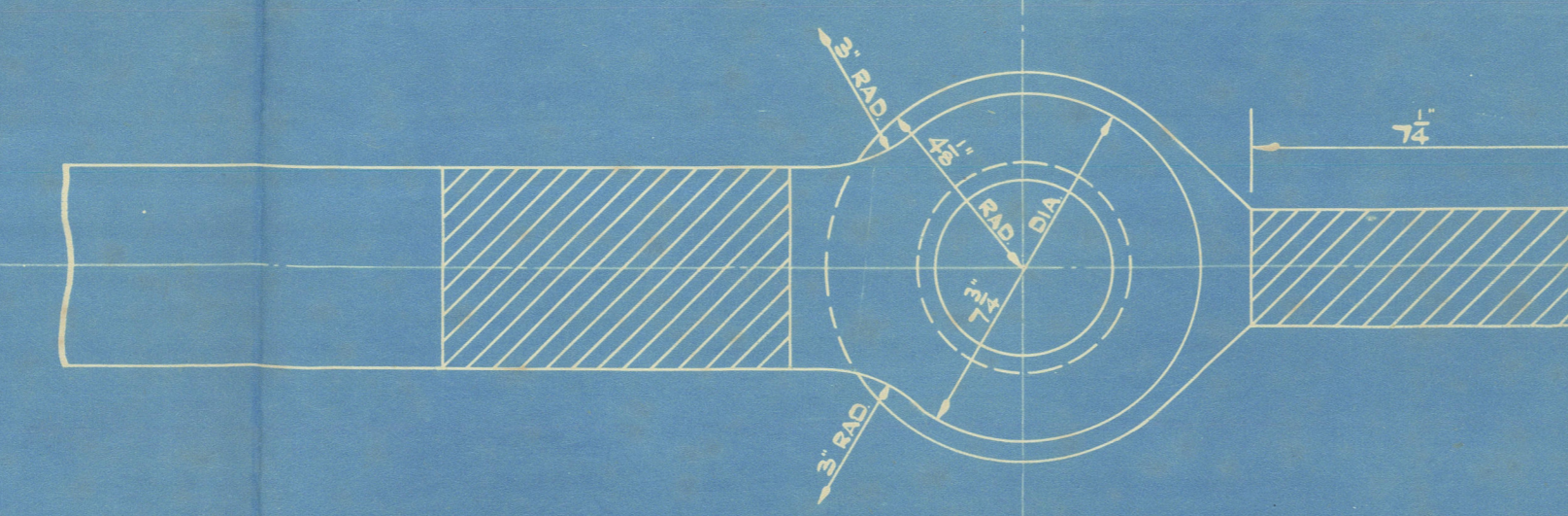
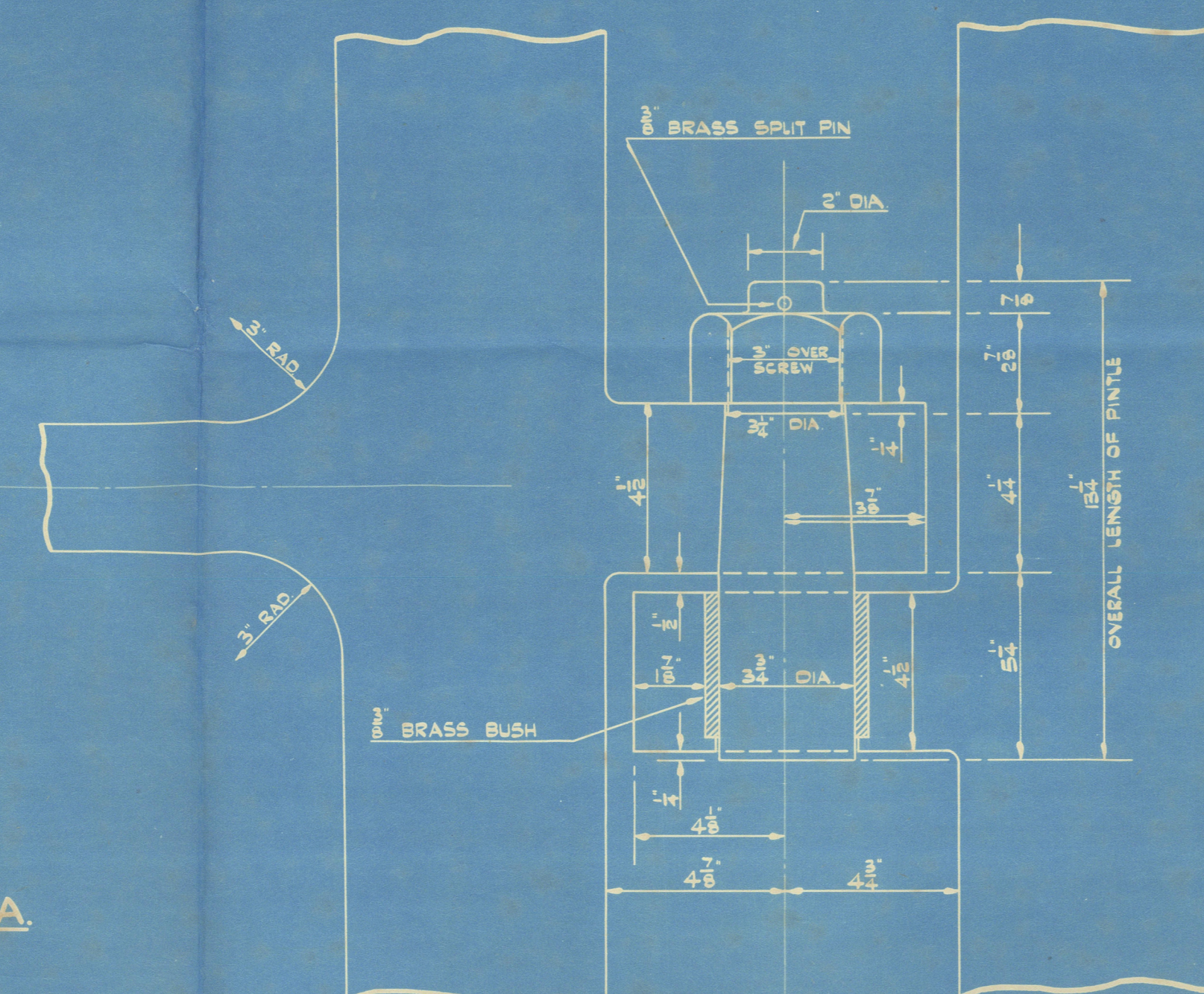
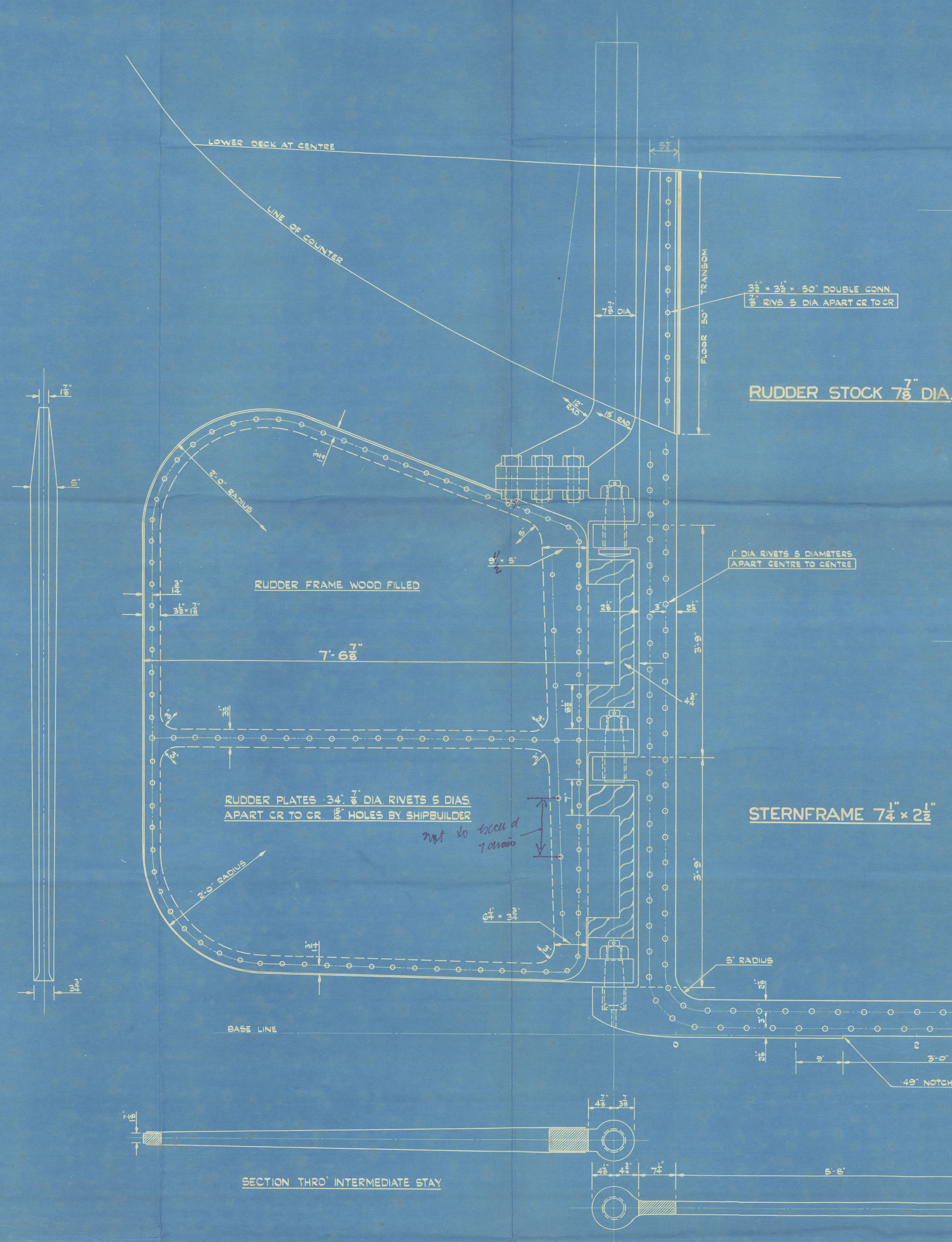
CORPORATION
OF
TRINITY HOUSE
THE ARGUS

DRAWING N^o 7
SCALE - $\frac{1}{2}$ " & 3" = 1 FOOT

RUDDER & STERNFRAME

FERGUSON BROS
(PORT GLASGOW) LTD
SHIPBUILDERS & ENGINEERS

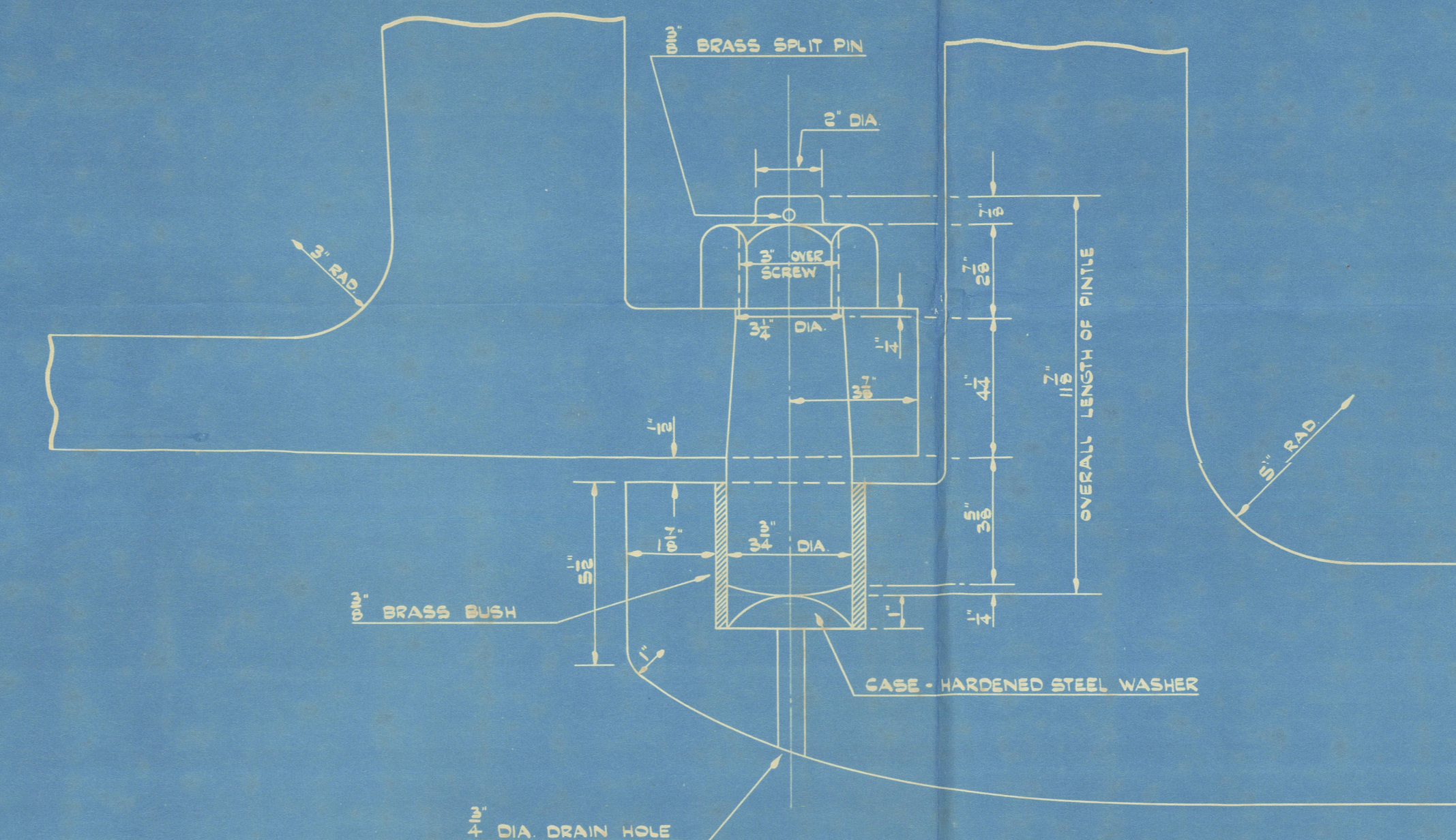
YARD N^o 351 DATE 25-10-45



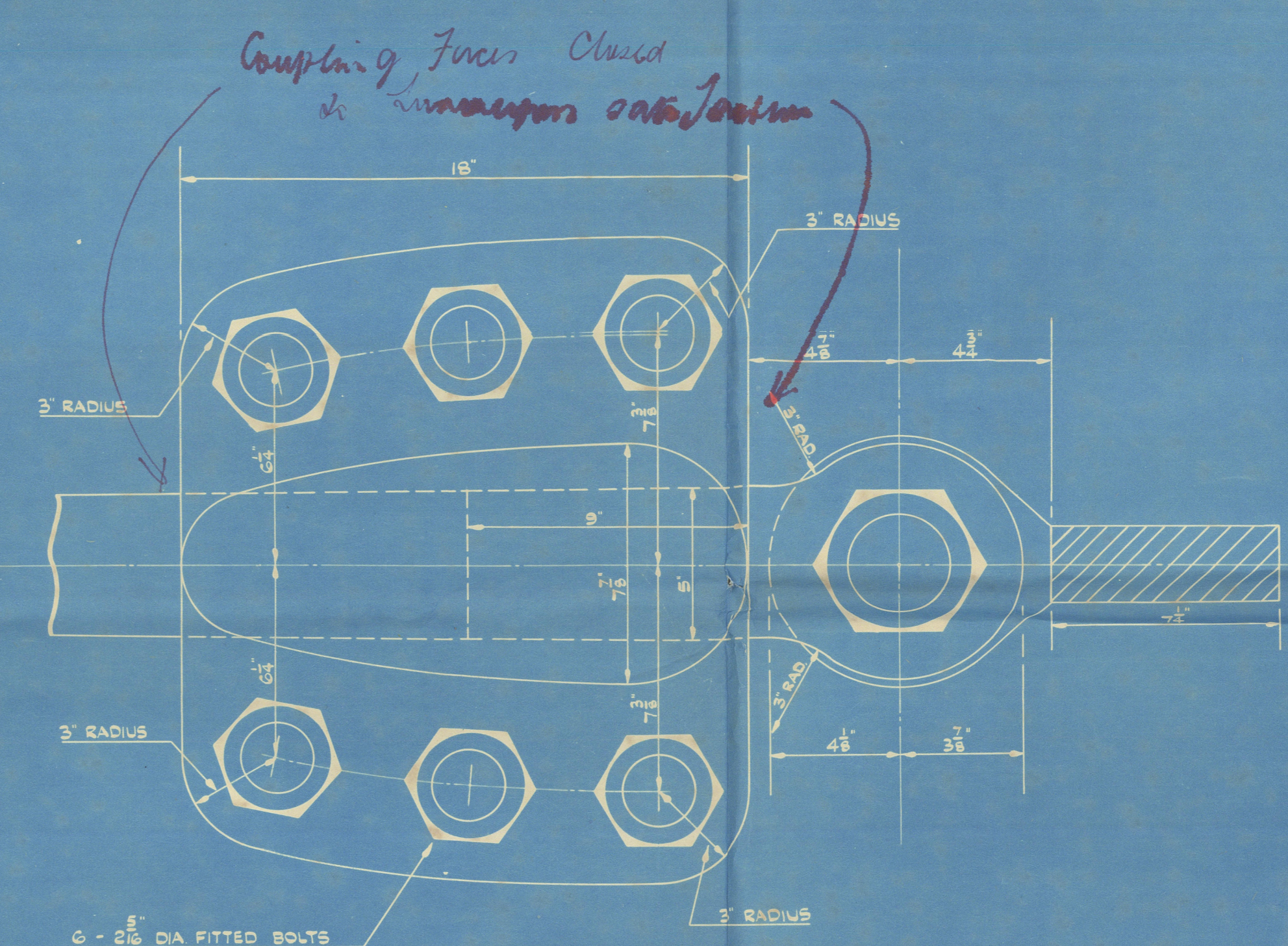
DETAIL OF INTERMEDIATE PINTLE
SCALE - 3" = ONE FOOT

STERNFRAME } MATERIAL - FORGED STEEL TO
RUDDER FRAME } LLOYD'S CLASSIFICATION & TESTS

FIRST LONGITUDINAL NUMBER $L \times D = 251 \times 26 = 6526$
DISTANCE OF C.G. ABAFT CR. LINE OF PINTLES = 4.0'
AREA OF RUDDER = 59.87 SQUARE FEET
 $A \times D = 59.87 \times 4.0 = 239.48$
SPEED = 13 1/2 KNOTS
DIAMETER OF RUDDER STOCK = 7 1/8"

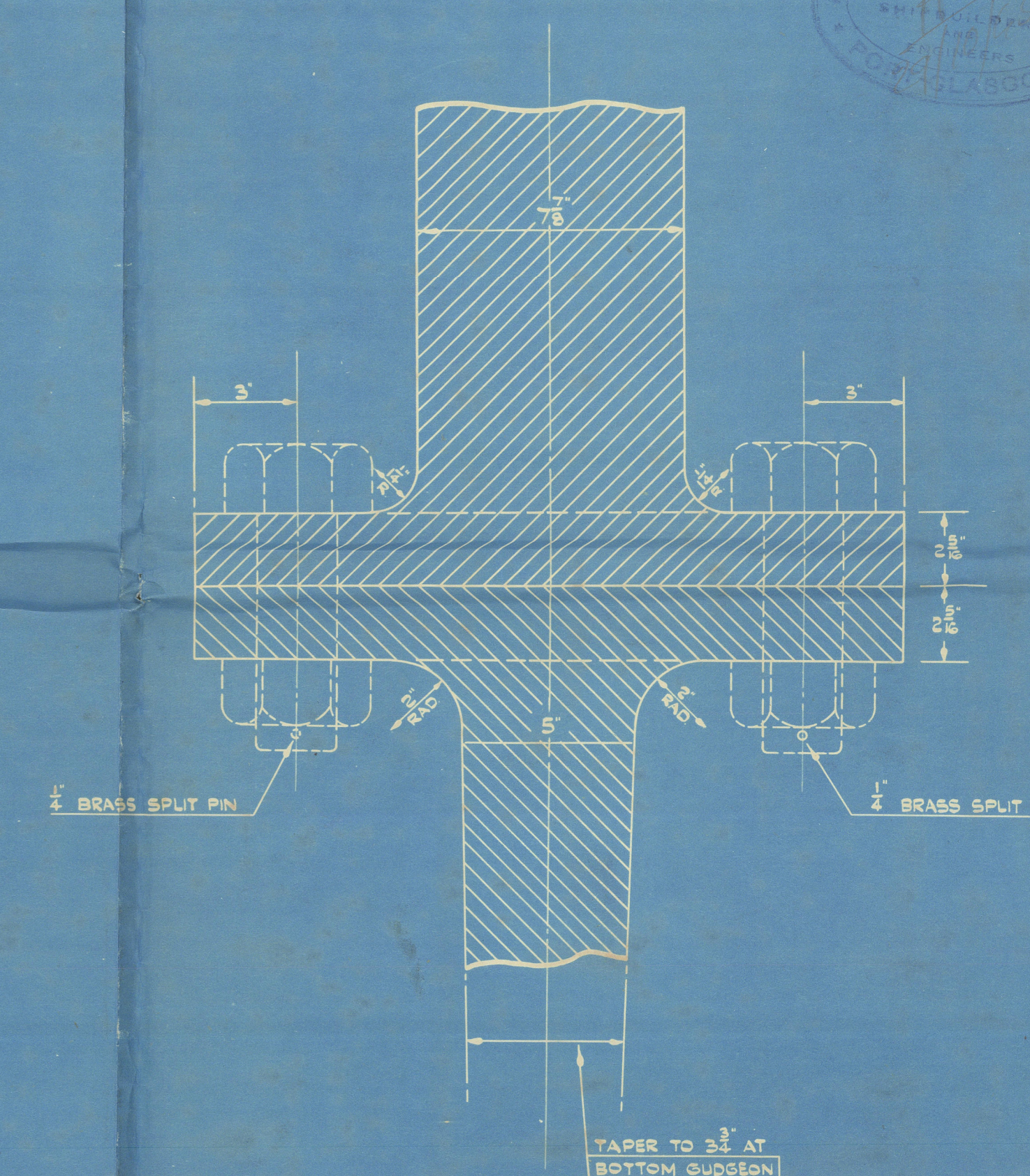


DETAIL OF BOTTOM PINTLE
SCALE - 3" = ONE FOOT



PLAN VIEW OF COUPLING
SCALE - 3" = ONE FOOT

APPROVED
LLOYD'S REGISTER OF SHIPPING



SECTIONAL ELEVATION OF COUPLING
SCALE - 3" = ONE FOOT

PLAN N^o 7
YARD N^o 351
25-10-45

FERGUSON BROS (P.G.) L^D

YARD N^o 381

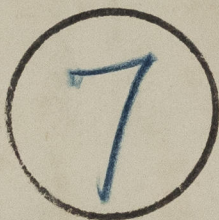


STERNFRAME & RUDDER

"ARGUS"



GKK. FIRST ENTRY REPORT N^o 23608.



© 2020

Lloyd's Register
Foundation

007731-007738-0214