

SHIP N° 591.

M. V. "ROCK"

PROFILE & DECK PLAN.

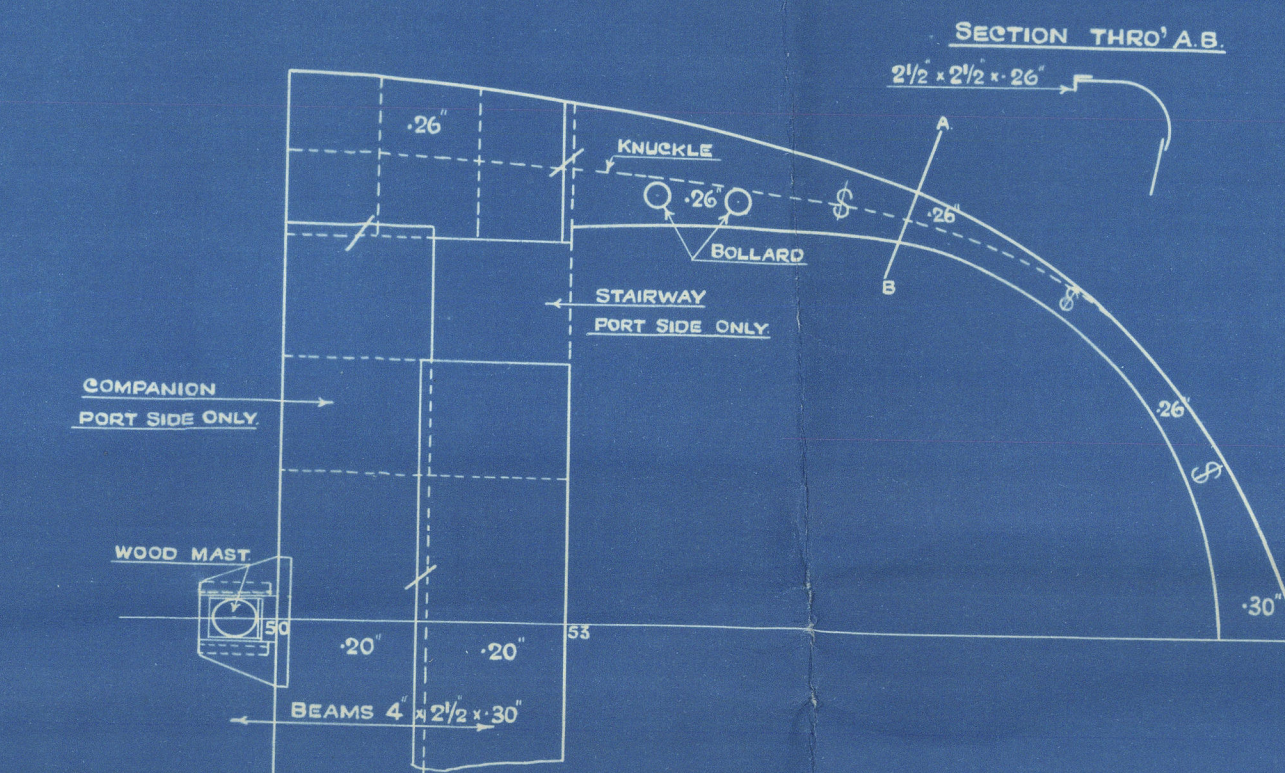
SCALE $\frac{1}{4}$ " = 1 FOOT.

DIMENSIONS.

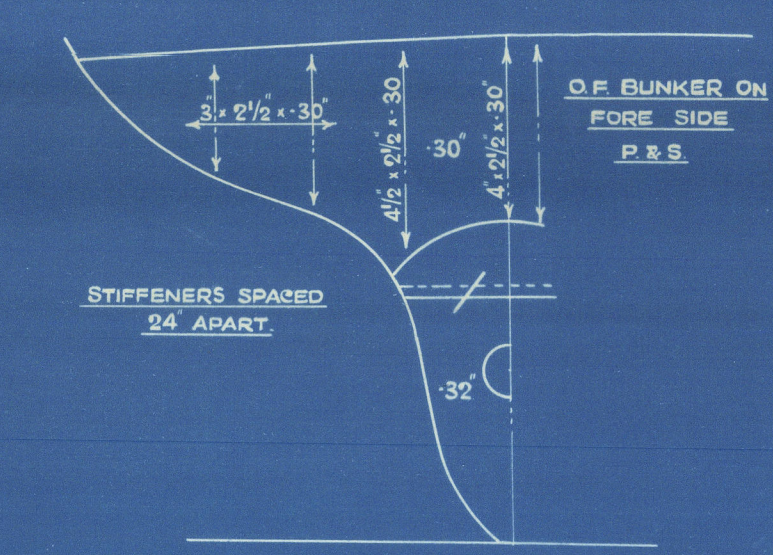
LENGTH OVERALL 120'-7"
BREADTH M¹ 24'-0"
DEPTH M¹ TO UPPER DK. 4'-8"

SHEER ON UPPER DECK. FORW 44' AT P.P.
AFT 15' AT A.P.

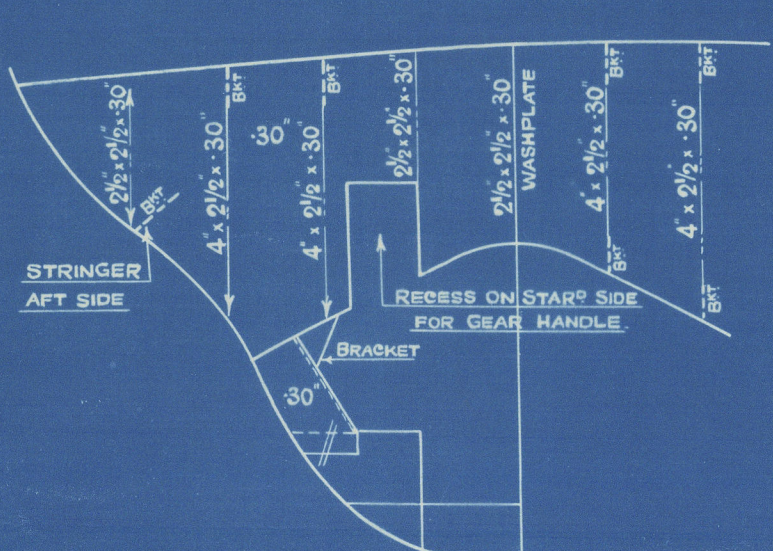
MONKEY FORECASTLE DECK.



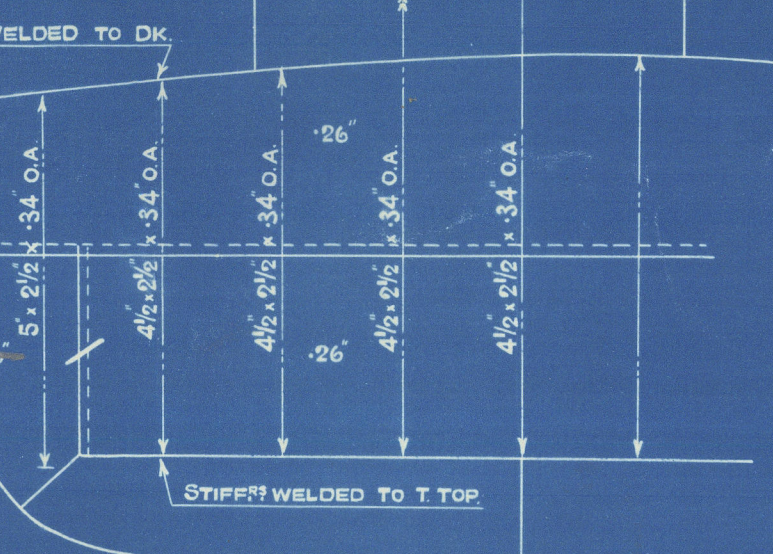
N° 4 BULKHEAD.



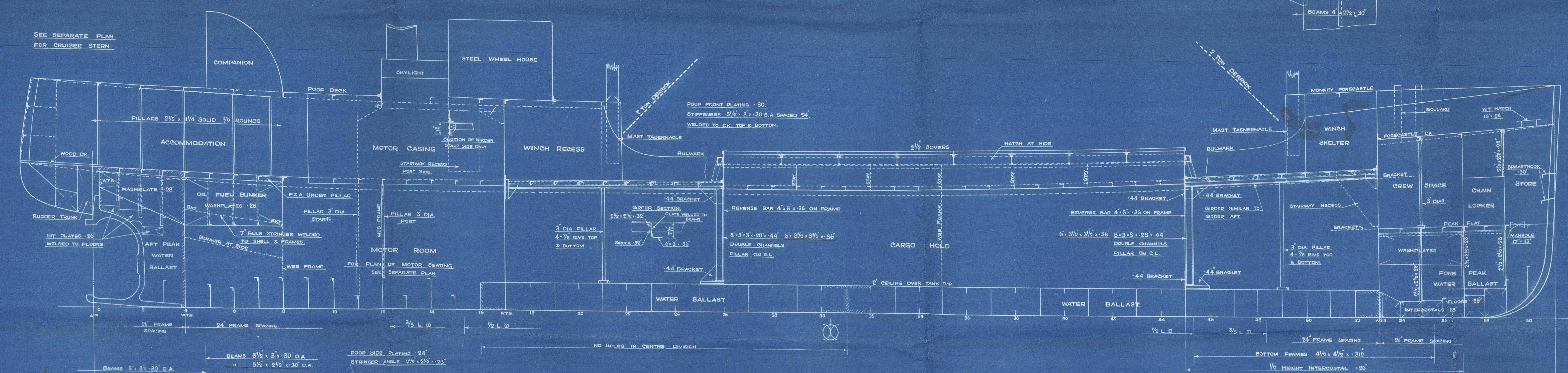
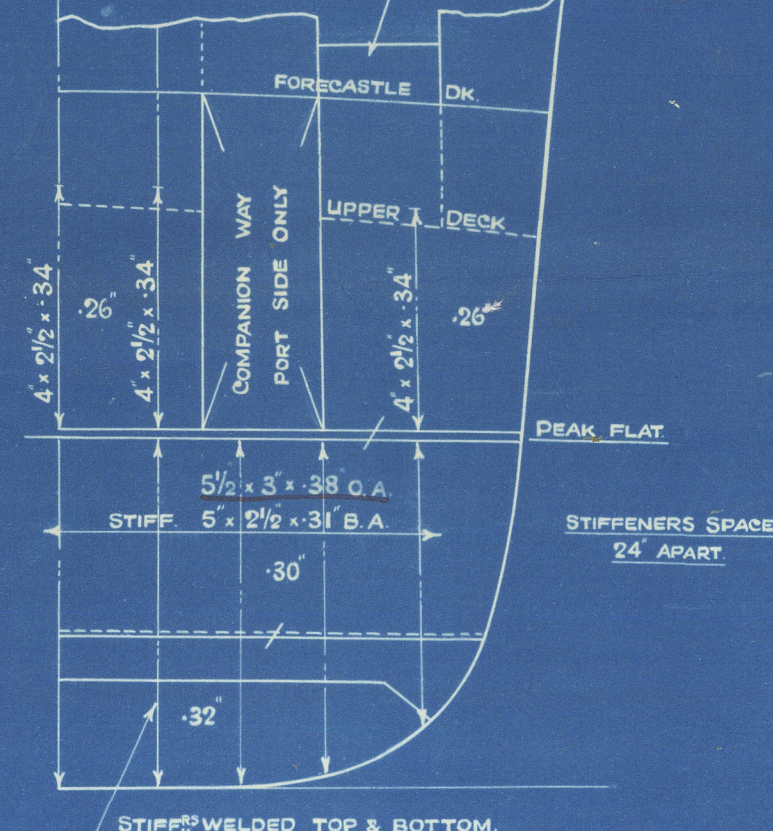
N° 8 BULKHEAD.



N° 17 BULKHEAD.

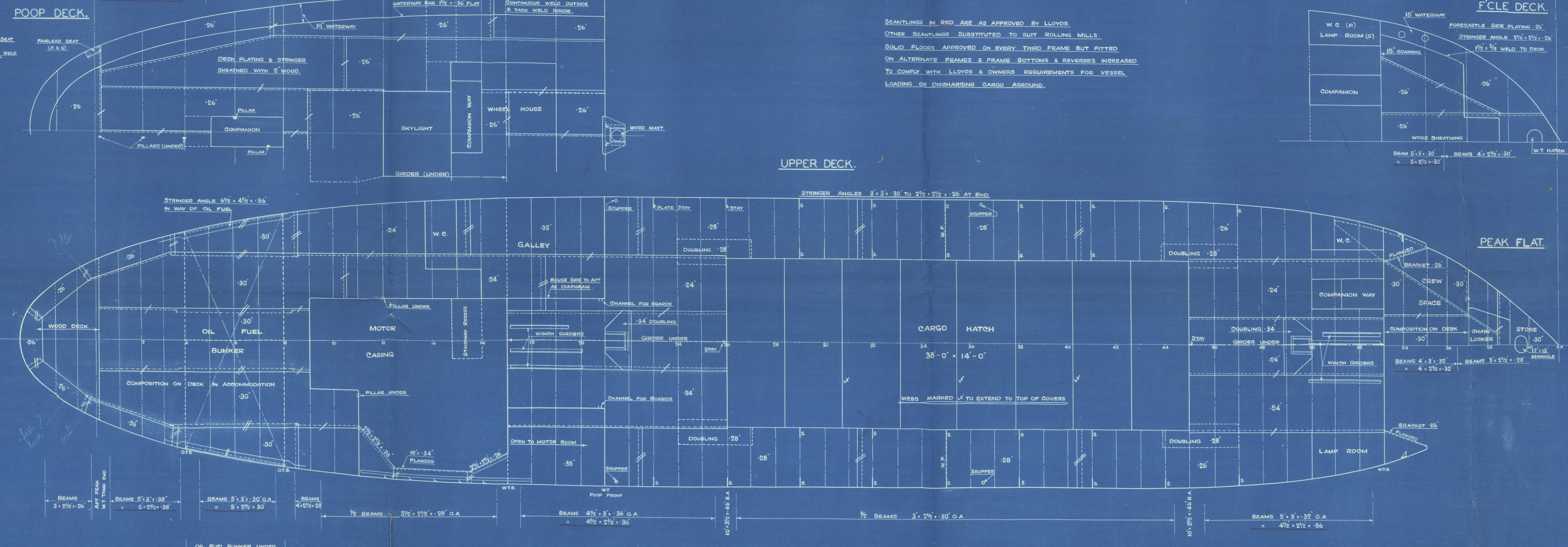


N° 53 BULKHEAD.



SCANTLINGS IN RED ARE AS APPROVED BY LLOYDS.
OTHER SCANTLINGS SUBSTITUTED TO SUIT ROLLING MILLS.
SOLID FLOORS APPROVED ON EVERY THIRD FRAME BUT FITTED
ON ALTERNATE FRAMES & FRAME BOTTOMS & REVERSES INCREASED
TO COMPLY WITH LLOYDS & OWNERS REQUIREMENTS FOR VESSEL
LOADING OR DISCHARGING CARGO ABOARD.

UPPER DECK.



PEAK FLAT.



Profile & Dk Plans
As BUILT

Hawthorn Leslie
591

ms. "ROCK"
NEWCASTLE ON TYNE.
Report No. 90909.



© 2020

Lloyd's Register
Foundation

007714-007721-0230