

LLOYD'S CLASS 100 A. 1. "WITH FREEBOARD."

N.B. ALL SECTIONS USED THROUGHOUT THE SHIP ARE
REVISED BRITISH STANDARD SECTIONS.

PRINCIPAL DIMENSIONS		
LENGTH	(L)	445'0"
BREADTH MOULDED	(B)	60'6"
DEPTH " TO UPPER DECK		40'9"
LOADED DRAUGHT (FROM TOP OF KEEL)		28'03"
DEPTH "D" FOR SCANTLING NUMERALS	(D)	40'75"

SCANTLING NUMERALS		
1 st LONGITUDINAL NUMERAL (L/D)	=	445/4075 = 18.134
2 nd " " " " (L/B)	=	445/10125 = 45.056
PROPORTION TO UPPER DECK	%	= 445/4075 = 10.92

EQUIPMENTS & EQUIPMENT NUMBER		
EQUIPMENT NUMBER	46196	
LETTER	dt	
EQUIPMENTS		
3-BOWER ANCHORS STOCKLESS, COLLECTIVE	232	CWT
STREAM ANCHOR ORDINARY EX STOCK	232	
STUD CHAIN CABLE	300	PHS
STEEL WIRE FOR STREAM ANCHOR	120	4 1/2 CIR. 12 WIRELS
TOW LINE STEEL WIRE	130	5 1/2 CIR. (DE.)
HAWSER MANILA	2-100	PHS
WARPS	2-100	PHS

FORGING & CASTING		
STEM (ROLLED MILD STEEL)		10 1/2 x 2 1/2
STERN FRAME AS PER PLAN		

KEEL & SHELL PLATING		
KEEL PLATE		55 x 85 ~ 75
BOTTOM		.67 ~ .52
SIDE		.65 ~ .49
BOSS		.75
FEEL SIDE PLATE		.44
SHEER STRAKE		63 x 78 (RULE SIZE 52 x 74) ~ 49
BELOW SHEER STRAKE		.65 (RULE SIZE 52 x 70) ~ 49

ENGINE CASING		
COAMING PLATE		30, 34 WHERE EXPOSED
CASING		26, 30
COAMING ANGLE		3 x 3 x 30A 3 x 3 x 34A
STIFFENERS		3 x 2 1/2 x 30A 33" SPACED APART

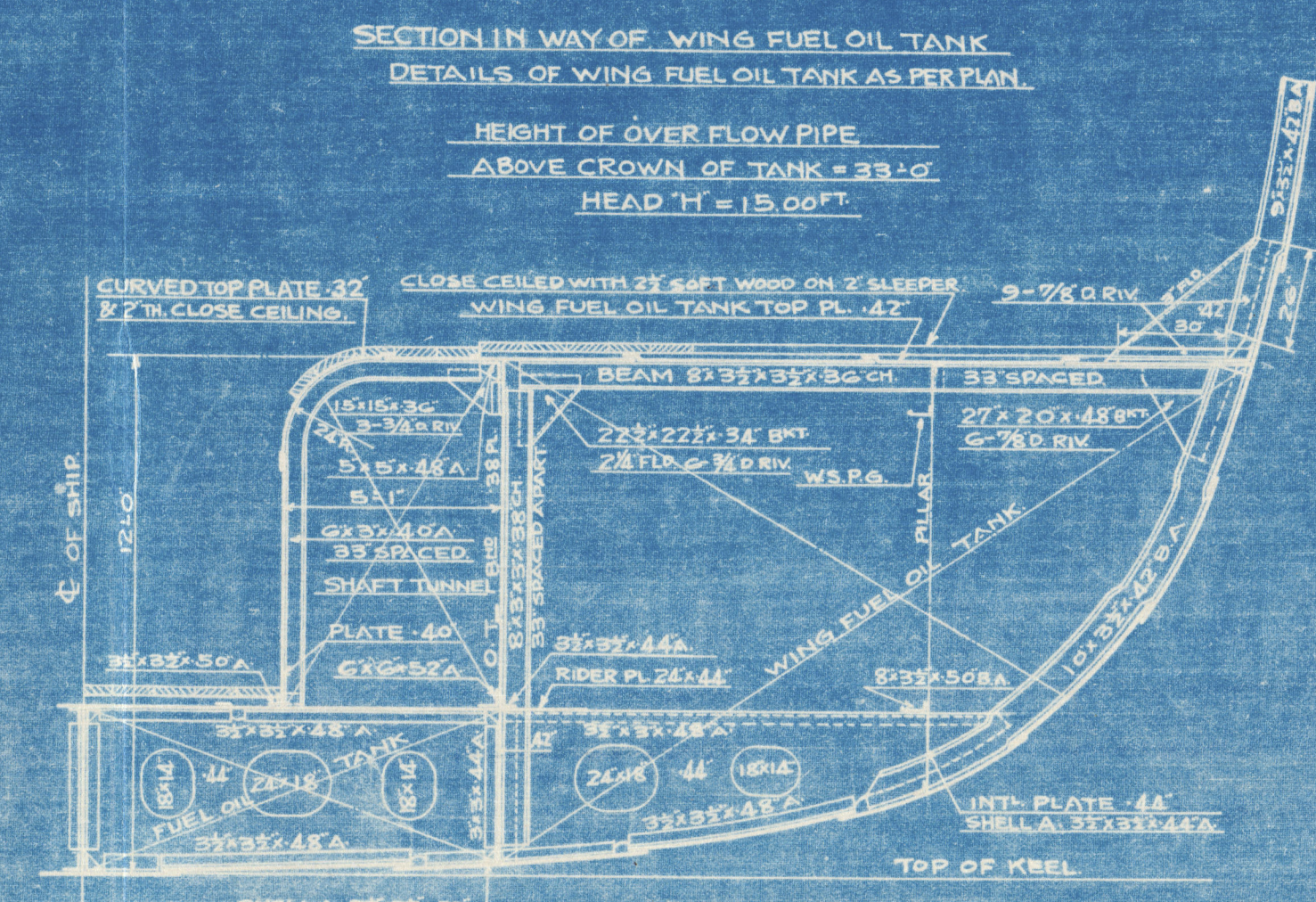
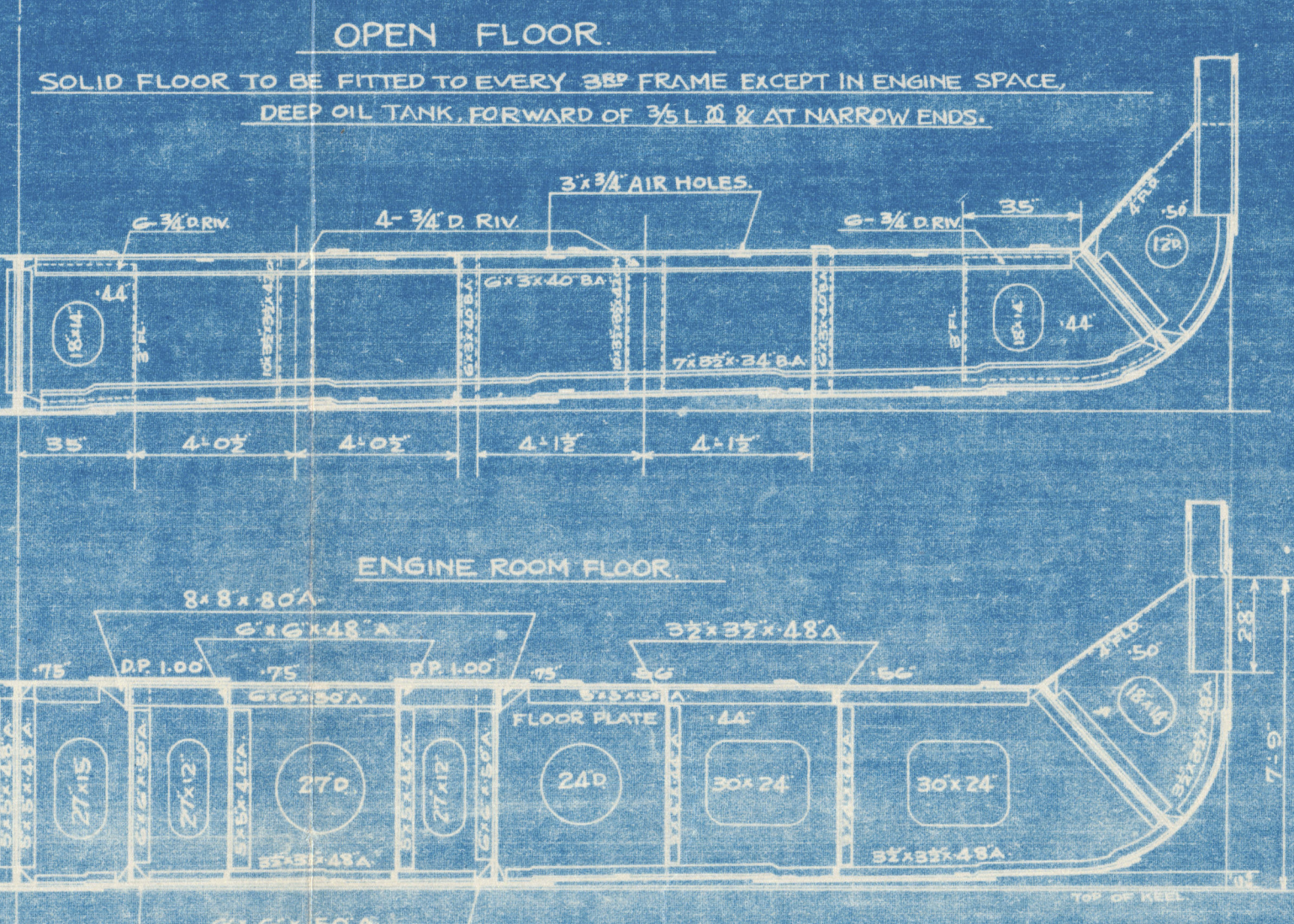
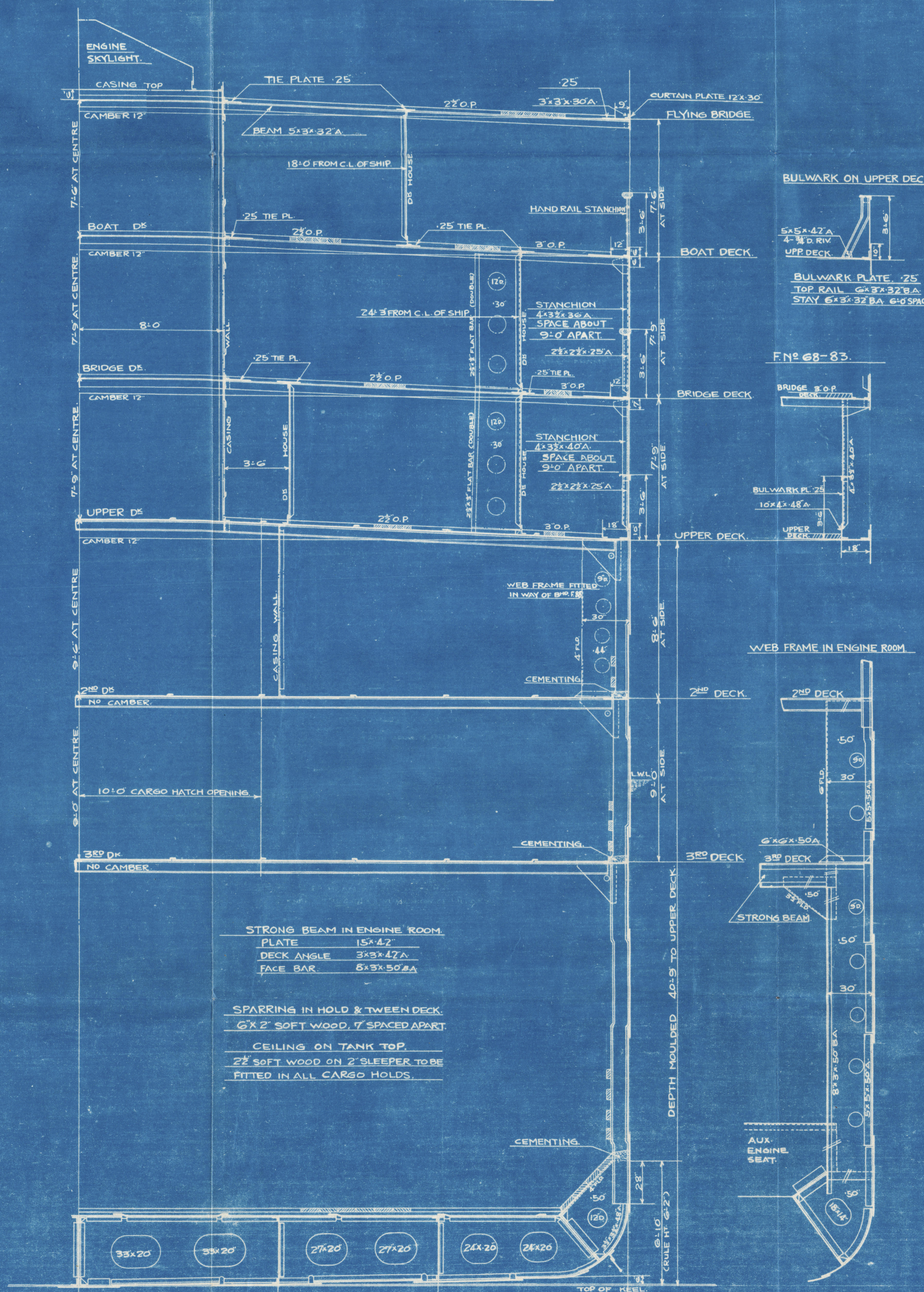
DECK HOUSES			
	UPPER DECK	BRIDGE DECK	BOAT DECK
COAMING PLATE	30	28	25
HOUSE PLATE	25	25	25
COAMING ANGLE	6 x 3 x 32A	6 x 3 x 32A	6 x 3 x 32A
TOP	3 x 3 x 30A	3 x 3 x 28A	2 1/2 x 2 1/2 x 25A
STIFFENERS	3 1/2 x 2 1/2 x 32A	3 x 2 1/2 x 30A	3 x 2 1/2 x 25A
" SPACING	SPACED ABOUT 33" APART		

BILGE KEEL (115' G. AMIDSHIPS)		
BULB PLATE		10 1/2 x 50
CONNECTING BAR		5 x 3 1/2 x 50A
DEPTH OF GIRDER		13

DOUBLE BOTTOM			
CENTRE	PLATE	1/2 L. 00 ~ ENDS	ENGINE SPACE
GIRDER	KEEL ANGLE	46 x 67 ~ 48	60 x 67
	TOP	5 x 5 x 66 ~ 60DA	5 x 5 x 66 DA
	VERT.	3 1/2 x 3 1/2 x 56 ~ 52DA	3 1/2 x 3 1/2 x 56 DA
	PLATE	55 x 48A	55 x 48A
SIDE	PLATE	.44	.44
GIRDER	TOP ANGLE	3 1/2 x 3 1/2 x 48A	3 1/2 x 3 1/2 x 48A
	BOTTOM	3 1/2 x 3 1/2 x 48A	3 1/2 x 3 1/2 x 48A
	VERT.	3 1/2 x 3 1/2 x 42A	3 1/2 x 3 1/2 x 42A
	PLATE	.44	.44
SOLID	FRAME	3 1/2 x 3 1/2 x 48A	3 1/2 x 3 1/2 x 48A
FLOOR	REV. FRAME	"	"
	PLATE	.57	.57
W.T.	BOUNDARY A	3 1/2 x 3 1/2 x 52A	3 1/2 x 3 1/2 x 52A
FLOOR	STIFFENER	3 1/2 x 3 1/2 x 48A	3 1/2 x 3 1/2 x 48A
	M.L. STRAKE	56 x 56 ~ 46	75
INNER	OTHER	48 ~ 42	.56
BOTTOM	MARGIN PL.	40 x 56	.56
	TOP SHELL A	5 x 5 x 56A	5 x 5 x 56A

STRENGTHENING OF BOTTOM FORWARD
FROM FORWARD OF 3/4 L. 00 TO COLLISION BULKHEAD.
PITCH OF RIVET IN FRAME TO BE 5 1/2 D (TWO COMPLETE ROW ON BOTH FLANGES). FRAME ANGLE 5 x 5 x 48 FROM MARGIN PLATE TO MARGIN PLATE.
INT'L ADDITIONAL SIDE GIRDER TO BE FITTED AT 4' 0" APART & 2" HT. GIRDER EXTENDING AS FAR FORWARD AS PRACTICABLE.
FLOOR PLATE OR INT'L SIDE GIRDERS ARE NOT TO BE FLANGED SHELL PLATINGS. THREE STRAKES NEXT THE KEEL TO HAVE MIDSHIP THICKNESS .67" MAINTAINED (FORWARD TO COLLISION 6 1/2").

RIVETING NOTE (EDGE CONNECTION)		
KEEL PLATE	2R	2R
BOTTOM PLATE	"	"
SIDE PLATE	"	"
SHEER STRAKE	"	"
BELOW STRAKE	2R	2R
FEEL SIDE PL.	"	"
M.L. STRAKE	2R	1R
OTHER	2R	2R
MARGIN PLATE	2R	2R
UPPER STRINGER PL.	1R	1R
" PLATE	"	"
ALL OTHER DE PL.	1R	1R
	1/2 L. 00	AT ENDS



DECKS			
	BOAT DECK	BRIDGE DECK	FEEL DECK
STRINGER PLATE	27 x 30	30 x 37	35 x 38A
" ANGLE	3 x 3 x 30A	3 x 3 x 32A	3 1/2 x 3 1/2 x 38A
SHELL ANGLE	FLAT BAR .46 WELDED		
G. WATER WAY ANGLE	25 TIE PLATE		
DE PLATE	12 x 30	25 TIE PLATE	36
CURTAIN PLATE	12 x 30	BULWARK PL. 25	
WOOD PLANK	5 x 5 WHERE EXPOSED	5 x 5 WHERE EXPOSED	5 x 5 WHERE EXPOSED

TANK SIDE BRACKETS			
	NO. 4 & 5 G. HOLDS	ENGINE ROOM	15' L. FROM STEM ELSE WHERE
PLATE	50	50	50
GUSSET PLATE	CONTINUOUS	CONTINUOUS	CONTINUOUS
TO FRAME	15 7/8 D. RIV.	22 7/8 D. RIV.	15 7/8 D. RIV.
TO GUSSET	6 7/8 D. RIV.	8 7/8 D. RIV.	7 7/8 D. RIV.
TO MARGIN PLATE	15 7/8 D. RIV.	22 7/8 D. RIV.	15 7/8 D. RIV.
VANGUE ON MARGIN PL.	5 x 5 x 48A	5 x 5 x 48A	5 x 5 x 48A
" ON FLOOR PL.	5 x 5 x 48A	5 x 5 x 48A	5 x 5 x 48A
GUSSET PLATE	50	48	48
NE OF RIV. IN WAY TO FRAME	22 7/8 D. RIV.	22 7/8 D. RIV.	22 7/8 D. RIV.
OF TANK TOP PLATE	20 7/8 D. RIV.	20 7/8 D. RIV.	20 7/8 D. RIV.

FRAMINGS	
FRAME SPACE	
BOTH PEAKS	24
FORWARD OF 3/4 L. 00	27
ELSE WHERE	33

FRAMING DEPTH (d)		
	ACTUAL (d)	CORRECTED (d)
IN WAY OF ENGINE ROOM	18' 3"	18' 0"
" HOLD	19' 5"	19' 1"
" WING F.O. TANK	8' 2"	19' 4"
" DEEP FRAME SYSTEM	23' 0"	23' 0"

RIVETING NOTE (END CONNECTION)		
	1/2 L. 00	AT ENDS
KEEL PLATE	LAPPED & 4R	LAPPED & 3R
BOTTOM	"	"
SIDE	"	"
SHEER STRAKE	"	"
BELOW	"	"
FEEL SIDE PLATE	"	"
INNER BOTTOM 1"	"	"
M.L. STRAKE	LAPPED & 3R	LAPPED & 2R
OTHER	"	"
MARGIN PLATE	"	"
CENTRE GIRDER	"	"
UPPER DE STRINGER PL.	4R	3R
" PLATE	4R	3R
2 nd DE STRINGER PL.	3R	2R
" PLATE	2R	1R
3 rd DE STRINGER PL.	1R	1R
" PLATE	1R	1R
FEEL DE STRINGER PL.	"	"
" PLATE	"	"
BRIDGE DE STRINGER PL.	LAPPED & 1R	1R
" PLATE	"	"
BOAT DE STRINGER PL.	1R	1R
" PLATE	"	"

M.V. "HOKUROKU MARU"
Nagasaki Report No. 1797.

MIDSHIP SECTION
SCALE 1/4 INCH TO 1 FOOT
(44.5' x 60' x 40' 9")
(FINISHED PLAN)

