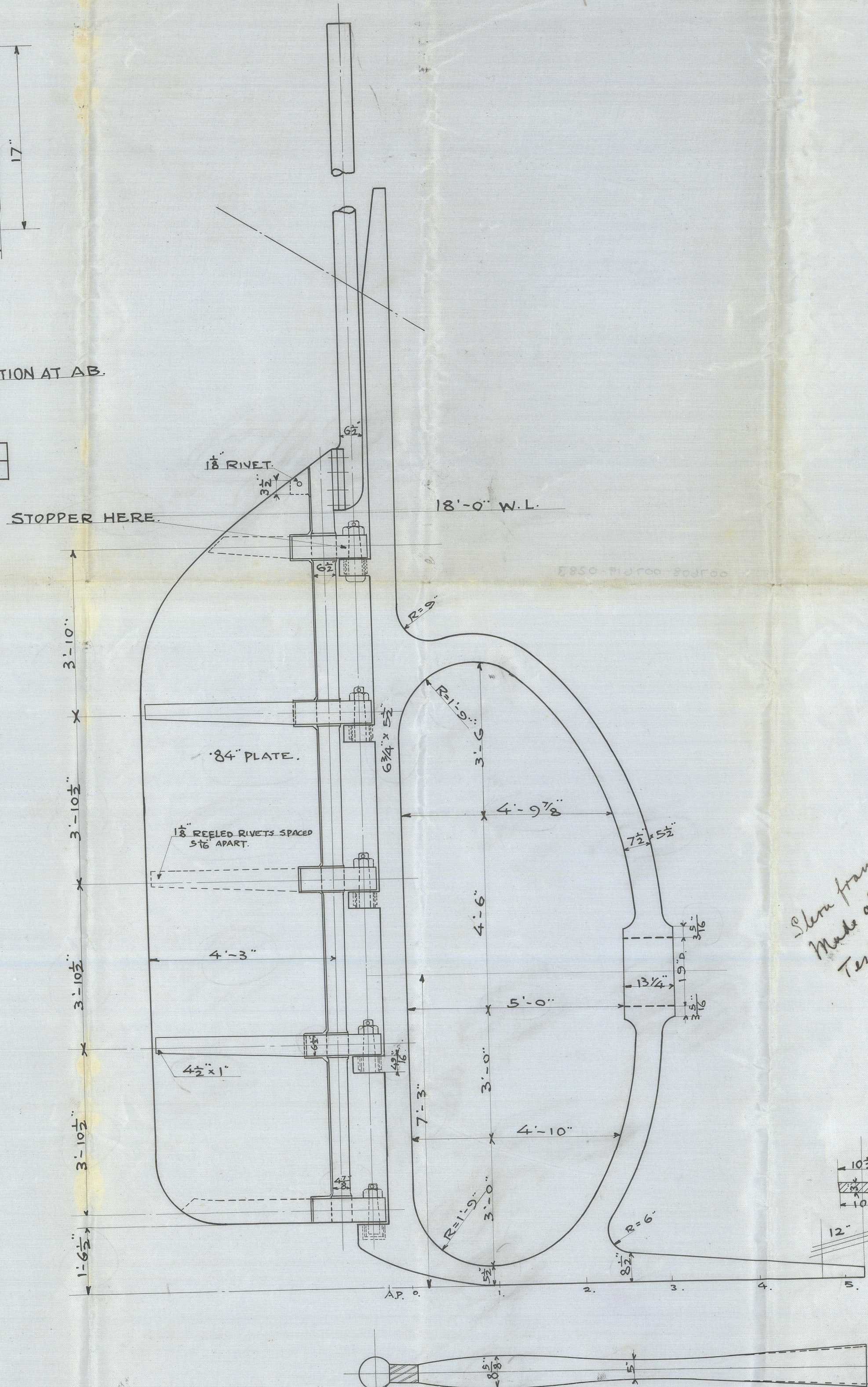
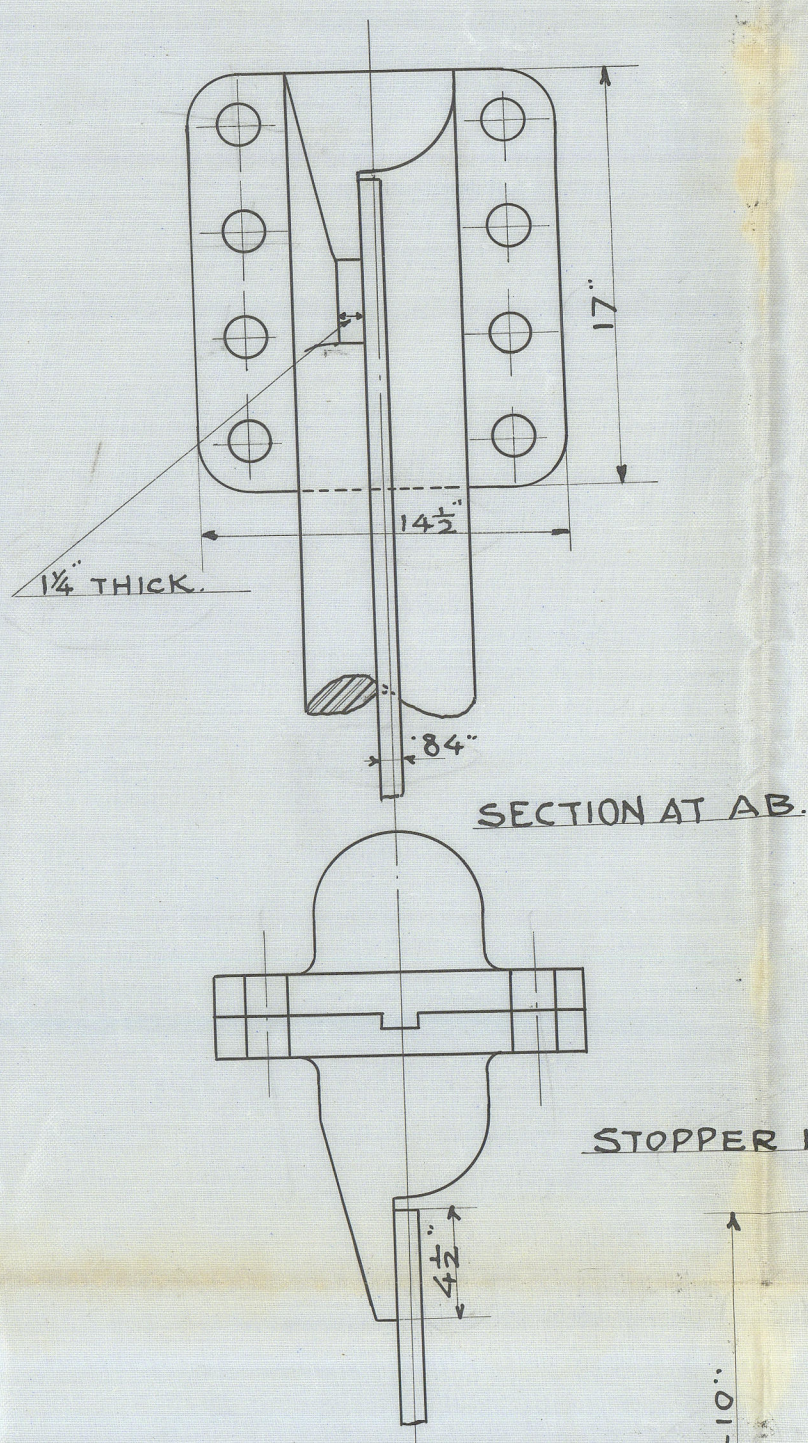
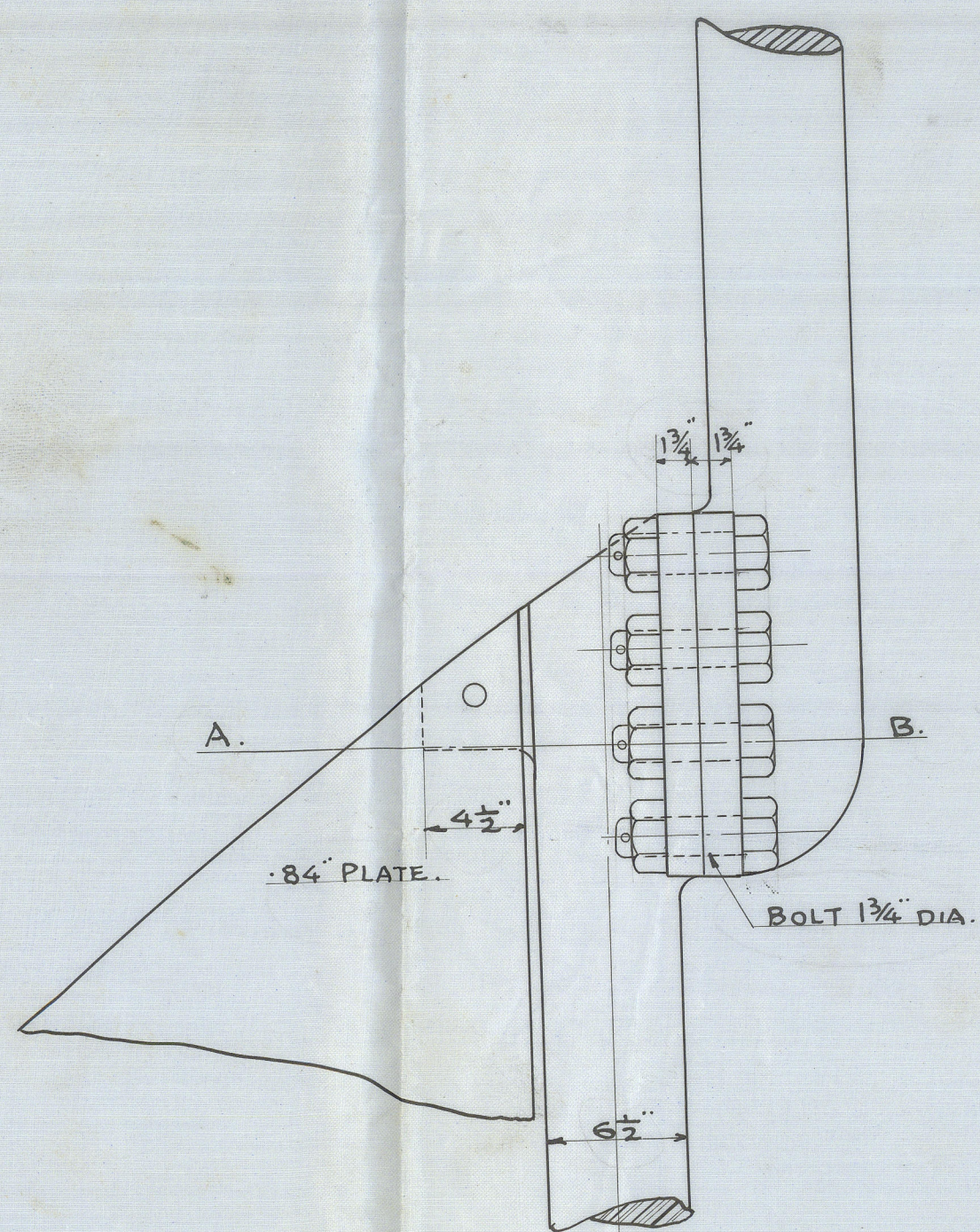


Nº 63. (D<sup>N</sup> Nº 499.  
NACASAKI.)

RUDDER & STERN FRAME. (ALTERATION PLAN.)

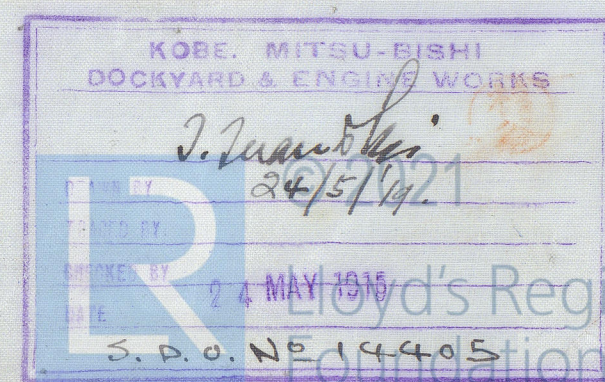
SCALE 1/2 INCH TO A FOOT.

SCALE  $1\frac{1}{2}"$  TO ONE FOOT.



Shore forms casting  
Made at Sacramento  
Tested 26" & 30" Aug 1915  
Mass. R. 24/8/16 AL-1

ju  
5.7.15



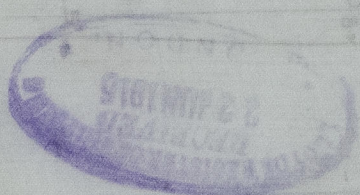


Melvin Burke. Kobe

No 63 (Design 409)  
Nagasaki

Rud. & Steam frame

Kobe let. 29.5.15



S.S. "Katsuma

Maru"

Kobe Rep No 1852



© 2021

Lloyd's Register  
Foundation