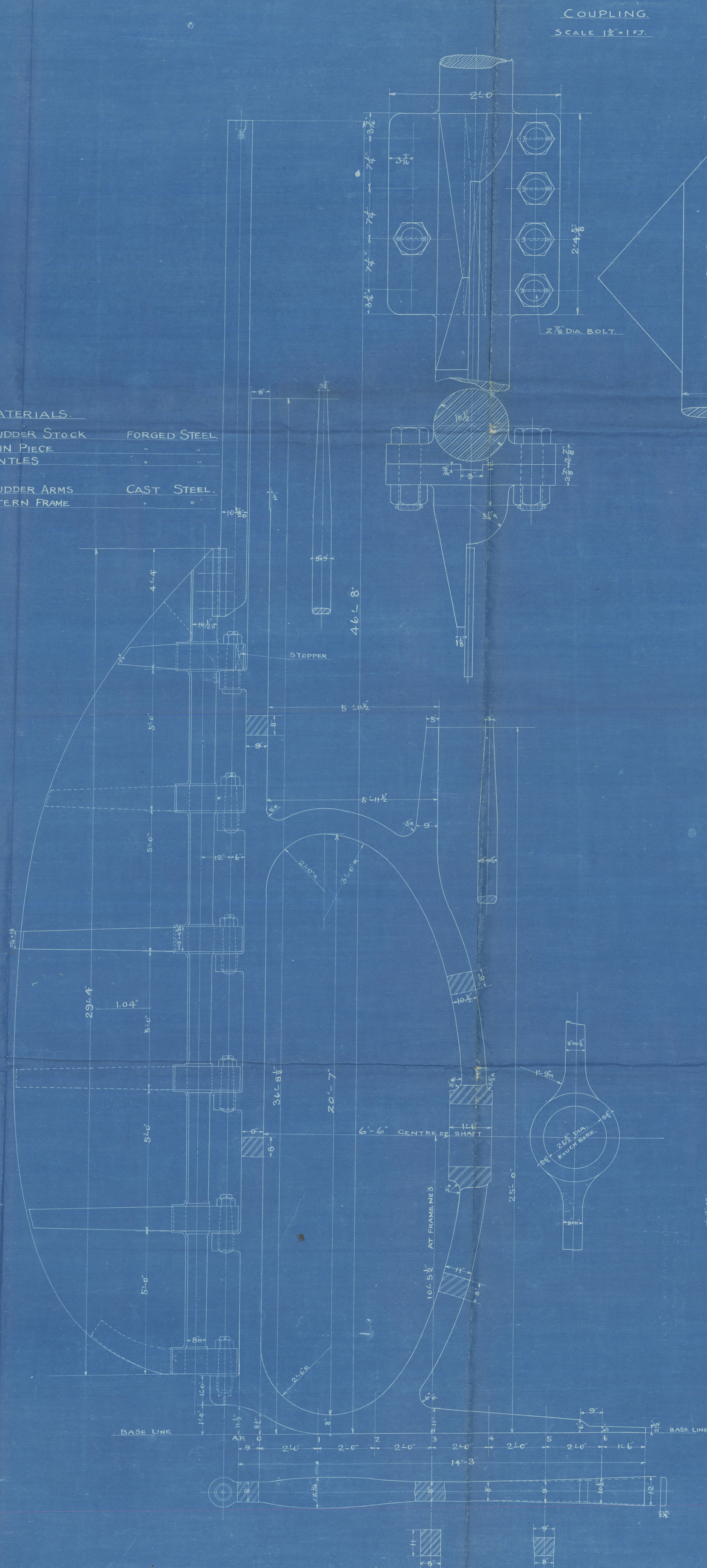


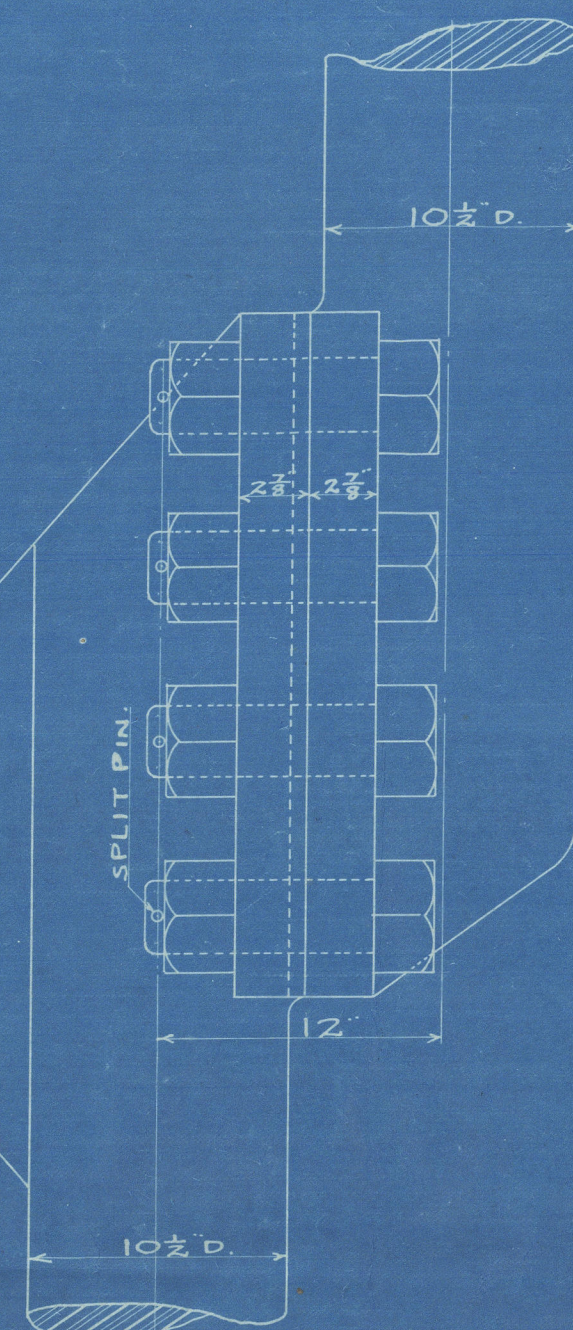
No. 1111.
STERN FRAME & RUDDER.
 SCALE $\frac{1}{2}$ " TO ONE FOOT.

MATERIALS.

RUDDER STOCK FORGED STEEL.
 MAIN PIECE " "
 PINTLES " "
 RUDDER ARMS CAST STEEL.
 STERN FRAME " "

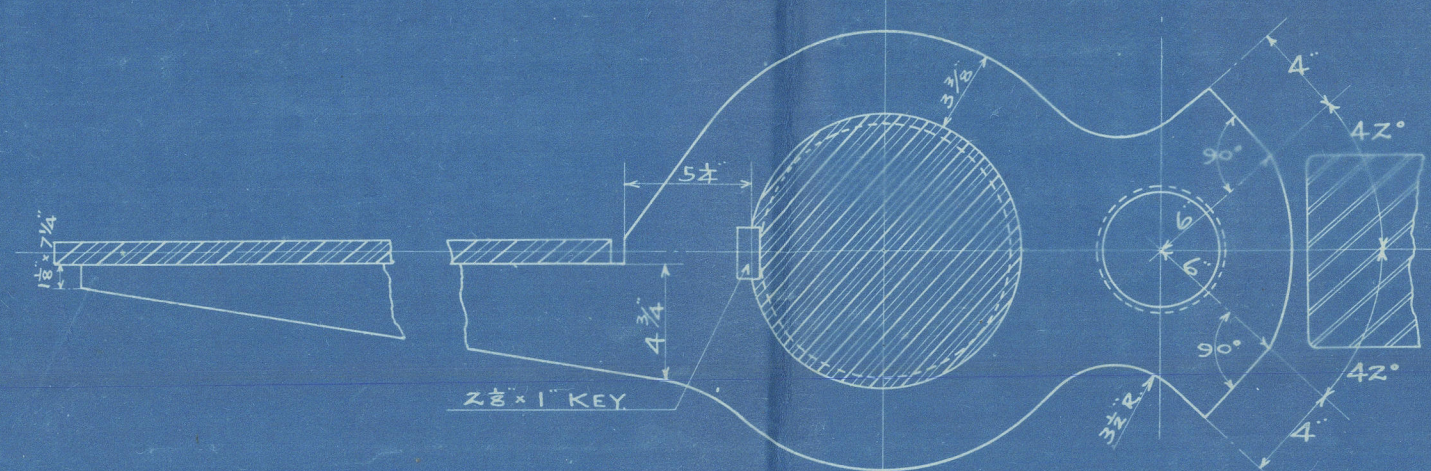
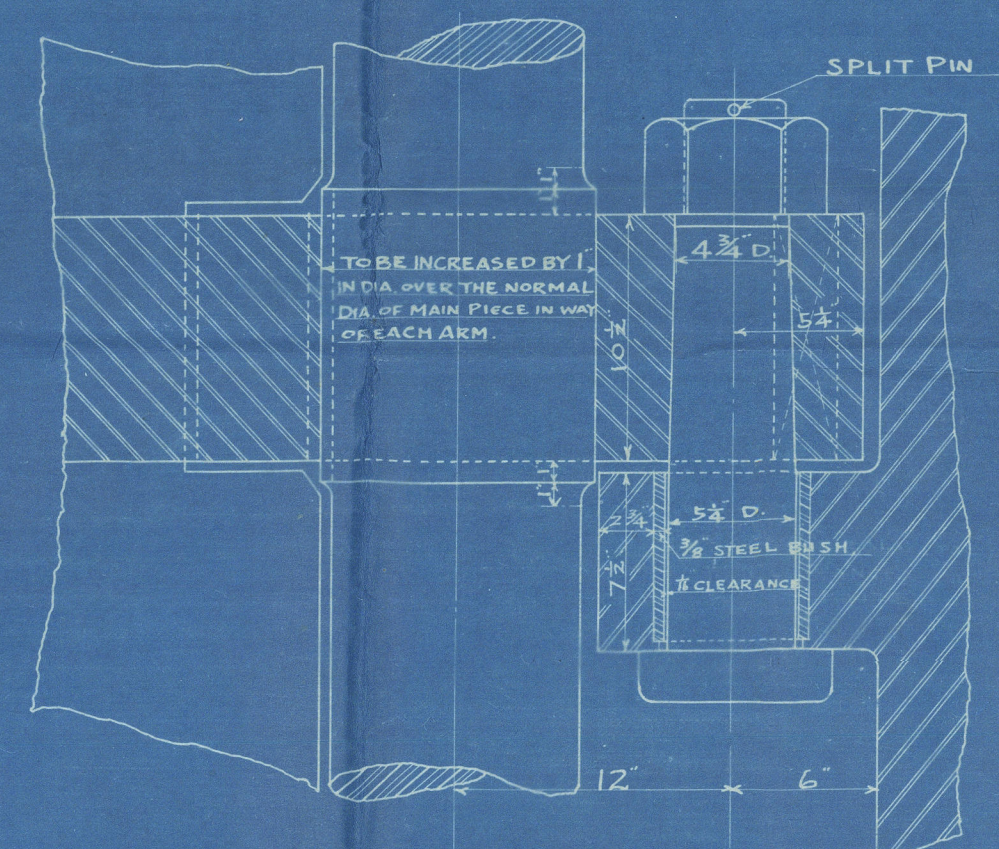


COUPLING.
 SCALE $\frac{1}{2}$ " = 1 FT.

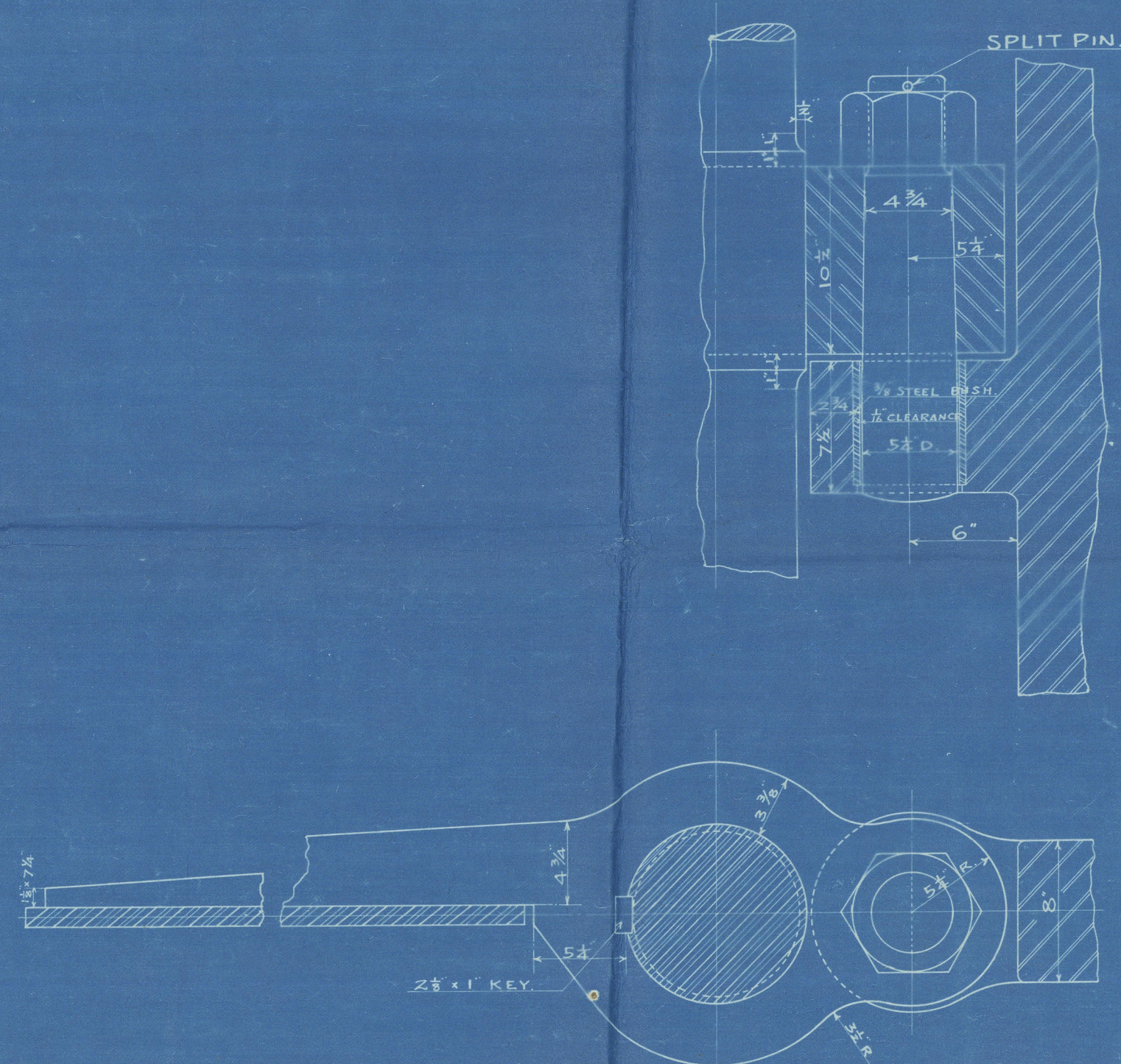


RUDDER AREA = 155.49 SQ. FT.
 C.G. OF RUDDER ABAFT C. OF PINTLE = 3.55 FT.
 $A \times D = 155.49 \times 3.55 = 551.98$
 SPEED NOT EXCEEDING 10 1/2 KNOTS.

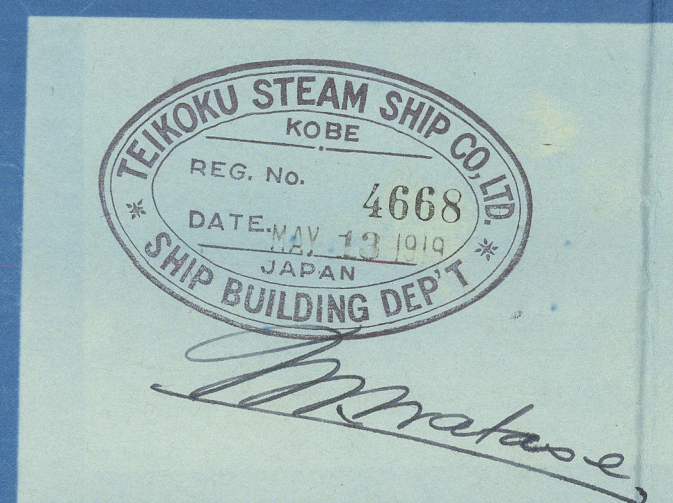
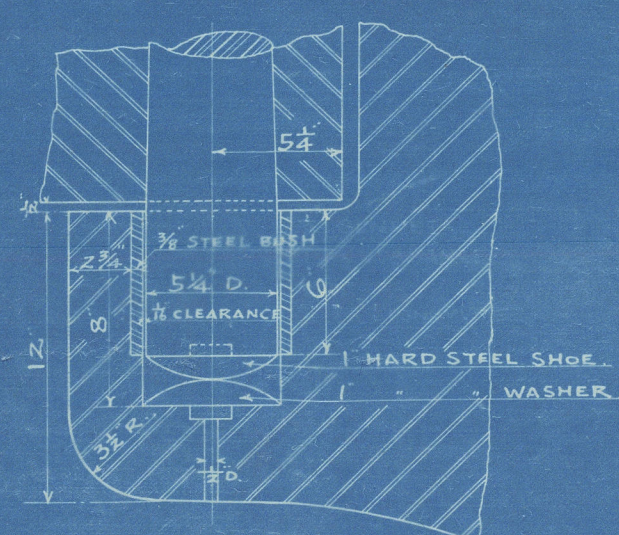
LOCKING PINTLE & STOPPER ARM.
 SCALE $\frac{1}{2}$ " = 1 FT.



PINTLE & ARM.



HEEL GUDGEON.



S. S. No 11.

"Yone Maru"

Harima Dockyard.

Steel Frame & Madder.

1/n "Tamakoko Maru".

Kob. 2418

007553-007562-0330



© 2020

Lloyd's Register
Foundation