

LENGTH B.	P. P	(L)	4 1/2' - 0"
BREADTH MOULDED		(B)	56" - 0"
DEPTH	"	(D)	3 1/2' - 9 1/2"
TWEEN DECK HEIGHT			8' - 0"
HEIGHT OF POOP, BRIDGE & FLECK DECK			7' - 9"
LENGTH OF BRIDGE			118' - 3"
" " POOP			33' - 9 1/2"
" " FLECK			39' - 2 1/2"

CLASSED:- + 100A1 AT LLOYD.

### SCANTLING NUMERALS :-

1 <sup>ST</sup>	LONGITUDINAL NUMERAL (L x D) = 13199.08
2 <sup>ND</sup>	" " " " L x (B + D) = 36439.08
PROPORTION	L/D TO UPPER DS = 13.05 L/D BRIDGE = 10.49
DEPTH OF FRAME	20' 3" 5" HALF EXCESS OF HEIGHT FOR TANK SIDE BRACKET.
	d = 19' 9" 3" IN WAY OF TANK RECESS
PERCENTAGE OF ELECTIONS	100 x $\frac{101.25}{215}$ = 46.05%

EQUIPMENT NUMBER .

L x (B + D)	415 x (56 + 31.805)	= 36,439.08
POOP	33.79 x 7.75 x $\frac{3}{4}$	= 196.41
BRIDGE	118.25 x " x "	= 687.55
FCE	39.21 x " x "	= 227.91
DECK HOUSE	(FORWARD)	24.75 x 8 x $\frac{1}{2}$ = 99.00
"	(AFT)	46.75 x " x " = 187.00
"	(ON NAV BRIDGE)	22 x " x " = 88.00
	<b>NUMERICAL</b>	<b>37,924.78</b>

## FORGING & CASTINGS :-

STEM.	10" x 2 5/8"	ROLLED	STEEL.
STERN POST	10 1/2" x 8 1/2"	CAST	STEEL.
RUDDER POST	9" x 8 1/2"	"	"
RUDDER	AS PER	RULE.	

## DOUBLE BOTTOM

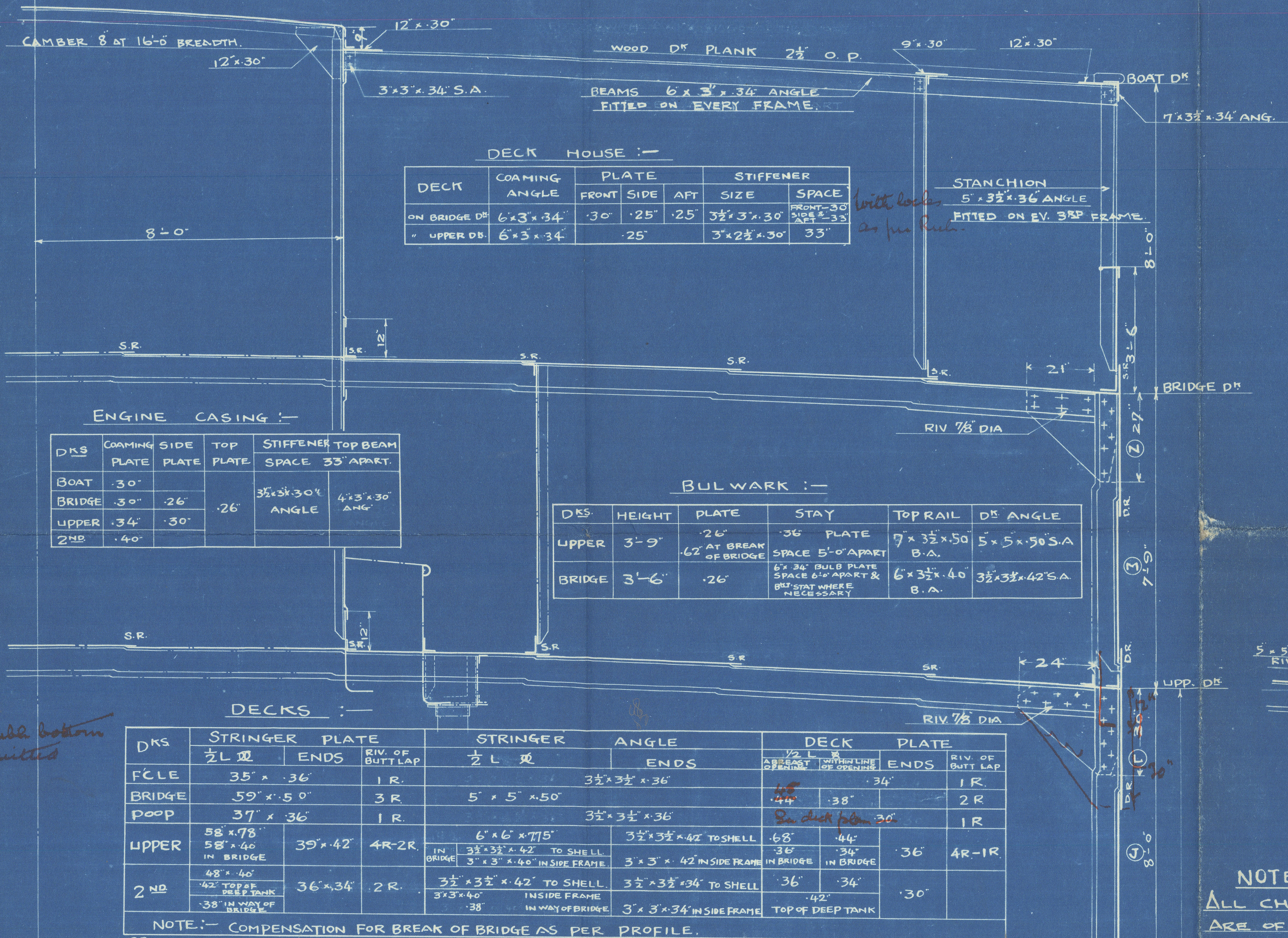
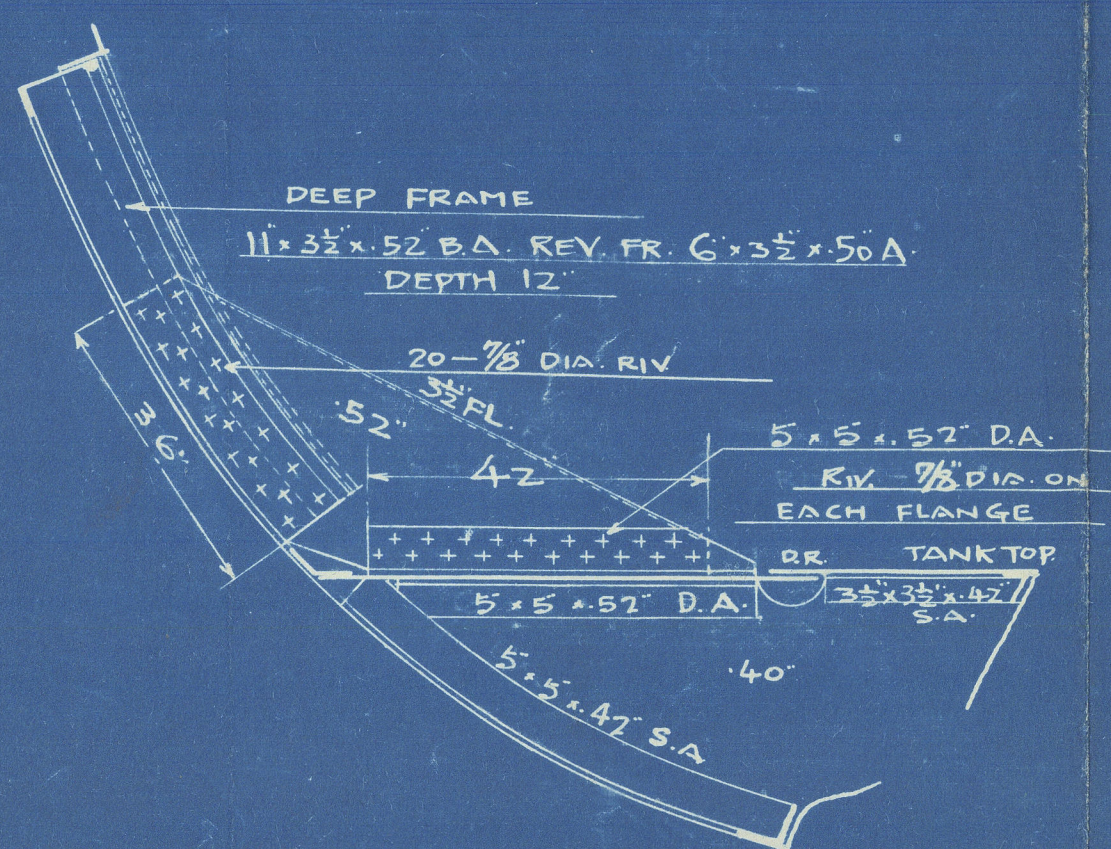
PLATES.					
DESCRIPTIONS.		$\frac{1}{2} L$ &	ENDS	ENG.	RIV OF BUTT LAP.
CENTER GIRDER PLATE		$44" \times .54"$	$.44"$	$.54"$	3 R
SIDE		$.44"$	$40 \frac{1}{2} \times 16 \frac{1}{2}$ END	$.50"$	
ADDITIONAL SIDE GIRDER IN ENGINE SPACE $\frac{3}{8} L$ &					
FORWARD AS PER PLAN.					
MARGIN	PLATE	$37" \times .54"$	$31 \frac{1}{2} \times 22 \frac{1}{2}$ AT ENDS	$.54"$	3 R
TANK TOP			$.42"$	$.52"$	3R-2R
PLATES	MIDDLE	$52" \times .50"$			
	OTHERS	$.44"$	$40" \times 16 \frac{1}{2}$ END 38" RACE 1"	$.52"$	2 R
SOLID FLOOR PLATE			$.48"$	$.50"$	
TANK END FLOOR PLATE		$.48"$	$.48"$	$.50"$	
TANKSIDE BRACKET PLATE		50" EXCEPT PORT & FORWARD WHERE $.48"$			
GUSSET PLATE		$.44"$ CONTINUOUS PLATE			

## ANGLES

DESCRIPTIONS	1/2 L. W.	ENDS	ENG SPACE
CENTER GIRDER			
TOP ANGLE	3 1/2" x 3 1/2" x 52" S.A.	3 1/2" x 3 1/2" x 48" S.A.	3 1/2" x 3 1/2" x 52" S.A.
BOTTOM "	4" x 4" x 58" S.A.	4" x 4" x 54" S.A.	4" x 4" x 58" S.A.
VERTICAL "	3 1/2" x 3 1/2" x 42" S.A.		5" x 5" x 56" S.A.
SIDE GIRDER	3 1/2" (FS) FL	3 1/2" x 3 1/2" x 42" S.A. 3 1/2" x 3 1/2" x 42" S.A.	5" x 5" x 56" S.A.
TOP		3 1/2" (FS) FL AT ATTEND.	
BOTTOM ANGLE	3 1/2" x 3 1/2" x 42" S.A.		
VERTICAL "	3" x 3" x 38" "		
O.T. OR W.T. FLOOR			
BOUNDARY ANGLE	3 1/2" x 3 1/2" x 50" "		
MARGIN ANGLE	3 1/2" x 3 1/2" x 52" "		
FRAME ANGLE	3 1/2" x 3 1/2" x 42" S.A. (INTERCOSTAL EXCEPT IN HEN ROOM WHERE CONTINUOUS)	3 1/2" x 3 1/2" x 42" S.A. (INTERCOSTAL EXCEPT IN HEN ROOM WHERE CONTINUOUS)	3 1/2" x 3 1/2" x 42" S.A. (INTERCOSTAL EXCEPT IN HEN ROOM WHERE CONTINUOUS)
REVERSE FRAME ANG.	3 1/2" x 3 1/2" x 42" S.A. (INTERCOSTAL)		3 1/2" x 3 1/2" x 42" S.A. (INTERCOSTAL)
MARGIN PLATE	3 1/2" x 3 1/2" x 42" S.A. EXCEPT IN WAY OF DEEP FRAME & WEB FRAME		
VERTICAL ANG. INSIDE & OUTSIDE TANK		WHERE	5" x 5" x 46" S.A.
FLOOR PL. SILL ANG.	3 1/2" x 3 1/2" x 42" S.A.		SILL AS PER FLOOR PLAN EXCEPT ON W.T. FLOOR, WHERE 30" APART.

### SHELL PLATES :-

DESCRIPTIONS	1/2 L. Ø.	ENDS	RIV. OF LAP BUTT OF
BRIDGE SIDE STRAKES (M) (N)	62"		3R
POOP	40" - 38"		1R
FILE	42"		1R
UPPER DE SHEER STRAKE (U)	51" x .92"	.46"	5R - 3R
IN BRIDGE (U)	.66"		
BELOW UPP DE SHEER STRAKE (U)	51" x .80"	.46"	4R - 3R
IN BRIDGE	.66"		3R
SIDE STRAKES (F) (G) (H)	.66"	.46"	3R
BOTTOM STRAKES (A) (B) (C) (D) (E)	.66"	.48"	4R
.66" - .62" THICK FOR (A) (B) (C) STRAKES ON FLAT OF FLOORS			
3/5 L. Ø. FORWARD			
BOSS PLATE		.72"	4R
CONNECTING PLATES TO STERN POST	51" x .83"	.62"	3R
FLAT PLATE KEEL PLATE	51" x 35 L. Ø. FORWARD	.72"	4R - 3R
NOTE:- COMPENSATION AT BREAKS OF BRIDGE			
AS PER PLAN			



NOTE :-  
ALL CHANNEL & BULB ANGLES  
ARE OF NEW BRITISH STANDARD  
ON 1924.

### BEAMS :-

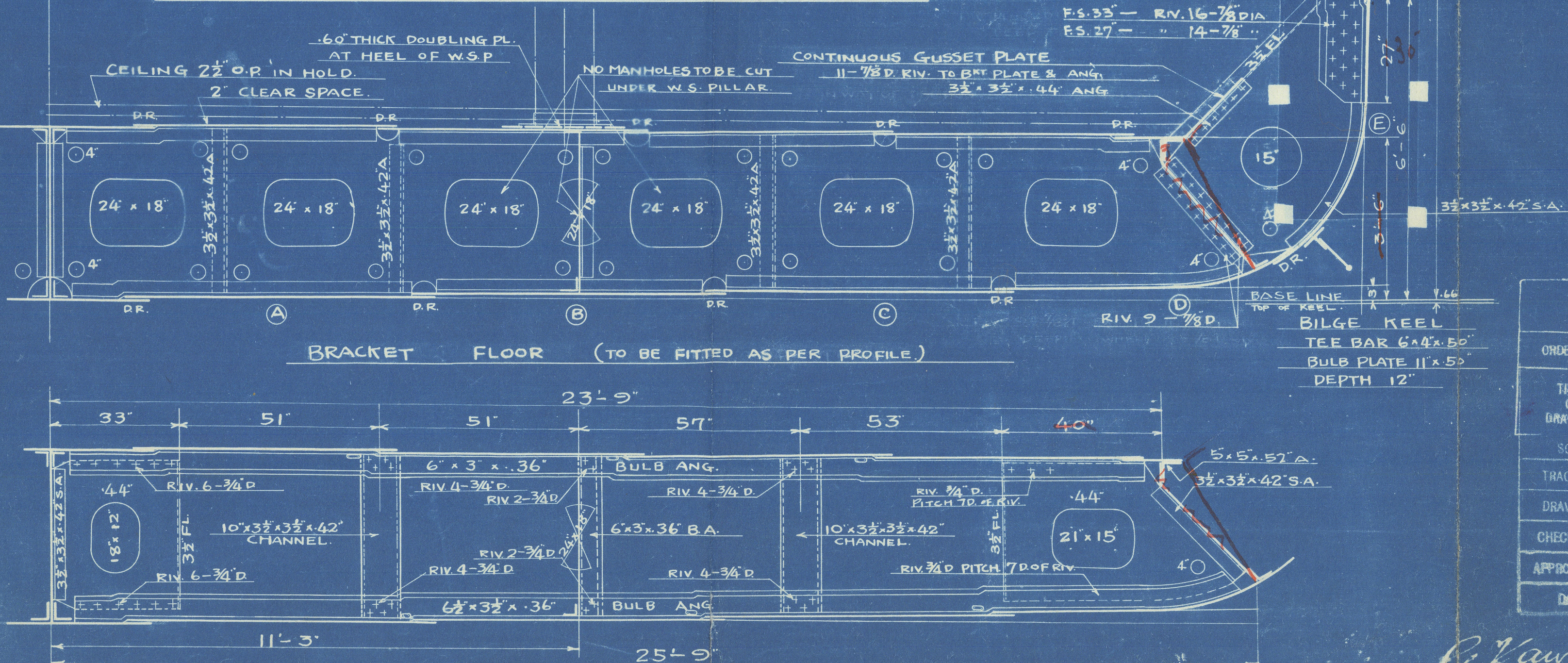
FRAME SPACE		33'		27'		REMARKS
DECK	SIZE	KNEE	SIZE	KNEE		
FLE		<i>2x8</i>	11' x 3½" x 44' BA	35' x 54'	FITTED ON ALT. FR.	
BRIDGE	9' x 3½" x 40' BA	27' x 48'			FITTED ON EV. FR.	
POOP	8' x 3' x 36'	24' x 40'				
CANOE TRIM IN	10' x 3½" x 40'	30' x 50'				
UPPER	OTHER	9' x 3½" x 42'	27' x 48'	8' x 3½" x 46' BA	24' x 48'	
2ND	DEEP TANK TOP	12' x 3½" x 48'	36' x 40' 3/8" FL	9' x 3½" x 38' BA	27' x 48'	
OTHER	10' x 3½" x 40'	30' x 40' 2½" FL				
N.B.: SCANTLINGS OF HALF BENT, PAINTING BENT, BEAMS AT END OF STRONG BEAMS IN THE SPACE AS PER PROFILE						

N.B:- SCANTLINGS OF HALF BEAM, PANTING BEAM, BEAMS AT ENDS & STRONG BEAMS IN ENG. SPACE AS PER PROFILE.

FRAME :-

SPACING	24" FOR PEAKS			
	27" . BEYOND 3/5L. DL TO COLL. BRG			
	33" . OTHERS.			
SCANTLING	FRAME SPACING	IN HOLD	TWEEN DR	INTERMEDIATE FRAM IN BULKHEADS
	IN TUNNEL RECESS	10'x3 1/2'x46" B.A.		IN POOP 6'x3 1/2'x38" A
	33" ABOVE " "	10'x3 1/2'x44" "	8'x3 1/2'x38" BA	LOWER END FREE
	IN DEEP TANK	12'x3 1/2'x48" "		
	OTHERS	12'x3 1/2'x46" "		IN BRIDGE 6'x3 1/2'x38" ANG
	DEEP FRAME	11'x3 1/2'x38" B.A. WITH (DECK) KEY FR. 6'x3 1/2'x50" ANG	12'x3 1/2'x36" BA	LOWER END FREE
	FWD 124-132	11'x3 1/2'x48" B.A.		
24"	IN F.P.T.	8'x3 1/2'x38" B.A.	8'x3 1/2'x38" BA	IN F.C.L. 6'x3 1/2'x38" ANG 15 LAMPED IN UP 55 BEAM KNEE PLAS
	IN A.P.T.			
EXTENSION OF TWEEN DR FRAME	IN WAY OF F.C.L.	F.C.L. & UPPER DR ALTERNATELY		
	" " " BRIDGE	BRIDGE & UPPER DR ALTSY. EXCEPT 4 FRAME SPAC AT BRIDGE ENDS WHERE TO BRIDGE DECK.		
	IN " OF POOP	POOP & UPPER DECK ALTERNATELY		
N.B.:	WEB FRAMES AS PER PROFILE.			

N.B:- WEB FRAMES AS PER PROFILE.



ASANO SHIPBUILDING CO. LTD.			
YOKOHAMA, JAPAN.			
ORDER NO.	S. NO 270	DESIGN NO.	100
TITLE	MIDSHIP SECTION		
DRAWING			
SCALE	1/2" TO 1'-0"		
TRACED BY		PLAN ISSUED FOR	
DRAWN BY		SENDING NO.	
CHECKED BY	<i>R. J. [Signature]</i>	DATE ISSUED	<i>Jan 28/54</i>
APPROVED BY		PLAN NO.	D2/E
DATE			

G. Kawahara  
Jan. 16<sup>th</sup> 1930



$$x \frac{3}{2} \times 425 \cdot A$$

ASAHO STEEL BUILDING CO. LTD.  
YOKOHAMA, JAPAN.

YOKOHAMA, JAPAN.

ORDER NO.

S. N. 270

DESIGN NOW

TITLE  
OF  
DRAWINGS

# MIDSHIP SECTION

SCALE

$\frac{1}{2}$ " TO 1'-0"

TRACED BY

PLAN ISSUED  
FOR

DRAWN BY

SENDING NO.

CHECKED BY

DATE ISSUED \_\_\_\_\_

APPROVED BY

PLAN NO.

DATE \_\_\_\_\_

PLAN NO. DZ/

"Soyuz Mann"

© 2020

Lloyd's Register  
562-0208  
Foundation

007553-007562-0208

Curadana.  
Jan. 16<sup>th</sup> 1930