

# "OTTAWA MAYTHORN"

## MIDSHIP SECTION

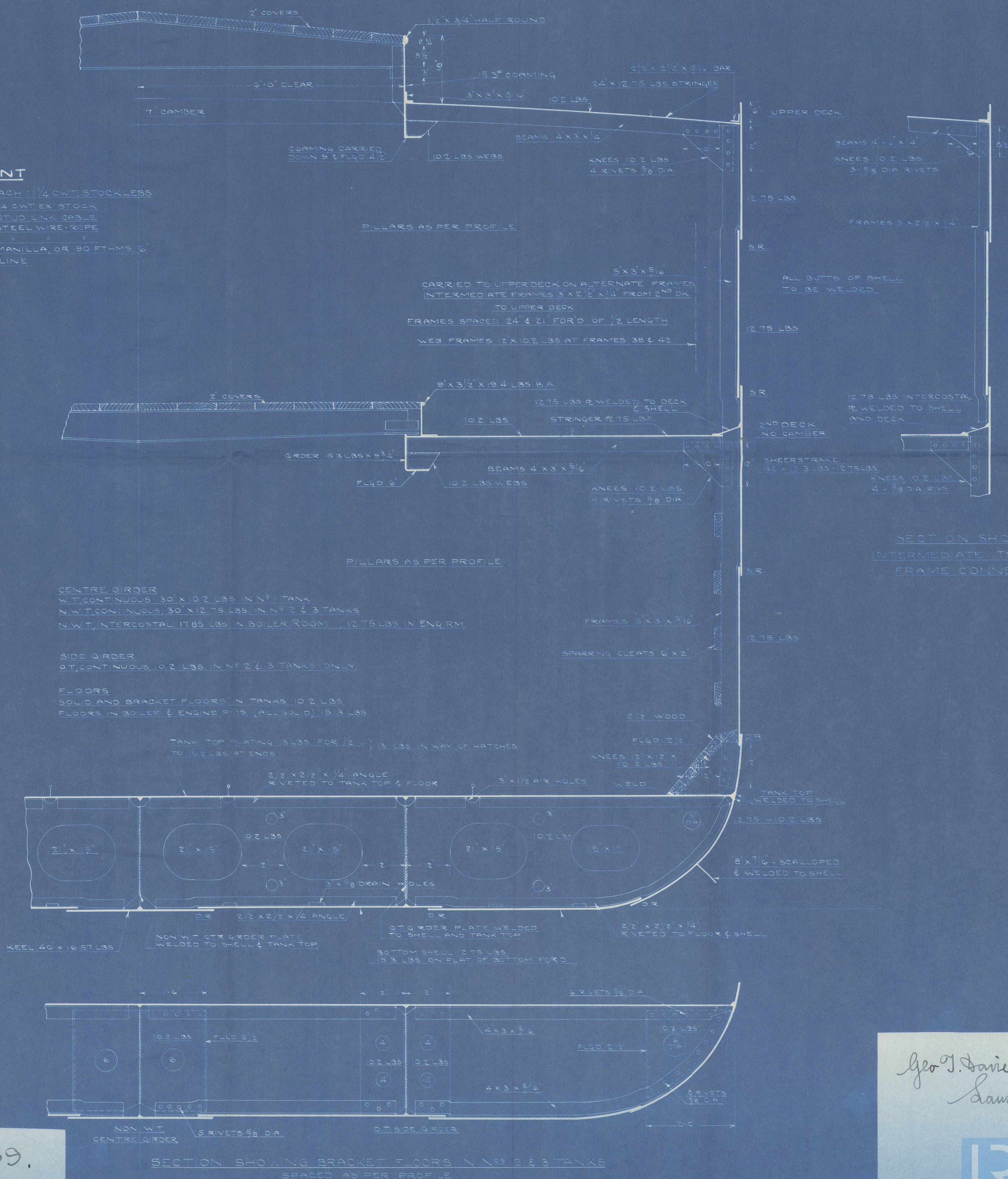
LENGTH B.P. 140'-0"  
BREADTH MLD. 27'-0"  
DEPTH MLD TO 2ND DK 10'-6"  
DEPTH MLD TO UPPER DK 17'-6"

SCALE 3/4"=1'-0"

CLASS  
LLOYD'S 100 A-1  
WITH FREEBOARD "PART WELDED"  
BRITISH CORPORATION B.S. \*  
WITH FREEBOARD "PART WELDED"

### EQUIPMENT

2 BOWER ANCHORS EACH 1 1/4 CWT STOCKLESS  
1 STREAM ANCHOR 4 1/4 CWT EX STOCK  
165 FATHOMS 2 1/2" STUD LINK CABLE  
1-75 " 2 3/4" STEEL WIRE ROPE  
1-60 " 2 3/4" " " "  
1-120 " 4 1/2" MANILLA OR 90 FTMS 6"  
1 COIL 1 1/2" HEAVING LINE



YARD NO 39.

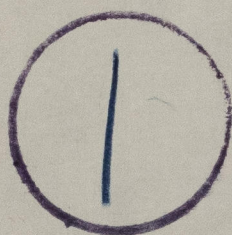
Geo. J. Davis & Sons Ltd.  
Lanigon P.Q.



# MIDSHIP SECTION

HULL NO 39.

"OTTAWA MAYTHORN"\*



Incl. Rpt. 7018

---



© 2020

Lloyd's Register  
Foundation

007553-007562-0170