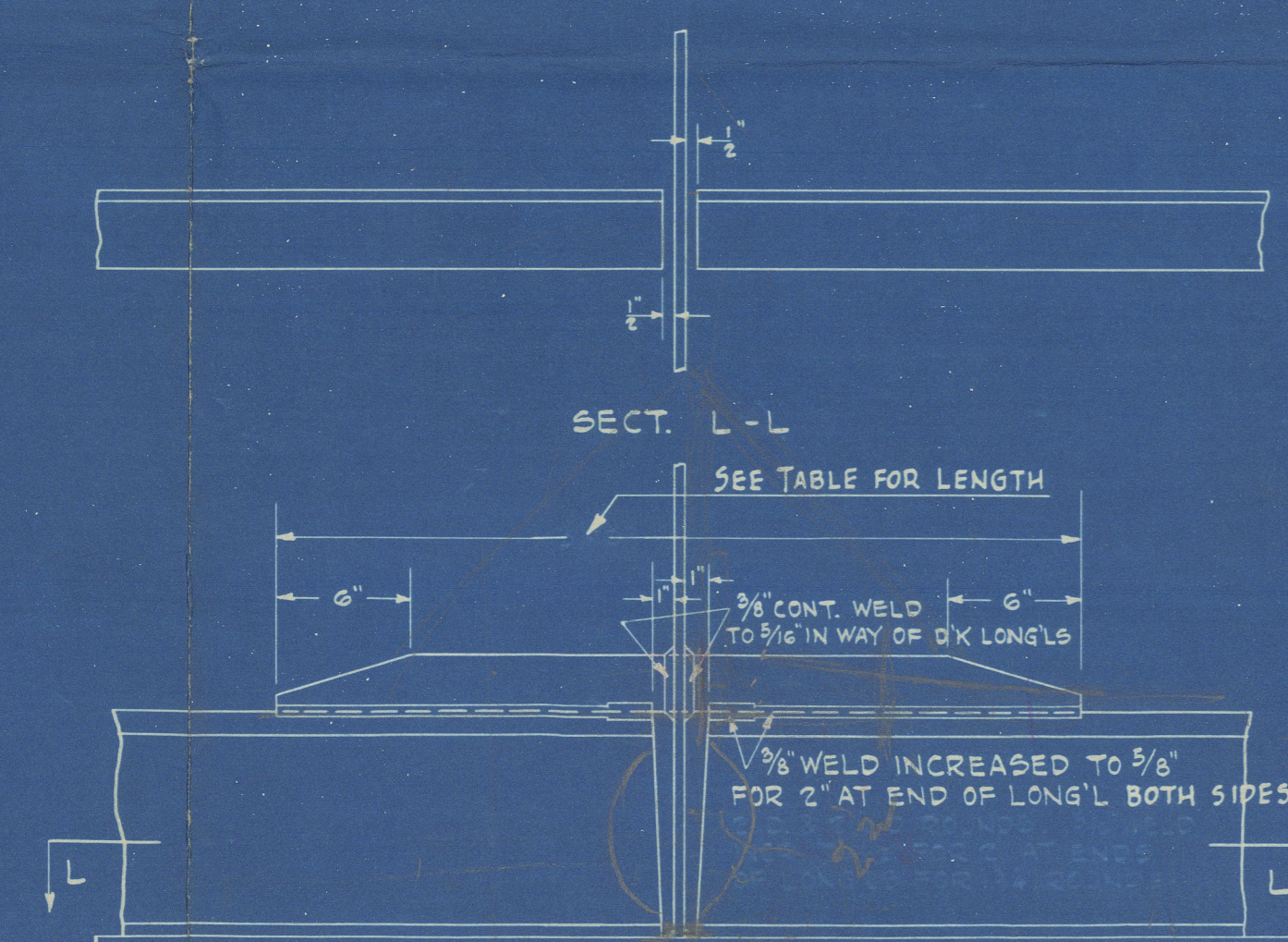
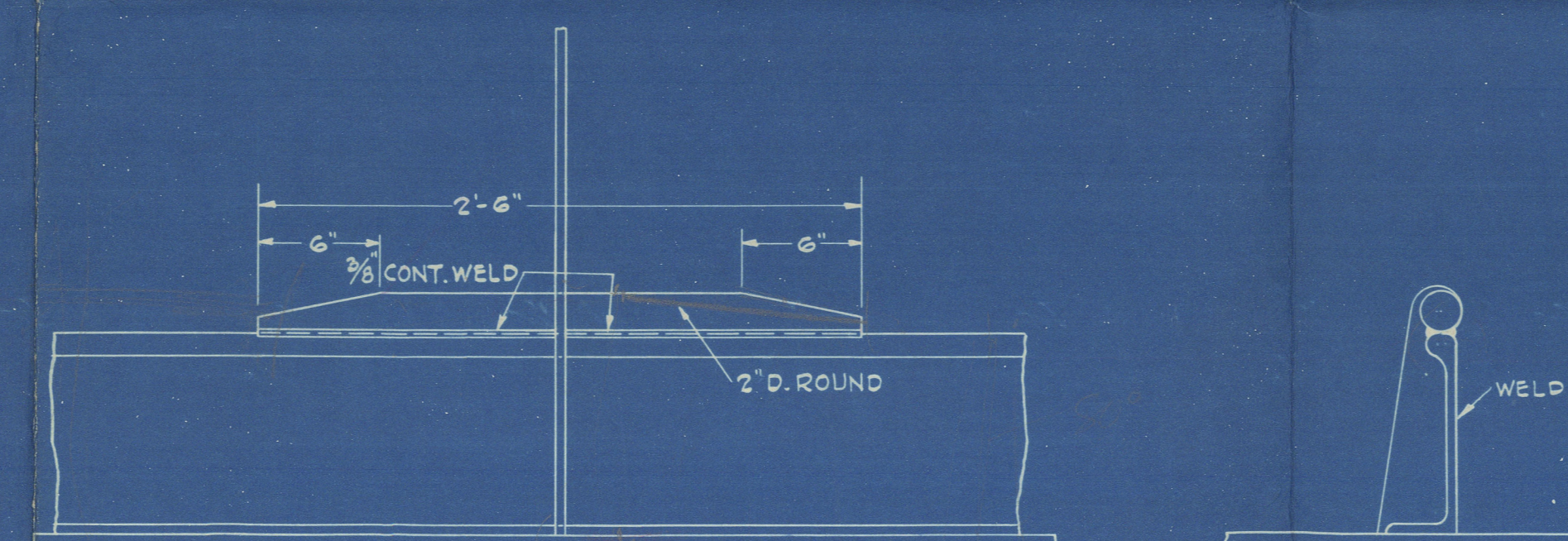


LOCATION OF ROUND BARS ON LONG'S IN WAY OF BHDS & TRANS.			
DEPTH OF LONG'S	LOCATION	DIA. & LENGTH OF ROUND AT BHDS	DIA. OF ROUND AT TRANS. 20' L.
6"	BECK	1 1/2" DIA. x 22" L.	—
7"	SIDE #1	" " " "	—
8"	#2, 3 & 4	" " x 24" L.	—
9"	#6, 7 & 8	2" DIA. x 26" L.	—
9"	#9	" " x 30" L.	—
10"	#10 & 11	" " x 30" L.	—
10"	#12	2 1/4" DIA. x 30" L.	2" D.
10"	#13	" " x 33" L.	—
10"	#14, 15, 16 & 17	2 1/2" " " "	2" D.
10"	#18	" " " "	—
10"	#20	" " " "	—
10"	#21, 22 & 23	" " " "	2" D.
10"	#24	" " " "	—

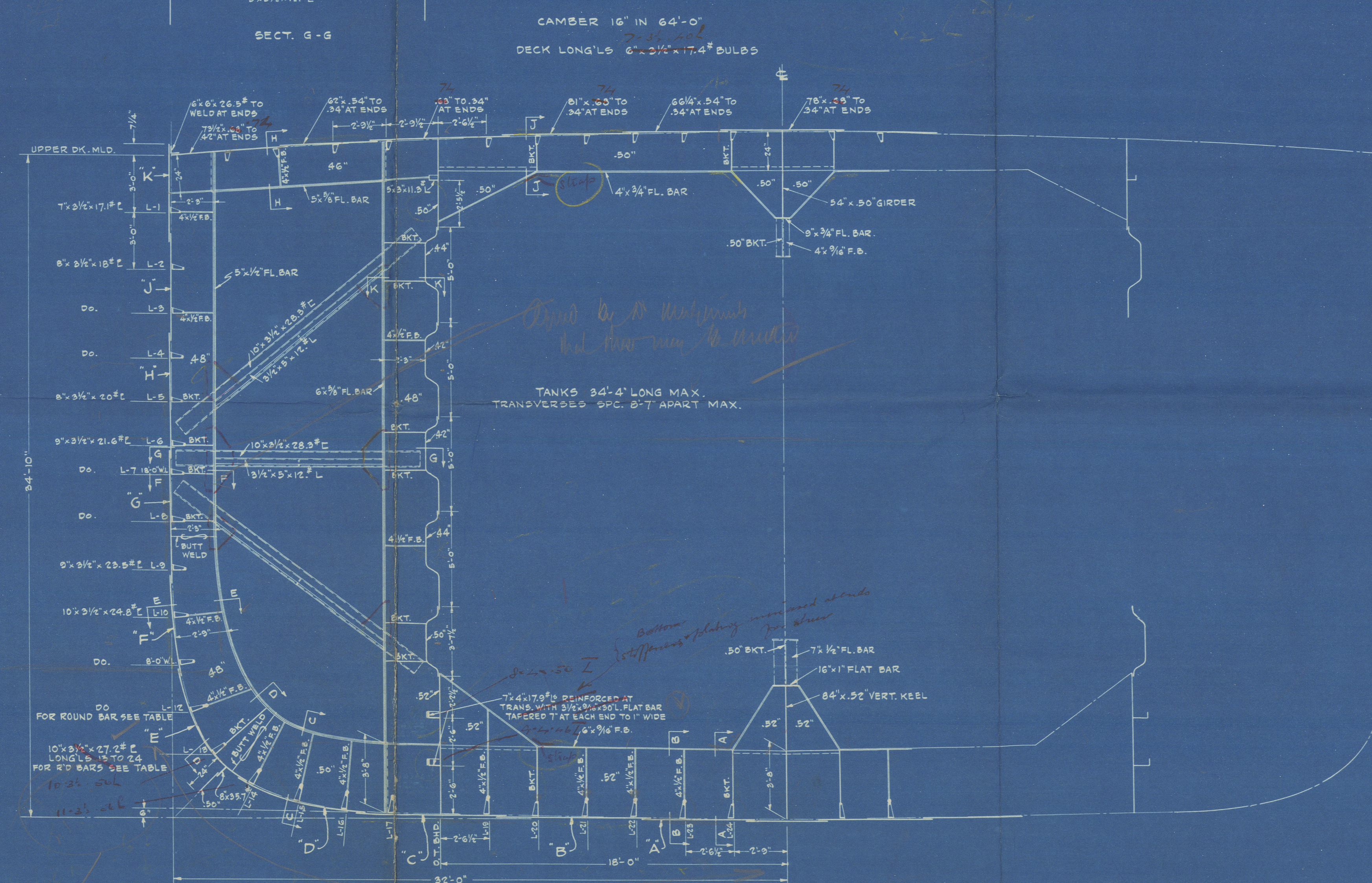


DETAIL OF ROUND BARS AT LONG'S IN WAY OF BHDS. FOR LOCATION SEE TABLE
SCALE 1/4" = 1'-0"

Local Drawings in Bulkhead Plan



DETAIL OF ROUND BAR AT BOTTOM LONG'S IN WAY OF TRANS. FOR LOCATION SEE TABLE
SCALE 1/4" = 1'-0"



EQUIPMENT		
2 BOWER ANCHORS STOCKLESS	10045 LBS. EACH	
1 " ANCHOR	SPARE 8540 "	
1 STREAM "	3605 "	
CABLE STUD CHAIN (C.O.R.S.) 2 1/2" D.	300 FATHOMS	
STREAM WIRE ROPE 6-24 1 1/2" D.	105 "	
TOWLINE " " 1 1/2" D.	130 "	
HAWSERS MANILA 2 " 8 1/2" CIRC.	90 FATH. EACH	
WARPS " " 2 " 7 1/4" "	90 " "	

PRINCIPAL DIMENSIONS	
LENGTH B.P.	442'-6"
BEAM MLD.	64'-0"
DEPTH "	24'-10"
DRAFT " (DESIGNED)	ABT. 28'-4"

4307	
4306	
HULL NO.	NAME OF VESSEL
BETHLEHEM SHIPBUILDING CORP. LTD. FORE RIVER PLANT QUINCY, MASS. DESIGN DEPT.	
13000 TON TANKER MIDSHIP SECTION	
SCALE 1/8" = 1'-0"	DATE OCT. 10/36
DRAWN R.M.P.	APPROVED J.H. Hunter
CHECKED X.W.	APPROVED
IN CHARGE J.H.R.	
Job No.	PLAN No. P-1140-AH

Elso Baton Rouge
[Signature]
FLR 6532

Wreck Section 58
PLANS TRANSFERRED TO SISTER VESSEL

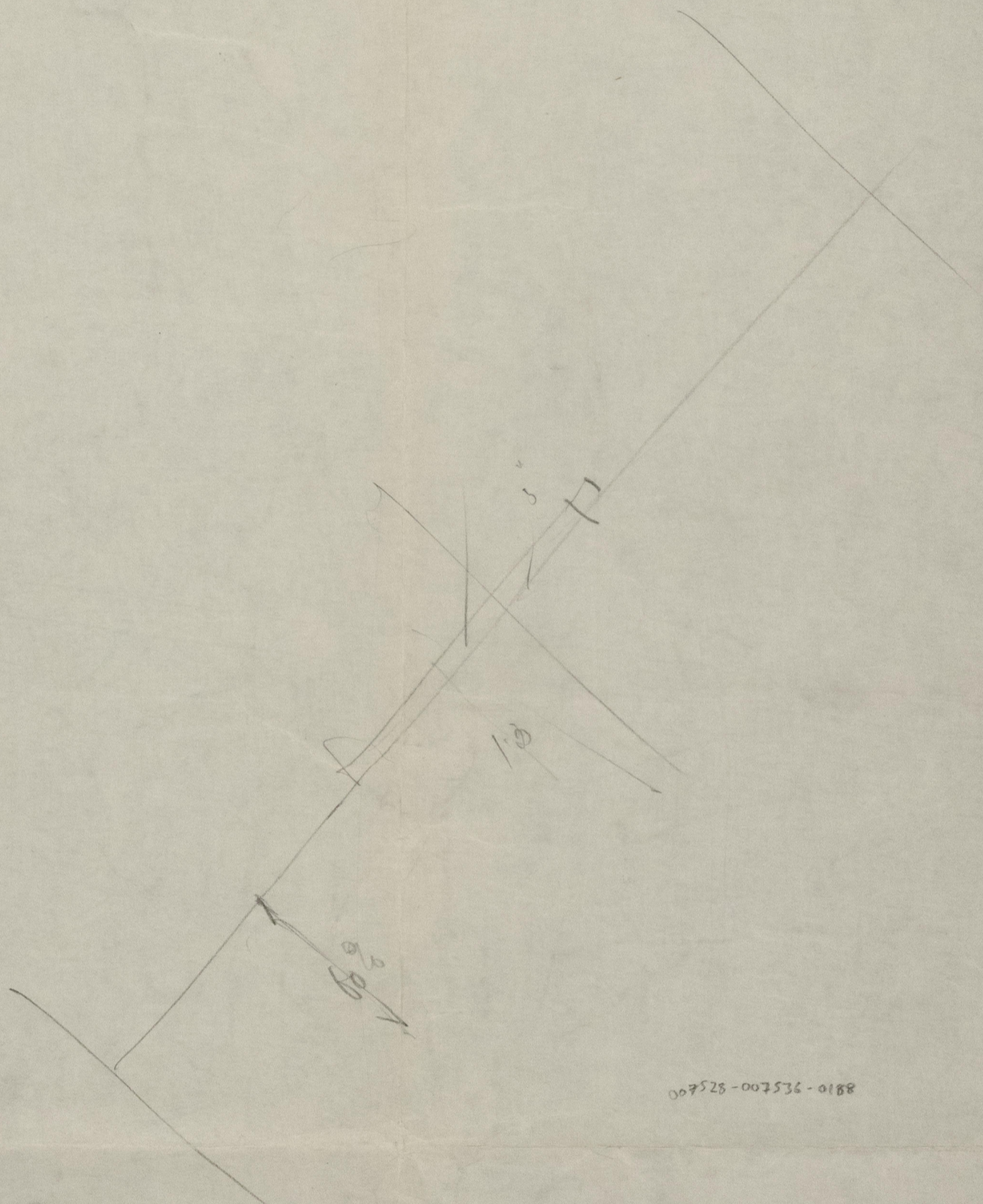
Esso Baton Rouge



© 2021

Lloyd's Register
Foundation

007528-007536-0188



8810-935400-825400