

5.9.10
14.9.10
21.9.10
7.10.10
17.10.10
20.10.10
2.11.10
18.5.11

MIDSHIP SECTION

S. S. N° 225

SCALE: 1/2" = 1'-0"

DIM: 272'-0" x 41'-0" x 19'-0" M.P.

TO CLASS 100 A.I. LLOYDS.

3.41.0	5.19.916
60.916	272
19.83	1218.32
60.83	426.12
272	1218.32
121.66	16569.152
425.81	4.696
121.66	
16545.76	

16.83

D. 10.04 IN WAY OF BRIDGE.
13.71 CLEAR OF BRIDGE.

EQUIPMENT

POOP	22'-0" x 7'-25" x .75	= 119.62
BRIDGE	18'-0" x 7'-25" x .75	= 424.12
FOCLE	26'-0" x 7'-25" x .75	= 141.37
DECKHOUSE	20'-0" x 7'-25" x .5	= 72.50
SIDEHOUSS	37'-0" x 7'-25" x .5	= 134.12
CASING	9'-0" x 7'-25" x .5	= 24.73
		16545.76
		17466.61
		17410

2 BOWSE ENDS .35% CNG. STOCKLESS

1 STEAM 30 EX. STOCK

1 TROGE 4 3/4

240 FATHOMS 1 1/2 STUD LINK CHAIN

75 1 1/2 STEAM CHAIN OR 4" STEEL WIRE

90 11 HEMP OR 3 1/2" STEEL WIRE

90 6" HANSE 2 OFF EACH

90 5" WARP

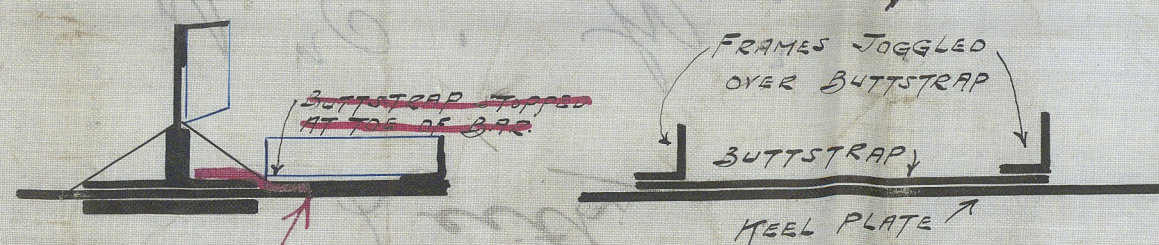
THIS KIND OF STRINGER FITTED

SKETCH OF STRINGERS IF REQUIRED.

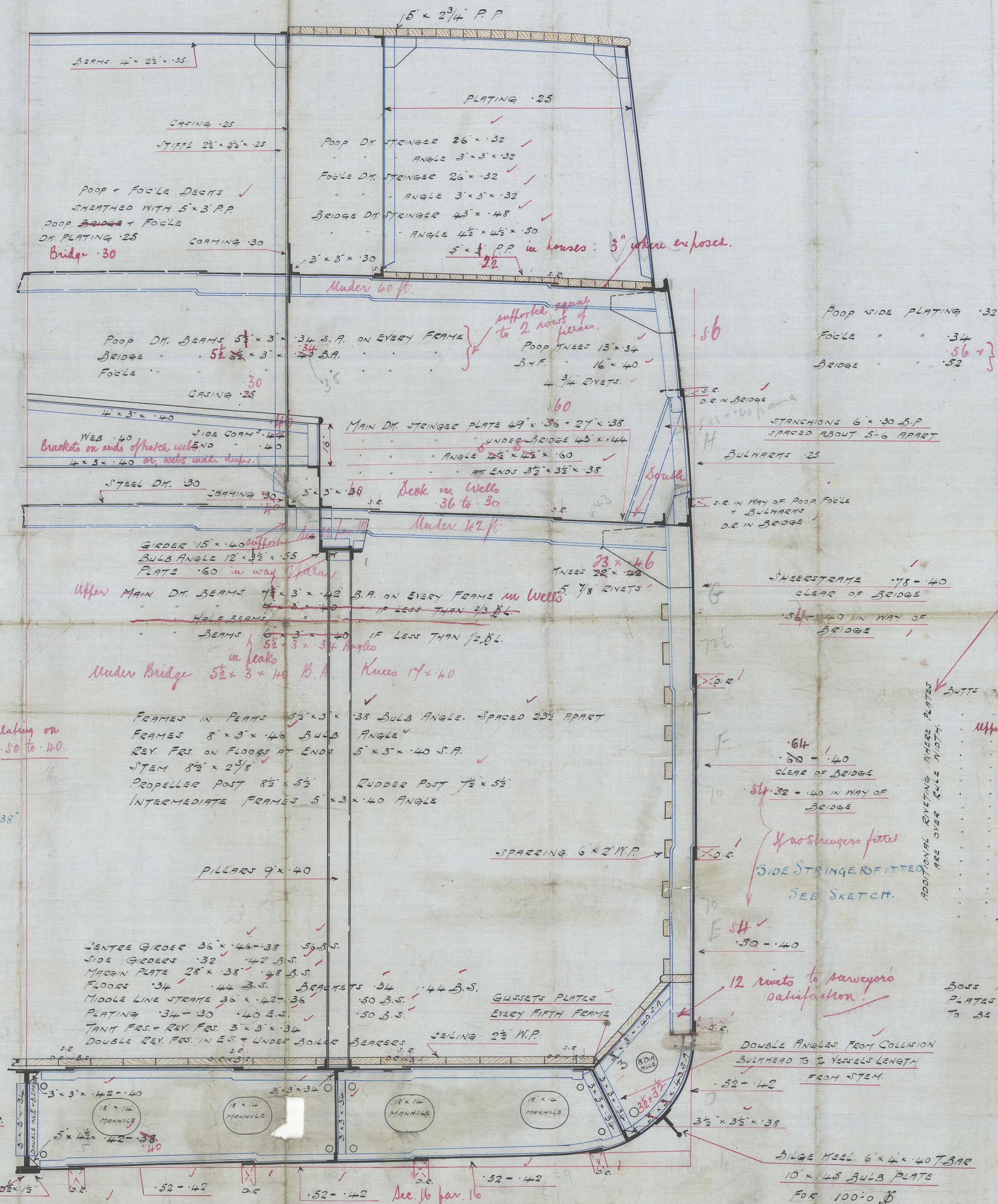
SIDE STRINGERS 6" x 3 1/2" x 42
INTER: 38
SHELL ANGLE 3" x 3" x 38

6" x 3 1/2" x 42
6" x 3 1/2" x 38

HEEL PLATES BUTT STRAPPED.
STRAPS FITTED ONE FRAME
SPACE IN LENGTH



Shap. forged over
Red bars



RIVETING

- BUTTS OF SHEETSTEAM & RIVETED PLATES TO BE AT ENDS IN WAY OF BRIDGE
- STEAM BELLY PLATES
- UPPER MAIN DECK STRINGER PLATE TO BE AT ENDS IN WAY OF BRIDGE
- HEEL PLATE D.E. DEC. T.C. AT ENDS IN WAY OF BRIDGE
- OUTSIDE PLATING T.C. SEE ABOVE
- MARGIN PLATE D.E. FROM BOWSE SPACE
- MIDDLE LINE STEAM T.C.
- MAIN DECK PLATING D.E. FOR 1/2 L.S. AT ENDS
- INNER BOTTOM PLATING D.E. FOR 1/2 L.S. AT ENDS
- CENTRE GIRDER T.C.
- BRIDGE DECK STRINGER T.C.
- POOP & FOCL DECK PLATING D.E.
- POOP & FOCL SIDE PLATING D.E.
- BRIDGE SIDE PLATING D.E. INBETWEEN
- BULWARTS T.C.

PLATING

- BOSS PLATES .35
- PLATES CONNECTED TO STEEL FRAMES TO BE OF MIDSHIP THICKNESS

SKETCH OF ADDITIONAL RIVETING IN QUADRUPLE BUTT LAP.

UNDER BOILERS THE TANK TOP FLOOR PLATES, INTERCOSTALS, REVERSE BARS, INTERCOSTAL ANGLES, CENTRE GIRDER PLATE & TOP ANGLES TO BE INCREASED 10 ABOVE SOCIETY'S RULES.

C-7
59.10

007506 .007517 .0366

01/06/56

Ramage & Ferguson
S. S. N° 225

Midship Section

Leith

M^r Sean Mann