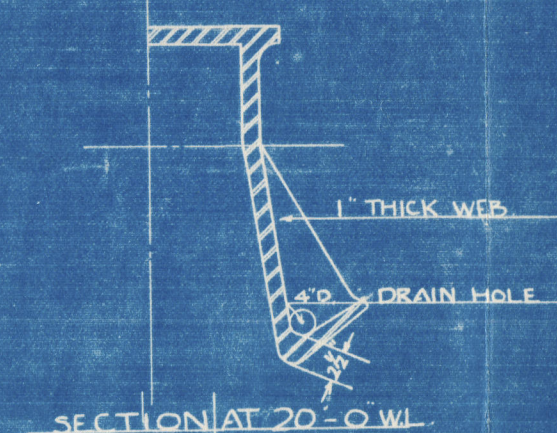
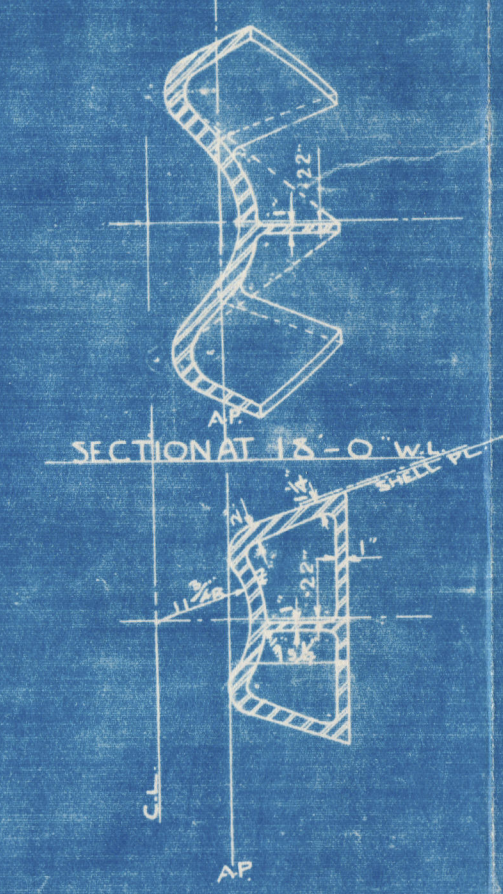


SECTION AT X-Y



SECTION AT 20'-0\"/>



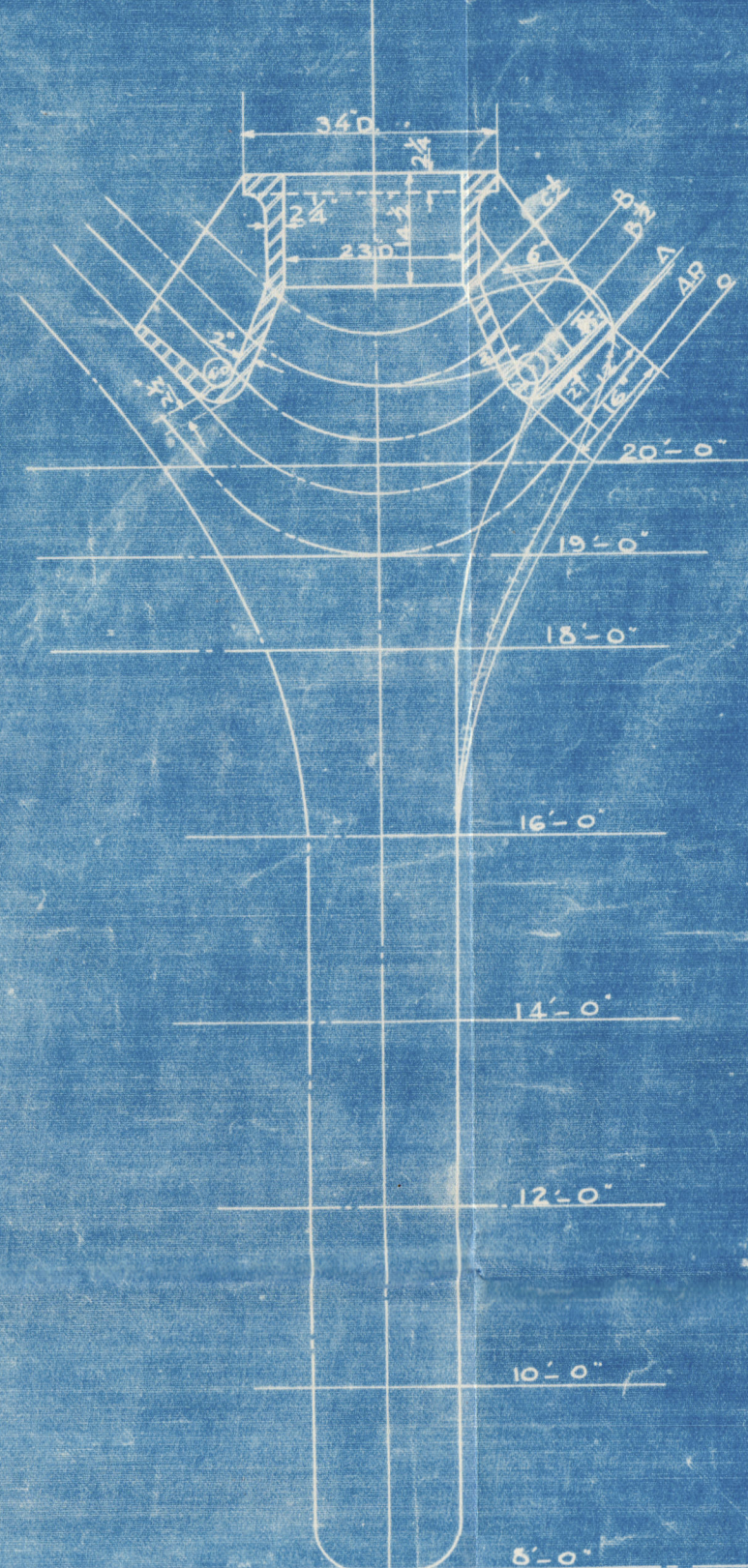
SECTION AT 18'-0\"/>

MATERIAL - CAST STEEL

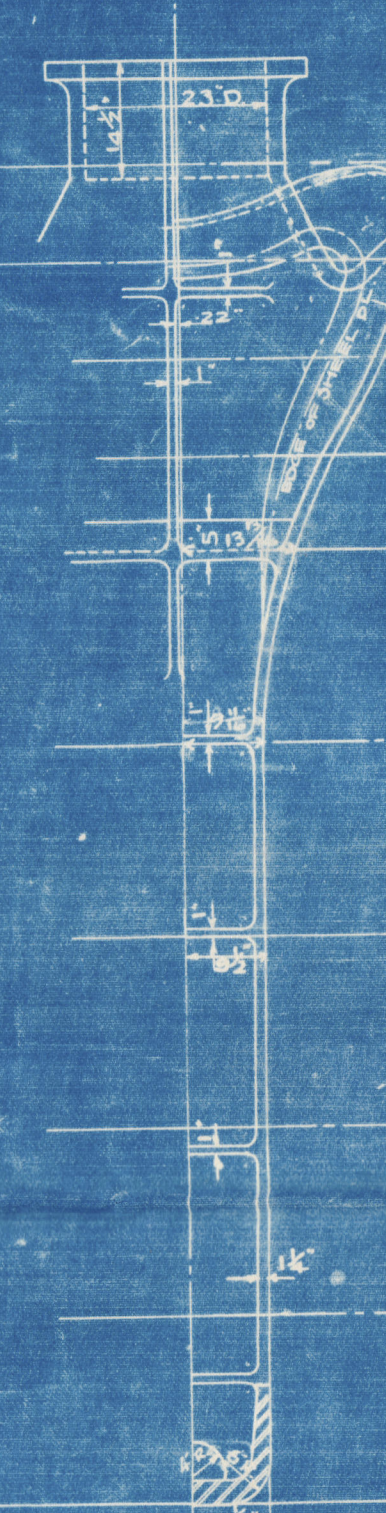
WEIGHT - STERN FRAME 6,320 K. TONS.
" CUT-UP 2,190 K. TONS.

RIVETING NOTE -		DIA OF RIV.	MAX. PITCH
CASTING -	STEEL PL. (END)	1 1/2"	5 D.
"	" (EDGE)	1 1/2"	5 D.
"	FLOOR PL.	1"	5 D.
"	CENTRE GIR. PL.	1"	5 D.

SECTION AT F.NO. 1
LOOKING AFTWARD



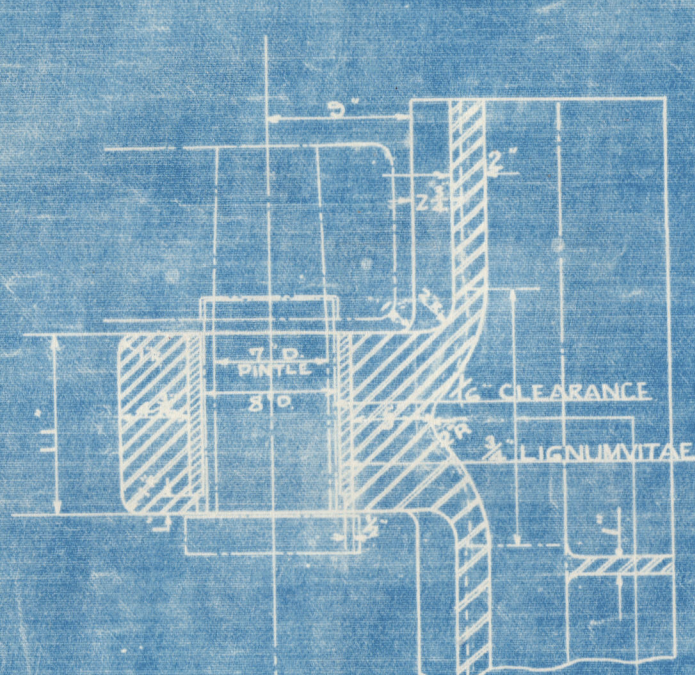
LOOKING AFTWARD



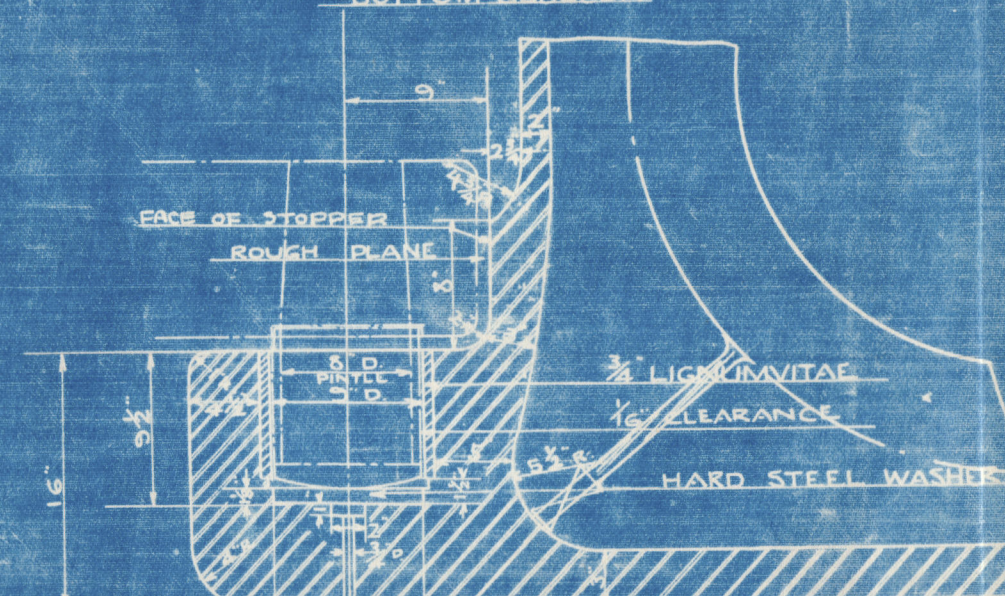
DETAILS OF GUDGEONS
SCALE 1 TO 15'

SCALE 1 TO 15'

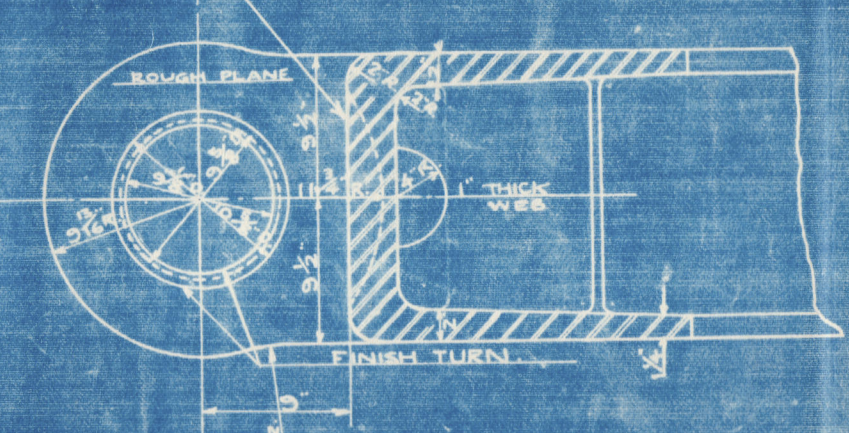
UPPER GUDGEON
SCALE 1 TO 15'



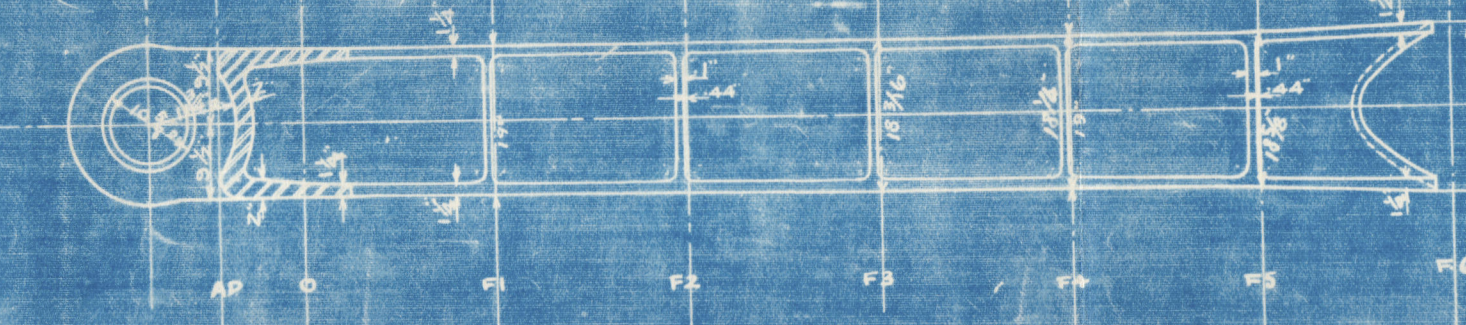
BOTTOM GUDGEON



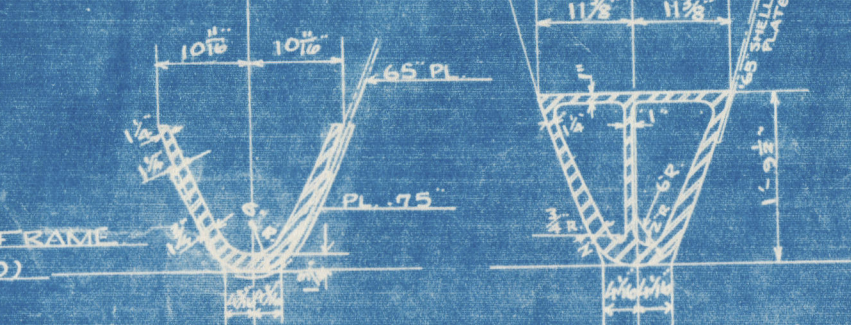
FACE OF STOPPER
ROUGH PLANE



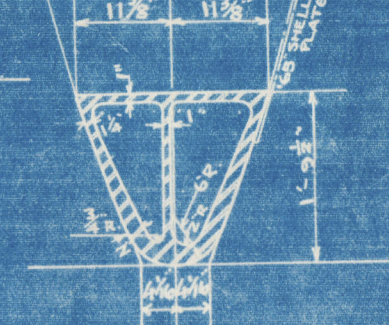
STERN FRAME



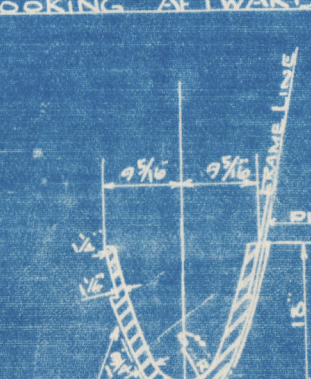
AFT END OF STERN CUT-UP
LOOKING FORWARD



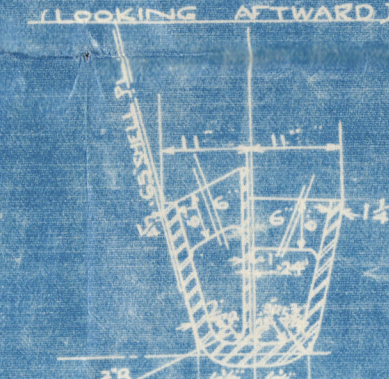
F.NO. 10
LOOKING AFTWARD



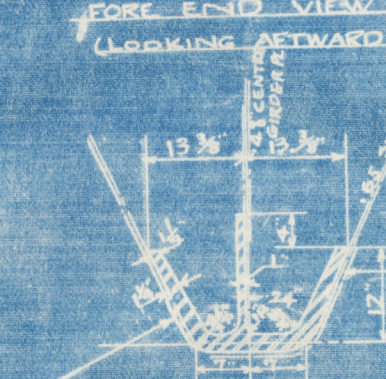
PORT END OF STERN FRAME
LOOKING AFTWARD



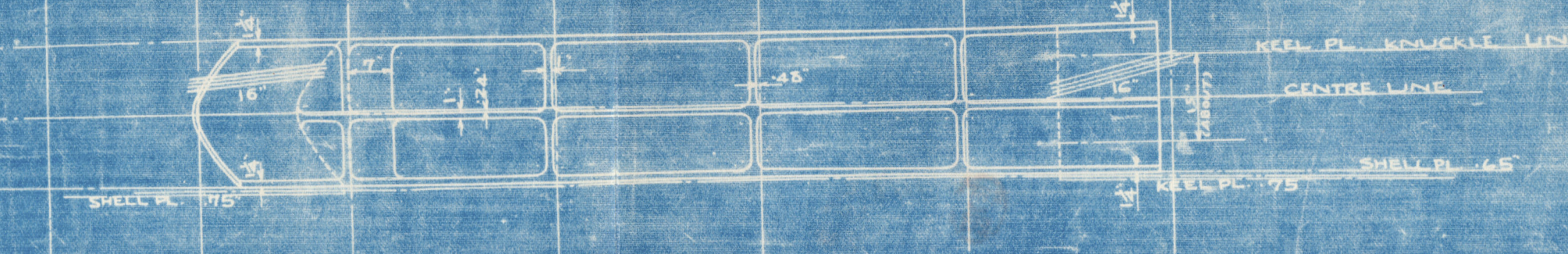
F.NO. 12
LOOKING AFTWARD



PORT END VIEW
LOOKING AFTWARD



STERN CUT-UP



M.V. "HOKKAI MARU".

Nagasaki Report No. 1878.

M.S. "HOKKAI MARU"
STERN CASTINGS

SCALE 1/2 TO 1 FT.
(FINISHED PLAN)

M.V. "HOKKAI MARU".

Nagasaki Report No.1878.

M.S. "HOKKAI MARU" STERN CASTINGS

SCALE $\frac{1}{2}$ " TO 1 FT.
(FINISHED PLAN)

S. Komiga
M. Ogawa
H. Kawada
June 8, 1931



© 2020

Lloyd's Register
Foundation

007486-007495-0054

007486-007495-0054