

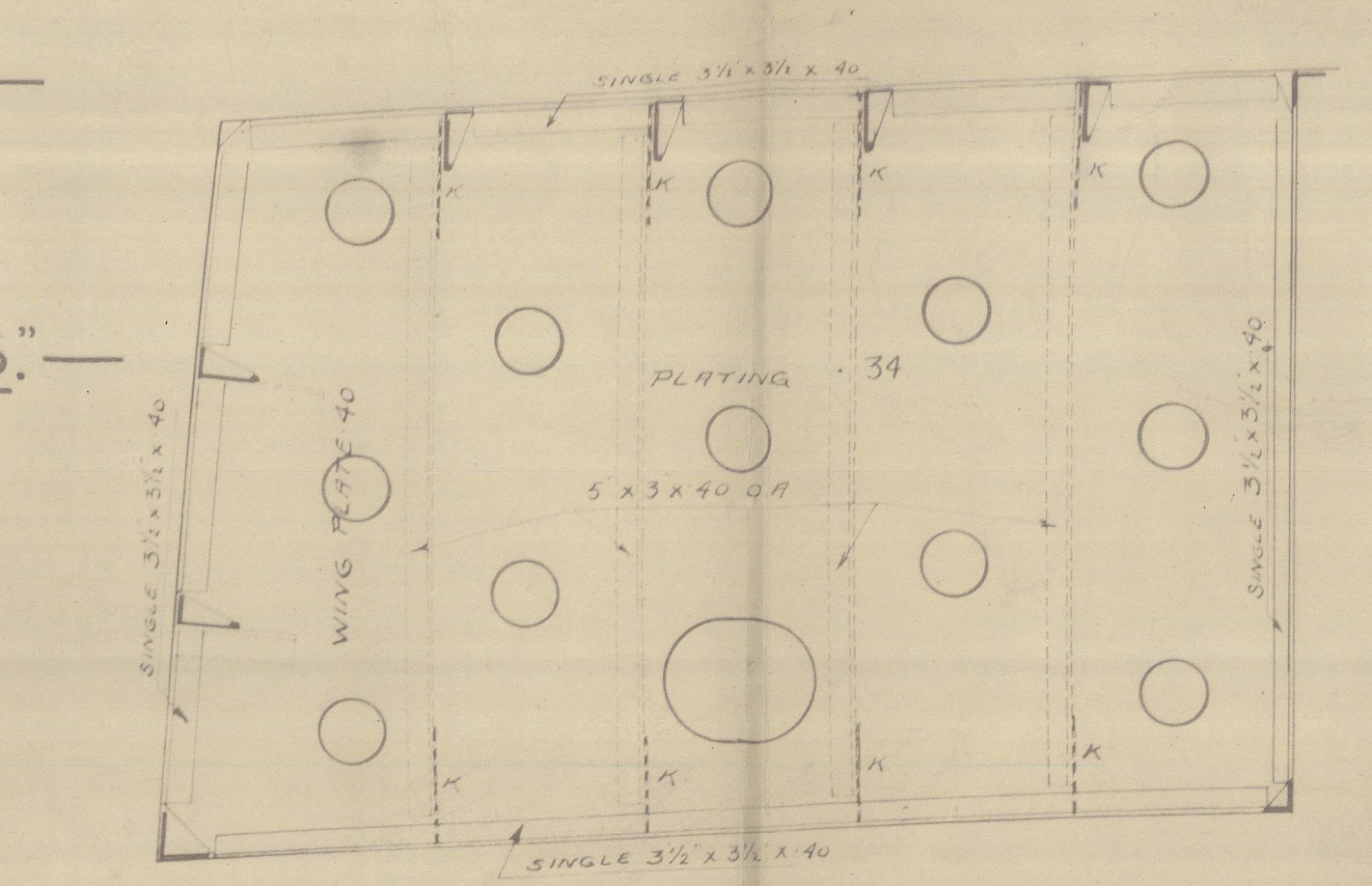
LLOYD'S NUMERALS  
 BREADTH M.P. 54.0  
 DEPTH M.P. 36.5  
 50.5 TONS N°  
 LENGTH B.P. 440.  
 39820 LONG N°  
 D to L (UPPER DECK) = 12.05

**RIVETING**  
 SHEERSTRONG BUTTS DOUBLE STRIPS TRIPLE RIVETS FOR 1/4 L TO TREAT AT ENDS  
 STAINING BELOW BUTTS QUAD OVERLAPS FOR 1/4 L TO TREAT AT ENDS  
 SHELL SIDE BUTTS TRIPLE OVERLAPS FOR 1/4 L  
 BOTTOM BUTTS QUAD OVERLAPS TO TREAT OVERLAPS AT ENDS  
 KEEL DOUBLE STRIPS TRIPLE RIVETS FOR 1/4 L TO TREAT AT ENDS  
 UPPER DA STRONGER BUTTS QUAD RIVETS OVERLAPS FOR 1/4 L TO TREAT AT ENDS  
 2" DA STRONGER BUTTS TRIPLE OVERLAPS FOR 1/4 L  
 2" DECK BUTTS DOUBLE OVERLAPS IN WAY OF OIL  
 TRUNK SIDE BUTTS DOUBLE OVERLAPS FOR 1/4 L  
 VERICAL REEL PLATE BUTTS TRIPLE OVERLAPS FOR 1/4 L  
 SERIES OF ALL PLATING IN WAY OF OIL DOUBLE OVERLAPS (EXCEPT SHEER PLATE)  
 LONGITUDINAL RIVETING IN DECK 6 DIPS APART  
 LONGITUDINAL RIVETING IN 2" DECK 5 DIPS APART

NOTES: LONGITUDINALS TO SHELL MIDDLE LINE BULKHEAD  
 BELOW TRUNK DECK BASED ON 7 SPIN OF 5-1 IN VIEW OF BRACKET  
 LONGITUDINALS TO TRUNK DECK UPPER DECK IN TRUNK MIDDLE LINE  
 BULKHEAD IN TRUNK TRUNK TIES BASED ON 7 SPIN OF 5-1  
 IN VIEW OF BRACKET  
 LONGITUDINALS IN TRUNK DA WING TRUNK BASED ON 7 SPIN OF 5-1

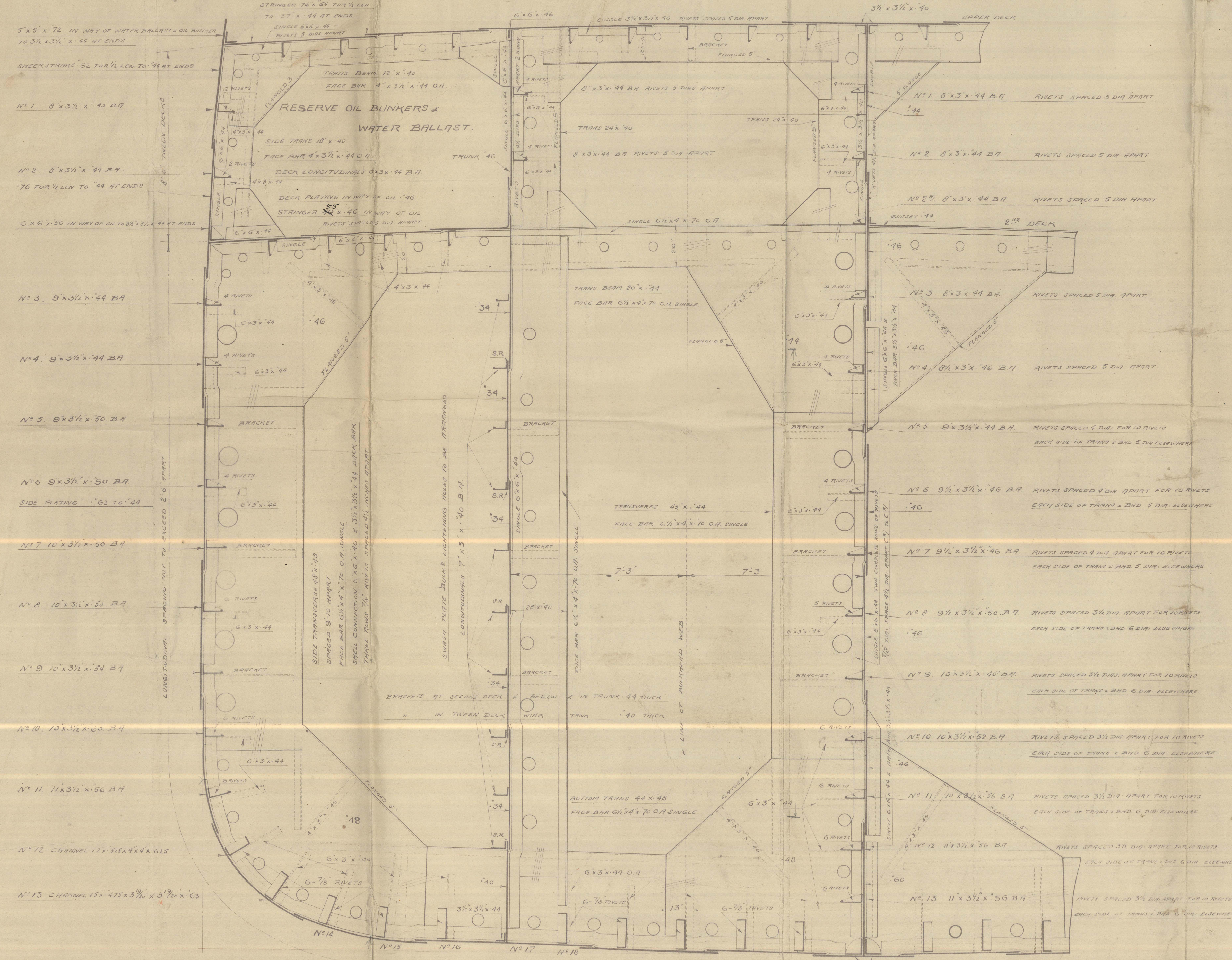
**M. V. "SANTA MARGHERITA."**  
**MIDSHIP SECTION.**  
 LENGTH B.P. 440'0", BREADTH M.P. 54'0", DEPTH M.P. 36'6".  
 SCALE 1/2 INCH = ONE FOOT.  
 ISHERWOOD SYSTEM (PATENT)

NOTE: ALL RIVETS IN OIL TANKS NOT TO BE LESS THAN 7/8 DIA EXCEPT  
 THIRD TANK DECK LONGITUDINALS 3/4 DIA

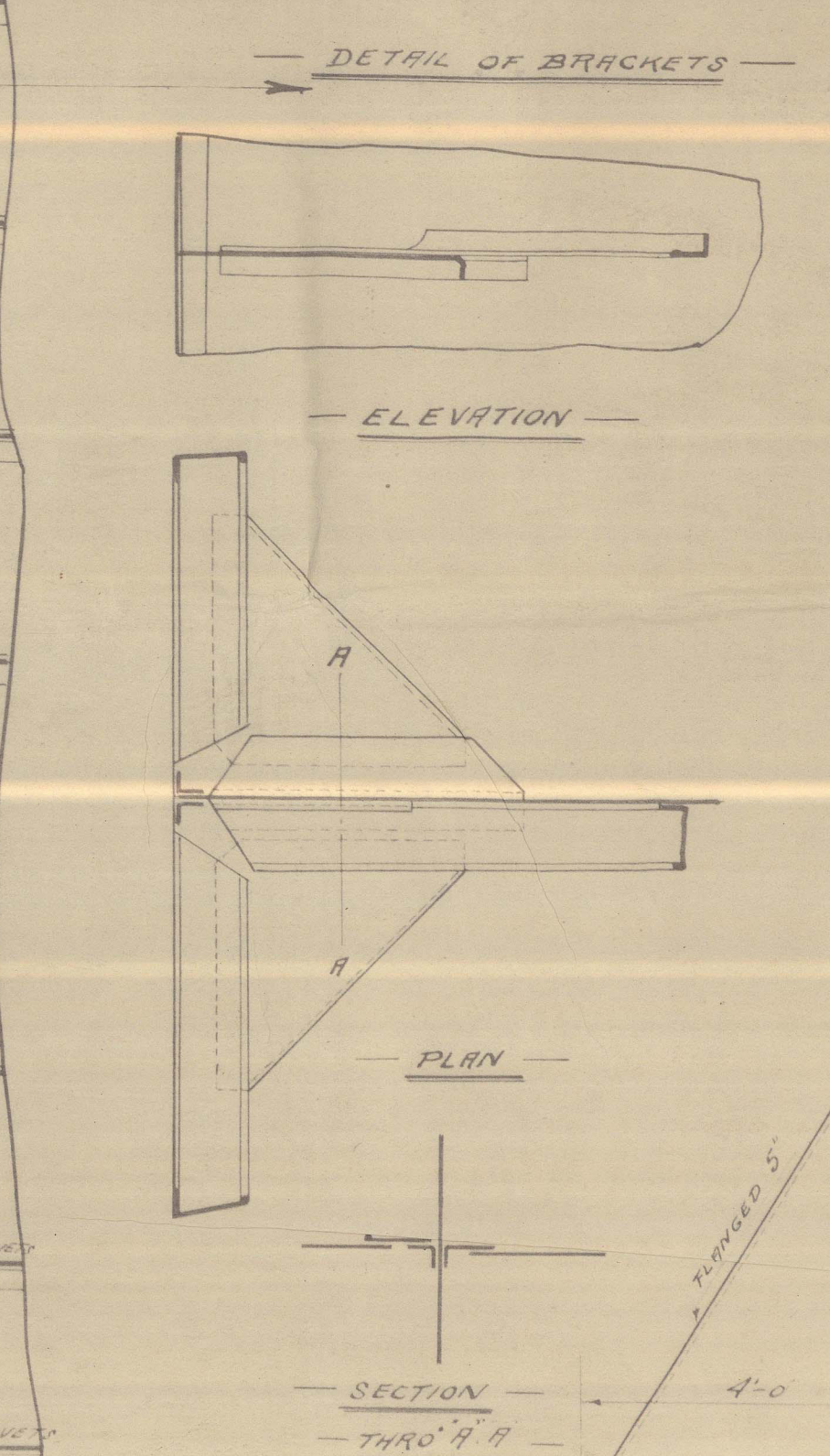
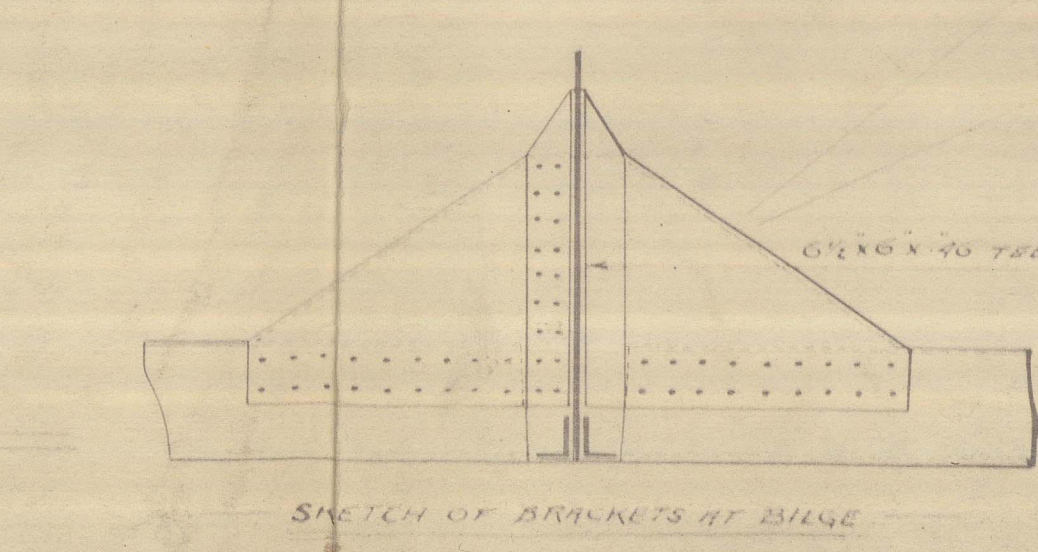
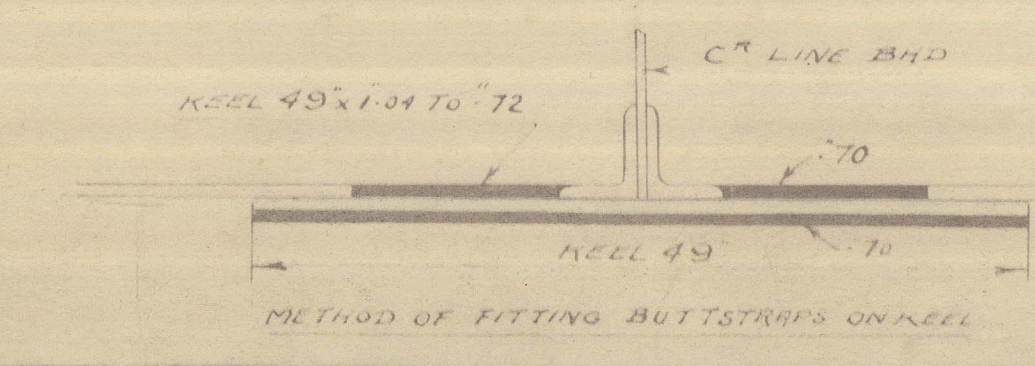


FORGINGS (FORGED STEEL)  
 STEM BAR 10 1/2 x 2 1/2  
 STERN POST 9 x 3 1/2  
 RUDDER POST 11 DIAMETER  
 STOCK 11 DIA

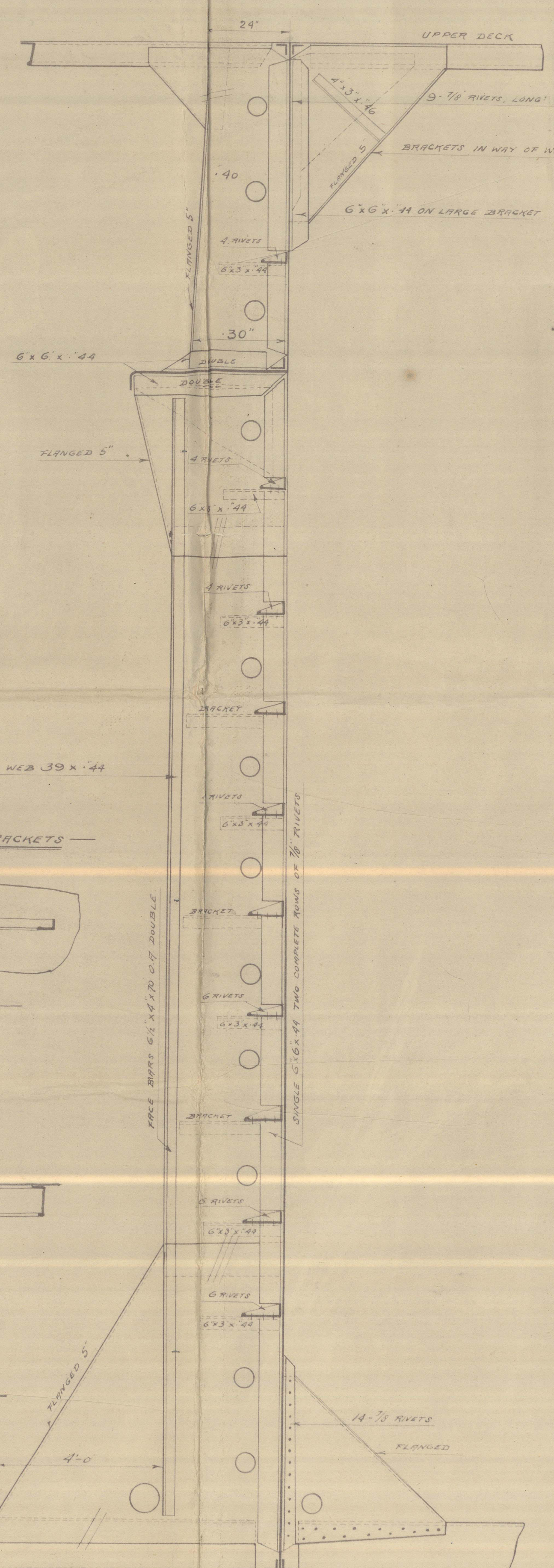
70' RIVETING  
 RIVETS SPACED 6 DIA APART  
 RIVETS SPACED 6 DIA  
 RIVETS SPACED 5 DIA APART  
 RIVETS SPACED 5 DIA APART  
 RIVETS SPACED 5 DIA APART FOR 10 RIVETS  
 EACH SIDE OF TRUNK AND 5 DIA ELSEWHERE  
 RIVETS SPACED 5 DIA APART FOR 10 RIVETS  
 EACH SIDE OF TRUNK AND 5 DIA ELSEWHERE  
 RIVETS SPACED 5 DIA APART FOR 10 RIVETS  
 EACH SIDE OF TRUNK AND 5 DIA ELSEWHERE  
 RIVETS SPACED 5 DIA APART FOR 10 RIVETS  
 EACH SIDE OF TRUNK AND 5 DIA ELSEWHERE  
 RIVETS SPACED 5 DIA APART FOR 10 RIVETS  
 EACH SIDE OF TRUNK AND 5 DIA ELSEWHERE  
 RIVETS SPACED 5 DIA APART FOR 10 RIVETS  
 EACH SIDE OF TRUNK AND 5 DIA ELSEWHERE  
 RIVETS SPACED 5 DIA APART FOR 10 RIVETS  
 EACH SIDE OF TRUNK AND 5 DIA ELSEWHERE



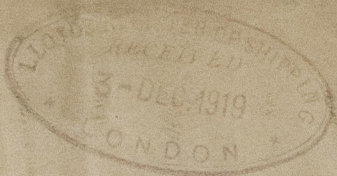
LIGHTENING HOLES TO BE NOT LESS THAN 8" CLEAR OF NOTCHES FOR  
 LONGITUDINALS TO MAINTAIN THE SAME POSITION RELATIVE TO SHELL AS  
 SHOWN ON MIDSHIP SECTION  
 BOTTOM LONG CHANNEL 15 x 225 x 4 x 1/2  
 BOTTOM PLATING 1/4 TO 1/2 NOT FURTHER REDUCED  
 MIDSHIP THICKNESS MAINTAINED TO COLLISION AND OUTLET OF BOTTOM  
 DISCHARGING AT 25"



C.T. 11-19







Stoy  
"Trigonía"  
ex  
Midship Section  
M.V. "Marinula" ex  
Sanza Margherita

M. Midship Section Marinula

Barrow, Entry Report No. 1854



© 2021

Lloyd's Register  
Foundation

007432-007438-0002